

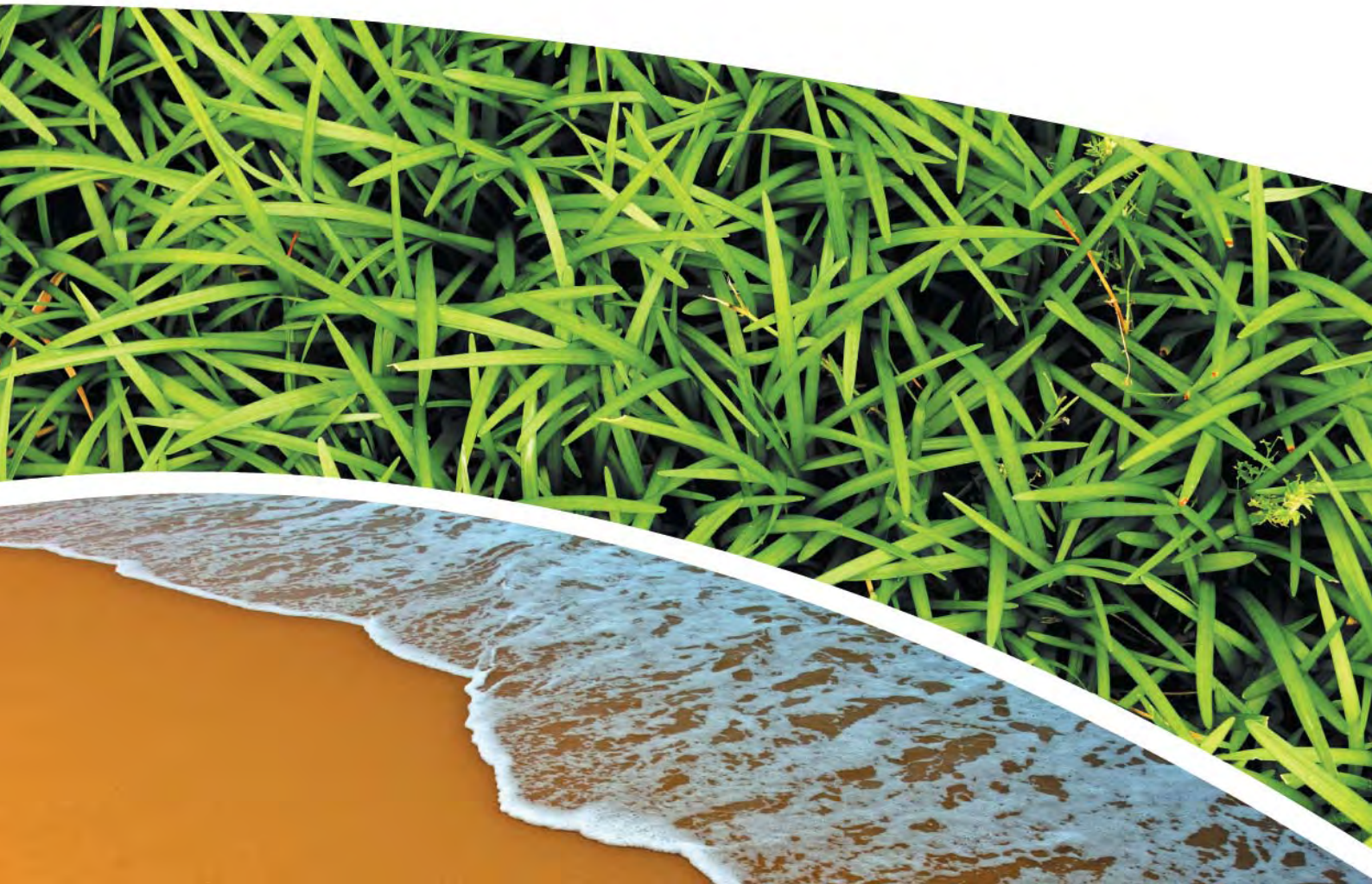
**SURFACE WATER, DEPOSITIONAL DUST,
HVAS AND METEOROLOGICAL MONITORING**

Prepared for Pine Dale Mine Community Consultative Committee

Prepared by RCA Australia

RCA ref 6880-1749/0

August 2017



RCA AUSTRALIA

ABN 53 063 515 711

92 Hill Street, CARRINGTON NSW 2294


Telephone: +61 2 4902 9200

Facsimile: +61 2 4902 9299

Email: administrator@rca.com.au

Internet: www.rca.com.au

This document is and shall remain the property of RCA Australia. The document may only be used for the purpose for which it was commissioned and in accordance with the Terms of Engagement for the commission supplied at the time of proposal. Unauthorised use of this document in any form whatsoever is prohibited.

DOCUMENT STATUS						
Rev No	Comment	Author	Reviewer	Approved for Issue (Project Manager)		
				Name	Signature	Date
/0	Final	C Rocher	K Tripp	K Tripp		18.09.2017

DOCUMENT DISTRIBUTION				
Rev No	Copies	Format	Issued to	Date
/0	1	Electronic (email)	Pine Dale Mine – Graham Goodwin graham.goodwin@energyaustralia.com.au	18.09.2017
/0	1	Electronic (email)	Energy Australia- Mark Frewin mark.frewin@energyaustralia.com.au	18.09.2017
/0	1	Electronic (email)	Lithgow City Council – Andrew Muir andrew.muir@lithgow.nsw.gov.au	18.09.2017
/0	1	Electronic report	RCA – job archive	18.09.2017



RCA LE ref 6880-1749/0



19 August 2017

Pine Dale Mine
PO Box 202
WALLERAWANG NSW 2845

Attention Mr Graham Goodwin

**REPORT COMPILED FOR
PINE DALE MINE COMMUNITY CONSULTATIVE COMMITTEE
DETAILING SURFACE WATER, GROUNDWATER DEPOSITIONAL DUST,
HVAS AND METEOROLOGICAL MONITORING
AUGUST 2017**

1 GENERAL COMMENTS

Job Number: 6880.

Date Samples Received: During the month of August 2017.

Samples received were sampled by RCA Laboratories – Environmental staff.

This report satisfies the requirements to monitor environmental parameters as presented in the Pine Dale Mine Environmental Protection Licence (EPL 4911).

2 ANALYTICAL PROCEDURES

The analytical procedures used by RCA Laboratories – Environmental (NATA Accreditation number 9811) are based on established internationally recognised procedures such as APHA and Australian Standards. Analytical test methods are detailed in **Table 1**. ALS Environmental has been used to obtain analysis of anions, cations and dissolved metals (NATA Accreditation number 825).

Table 1 Analytical Test Methods

ANALYSIS	METHOD	UNITS	ANALYSING LABORATORY	NATA / NON-NATA
Determination of Suspended Particulate Matter	ENV-LAB003	µg/m ³	RCA Laboratories – Environmental	NATA Analysis
Determination of Particulate Matter – Deposited Matter	ENV-LAB004	g/m ² .month	RCA Laboratories – Environmental	NATA Analysis
pH	ENV-LAB006	pH	RCA Laboratories – Environmental	NATA Analysis
Conductivity	ENV-LAB010	µS/cm	RCA Laboratories – Environmental	NATA Analysis
Total Suspended Solids	ENV-LAB009	mg/L	RCA Laboratories – Environmental	NATA Analysis
Turbidity	ENV-LAB037	NTU	RCA Laboratories - Environmental	NATA Analysis
Oil and Grease	ENV-LAB022	mg/L	RCA Laboratories - Environmental	Non-NATA Analysis
Major Anions (Alkalinity, Cl, SO ₄)	ED037, ED041, ED045	mg/L	ALS	NATA Analysis
Major Cations (Ca, Mg, Na, K)	ED093	mg/L	ALS	NATA Analysis
Dissolved Metals	EG020F	mg/L	ALS	NATA Analysis

3 WATER MONITORING RESULTS

3.1 GROUNDWATER

A total of 2 on-site groundwater samples were collected during the month of August 2017. Water quality analysis results are shown in **Table 2**.

Table 2 Groundwater Analysis Results – Monthly Monitoring

ANALYSIS	UNITS	P6	P7
Sample Number	-	08176880011	08176880012
Date Sampled	-	10/08/17	10/08/17
Time Sampled	-	16:08	16:50
Depth to Water from Surface	m	24.57	6.90
Water Level (AHD)	m	892.38	887.50
Temperature	°C	13.6	14.2
pH	pH	6.20	6.22
Conductivity	µS/cm	1450	823
Turbidity	NTU	45	
Dissolved Oxygen	mg/L	5.6	
TSS	mg/L	39	
Oil and Grease	mg/L	<5	
Bicarbonate Alkalinity (CaCO ₃)	mg/L	84	
Total Alkalinity (CaCO ₃)	mg/L	84	
Sulfate (as SO ₄)	mg/L	672	
Chloride	mg/L	33	
Calcium	mg/L	123	
Magnesium	mg/L	55	
Sodium	mg/L	48	
Potassium	mg/L	18	
Cobalt (dissolved)	mg/L	0.072	
Manganese (dissolved)	mg/L	2.5	
Nickel (dissolved)	mg/L	0.109	
Zinc (dissolved)	mg/L	0.039	
Iron (dissolved)	mg/L	30.7	
Trigger Levels			
pH trigger level	pH	6.2 – 8.0	6.3 – 8.0
Conductivity trigger level	µS/cm	1180	852
Water Level (AHD) #	m	887.90	883.28

NOTES: *Depth relative to ground level (not standpipe height).

■ Indicates analysis was not required

Results shown in **italics** indicates exceedance of trigger level

Groundwater monitoring locations are shown in **Appendix 1**.

3.2 EPA SURFACE WATER MONITORING

Routine quarterly surface water monitoring was undertaken during August 2017 at three surface water sites, EPA Points 2, 3 and 14. Water quality analysis results are shown in **Table 3**.

Table 3 EPA Surface Water Analysis Results

ANALYSIS	UNITS	EPA Point 2 Neubecks Ck Upstream	EPA Point 3 Neubecks Ck Downstream	EPA Point 14 Coxs River Downstream
Sample Number	-	08176880009	08176880004	08176880010
Date Sampled	-	10/08/17	10/08/17	10/08/17
Time Sampled	-	15:30	13:43	10:22
Temperature	°C	6.5	10.8	16.0
pH	pH	7.10	7.14	8.51
Conductivity	µS/cm	795	1180	1330
Sulfate	NTU	204	420	86
Dissolved Iron	mg/L	0.05	0.99	<0.05
Total Suspended Solids	mg/L	<5	7	7
Turbidity	mg/L	4	8	18
Trigger Levels**				
pH	pH	7.1 – 8.0	6.4 – 8.0	7.5 – 8.0
Conductivity	µS/cm	2055	2223	1166
Total Suspended Solids	mg/L	30	30	30

Results shown in ***italics*** indicates exceedance of trigger level

** In a review of the Pine Dale Coal Mine water trigger levels (approved by the NSW Department of Primary Industries and Environmental Protection Authority) trigger levels for pH, conductivity and total suspended solids have been developed for EPL Point 2, 3 & 14. However, these triggers are not stipulated as part of EPL 4911.

4 AIR QUALITY MONITORING RESULTS

4.1 HIGH VOLUME AIR SAMPLERS (HVAS)

HVAS at this facility conform to AS/NZS 3580.9.3:2015, AS/NZS 3580.9.6:2015 and AS/NZS 3580.1.1:2016.

HVAS Total Suspended Particulate analysis results are shown in **Table 4**. PM₁₀ Suspended Particulate Matter results are shown in **Table 5**.

Table 4 Total Suspended Particulates (µg/m³ 0°C 101.3 kPa)

RUN DATE	TSP (µg/m ³)	SAMPLE NUMBER	FILTER NUMBER	DATE FILTER OFF	TIME FILTER OFF	FIELD TECH	HOURS RUN
04-Aug-17	7	08176880031	9326341	05-Aug-17	11:00	Client	24.00
10-Aug-17	12	08176880033	9326373	13-Aug-17	13:40	Client	24.00
16-Aug-17	22	08176880035	9326382	21-Aug-17	7:50	Client	24.00
22-Aug-17	17	08176880037	9326389	25-Aug-17	10:40	Client	24.00
28-Aug-17	10	08176880039	9326395	02-Sep-17	7:45	Client	24.00

Table 5 Suspended Particulate Matter PM_{10} ($\mu\text{g}/\text{m}^3$ 0°C 101.3 kPa)

RUN DATE	PM_{10} ($\mu\text{g}/\text{m}^3$)	SAMPLE NUMBER	FILTER NUMBER	DATE FILTER OFF	TIME FILTER OFF	FIELD TECH	HOURS RUN
04-Aug-17	<1	08176880032	9326342	05-Aug-17	11:05	Client	24.00
10-Aug-17	4	08176880034	9326374	13-Aug-17	13:44	Client	24.00
16-Aug-17	7	08176880036	9326381	21-Aug-17	7:55	Client	24.00
22-Aug-17	4	08176880038	9326390	25-Aug-17	10:45	Client	23.99
28-Aug-17	1	08176880040	9410985	02-Sep-17	7:50	Client	24.00

4.1.1 TSP Summary

The NSW EPA Annual Mean TSP allowable limit is $90\mu\text{g}/\text{m}^3$. All TSP HVAS results recorded during this monitoring period are in compliance with consent conditions, as the *current rolling annual mean* (from September 2016 to August 2017) for the TSP unit is $20.2\mu\text{g}/\text{m}^3$, which is well below the allowable limit of $90\mu\text{g}/\text{m}^3$.

4.1.2 PM_{10} Summary

The NSW EPA 24h Maximum PM_{10} allowable limit is $50\mu\text{g}/\text{m}^3$. The EPA Annual Mean PM_{10} allowable limit is $25\mu\text{g}/\text{m}^3$. All PM_{10} HVAS results recorded during this monitoring period conform to consent conditions, as the *current rolling annual mean* for the PM_{10} unit is $9.6\mu\text{g}/\text{m}^3$, which is below the allowable limit of $25\mu\text{g}/\text{m}^3$. The 24 hour maximum allowable limit of $50\mu\text{g}/\text{m}^3$ was not exceeded during the month of August 2017.

4.1.3 Comments

HVAS monitoring locations are shown in **Appendix 1**.

Graphical HVAS results presentations are shown in **Appendix 2**.

4.2 DEPOSITIONAL DUST

Depositional Dust Gauges at this facility conform to AS/NZS 3580.10.1:2016 and AS/NZS 3580.1.1:2016. Depositional Dust monitoring results are shown in **Table 5**.

Table 4 *Depositional Dust Monitoring - Deposited Matter – August 2017*

SAMPLE NUMBER	DEPOSIT GAUGE	DATE SAMPLE STARTED	DATE SAMPLE COMPLETED	NUMBER OF DAYS	NOTES	INSOLUBLE SOLIDS (g/m ² .month)	ASH (g/m ² .month)	COMBUSTIBLE MATTER (g/m ² .month)
08176880021	D1	10/07/2017	10/08/2017	31	I	0.5	0.2	0.3
08176880022	D2	10/07/2017	10/08/2017	31	I	0.4	0.1	0.3
08176880023	D3	10/07/2017	10/08/2017	31	I	0.5	0.3	0.2
08176880024	D4	10/07/2017	10/08/2017	31	I	0.2	0.1	0.1
08176880025	D5	10/07/2017	10/08/2017	31	I	0.4	0.2	0.2
08176880026	D6	10/07/2017	10/08/2017	31	I	0.4	0.3	0.1

Glossary of Terms Used in Notes:

I Insects (eg, Ants, Spiders)

4.2.1 Allowable Depositional Dust Limits

The EPA Long Term (Annual Average) Dust Limit is 4g/m² per month. All Depositional Dust results during this monitoring period are in compliance with consent conditions. The Annual Average for Dust Gauges D1, D2, D3, D4, D5 and D6 are all less than or equal to 0.9g/m² per month, which is below the allowable Annual Average Long Term Limit of 4g/m² per month.

Depositional Dust monitoring locations are shown in **Appendix 1**. Graphical Depositional Dust results are shown in **Appendix 2**.

5 BLASTING RESULTS

No blasting was undertaken during this month as mining operations have ceased since the end of March 2014.

6 NOISE MONITORING RESULTS

Routine quarterly noise monitoring was undertaken in August 2017. All noise results were found to be compliant with Environmental Protection Licence EPL 4911.

Full details and results of this noise monitoring are detailed in RCA Australia report 6880-N142.0 Pine Dale Mine Operation Attended Noise – August 2017.

7 OPERATIONAL ACTIVITIES

All of the approved minable reserves at the Pine Dale Mine have now been exhausted. Operational mining and the last coal sales ceased as of the end of March 2014.

All former operators have been made redundant; however some statutory positions still remain. Pine Dale Mine has been placed in care and maintenance since April 2014.

8 SUMMARY

During the month of August 2017 environmental monitoring constituents were found to be generally in compliance with EPL 4911 with the exception of electrical conductivity in groundwater sample P6 and the pH at in groundwater sample P7.

Standing water levels within the site groundwater bores were compliant with their respective trigger levels. The pH at both bore P6 was compliant with the respective trigger level range. The electrical conductivity at bore P6 exceeded the respective trigger level. The electrical conductivity at bore P7 was compliant with the respective trigger level, whilst the pH at this groundwater site was below the stipulated trigger level range.

Rolling annual averages from both the TSP and PM₁₀ High Volume Air Samplers are currently well below the EPA Annual Mean TSP and PM₁₀ criterion of 90µg/m³ and 25µg/m³ respectively.

Currently there are no depositional dust gauge results which are greater than the EPA Long Term (annual average) criteria of 4g/m².month based upon a rolling average of the past 12 months.

Pine Dale Mine ceased operation in March 2014 and therefore no blasting occurred at the site.

This report must not be reproduced except in full. Results or figures from this report must not be used without acknowledgment.

Please contact the undersigned if you have any queries.

Yours sincerely



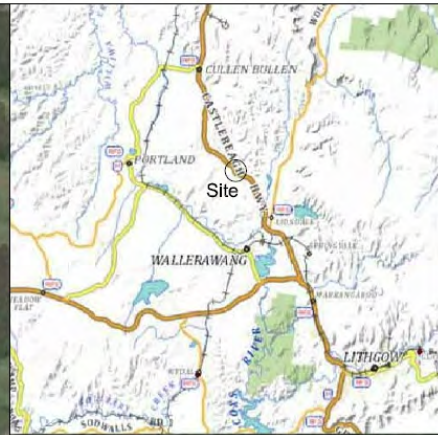
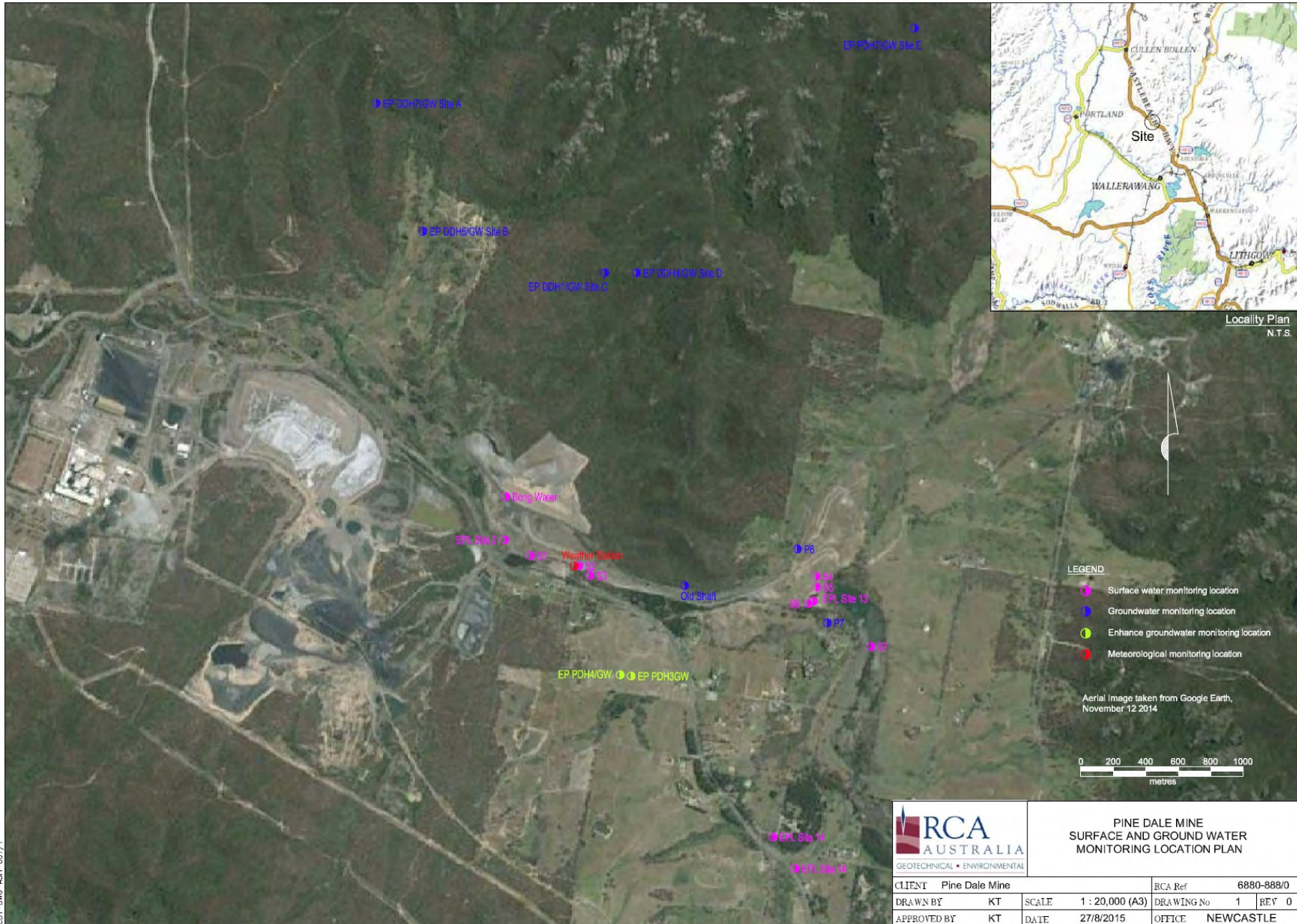
Carmen Rocher
Environmental Engineer
RCA Australia Pty Ltd



Karen Tripp
Senior Environmental Scientist/Hygienist
RCA Australia Pty Ltd

Appendix 1

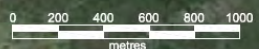
Surface Water Groundwater and Air Quality Monitoring Locations



Locality Plan
N.T.S.

- LEGEND**
- Surface water monitoring location
 - Groundwater monitoring location
 - Enhance groundwater monitoring location
 - Meteorological monitoring location

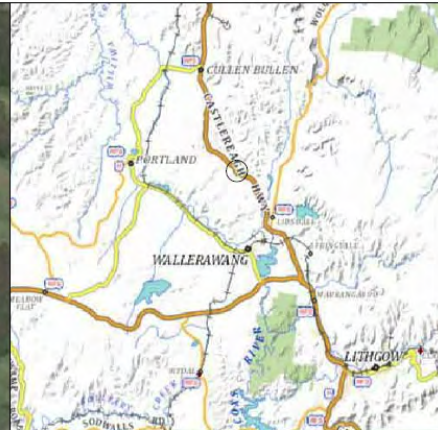
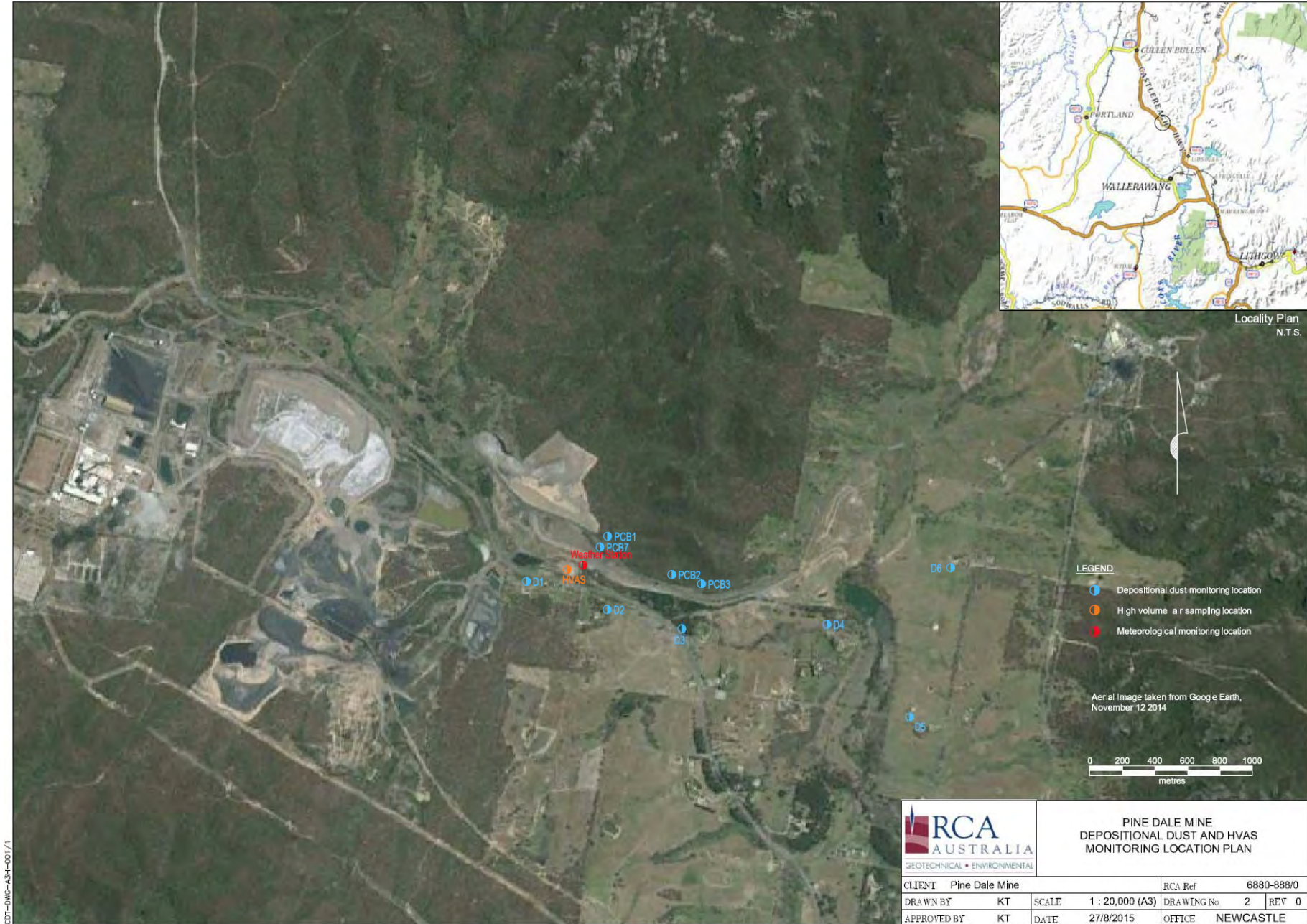
Aerial Image taken from Google Earth,
November 12 2014



**PINE DALE MINE
SURFACE AND GROUND WATER
MONITORING LOCATION PLAN**

CLIENT	Pine Dale Mine	RCA Ref	6880-888/0	
DRAWN BY	KT	SCALE	1 : 20,000 (A3)	DRAWING No 1 REV 0
APPROVED BY	KT	DATE	27/8/2015	OFFICE NEWCASTLE

G:\Projects\2015\150000\150000.dwg




Locality Plan
N.T.S.

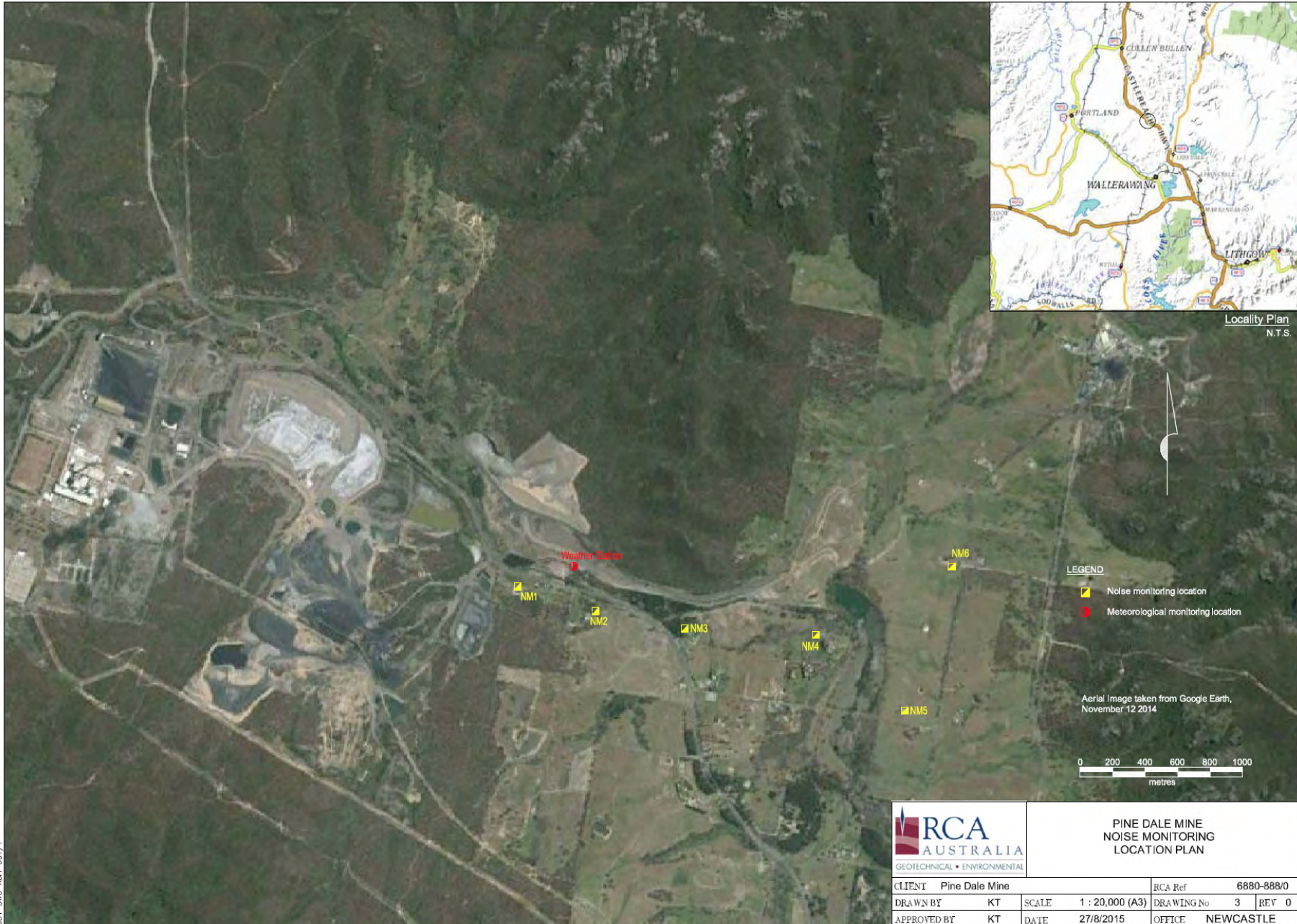
- LEGEND**
- Depositional dust monitoring location
 - High volume air sampling location
 - Meteorological monitoring location

Aerial Image taken from Google Earth,
November 12 2014





 GEOTECHNICAL • ENVIRONMENTAL		PINE DALE MINE DEPOSITIONAL DUST AND HVAS MONITORING LOCATION PLAN			
		CLIENT	Pine Dale Mine	RCA Ref	6880-888/0
DRAWN BY	KT	SCALE	1 : 20,000 (A3)	DRAWING No	2
APPROVED BY	KT	DATE	27/8/2015	OFFICE	NEWCASTLE
				REV	0

COT-DWC-ASH-001/1



Locality Plan
N.T.S.

- LEGEND**
-  Noise monitoring location
 -  Meteorological monitoring location

Aerial Image taken from Google Earth,
November 12 2014



**PINE DALE MINE
NOISE MONITORING
LOCATION PLAN**

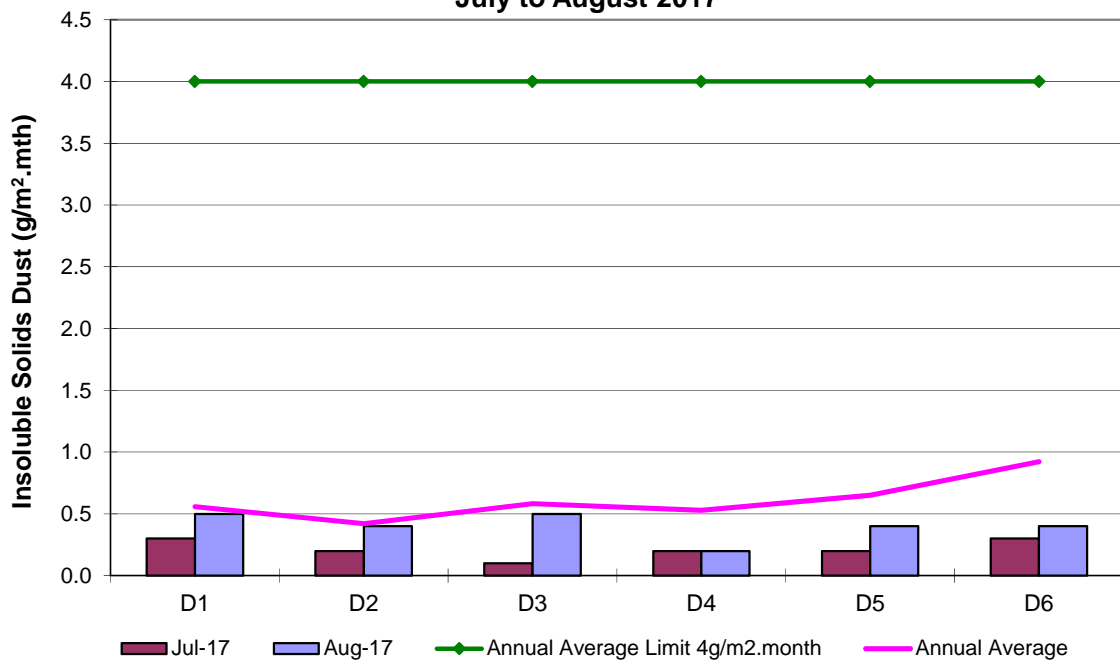
CLIENT	Pine Dale Mine			RCA Ref	6880-888/0
DRAWN BY	KT	SCALE	1 : 20,000 (A3)	DRAWING No	3 REV 0
APPROVED BY	KT	DATE	27/8/2015	OFFICE	NEWCASTLE

11/11/15 10:00 AM 11/11/15 10:00 AM

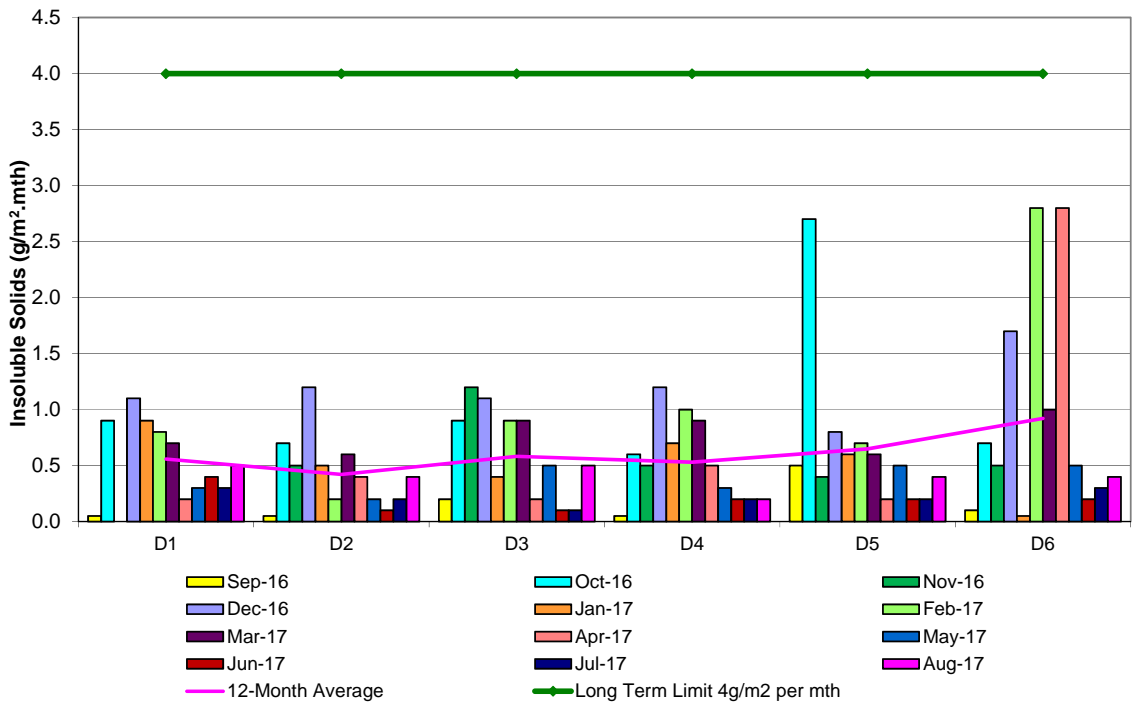
Appendix 2

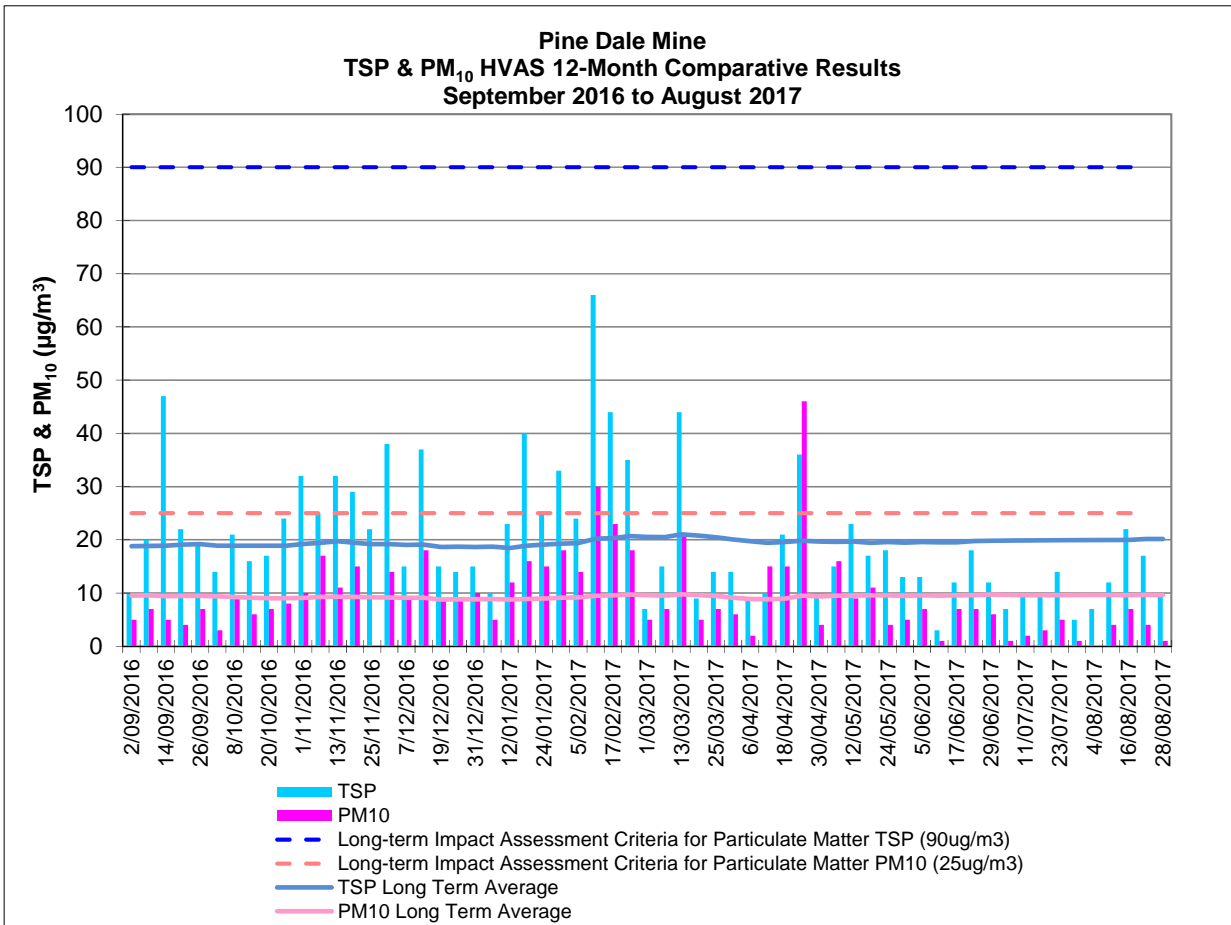
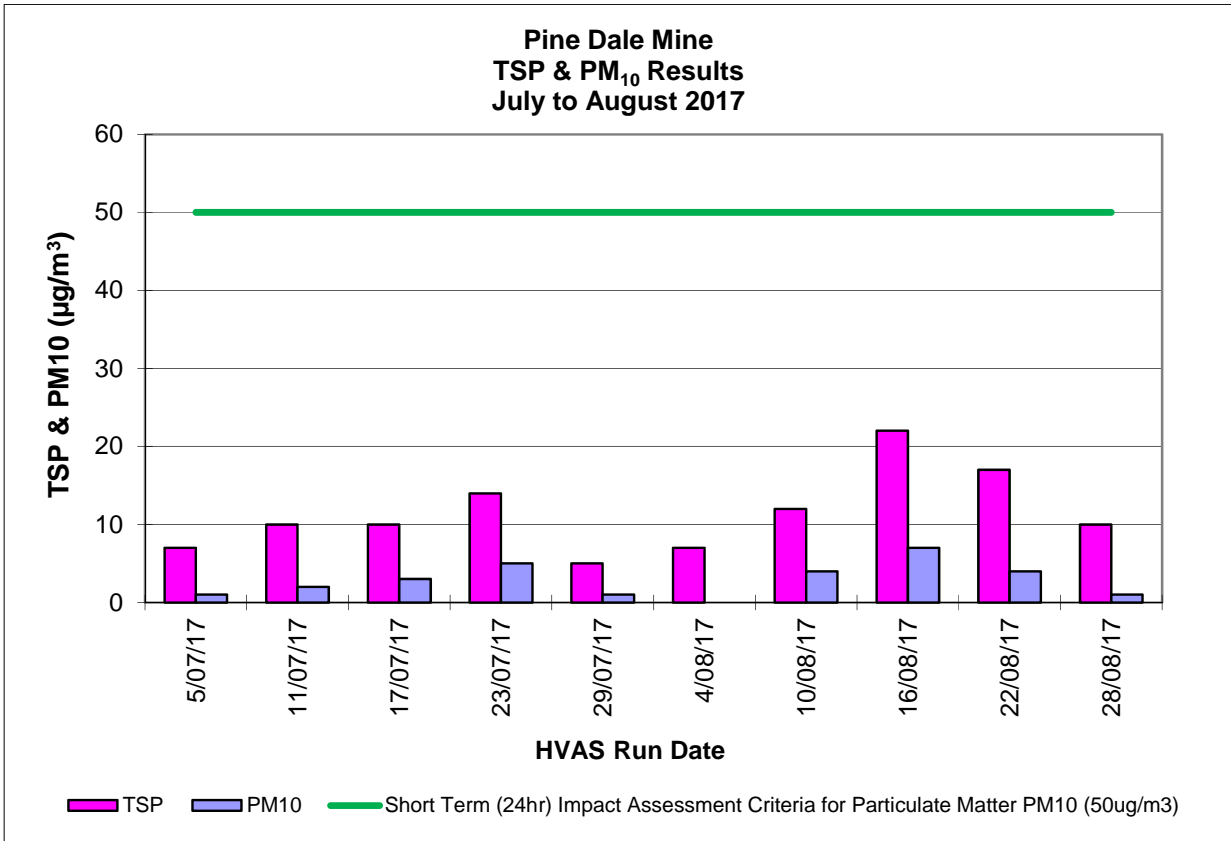
Depositional Dust and HVAS Graphs

**Pine Dale Mine
Depositional Dust Gauge Comparative Results
July to August 2017**



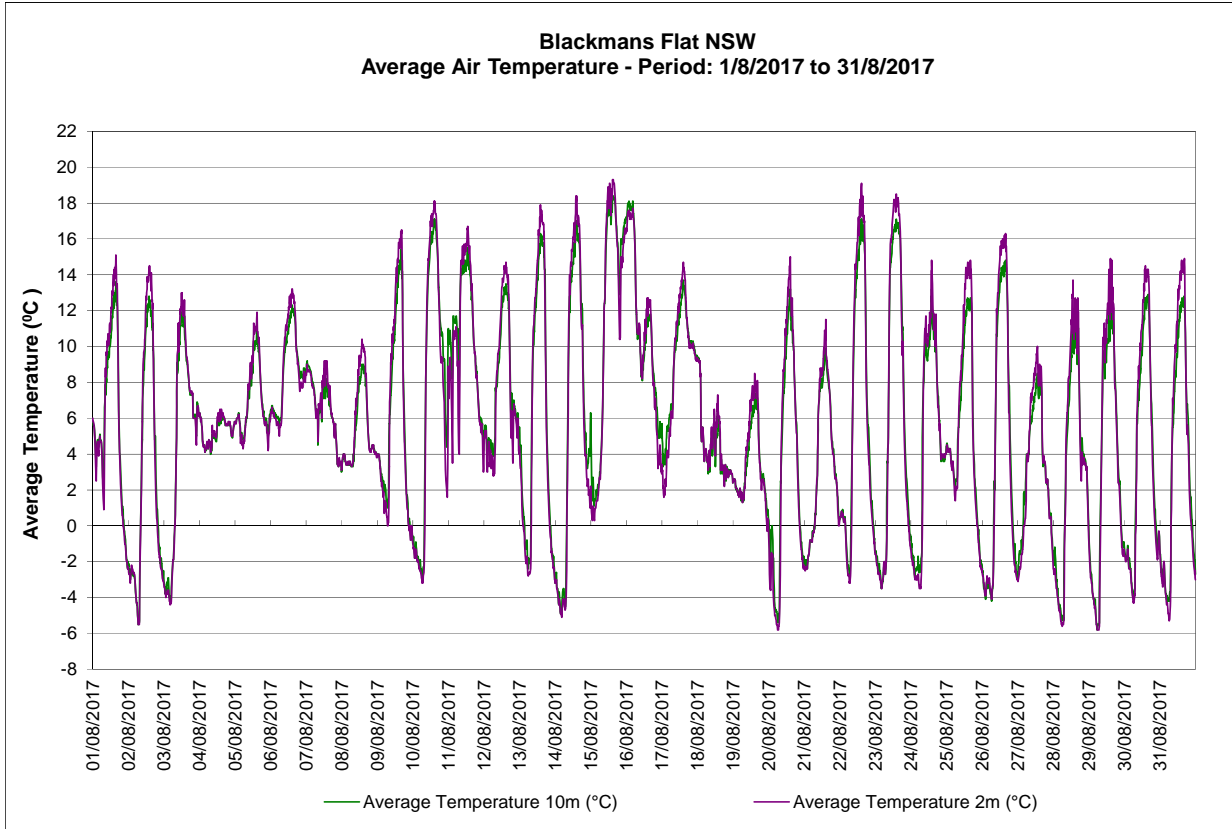
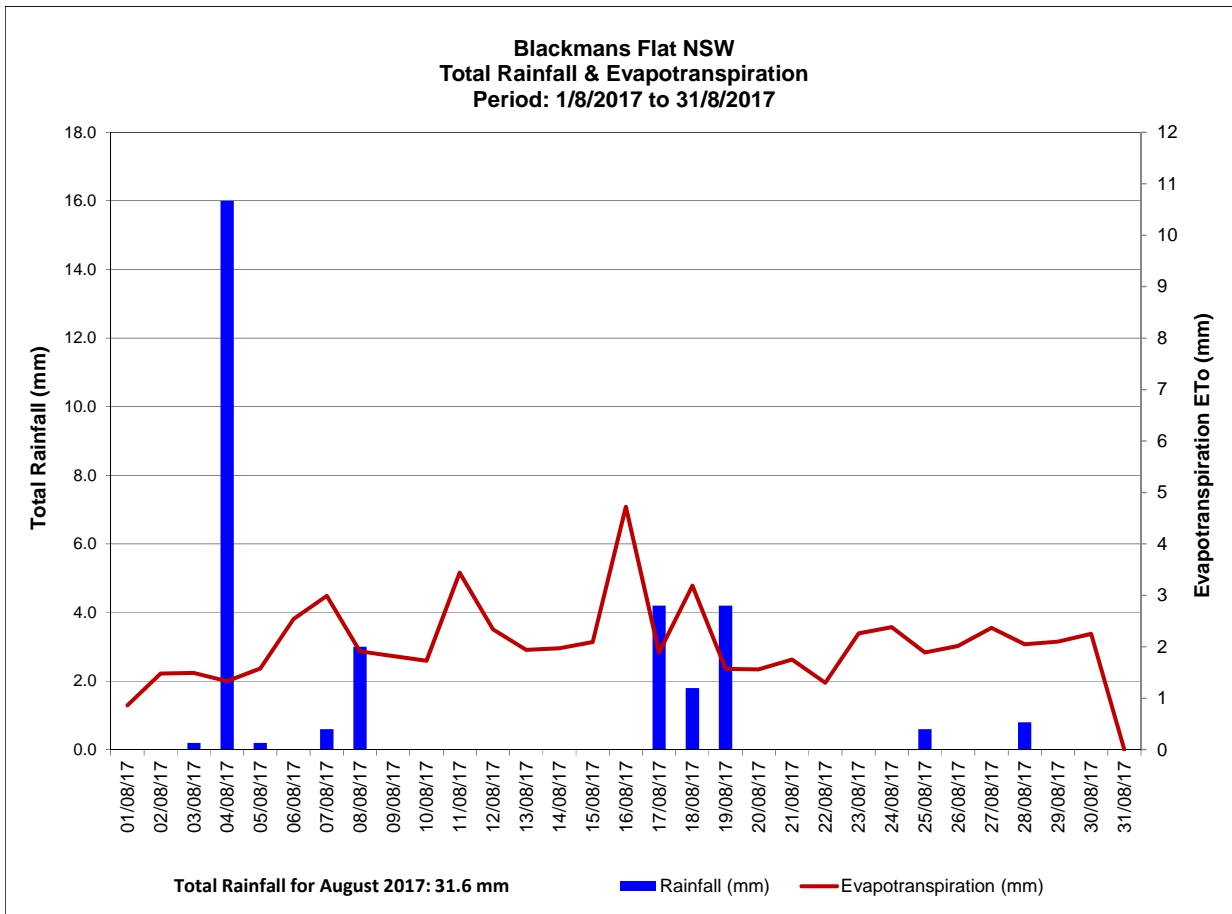
**Pine Dale Mine
Deposited Matter - Insoluble Solids 12 Months Comparative Results
September 2016 to August 2017**



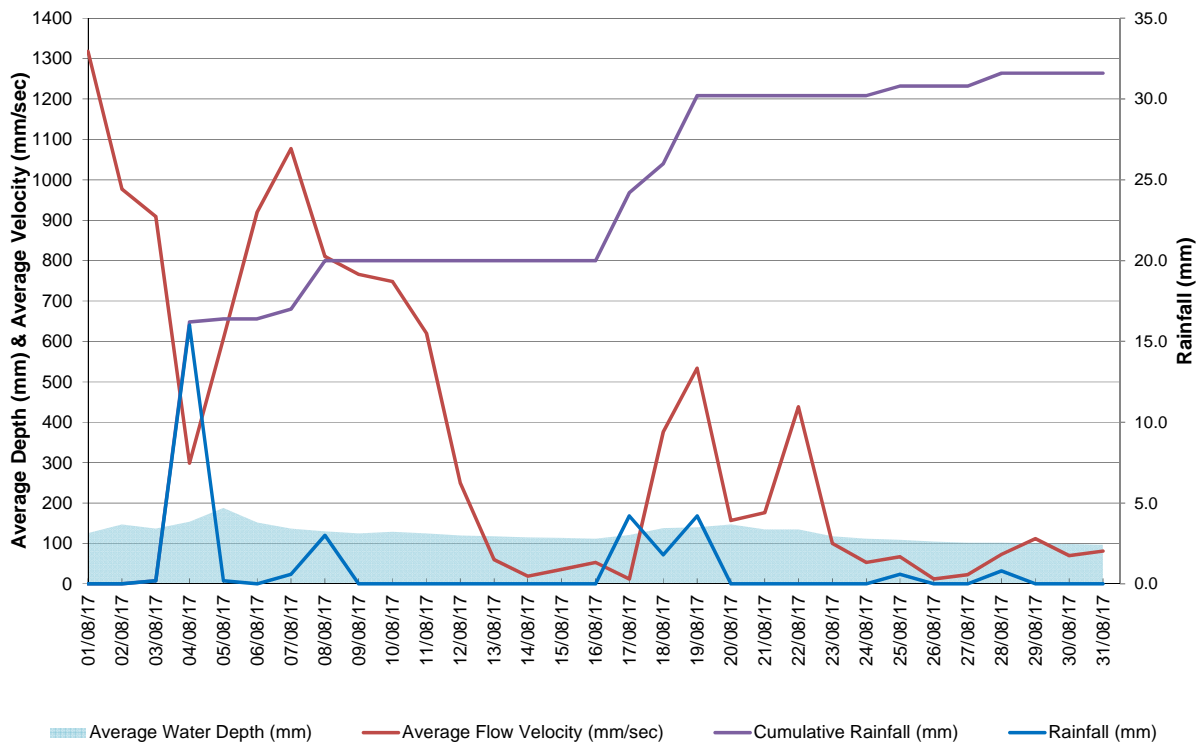


Appendix 3

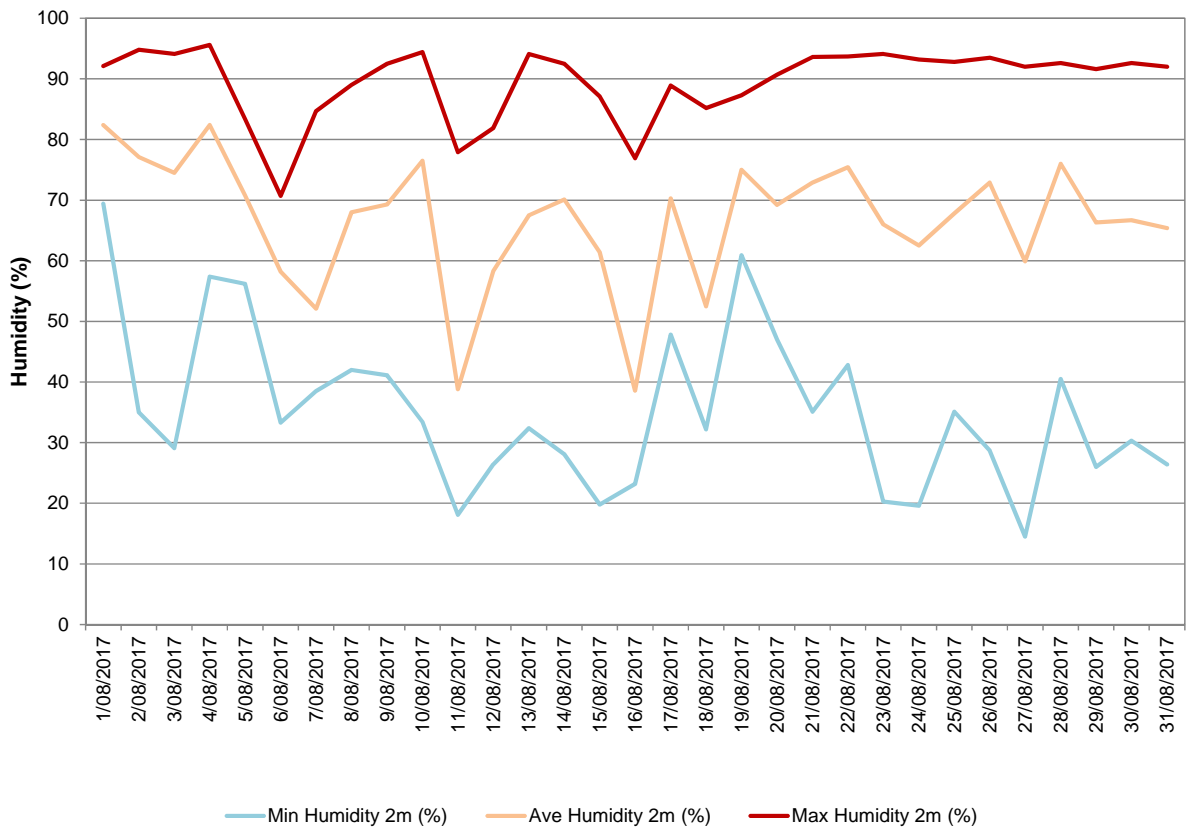
Meteorological Data

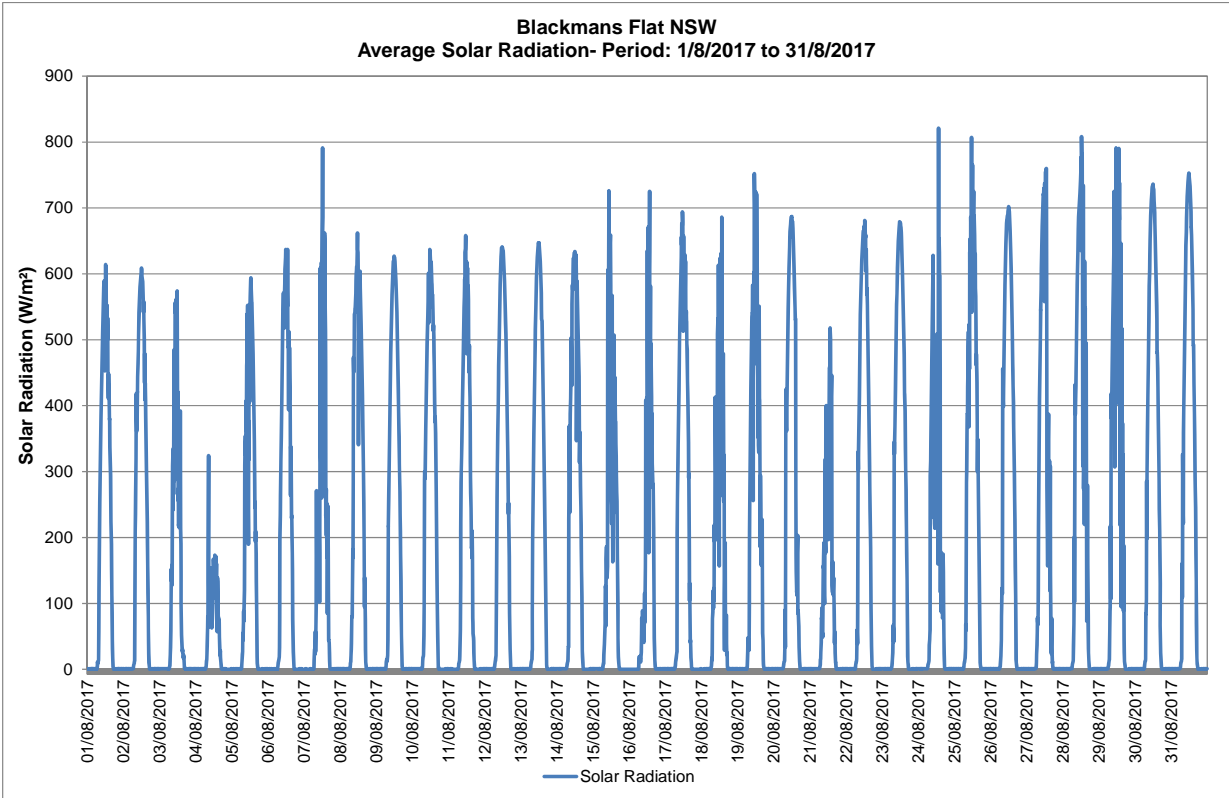
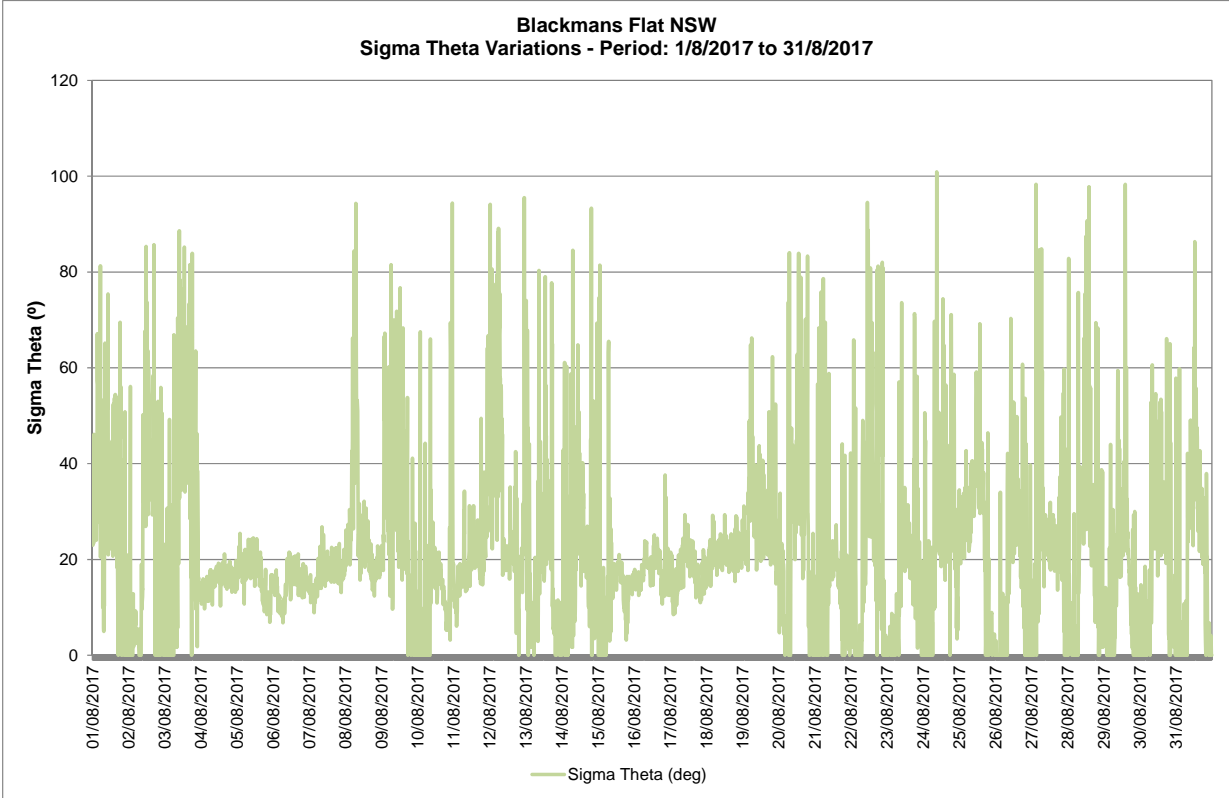


Neubecks Creek - Blackmans Flat NSW
Average Depth & Velocity vs. Rainfall- Period: 1/8/2017 to 31/8/2017



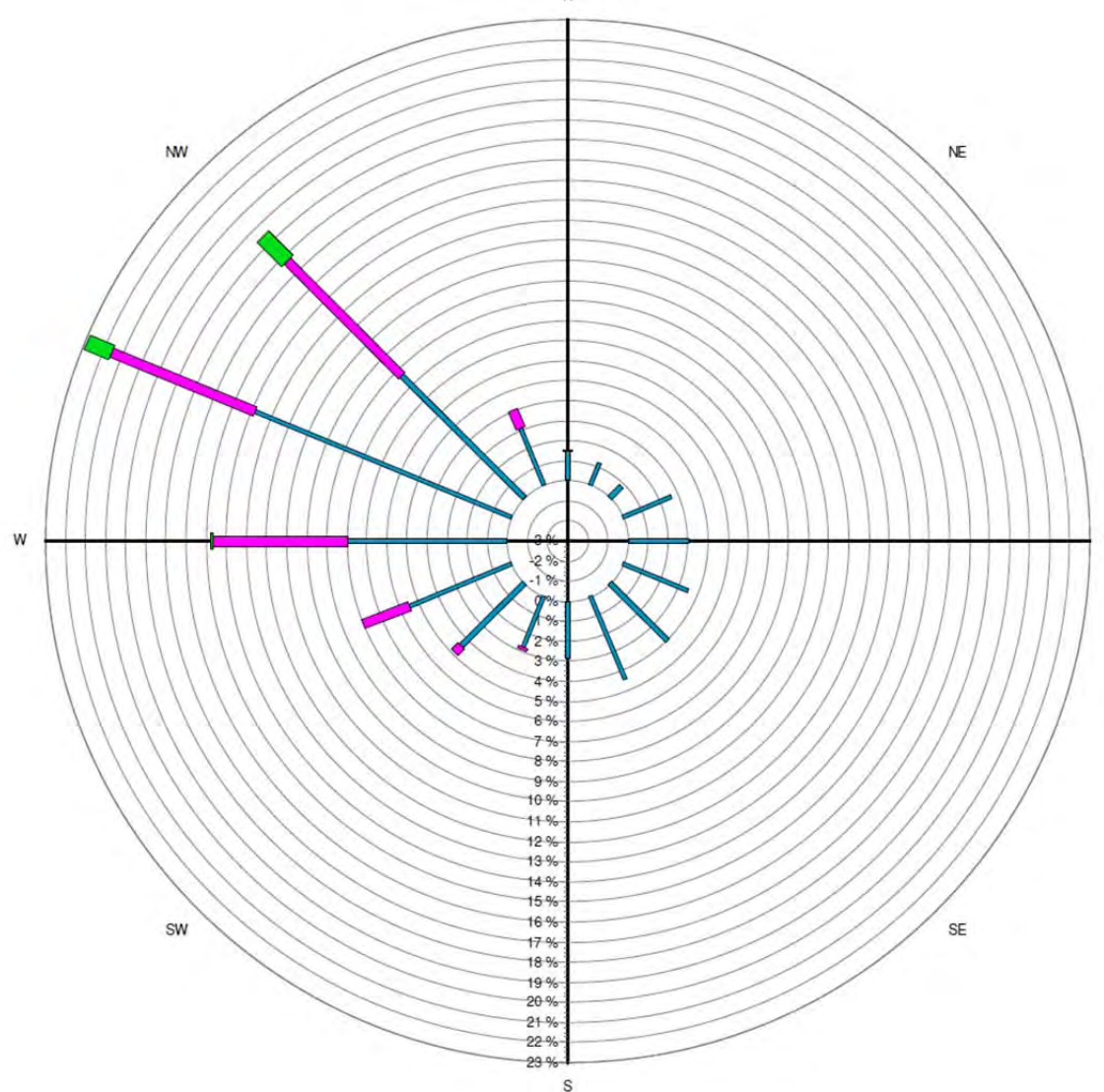
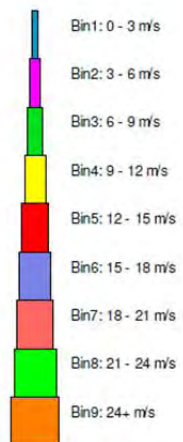
Blackmans Flat NSW
Daily Humidity Variations - Period: 1/8/2017 to 31/8/2017





Blackmans Flat Windrose

1/08/2017 to 31/08/2017



Source data:
Metford.SCM
10 minutely data - Ave WndDir (deg)
10 minutely data - Ave WindSpd (m/sec)