

Community Consultative Committee (CCC) Pine Dale Coal Mine – Yarraboldy Extension

**C/- Enhance Place Pty
Limited**

*PO Box 202
Wallerawang NSW 2845*

Phone: (02) 6355 1761

Minutes of the Meeting of Members of the Pine Dale Coal Mine-Yarraboldy Extension & EL7621

Community Consultative Committee (CCC),

Held at the Black Gold Conference Centre,

121 Main Street, Wallerawang NSW 2845

On Thursday 11th December, 2014 at 2.00pm

Present:	Mr Howard Fisher	(Chairman)
	Mr Peter Barnes	(Community representative)
	Clr Colin Hunter	(Lithgow City Council)
	Mr Robert Taylor	(Community representative)
	Mr Graham Goodwin	(Company representative)
	Mr Mark Frewin	(CCC Secretary – Company representative)
Guests:	Mr Ben Eastwood	(Environmental Advisor)
Apologies:	Ms Jessica Heath	(Lithgow City Council)
	Mrs Sharon Brown	(Community representative - Gundungurra Tribal Council)

1. Welcome and apologies

The Chairman declared the meeting open at 2.05pm.

The apology of Mrs Sharon Brown and Ms Jessica Heath was noted.

2. Minutes of previous meeting

A motion to accept the minutes of the meeting held on the 6th of February 2014 was passed.

3. Matters Arising

Mr Frewin reported back on the matter arising at the previous meeting:

- i) Complaint about reversing beepers

Mr Frewin reminded the meeting that concerns had been raised about noise from reversing beepers used on security patrol vehicles, which had created a nuisance to residents at night. While the Company was of the view this issue had been rectified prior to the last meeting, Mr Barnes has expressed some residual concerns. The action from that meeting was for Mr Goodwin and Mr Barnes to resolve any outstanding point's offline and report back to the Committee.

Mr Frewin reported that this matter had been investigated and resolved soon after the meeting, with an email circulated to the CCC confirming this point. Mr Barnes confirmed there had been no further incidents of this problem, and it was agreed that the matter was now resolved.

4. Enhance Place (Pine Dale Mine) Yarraboldy Extension – Company report

Mr Goodwin, assisted by Mr Eastwood, ran through a presentation outlining the progress of the mine, and environmental monitoring. The presentation is attached for further detail. The main areas of discussion for the Committee are outlined below.

4.1 Report on progress of the mine

- Operations ended in March 2014
- Since that time the mine had been in Care and Maintenance
- Regular environmental monitoring and reporting has continued
 - A list of reports produced through the year is included in the attachment.

4.2 Environmental monitoring

- It was noted that Air quality in the region was well within permitted tolerances, both during mining, and after it was completed.
- It was noted there had been no water releases from the licensed discharge point during the year, and there was nothing of note from groundwater monitoring.
- Noise and blasting was in compliance for the year on all parameters.
- Monitoring of the Purple Copper Wing Butterfly is continuing as required by approvals.

4.3 Rehabilitation works

- Through the year progress had been made on improving the vegetation cover in various areas of the rehabilitation.
- It was also noted that the visual bund had been reshaped into a more sustainable land form, and that this has been seeded during spring to create a longer term cover.
- Weed control processes were conducted through the year.
 - In response to a question, the Company confirmed that local people were being used for this work.

4.4 Mine operations plan

- Mr Eastwood gave an overview of an updated care and maintenance Mine Operations Plan (MOP), which has been prepared for the mine in consultation with regulators.
- It was noted that this plan would be placed on the Company website once formally approved.

4.5 Complaints discussion

- It was noted that only 2 complaints had been recorded for the year.
- After consideration of these complaints, the Committee considered there were no systemic issues emerging and the Company had adequately addressed the two items reported.

4.6 Exploration lease consultation

Mr Frewin noted that EL7621 was an exploration lease related to the next phase of the project. The exploration lease had been in place for many years, and was currently going through the renewal process. It was noted that the lease was part of the stage 2 development which had been under development for some time, and therefore did not represent an expansion of the Companies planned forward development area.

It was noted that the CCC was the logical point to act as Community liaison point for this Exploration lease and any other leases associated with the Pinedale operation.

4.7 Outlook for next phase of mine development

Mr Frewin outlined the current outlook for the next phase of development at Pinedale.

It was noted that a planning process was required to move forward with the next phase of the project, and the Company had been progressing background work in this regard. Full community consultation, as with any planning process, would be required prior to the next phase of development.

It was noted that the action was with the Company to move the planning process forward.

The CCC requested an update when this was ready to be progressed.

4. General Business

4.1 Correspondence

Mr. Frewin reported that the only outgoing correspondence issued had been the notice to residents of the upcoming meeting.

No written correspondence was received.

It was noted that a phone discussion had been held with a nearby resident, who had requested and reviewed the agenda. Based on this review, the resident had queried the status of EL 7621, and requested that the meeting minutes outline future plans for the mine.

These matters have been addressed earlier in these minutes.

4.3 Other business

No other business was tabled.

4.4 Next Meeting

The next meeting was to be scheduled in the middle of 2015.

Meeting closed.

Attachments:

1. Presentation used at the meeting
2. RCA report: Ground Water, Surface Water, Depositional Dust, HVAS and Meteorological monitoring report – October 2014



EnergyAustralia

PINE DALE MINE & ENHANCE PLACE MINE

Community Consultative Committee Meeting



11 December 2014

Agenda



EnergyAustralia

- Summary of Operations 2014
- Site Inspections & Reports
- Environmental Monitoring & Performance
- Rehabilitation
- Community Complaints
- General Business

Summary of Operations 2014



EnergyAustralia

- Final blast occurred in February 2014
- Final coal delivered in March 2014
- Mine in Care and Maintenance from April 2014
- No permanent fulltime employees since April 2014
- Statutory inspections being carried out

Site Inspections & Reports



EnergyAustralia

- Jan 2014 Environmental Protection Licence (EPL) Annual Return Submitted with all monitoring criteria met
- Feb 2014 Annual Environmental Management Report (AEMR) submitted
- Apr 2014 AEMR inspection by regulators
- Jul 2014 Independent Environmental Audit conducted
- Sep 2014 NPI submitted
- Oct 2014 NGERS submitted
- Care & Maintenance Mining Operating Plans submitted
- Monthly Monitoring data Uploaded to website



Monitoring & Performance



EnergyAustralia

Pine Dale Mine

- 6 Depositional Dust Gauges
- 1 High Volume Air Sampler (HVAS) – PM10
- 1 HVAS – Total Suspended Particulate (TSP)
- 1 Automatic Weather Station
- 3 Blast Monitoring Locations
- 4 EPL Surface Water Monitoring locations
- 7 Surface Water Monitoring Locations in line with site Water Management Plan
- 6 Noise Monitoring Locations
- 8 Groundwater Monitoring Locations within mine site; 7 off-site Groundwater Monitoring Locations

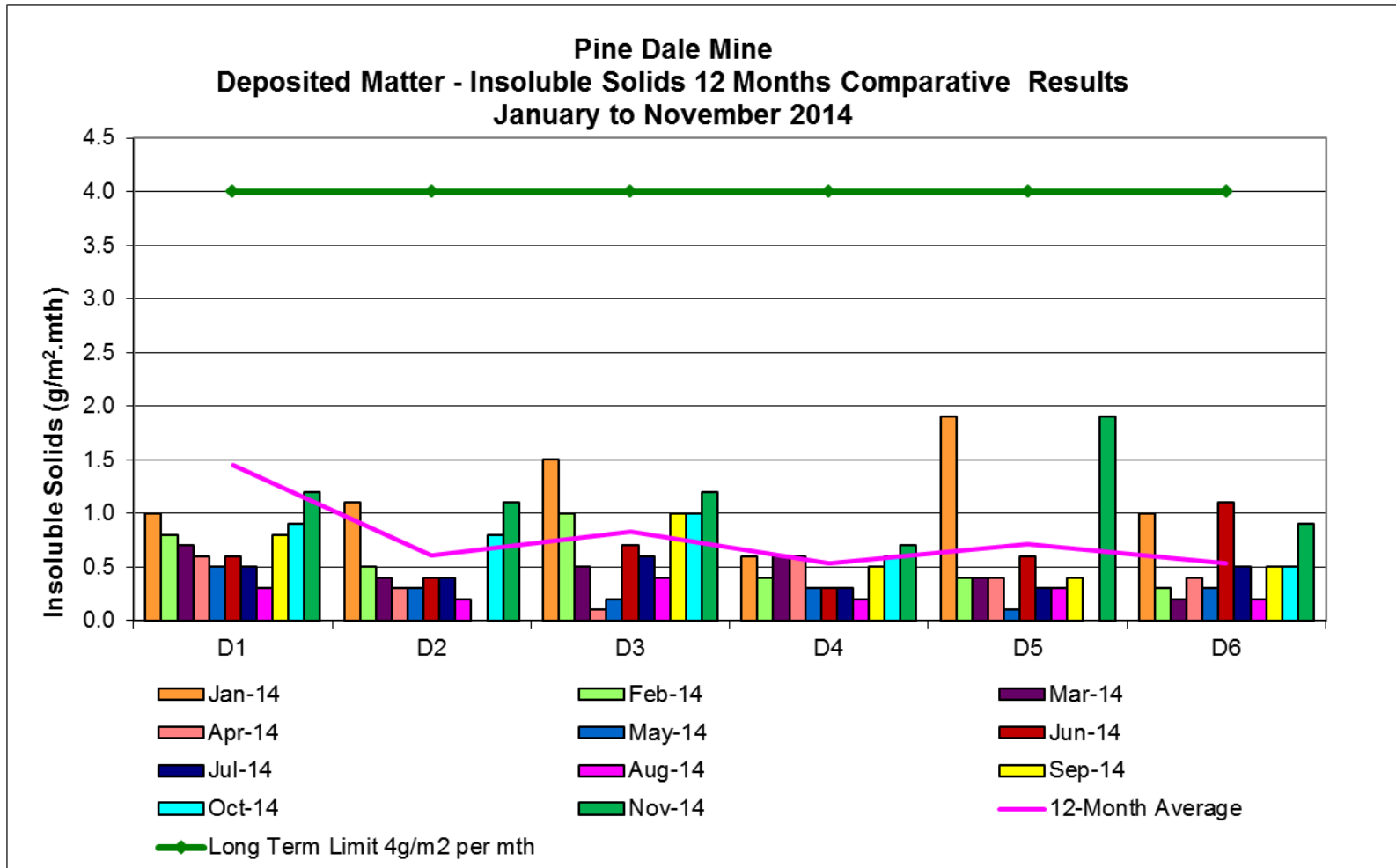


Air Quality



EnergyAustralia

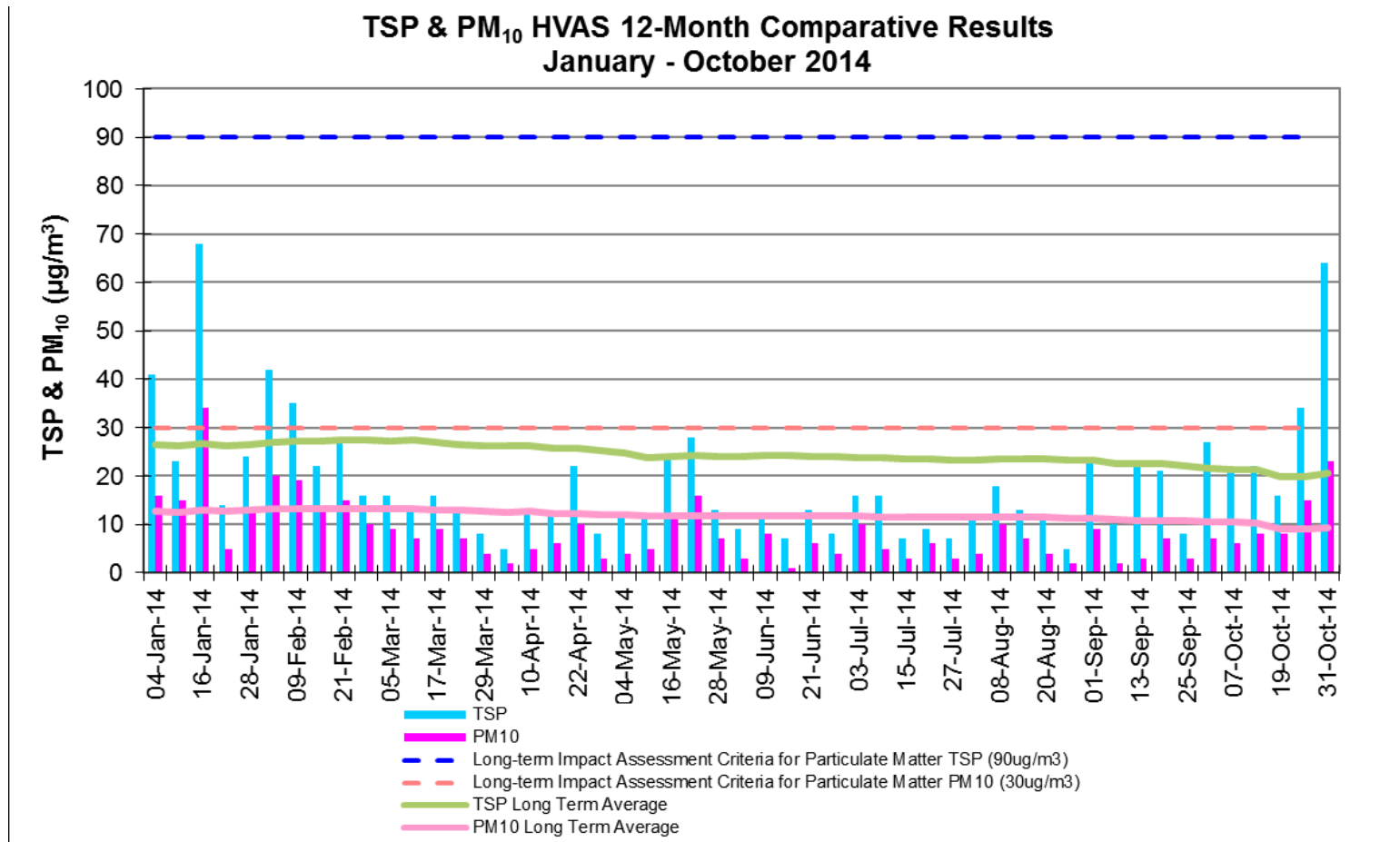
- Long term performance consistently below approval limits
- Proven track record on managing dust levels effectively



Air Quality



- No exceedance of the PM₁₀ short term (24hr) Impact Assessment Criteria *EnergyAustralia* (IAC) of 50 µg/m³
- No exceedance of the Particulate Matter (PM)₁₀ long term IAC of 30 µg/m³
- No exceedance of the TSP long term IAC of 90 µg/m³



Monitoring & Performance



EnergyAustralia

Water Management

- PDM is generally a net user of water
- No surface water discharges occurred during 2014
- No adverse results were recorded at points 2, 3 & 14 during the reporting period
- There has been no significant change or adverse trends identified relating to water depth or quality in 2014



Monitoring & Performance



EnergyAustralia

Sediment Control

- Closed water management system to ensure no uncontrolled discharge of water from site
- Windrows and silt fencing installed
- Sediment removed from haul road drains
- Rock lined drains and contour drains maintained in rehabilitation areas
- Temporary sediment ponds to capture 'dirty' water maintained
- Ongoing water monitoring, erosion control & maintenance



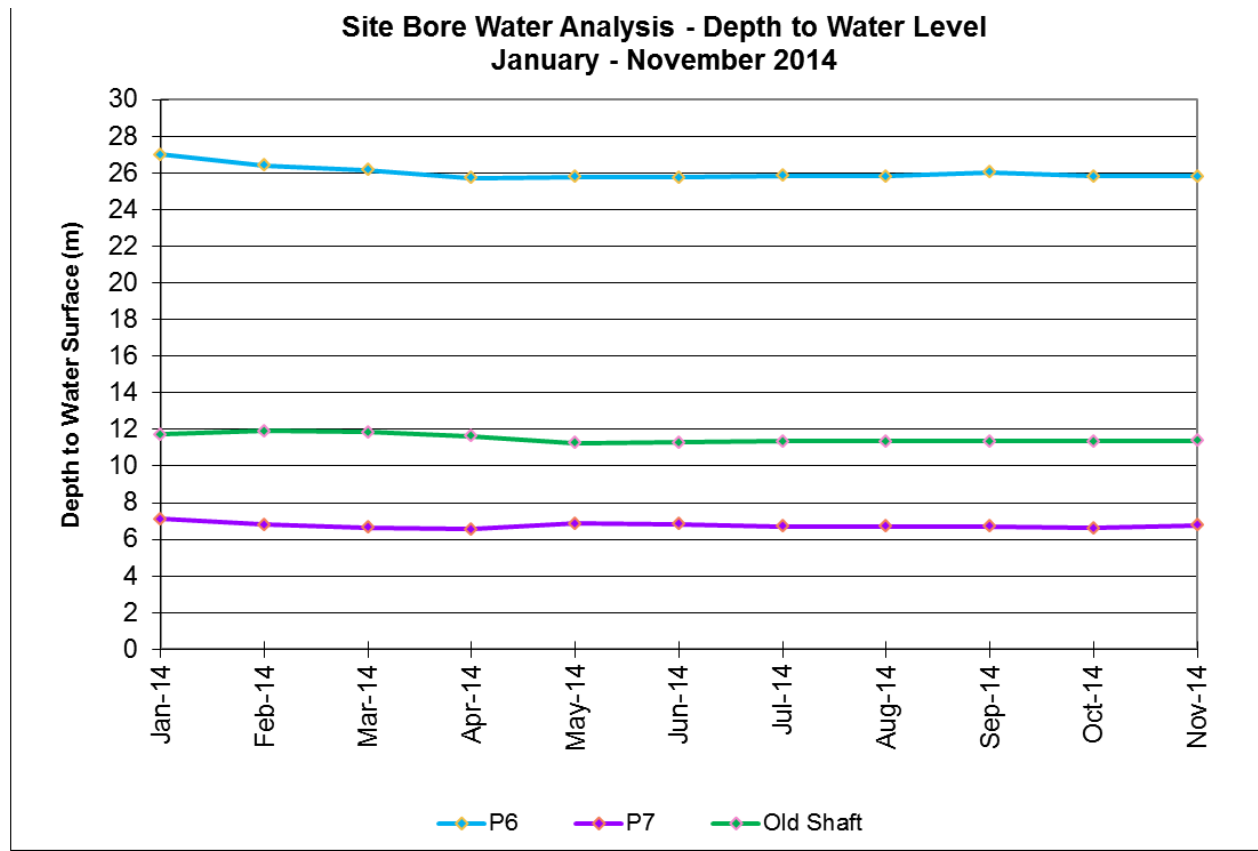
Monitoring & Performance



EnergyAustralia

Groundwater

- Groundwater monitoring generally show water quality that complies with the adopted trigger levels (PH, EC and Standing Water Level)
- All site bores exhibited consistent standing water levels in 2014
- Water levels were not exceeded at any time at the onsite groundwater bores



Monitoring & Performance



EnergyAustralia

Noise

- Noise monitoring conducted in Jan, Apr and Sep 2014 with further monitoring to occur in Dec
- No exceedance of noise criteria were recorded in 2014

Blasting

- There have been no blast events since February 2014
- Monitoring is only conducted during a blast event
- There have been no exceedance of ground vibration or overpressure limits associated with blasting in 2014

Purple Copper Wing Butterfly

- 2014 monitoring indicated the local population is active and thriving adjacent previous mining area
- Monitoring will continue as required

Rehabilitation



EnergyAustralia

- Annual Rehabilitation Surveys conducted in Nov 2014
 - Targeted weed spraying has been effective
 - Mulching & fertilising has improved vegetation cover in rehab areas
- Rehabilitation areas inspected by Agronomist from SLR Consulting in Oct 2014, recommendations will be implemented moving forwards
- Visual bund reshaped Apr 2014 and seeded in Oct 2014
- Up to 500 tube stock trees planted in Jul 2014 to assist with rehabilitation around the infrastructure area (office and workshop)
- Ongoing weed control throughout 2014

Rehabilitation



EnergyAustralia

Temporary Rehab Nov 2014



Area A – Nov 2014



Amenity Bund - Nov 2014
(Seeded Oct 2014)



Rehabilitation



EnergyAustralia

Area B – Nov 2014



Area C – Nov 2014



Community Complaints



EnergyAustralia

Pine Dale Mine – Complaints Received

Aspect	2012	2013	2014
Noise	2	3	1
Air Quality	4	1	0
Blasting	26	9	0
Traffic	1	0	0
Water	0	0	0
Other	2	0	1
Sub Total	35	13	2

Enhance Place Mine



EnergyAustralia

- Mine rehabilitation complete, no additional rehabilitation works occurred during the reporting period
- Maintenance work undertaken including weed spraying and fencing of rehabilitated areas
- Rehabilitated land demonstrated to support livestock grazing by current property owner during
- Annual monitoring of rehabilitated land will continue while Enhance Place hold mining authorities over the area



General Business



EnergyAustralia

- Pine Dale Mine Stage 2 Extension
- Gundungurra Tribal Council Update

**SURFACE WATER, DEPOSITIONAL DUST,
HVAS AND METEOROLOGICAL MONITORING**

Prepared for Pine Dale Mine Community Consultative Committee

Prepared by RCA Australia

RCA ref 6880-864/0

October 2014



RCA AUSTRALIA

ABN 53 063 515 711

92 Hill Street, CARRINGTON NSW 2294


Telephone: +61 2 4902 9200

Facsimile: +61 2 4902 9299

Email: administrator@rca.com.au

Internet: www.rca.com.au

This document is and shall remain the property of RCA Australia. The document may only be used for the purpose for which it was commissioned and in accordance with the Terms of Engagement for the commission supplied at the time of proposal. Unauthorised use of this document in any form whatsoever is prohibited.

DOCUMENT STATUS						
Rev No	Comment	Author	Reviewer	Approved for Issue (Project Manager)		
				Name	Signature	Date
/0	Final	C Rocher	K Tripp	K Tripp		17.11.14

DOCUMENT DISTRIBUTION				
Rev No	Copies	Format	Issued to	Date
/0	1	Electronic (email)	Pine Dale Mine – Graham Goodwin graham.goodwin@energyaustralia.com.au	17.11.14
/0	1	Electronic (email)	EnergyAustralia – Tom Hurdley tom.hurdley@energyaustralia.com.au	17.11.14
/0	1	Electronic (email)	EnergyAustralia- Mark Frewin mark.frewin@energyaustralia.com.au	17.11.14
/0	1	Electronic (email)	Lithgow City Council – Andrew Muir andrew.muir@lithgow.nsw.gov.au	17.11.14
/0	1	Electronic report	RCA – job archive	17.11.14



RCA LE ref 6880-864/0



17 November 2014

Pine Dale Mine
PO Box 202
WALLERAWANG NSW 2845

Attention: Mr Graham Goodwin

**REPORT COMPILED FOR
PINE DALE MINE COMMUNITY CONSULTATIVE COMMITTEE
DETAILING SURFACE WATER, GROUNDWATER DEPOSITIONAL DUST,
HVAS AND METEOROLOGICAL MONITORING
OCTOBER 2014**

1 GENERAL COMMENTS

Job Number: 6880.

Date Samples Received: During the month of October 2014.

Samples received were sampled by RCA Laboratories – Environmental staff.

This report satisfies the requirements to monitor environmental parameters as presented in the Pine Dale Mine Environmental Protection Licence (EPL 4911).

2 ANALYTICAL PROCEDURES

The analytical procedures used by RCA Laboratories – Environmental are based on established internationally recognised procedures such as APHA and Australian Standards. Analytical test methods are detailed in **Table 1**. When an external testing laboratory is used to obtain the analysis of samples which become a part of this report, then the details of that laboratory's official report will be attached in an Appendix.

Table 1 Analytical Test Methods

ANALYSIS	METHOD	UNITS	ANALYSING LABORATORY	NATA / NON-NATA ANALYSIS
Determination of Suspended Particulate Matter	ENV-LAB003	µg/m ³	RCA Laboratories – Environmental	NATA Analysis
Determination of Particulate Matter – Deposited Matter	ENV-LAB004	g/m ² .month	RCA Laboratories – Environmental	NATA Analysis
pH	ENV-LAB006	pH	RCA Laboratories – Environmental	NATA Analysis
Conductivity	ENV-LAB010	µS/cm	RCA Laboratories – Environmental	NATA Analysis
Total Suspended Solids	ENV-LAB009	mg/L	RCA Laboratories – Environmental	NATA Analysis
Turbidity	ENV-LAB037	NTU	RCA Laboratories - Environmental	NATA Analysis
Oil and Grease	ENV-LAB022	mg/L	RCA Laboratories - Environmental	Non-NATA Analysis
Major Anions (Alkalinity, Cl, SO ₄)	ED037, ED041, ED045	mg/L	ALS	NATA Analysis
Major Cations (Ca, Mg, Na, K)	ED093	mg/L	ALS	NATA Analysis
Dissolved Metals	EG020F	mg/L	ALS	NATA Analysis

3 WATER MONITORING RESULTS

3.1 GROUNDWATER

A total of 2 on-site groundwater samples were collected during the month of October 2014. Sampling at Bores P2, P3 and P7a are no longer required under the new sampling regime undertaken in accordance with Project Approval (PA 10_0041) and the Pine Dale Mine Water Management Plan (Report No. 613/20). The new sampling regime commenced 1 August 2013. Water quality analysis results are shown in **Table 2**.

Table 2 Groundwater Analysis Results

ANALYSIS	UNITS	P6	P7
Sample Number	-	10146880009	10146880010
Date Sampled	-	20/10/2014	20/10/2014
Time Sampled	-	13:16	14:30
Depth to Water from Surface*	m	25.82	6.63
Water Level (AHD)	m	891.13	887.77
Temperature	°C	16.5	15.0
pH	pH	6.24	6.23
Conductivity	µS/cm	1115	738
Turbidity	NTU	35	
Dissolved Oxygen	mg/L	6.4	
TSS	mg/L	36	
Oil & Grease	mg/L	<2	
Bicarbonate Alkalinity (CaCO ₃)	mg/L	38	
Total Alkalinity (CaCO ₃)	mg/L	38	
Sulfate (as SO ₄)	mg/L	522	
Chloride	mg/L	35	
Calcium	mg/L	120	
Magnesium	mg/L	56	
Sodium	mg/L	40	
Potassium	mg/L	20	
Cobalt (dissolved)	mg/L	0.066	
Manganese (dissolved)	mg/L	2.5	
Nickel (dissolved)	mg/L	0.107	
Zinc (dissolved)	mg/L	0.206	
Iron (dissolved)	mg/L	25.0	

NOTES: *Depth relative to ground level (not standpipe height).

■ Indicates analysis was not required

Groundwater monitoring locations are shown in **Appendix 1**.

3.2 EPA SURFACE WATER MONITORING

Routine quarterly surface waters were not scheduled to be monitored this month. Quarterly surface water monitoring is next scheduled to be undertaken in November 2014.

4 AIR QUALITY MONITORING RESULTS

4.1 HIGH VOLUME AIR SAMPLERS (HVAS)

HVAS at this facility conform to AS/NZS 3580.9.3:2003, AS/NZS 3580.9.6:2003 and AS/NZS 3580.1.1:2007.

HVAS Total Suspended Particulate analysis results are shown in **Table 3**.

PM₁₀ Suspended Particulate Matter results are shown in **Table 4**.

Table 3 Total Suspended Particulates ($\mu\text{g}/\text{m}^3$ 0°C 101.3 kPa)

RUN DATE	TSP ($\mu\text{g}/\text{m}^3$)	SAMPLE NUMBER	FILTER NUMBER	DATE FILTER OFF	TIME FILTER OFF	FIELD TECH	HOURS RUN
01-Oct-14	27	10146880029	8902974	03-Oct-14	12:05	Client	24.00
07-Oct-14	21	10146880031	8902976	10-Oct-14	10:07	Client	24.00
13-Oct-14	22	10146880033	8902978	17-Oct-14	9:40	Client	24.00
19-Oct-14	16	10146880035	8902980	21-Oct-14	7:15	Client	24.00
25-Oct-14	34	10146880037	8902982	27-Oct-14	7:45	Client	24.00
31-Oct-14	64	10146880039	8902984	03-Nov-14	10:00	Client	24.00

Table 4 Suspended Particulate Matter PM₁₀ ($\mu\text{g}/\text{m}^3$ 0°C 101.3 kPa)

RUN DATE	PM ₁₀ ($\mu\text{g}/\text{m}^3$)	SAMPLE NUMBER	FILTER NUMBER	DATE FILTER OFF	TIME FILTER OFF	FIELD TECH	HOURS RUN
1-Oct-14	7	10146880030	8902975	03-Oct-14	12:08	Client	24.00
7-Oct-14	6	10146880032	8902977	10-Oct-14	10:11	Client	24.00
13-Oct-14	8	10146880034	8902979	17-Oct-14	9:42	Client	24.00
19-Oct-14	8	10146880036	8902981	21-Oct-14	7:18	Client	24.00
25-Oct-14	15	10146880038	8902983	27-Oct-14	7:47	Client	24.00
31-Oct-14	23	10146880040	8902985	03-Nov-14	10:08	Client	24.00

4.1.1 TSP Summary

The EPA Annual Mean TSP allowable limit is $90\mu\text{g}/\text{m}^3$. All TSP HVAS results recorded during this monitoring period are in compliance with consent conditions, as the *current rolling annual mean* (from November 2013 to October 2014) for the TSP unit is $20.6\mu\text{g}/\text{m}^3$, which is well below the allowable limit of $90\mu\text{g}/\text{m}^3$.

4.1.2 PM₁₀ Summary

The EPA 24h Maximum PM₁₀ allowable limit is $50\mu\text{g}/\text{m}^3$. The EPA Annual Mean PM₁₀ allowable limit is $30\mu\text{g}/\text{m}^3$. All PM₁₀ HVAS results recorded during this monitoring period conform to consent conditions, as the *current rolling annual mean* for the PM₁₀ unit is $11.2\mu\text{g}/\text{m}^3$, which is below the allowable limit of $30\mu\text{g}/\text{m}^3$. The 24 hour maximum allowable limit of $50\mu\text{g}/\text{m}^3$ was not exceeded during the month of October 2014.

4.1.3 Comments

HVAS monitoring locations are shown in **Appendix 1**.

Graphical HVAS results presentations are shown in **Appendix 2**.

4.2 DEPOSITIONAL DUST

Depositional Dust Gauges at this facility conform to AS/NZS 3580.10.1:2003 and AS/NZS 3580.1.1:2007. Depositional Dust monitoring results are shown in **Table 5**.

Table 5 *Depositional Dust Monitoring - Deposited Matter October 2014*

SAMPLE NUMBER	DEPOSIT GAUGE	DATE SAMPLE STARTED	DATE SAMPLE COMPLETED	NUMBER OF DAYS	NOTES	INSOLUBLE SOLIDS (g/m ² .month)	ASH (g/m ² .month)	COMBUSTIBLE MATTER (g/m ² .month)
10146880019	D1	18/09/2014	20/10/2014	32	IT	0.9	0.4	0.5
10146880020	D2	18/09/2014	20/10/2014	32	I	0.8	0.4	0.4
10146880021	D3	18/09/2014	20/10/2014	32	I	1.0	0.5	0.5
10146880022	D4	18/09/2014	20/10/2014	32	I	0.6	0.3	0.3
10146880023	D5	18/09/2014	20/10/2014	32	EB	--	--	--
10146880024	D6	18/09/2014	20/10/2014	32	I	0.5	0.3	0.2

4.2.1 Glossary of Terms Used in Notes

I	Insects (eg, Ants, spiders)	IT	Insects (eg, Ants, spiders) and Tree litter
EB	Invalid sample: excess bird droppings		

4.2.2 Allowable Depositional Dust Limits

The EPA Long Term (Annual Average) Dust Limit is 4g/m² per month. All Depositional Dust results during this monitoring period are in compliance with consent conditions. The Annual Average for Dust Gauges D1, D2, D3, D4, D5 and D6 are all less than or equal to 1.5g/m² per month, which is below the allowable Annual Average Long Term Limit of 4g/m² per month.

Depositional Dust monitoring locations are shown in **Appendix 1**. Graphical Depositional Dust results are shown in **Appendix 2**.

5 BLASTING RESULTS

No blasting was undertaken during this month as mining operations have ceased since the end of March 2014.

6 NOISE MONITORING RESULTS

Routine quarterly noise monitoring was not required to be undertaken this month. Noise monitoring is next scheduled to be undertaken during December 2014.

7 OPERATIONAL ACTIVITIES

All of the approved minable reserves at the Pine Dale Mine have now been exhausted. Operational mining and the last coal sales ceased as of the end of March 2014.

All former operators have been made redundant; however some statutory positions still remain. Pine Dale Mine has been placed in care and maintenance since April 2014.

8 SUMMARY

During the month of October 2014 all environmental monitoring constituents were found to be in compliance with EPL 4911.

Rolling annual averages from both the TSP and PM₁₀ High Volume Air Samplers are currently well below the EPA Annual Mean TSP and PM₁₀ criterion of 90µg/m³ and 30µg/m³ respectively.

Currently there are no depositional dust gauge results which are greater than the EPA Long Term (annual average) criteria of 4g/m².month based upon a rolling average of the past 12 months.

Pine Dale Mine ceased operation in March 2014 and therefore no blasting occurred at the site.

This report must not be reproduced except in full. Results or figures from this report must not be used without acknowledgment.

Please contact the undersigned if you have any queries.

Yours sincerely



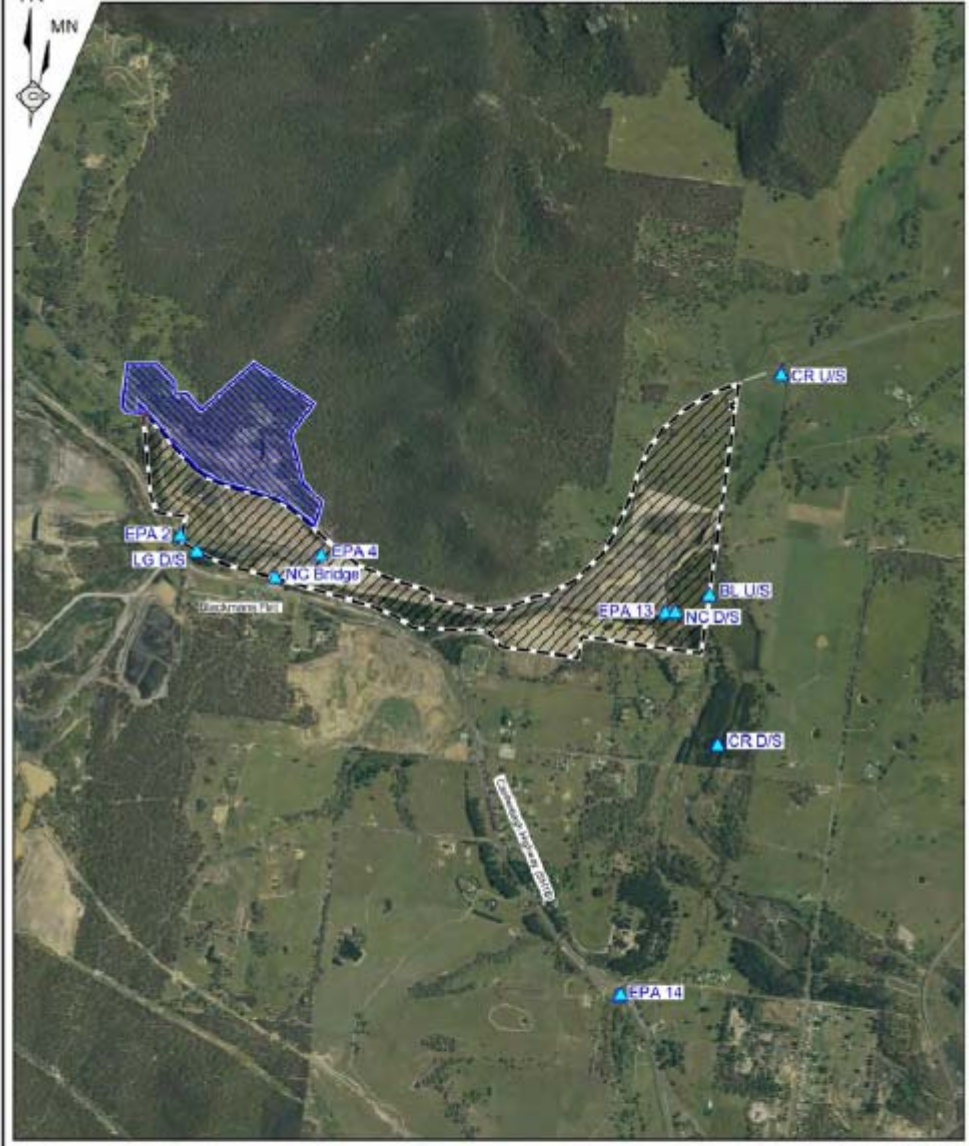
Carmen Rocher
Environmental Engineer
RCA Australia Pty Ltd trading as
RCA Laboratories – Environmental



Karen Tripp
Senior Environmental Scientist/Hygienist
RCA Australia Pty Ltd trading as
RCA Laboratories – Environmental

Appendix 1

Surface Water Groundwater and Air Quality Monitoring Locations



REFERENCE
Pine Dale Coal Mine
Yarraboldy Extension
EPA 14 Surface Water Monitoring Location

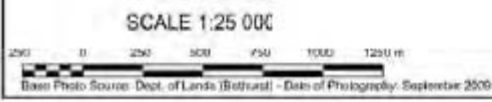
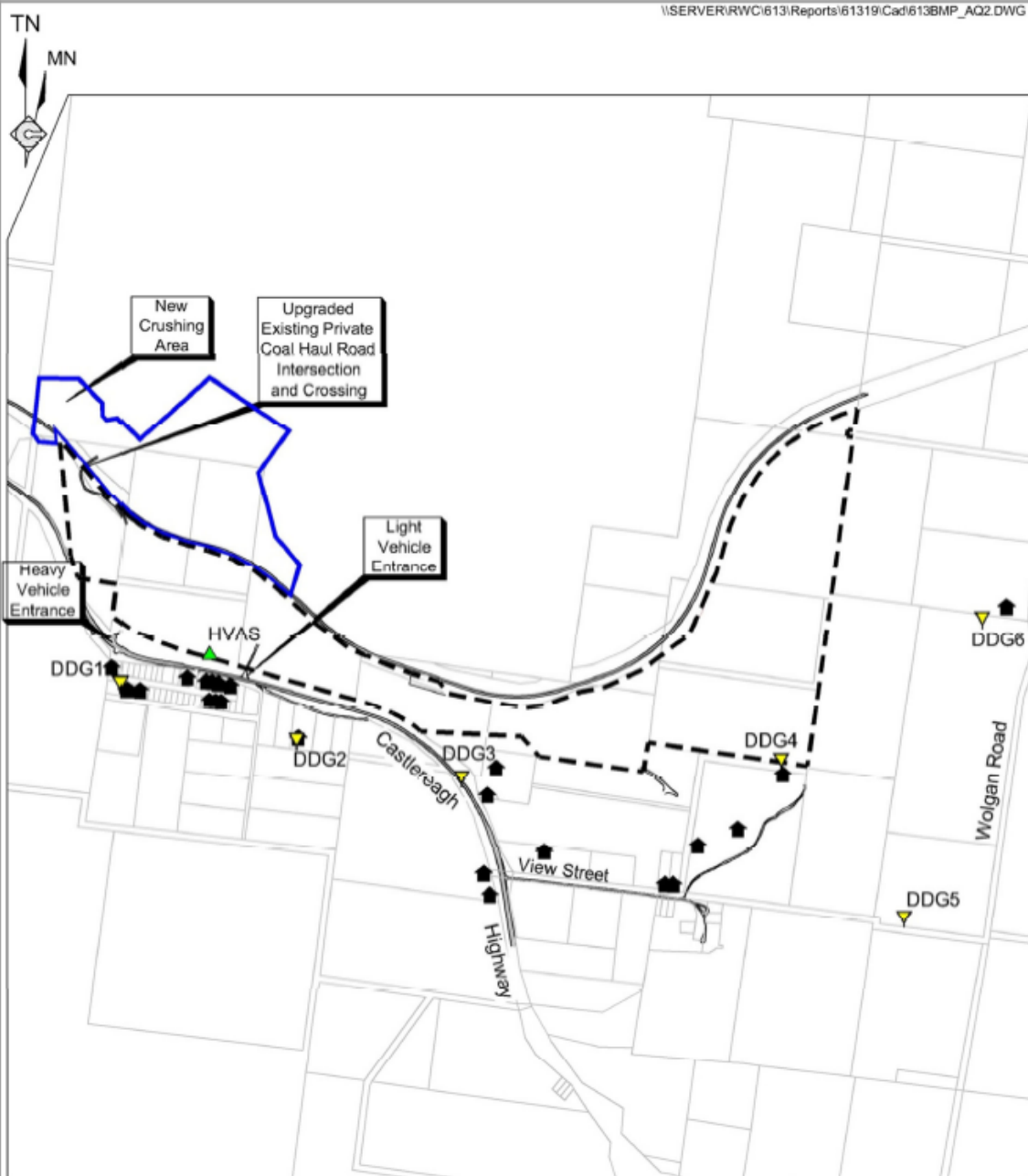


Figure WM5
SURFACE WATER
MONITORING LOCATIONS





- REFERENCE
- Pine Dale Coal Mine
 - Yarraboldy Extension
 - Cadastral Boundary
 - 🏠 Residence
 - DDG1 ▾ Air Quality Monitoring Location (Deposited Dust)
 - HVAS ▲ Air Quality Monitoring Location (High Volume Sampling)

SCALE 1:20 000

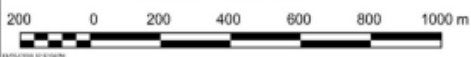
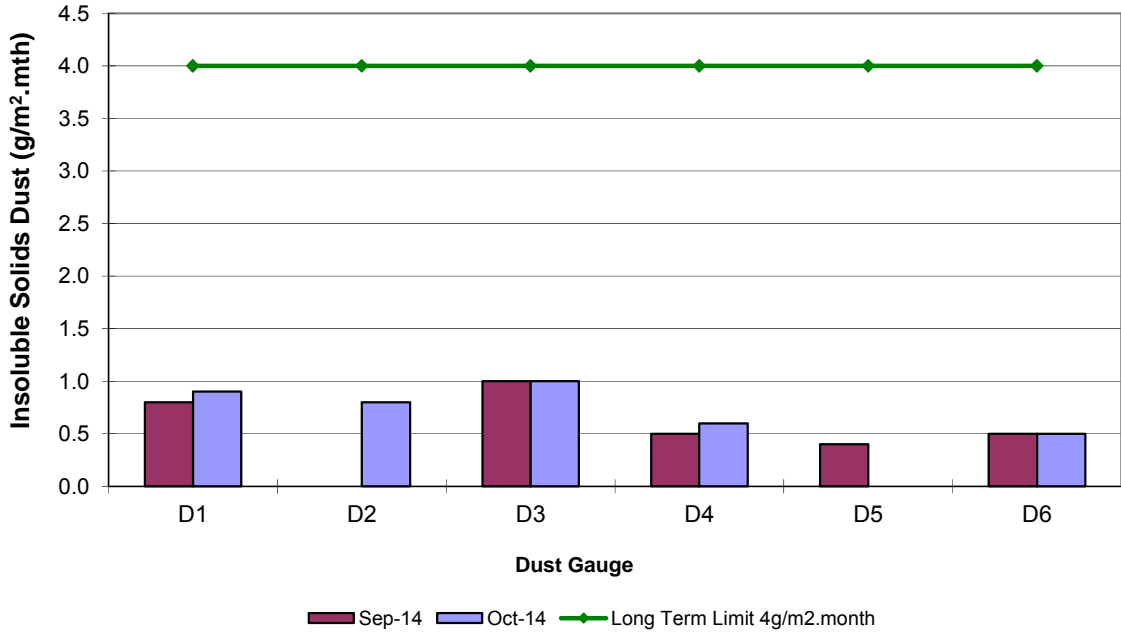


Figure AQ2
AIR QUALITY MONITORING
LOCATIONS

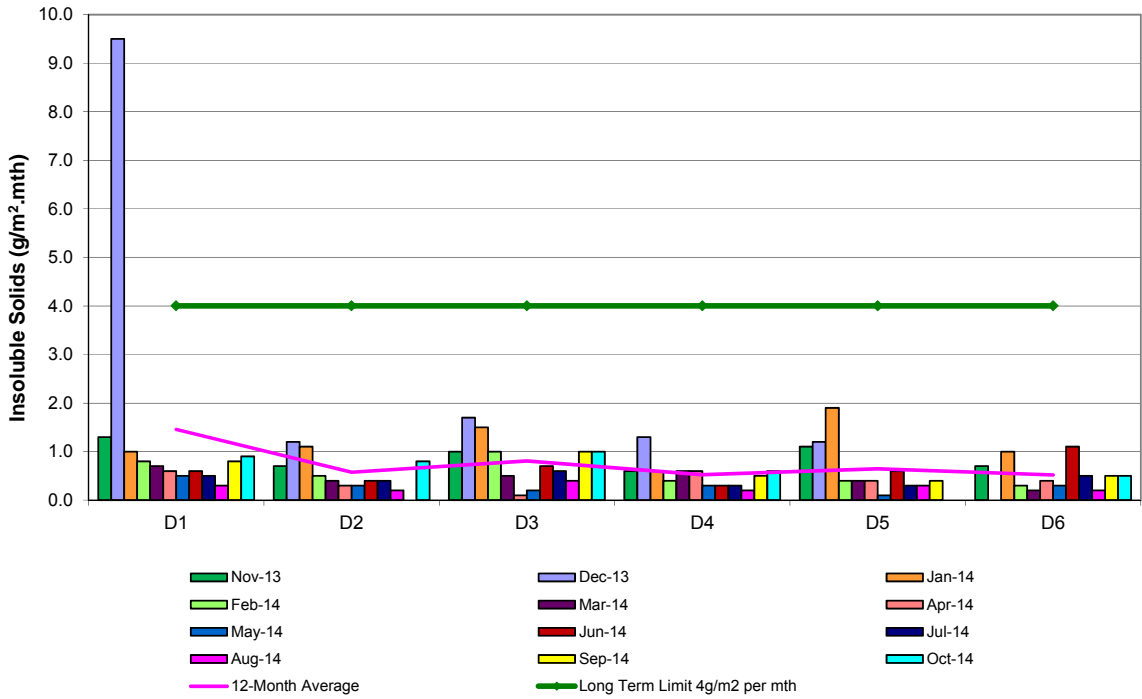
Appendix 2

Depositional Dust, HVAS and Blast Result Graphs

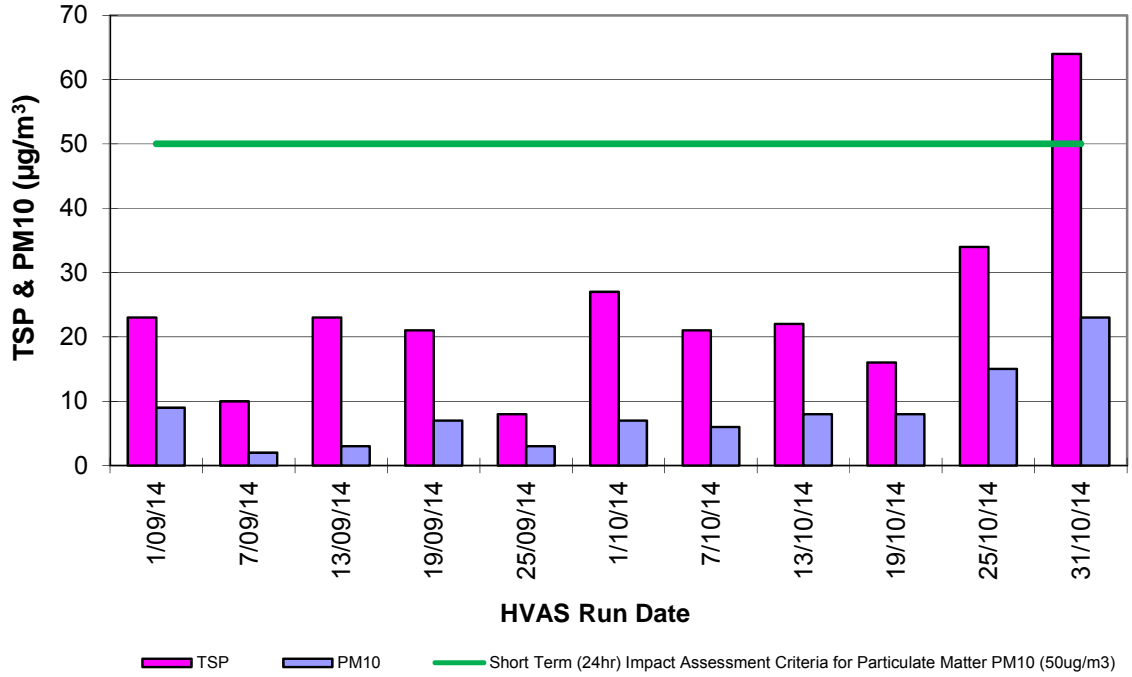
**Pine Dale Mine
Depositional Dust Gauge Comparative Results
September 2014 to October 2014**



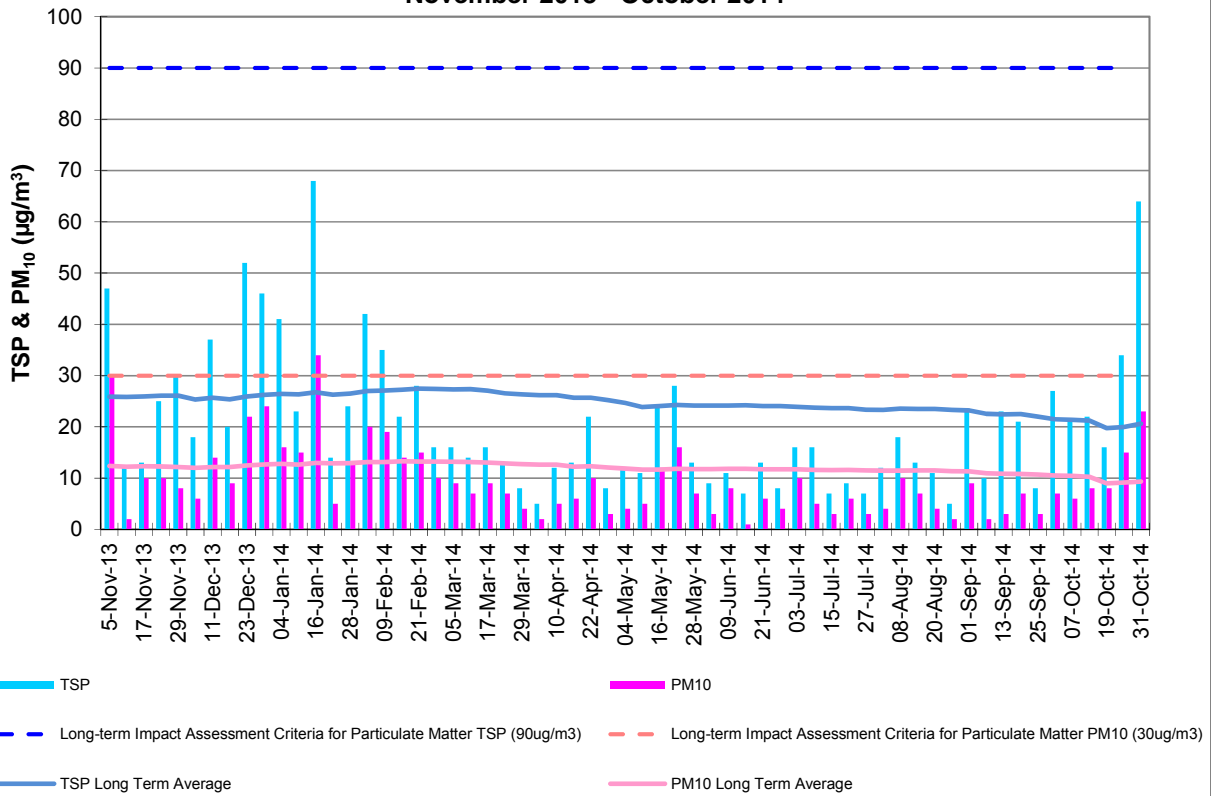
**Pine Dale Mine
Deposited Matter - Insoluble Solids 12 Months Comparative Results
November 2013 to October 2014**



**Pine Dale Mine
TSP & PM₁₀ Results
September - October 2014**

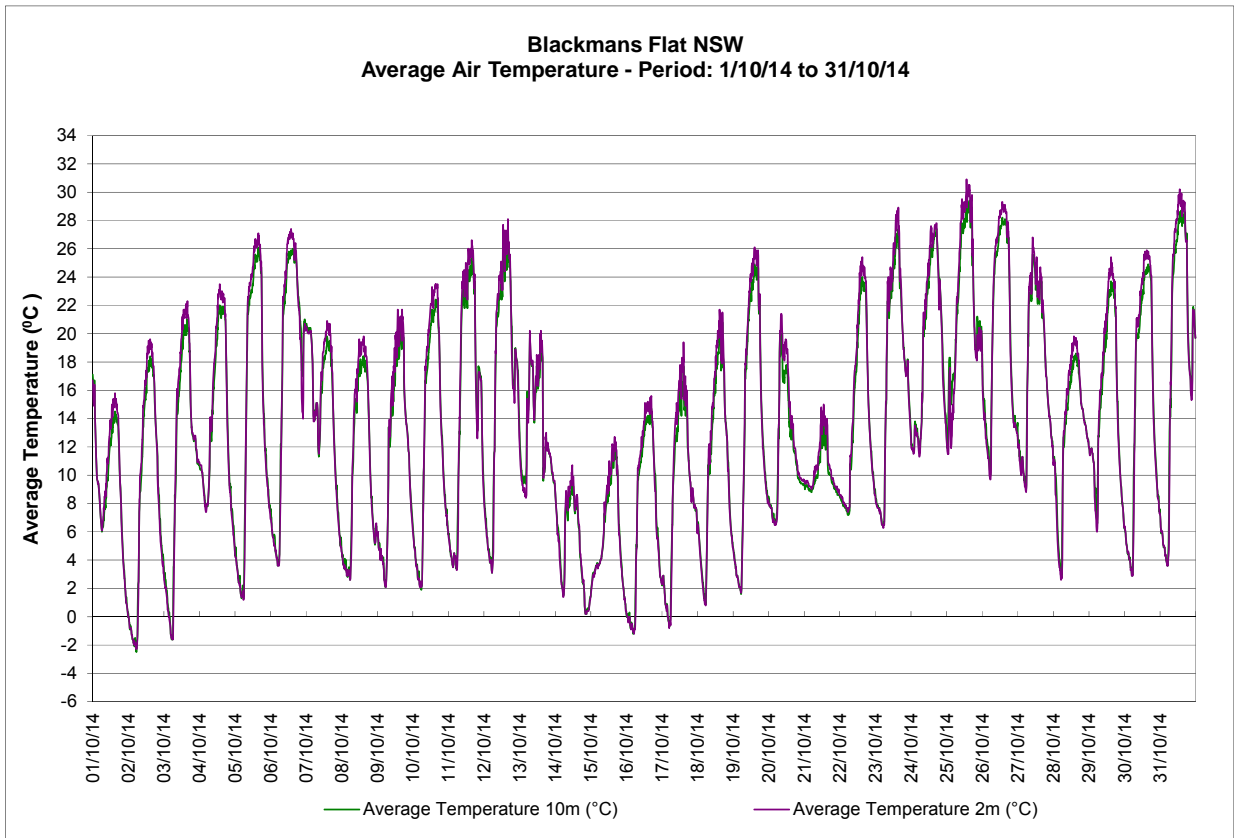
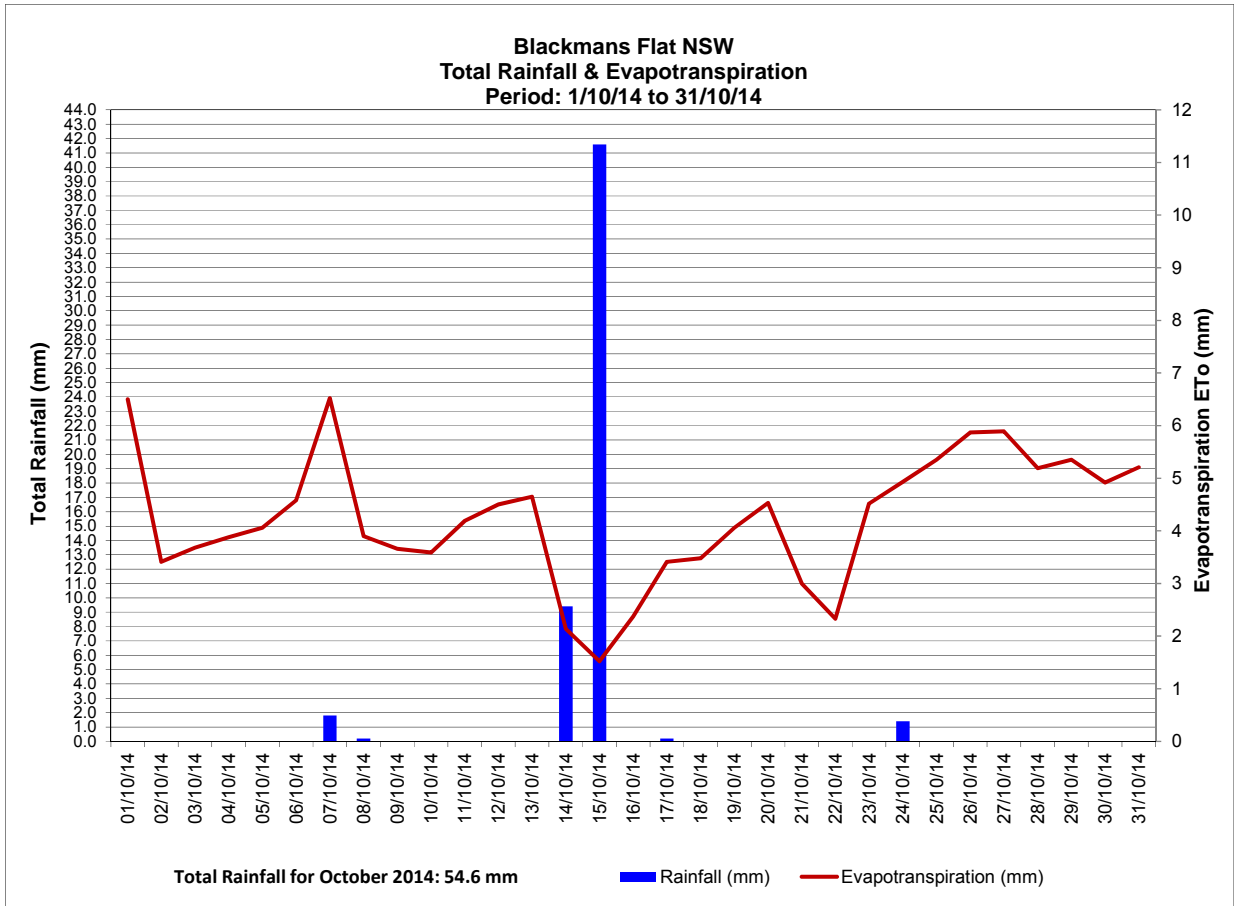


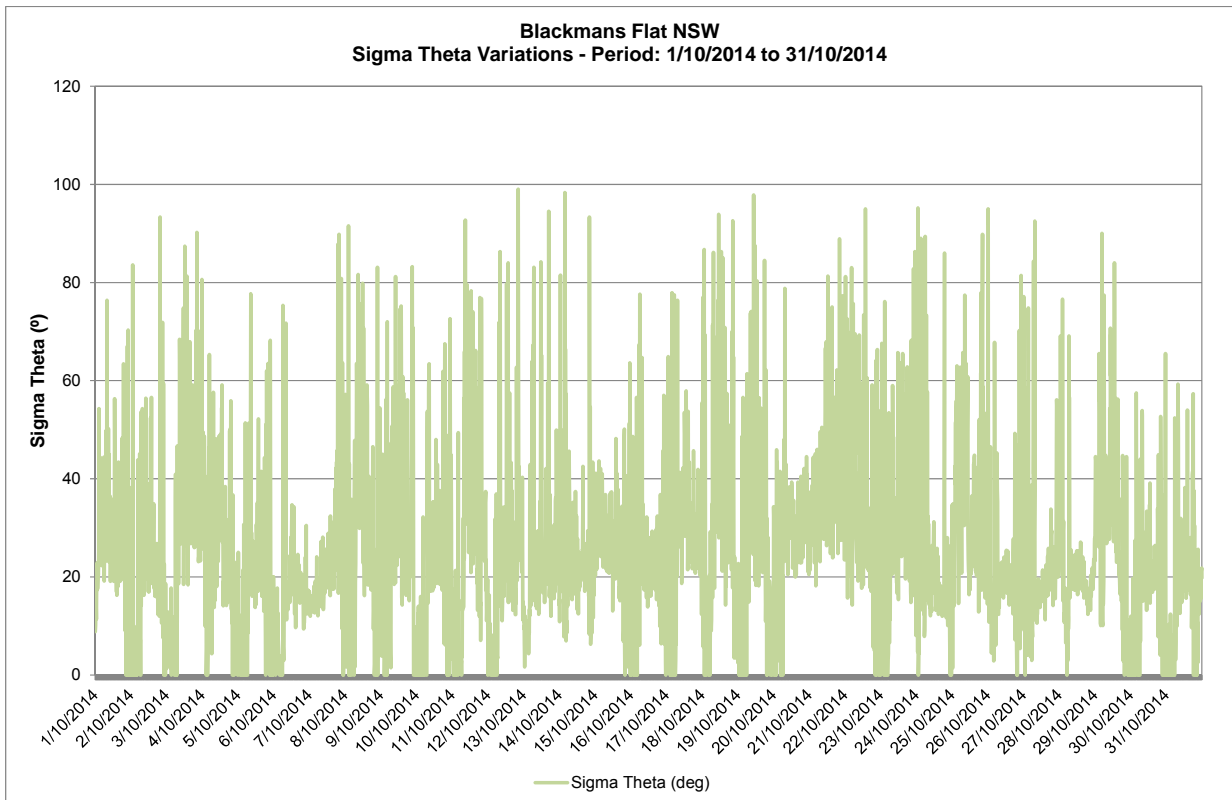
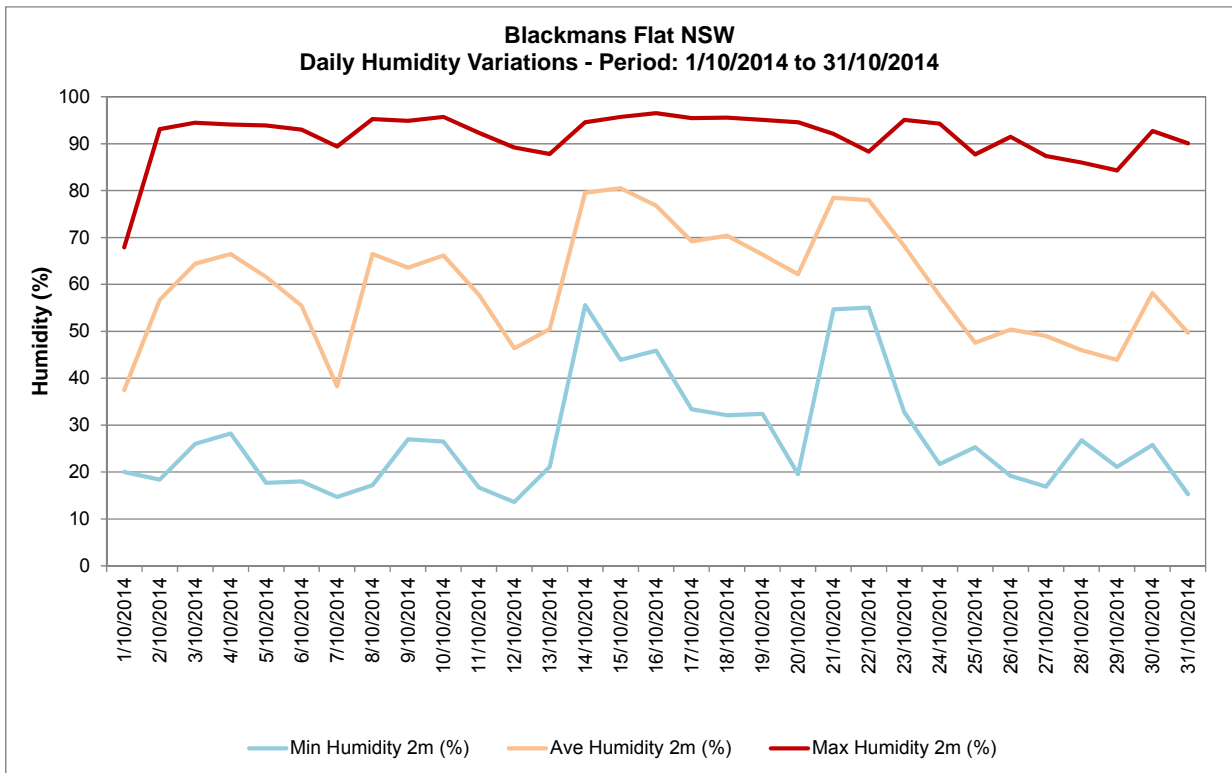
**Pine Dale Mine
TSP & PM₁₀ HVAS 12-Month Comparative Results
November 2013 - October 2014**

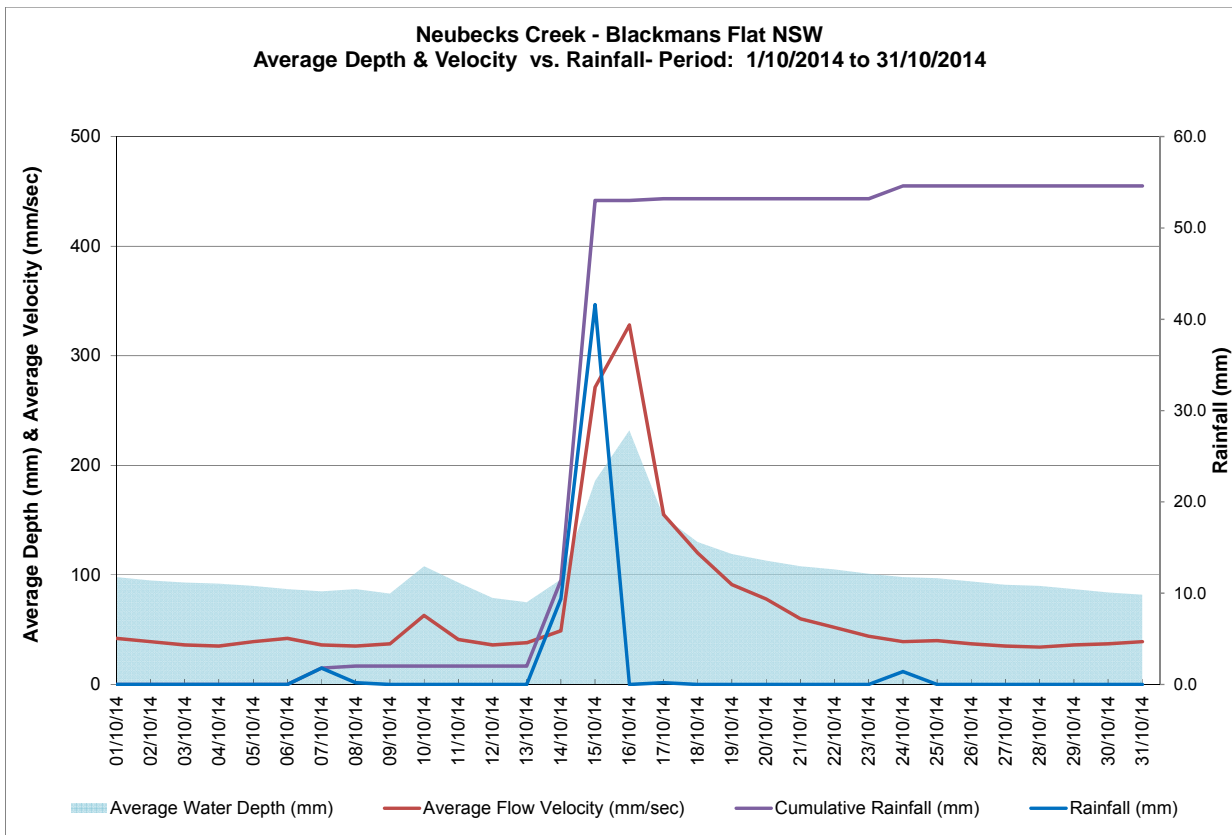
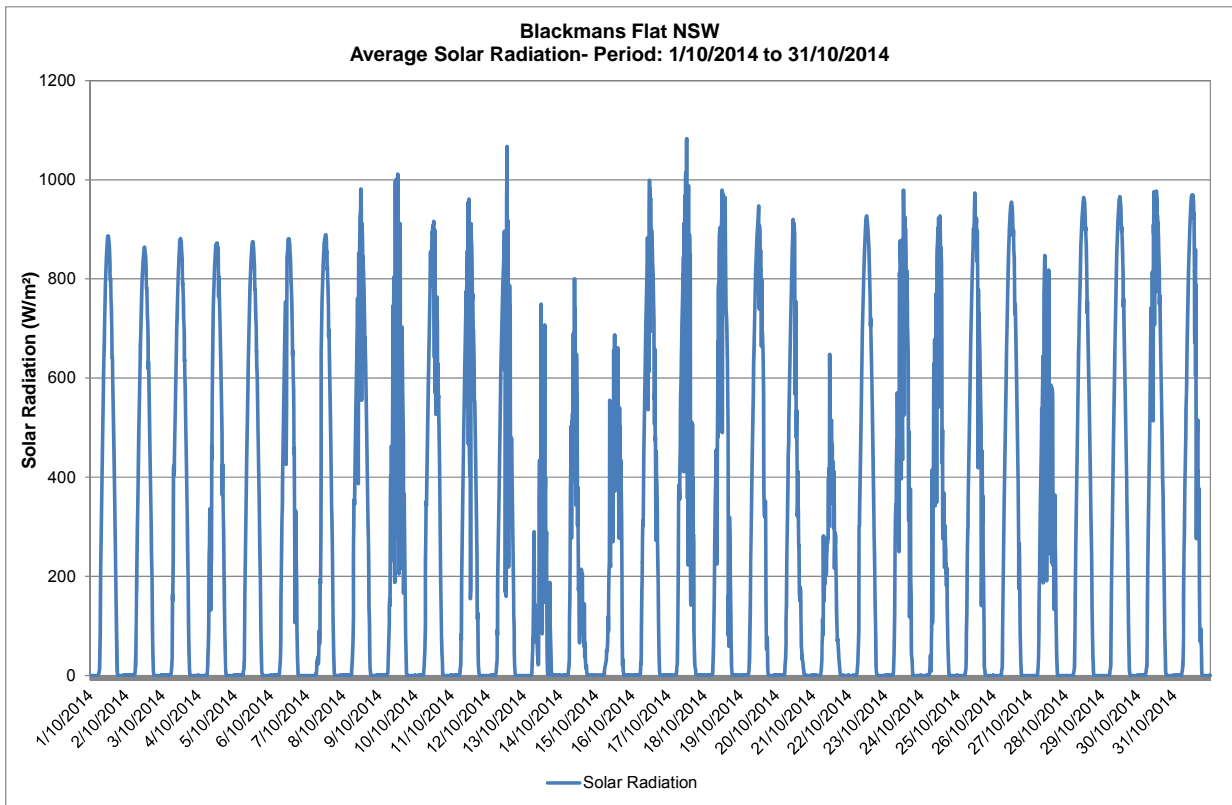


Appendix 3

Meteorological Data

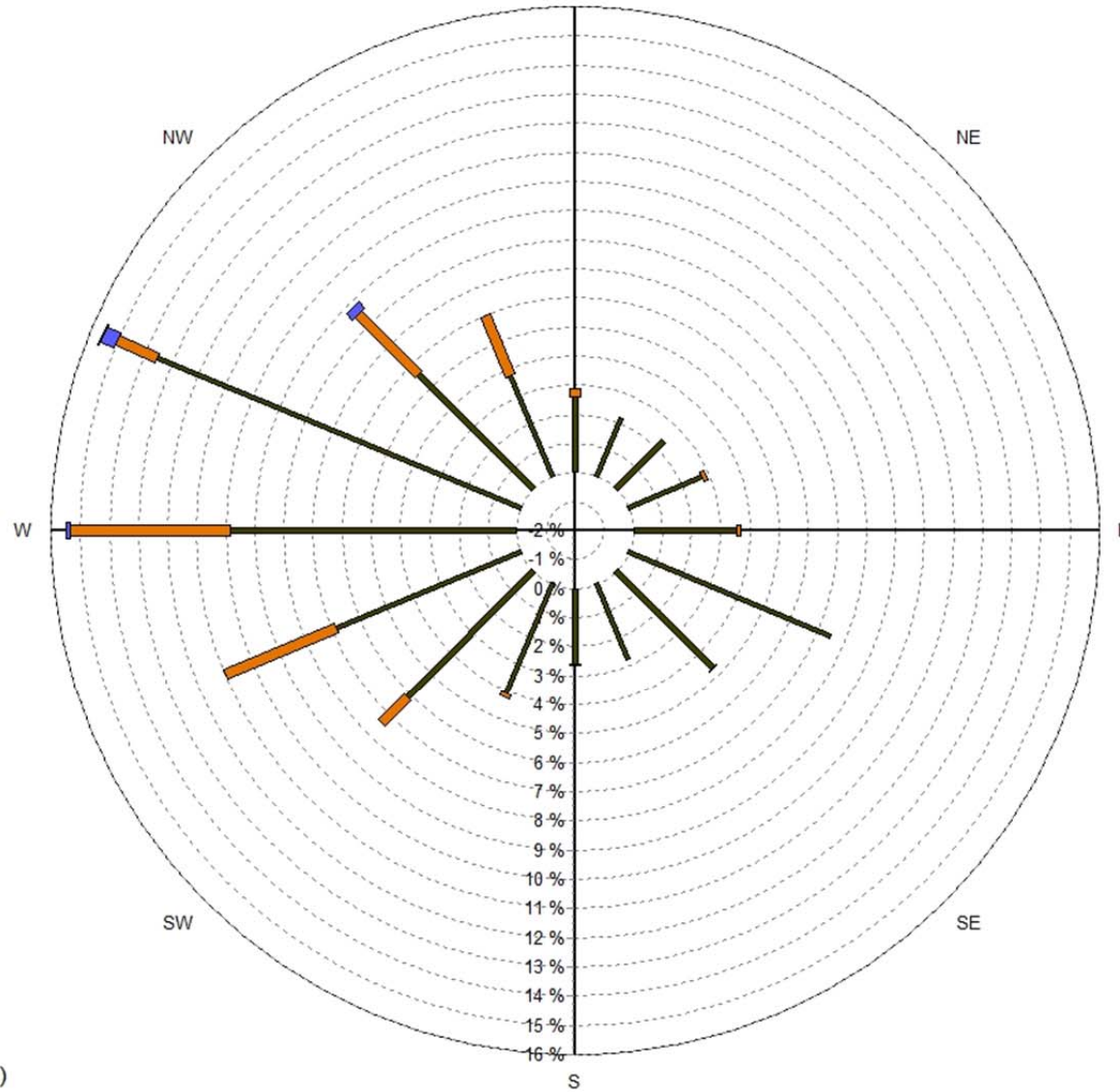
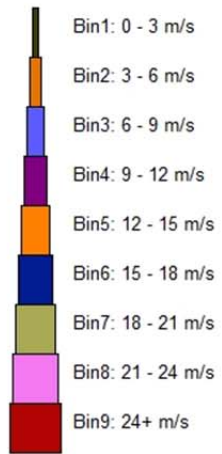






Blackmans Flat Windrose

1/10/2014 to 31/10/2014
N



Source data:
Metford.SCM
10 minutely data - Ave WndDir (deg)
10 minutely data - Ave WindSpd (m/sec)