

Meeting note

EnergyAustralia

Project	EnergyAustralia Lithgow CCC	Date	6 December 2021
Chair	Brendan Blakeley	Recorder	Ella Burgess
Attendees	Lauren Stevens, CCC member Jamie Giokaris, CCC member Julie Favell, CCC member Jim Whitty, CCC member Michelle Blackley, EnergyAustralia Steve Marshall, EnergyAustralia	Apologies	Jill Cusack, CCC member Aunty Helen Riley, CCC member Clr Joe Smith, CCC member Rob Cluff, CCC member

Item	Discussion Point	Actions
1.	<p>Welcome and introductions</p> <ul style="list-style-type: none"> - The meeting began at 5:08pm. - The Chair welcomed all members and gave a Welcome to Country. - The Chair ran through the agenda for the meeting and noted apologies. 	
2.	<p>Review of previous meeting minutes</p> <ul style="list-style-type: none"> - The Chair called for comments on the previous meeting minutes. <ul style="list-style-type: none"> - No comments were noted, the meeting minutes were adopted. - Michelle noted that there would be a community presentation on the Pumped Hydro project on Wednesday 8 December at the local Bowling Club. - The Chair told members that the first CCC meeting for 2022 would occur 20 minutes earlier than the usual 5pm start as a new site induction for all members would need to be undertaken. <p>Actions from the last meeting</p> <p>Michelle gave an update on the fire concerns around a stand of pine trees proximity to homes at Blackmans Flat.</p> <ul style="list-style-type: none"> - EnergyAustralia have had discussions with the nearest neighbour about the pine trees near his land. The neighbour would prefer the trees to be maintained as they stand due to their visual amenity and ability to block dust, noise, and headlights from the coal haul road. The neighbour would prefer that EnergyAustralia did not access his land. <p><i>Julie noted strongly that the trees pose a high risk of fire for other houses in the area and that this issue still needs to be resolved.</i></p> <p>Michelle gave an update on EnergyAustralia's position on the Gardens of Stone Reservation Proposal.</p>	

Item	Discussion Point	Actions
	<ul style="list-style-type: none"> - EnergyAustralia acknowledges the commitment already made by the NSW Government and will watch the project progress with interest. <p><i>Julie asked if EnergyAustralia support the principle of the project.</i></p> <ul style="list-style-type: none"> - Michelle acknowledged that within the community there are a range of views on how the project has been announced and noted that EnergyAustralia hopes local stakeholders are engaged with the project moving forward. 	
3.	<p>Site safety</p> <p>Steve gave an overview of site safety.</p> <ul style="list-style-type: none"> - During July and August 2021, there were several minor yet preventable injuries. There has been a renewed focus on understanding, identifying and removing injury risk to finish the year as safely as possible. - Partly due to safety concerns caused by COVID, EnergyAustralia delayed the 1 September 2021 outage until the first week of September 2022. 	
4.	<p>Water management update</p> <p>Steve gave an overview of water management.</p> <ul style="list-style-type: none"> - Oberon Dam is at 100% capacity. The Oberon Dam has not been full for many years which indicates the significant amount of rainfall recently received in the local area. - Total active storage is at 97.2% capacity <ul style="list-style-type: none"> - Lake Lyell is at 100% and spilling - Lake Wallace is at 113% - Thompsons Creek Dam is at 93.1%. Thompsons Creek Dam receives some water from the treatment plant and the majority is pumped up from Lake Lyell. - There are no blue green algae alerts in the catchment. 	
5.	<p>Market update</p> <p>Steve gave an overview of the market update.</p> <ul style="list-style-type: none"> - No notes were taken due to commercial sensitivity. 	
6.	<p>Operations site update</p> <p>Steve gave an overview of the operations update</p> <p>Fuel supply</p> <ul style="list-style-type: none"> - There have been periods of solid mining activity at Springvale, interspersed with difficulties due to underground lithology. - Some of the coal received since the last meeting has come in via rail from other Centennial sources.. <p><i>Julie asked where the coal was received from.</i></p> <ul style="list-style-type: none"> - Steve noted some coal was received from Airly. There are also other potential local sources including Clarence. - Piper 1 is operating at full capacity readily. There has been a period of low generation due to market conditions. 	

Item	Discussion Point	Actions
	<p>Piper 2 is operating at 700 megawatts. As the outage was delayed, a smaller, opportunity outage was held to carry out some integrity work with a smaller workforce.</p>	
	<p>Water treatment plant</p>	
	<ul style="list-style-type: none"> - There have been a number of outages at the water treatment facility since the last meeting, but it has been operational since July. 	
	<p>Outages have typically occurred over a couple of days. There was recently a weeklong outage for maintenance including membrane replacement. Michelle gave an overview of the Dam Safety Emergency Exercise.</p>	
	<ul style="list-style-type: none"> - On 29 October 2021, a significant multi-agency desktop exercise was completed. 	
	<ul style="list-style-type: none"> - The exercise explored three scenarios, from minor to medium to catastrophic, testing EnergyAustralia's thinking and processes for reacting to dam safety threats. 	
	<ul style="list-style-type: none"> - The exercise was focused on earthquake, severe flooding and dam embankment failure of Thompsons Creek Dam and Lake Lyell Dam. Lake Wallace is no longer considered as it is now under BetterGrow's remit. 	
	<ul style="list-style-type: none"> - The exercise went well with some learnings that will be documented in the final report. 	
	<ul style="list-style-type: none"> - Recommendations will come out of the final report which EnergyAustralia will implement via work orders to make sure those corrections are put through into plans for subsequent funding and work that needs to be done. 	
	<p>Dam Seepage mapping of Thompsons Creek Dam and Lake Lyell</p>	
	<ul style="list-style-type: none"> - Seepage mapping is included as part of dam safety risk assessments. 	
	<ul style="list-style-type: none"> - Hydroterra are the contractor assisting EnergyAustralia with the Willowstick method. 	
	<ul style="list-style-type: none"> - The Dam Safety Risk Assessment concluded that the integrity of both dams has not been compromised. 	
	<p>Steve gave an overview of the Willowstick method.</p>	
	<ul style="list-style-type: none"> - See slide 15 for an overview of the Willowstick method 	<p>EnergyAustralia to present more information on the Willowstick method and present it at the next CCC meeting.</p>
	<ul style="list-style-type: none"> - An electronic potential is established between two locations (one being the dam and the other a location downstream from the dam). 	
	<ul style="list-style-type: none"> - Variations in the conductive field can show where seepage flows are occurring and the degree of saturation. 	
	<ul style="list-style-type: none"> - All dams have water passing through them to a minor degree. 	
	<ul style="list-style-type: none"> - The dam safety exercise allowed EnergyAustralia to test and refine action plans needed for each scenario. 	
	<p>Jim asked what classification the dam is: 1,2 or 3?</p>	
	<p>TAKEN ON NOTICE</p>	
	<p>Julie asked if there would be follow up testing for seepage 6 or 12 months after an event such as an earthquake.</p>	
	<ul style="list-style-type: none"> - Steve confirmed that there is ongoing monitoring of seepage on the dams. Aurecon are employed as the dam safety experts who are at 	<p>EnergyAustralia to confirm the classification of the dam.</p>

Item	Discussion Point	Actions
	<p>each of the dams 2 or 3 times per week doing seepage inspections etc to constantly monitor the dams.</p> <p><i>Julie asked how you measure what is happening underneath the dam and ensure there hasn't been movement or change?</i></p> <ul style="list-style-type: none"> - Steve noted that there are survey markers to indicate movement. The dams are fully surveyed a couple of times per year in addition to the checks by Aurecon a couple of times per week. - EnergyAustralia are fully compliant with all regulations. <p>ACTION- EnergyAustralia to provide further information on survey markers.</p> <p><i>Julie asked what depth the Willowsticks measure to.</i></p> <p>TAKEN ON NOTICE</p>	<p>EnergyAustralia to provide further information on survey markers.</p>
7.	<p>Lamberts North Ash Placement project</p> <p>Steve gave an overview of the Lamberts North Ash Placement project</p> <ul style="list-style-type: none"> - Brine Conditioned Ash to Mount Piper area 1 <ul style="list-style-type: none"> - July – October 2021: 68,144.20 tonnes. - The area 1 Brine Conditioned Ash Pad will be filled to capacity by mid-2022. - Brine will need to be placed in Lamberts North. - The Lamberts North site will be lined with a membrane lining with drainage above and below the liner, to avoid some of the issues with legacy brine in ash placement. The treatment is to catch any water that passes through the Brine Conditioned Ash. <p><i>Julie asked if the lining covers the entire Lamberts North site.</i></p> <ul style="list-style-type: none"> - Steve noted that Lamberts North has had water conditioned ash put in it and EnergyAustralia will be putting a liner over the water conditioned ash and all brine conditioned ash will be placed above the liner. - There are some areas of Lamberts North where there will not be a liner as only water conditioned ash will be placed there. <p>The Chair asked what the liner will be made of.</p> <ul style="list-style-type: none"> - Steve noted the liner is designed in accordance with landfill standards where you need to capture leachate and reduce it flowing elsewhere. <p>ACTION: EnergyAustralia to determine the thickness of the liner.</p> <p><i>Julie asked how EnergyAustralia will know if the liner is still intact after the ash has been placed on top of it.</i></p> <ul style="list-style-type: none"> - Steve noted that there has been a lot of work done with potential subsidence in the area as well as landfill design. The Standards accept that there is possibility of some minor perforations in the liner which should be collected by the sub-surface drainage. Addendum: Energy Australia have noted that should this occur, the level of seepage will be orders of magnitude less than would be the case if there was no liner. - Water Conditioned Ash to repositories 	<p>EnergyAustralia to determine the thickness of the liner.</p>

Item	Discussion Point	Actions
	<ul style="list-style-type: none"> - July – October 2021: 103, 178.80 tonnes - No complaints have been received. - No environmental incidents have been recorded in the past quarter. 	
8.	<p>Pine Dale and Enhance Place</p> <p>Steve gave an update on Pine Dale and Enhance Place.</p> <ul style="list-style-type: none"> - There have been no non-compliances at the Pine Dale Mine. - No community complaints have been recorded for Pine Dale or Enhance Place. - Monthly reports under the Environmental Protection License have been uploaded to EnergyAustralia’s website. - Site rehabilitation surveys were completed in November 2021. - The mines continue to be in care and maintenance and future mining activities continue to be monitored and evaluated. <p><i>Julie asked if there is a timeline that EnergyAustralia is exploring to possibly put in a Development Application to commence an open cut operation.</i></p> <ul style="list-style-type: none"> - Steve responded that as noted previously, EnergyAustralia is not exploring that option nor is any change being anticipated. That said, it remains there as a potential coal source and if needed would be subject to usual planning processes. 	
9.	<p>Community update</p> <p>Michelle gave a community update</p> <ul style="list-style-type: none"> - EnergyAustralia is currently undertaking a perception survey which is conducted every 2 years over the phone. - The Sponsorship Program is being reviewed and will be conducted in early 2022. No changes are expected regarding the grant funding that occurs twice per year. There could be changes about who funding is allocated to with the remainder of the budget and if there will be changes in the criteria for selection of those who receive sponsorship. - EnergyAustralia supported the Portland RSL on Remembrance Day which was advertised in the local newspaper. - EnergyAustralia attended the opening of the local Maiyingu Marragu walking trail which Michelle noted was a really great day. - Steve noted that EnergyAustralia have supported three people from their workforce to take community leave and assist in the installation of air conditioning at the native plant nursery associated with LEG. <p>ACTION: EnergyAustralia to provide Julie with a description of this scheme as she was unaware it was part of their community leave offered by EnergyAustralia.</p> <p><i>Julie commented that they did a great job, and it looks wonderful. She thanked EnergyAustralia for the work completed at the nursery.</i></p> <p>Cultural Keeping Place update</p> <ul style="list-style-type: none"> - See slide 22 for images of the Cultural Keeping Place in the Energy Expo. - All artefacts will soon be documented and registered to go on show in the Energy Expo. <p>2022 Apprentice update</p> <ul style="list-style-type: none"> - EnergyAustralia is providing 3 apprentice opportunities, 2 Mechanical and 1 Electrical. - 38 applications were received, 8 applicants identified as Aboriginal or Torres Strait Islander which is an increase on previous years. It was noted the total number of applications is decreasing every year. 	<p>EnergyAustralia to provide Julie with a description of their work because she was unaware it was part of their community leave offered by EnergyAustralia.</p>

Item	Discussion Point	Actions
	<ul style="list-style-type: none"> - 17 applicants were selected for Aptitude testing, 4 applicants did not show up for the testing. - 7 applicants were interviewed for positions. - The selection panel noted that there was a general lack of work experience from the applicants, potentially due to COVID. - The panel is seeing a decline in the applicants having an awareness of what they are interested in for career opportunities. There was a lack of interests and hobbies presented during the interviews. - Few applicants had researched EnergyAustralia before their interviews. <p><i>Julie noted that one part of the application should be to research the company before applying.</i></p> <ul style="list-style-type: none"> - Michelle noted that COVID has caused a lack of confidence for students. <p><i>Jim noted that students spend a lot of time on their phones, hence struggle to connect in face to face interviews.</i></p> <ul style="list-style-type: none"> - Michelle noted that there could be some work for EnergyAustralia to support the local schools preparing students for job interviews. <p><i>Julie asked if EnergyAustralia has any information available about what EnergyAustralia is seeking in potential apprentices.</i></p> <ul style="list-style-type: none"> - Michelle noted they have a lot of information available. <p><i>Lauren noted that often when you advertise a position you need to let them know what criteria they need to meet. She noted that the students have been learning from home with very little face to face contact.</i></p> <p><i>Jim noted that students need to know what is involved in different positions.</i></p>	<p>EnergyAustralia to make the information about how to interview well and what they are looking for in apprentices available on the EnergyAustralia website.</p>
10.	<p>Demolition of Wallerawang Stacks</p> <p><i>Julie noted that the demolition seemed surreal, and they did a great job.</i></p> <ul style="list-style-type: none"> - See below link to watch the Wallerawang Station demolished: - https://www.youtube.com/watch?v=DKfq01QgZTg - Fast forward to 2.52 in the video 	
11.	<p>Energy Recovery Statement</p> <p>Steve gave an update on Energy Recovery</p> <ul style="list-style-type: none"> - EnergyAustralia has withdrawn from the joint venture with ReGroup in pursuing the Energy Recovery project at Mount Piper. - The decision was made due to the project's technical and economic merits. EnergyAustralia realised there were a lot of people in Lithgow who were in support of the project, whilst there were also a lot of people who were against the project. - EnergyAustralia thanks all the stakeholders and community members who listened and considered and gave valuable feedback. - The feedback from the community helped improve the project with some improvements identified for the plant as a result of community engagement. - ReGroup is currently considering various options and if an alternate project is identified, they will engage again with the community - It is not an active project in any way in terms of the CCC. <p><i>Julie asked if EnergyAustralia is still involved if ReGroup's project remains on EnergyAustralia's land at Mount Piper.</i></p> <ul style="list-style-type: none"> - Steve confirmed the project will not be happening at all at Mount Piper. EnergyAustralia has no further involvement in Energy Recovery project. 	

Item	Discussion Point	Actions
	<p><i>Julie asked where the area is that the Government are considering for the Special Precincts.</i></p> <ul style="list-style-type: none"> - Michelle responded that the area is Western Lithgow. - Steve noted that a number of stakeholders, including EnergyAustralia are unaware of the location of the Special Precincts that were published. 	
12.	<p>Lake Lyell Pumped Hydro Energy Storage</p> <p>Steve gave an overview of the Lake Lyell Pumped Hydro Energy Storage</p> <ul style="list-style-type: none"> - NSW Government has advised that successful grant applications will be notified by the end of December 2021. - EnergyAustralia has applied for funding and the project team continue to focus on implementing the program of critical path activities to be ready to mobilise in the first Quarter of 2022. - At this stage, all activities are on track as planned. - EnergyAustralia organised recent letterbox drops to keep the community informed which triggered negative articles in the local Mercury newspaper from concerned residents. - The concerned residents have formed a group called No Hydro for Lake Lyell. - Community members have been invited to an information session on 8 December 2021 at the local Bowling Club. - It was noted that public comments have a significant sway on projects. <p>The Chair asked what the nature is of the community concern.</p> <ul style="list-style-type: none"> - Steve noted they are mainly focussed on visual impacts. <p><i>Julie noted that the visual impacts could be worked around.</i></p> <p>The Chair called for general business.</p> <p><i>Jamie asked if the Unloaders Project is still on hold.</i></p> <ul style="list-style-type: none"> - Michelle noted that her understanding is that it is not going ahead. - The rail unloader was heavily contingent on the NSW Government redoing the Mudgee Kandos line, which is unlikely to occur. - Centennial have put in an application for Angus Place West which will be a bord and pillar conventional mine. - EnergyAustralia are still working with Centennial on diversification of supply. - The development behind Aldi supplied Mount Piper with reasonable coal qualities , and there may be other similar developments. <p><i>Julie noted these operations are short term and that the operation behind Aldi did not go down well with the neighbours. Julie noted her concern around a potential conflict between mining opportunities in Lithgow and eco-tourism opportunities.</i></p> <p><i>Jim asked how coal will be freighted in from Clarence as they do have rail infrastructure on and near their site.</i></p> <ul style="list-style-type: none"> - Steve noted there is already approval for limited quantities to be delivered by road. 	
13.	<p>Next steps</p> <ul style="list-style-type: none"> - The next meeting will allow for an update on the pumped hydro project following EnergyAustralia's consultation with the community. - In early 2022 the Chair will call all members to assess interest in remaining in the CCC. - An annual report of the CCC meetings during 2021 will distributed when finalised. <p><i>Julie asked if there is a requirement for attendance at meetings.</i></p>	

Item	Discussion Point	Actions
	<ul style="list-style-type: none">- The Chair confirmed there is but there have been exceptions due to COVID.- Council will need to reassess their representation once the results of the upcoming Council elections become known.- Meetings in 2022 will continue to be held on Mondays subject to Council's availability.- Next meeting is tentatively dated for 7 February 2022.- The meeting closed.	

EnergyAustralia Lithgow Region

Community Consultative Committee

6 December 2021

Steve Marshall – Acting Head of Mt Piper



EnergyAustralia
LIGHT THE WAY

Acknowledgement of Country

EnergyAustralia acknowledges the Wiradjuri people as the traditional custodians of the land on which we are meeting. We recognise and respect their connection to culture, land and unity.

Artwork done by Wurundjeri Traditional Owner, Mandy Nicholson



Agenda

1. Welcome and introductions
2. Review of Notes from Previous Meeting
3. Site Update from EnergyAustralia
4. Project Updates
5. General Discussion
6. Meeting Close



Welcome and Introductions

Review of Notes from Previous Meeting

Response to Questions/Actions

Pine Dale Mine - Pine Tree Update

We have been in discussions with the nearest neighbour, and he would prefer that the Pine trees not be removed due to visual amenity and the barrier provided by the trees for traffic headlights from the coal haul road and truck noise reduction.

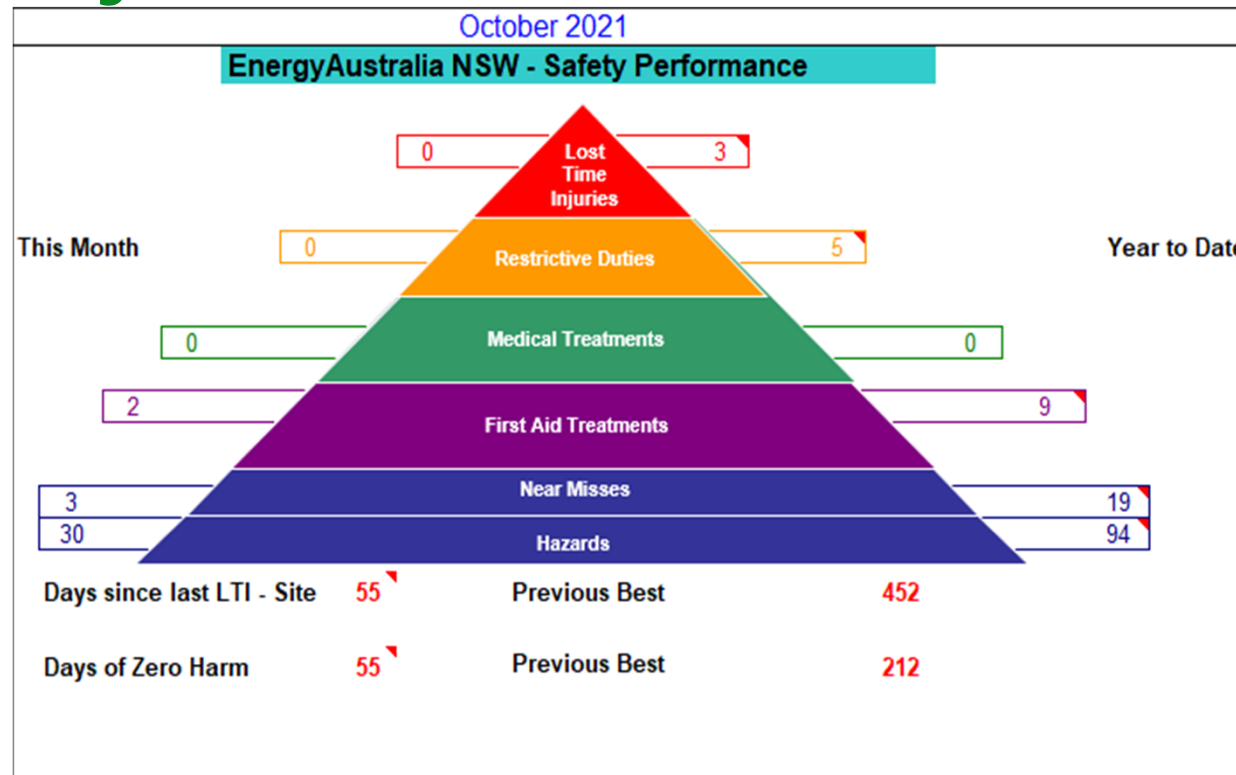
Will EnergyAustralia Support the Gardens of Stone Reservation Proposal?

EnergyAustralia acknowledges the commitment by the State Government, wishes the project team luck in their endeavours and hopes that local stakeholders are involved in their future plans.

Site Safety

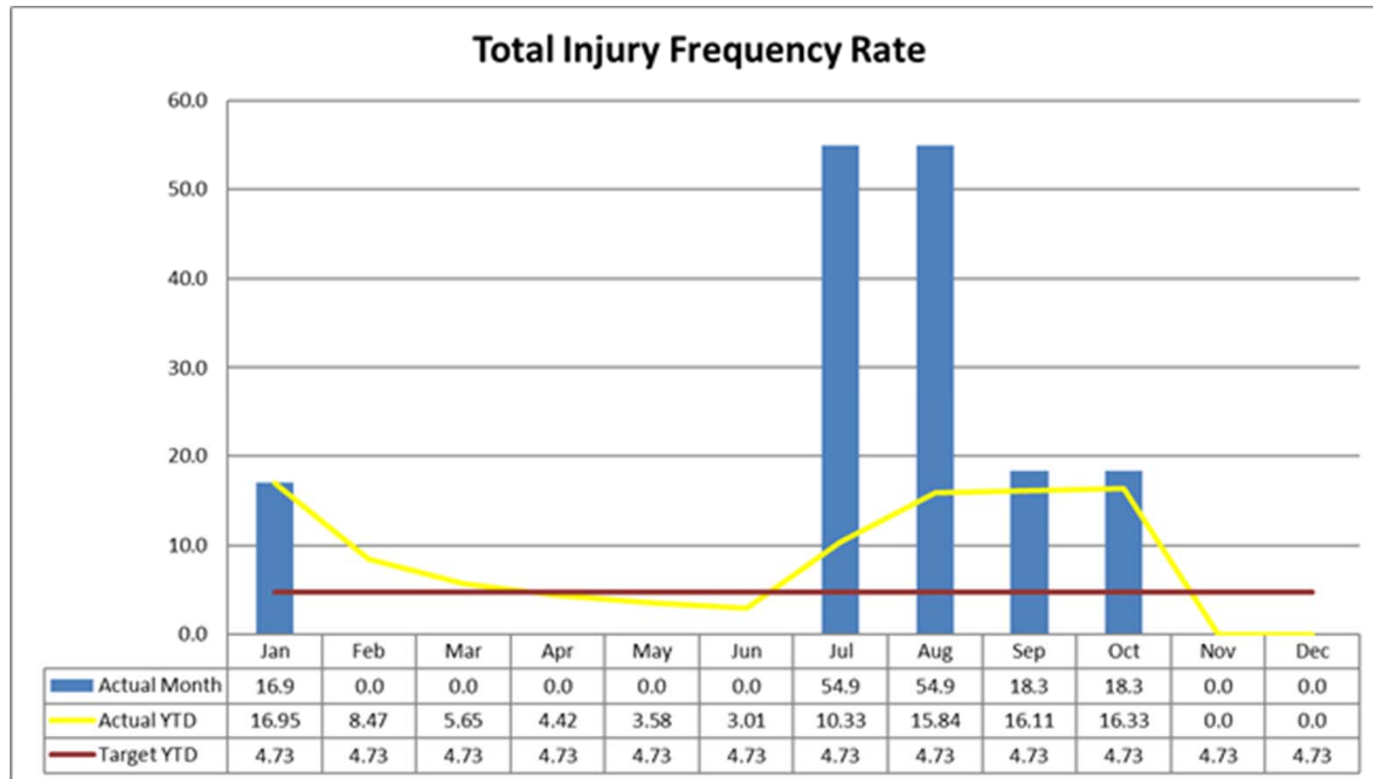


Site Safety – 2021



Site Safety -

YTD - TIFR
Actual = 16.33
Target = 4.73



Update

Water Management



Update on Water Management

- Oberon Dam level is at 100%
- Total Active Storage is at 97.2% with:
 - Lake Lyell at 100%
 - Lake Wallace at 113.0%
 - Thompsons Creek Dam at 93.1%
- Currently no Blue-green algae alerts in the catchment



Operations (Site) Update



Dam Safety Emergency Exercise

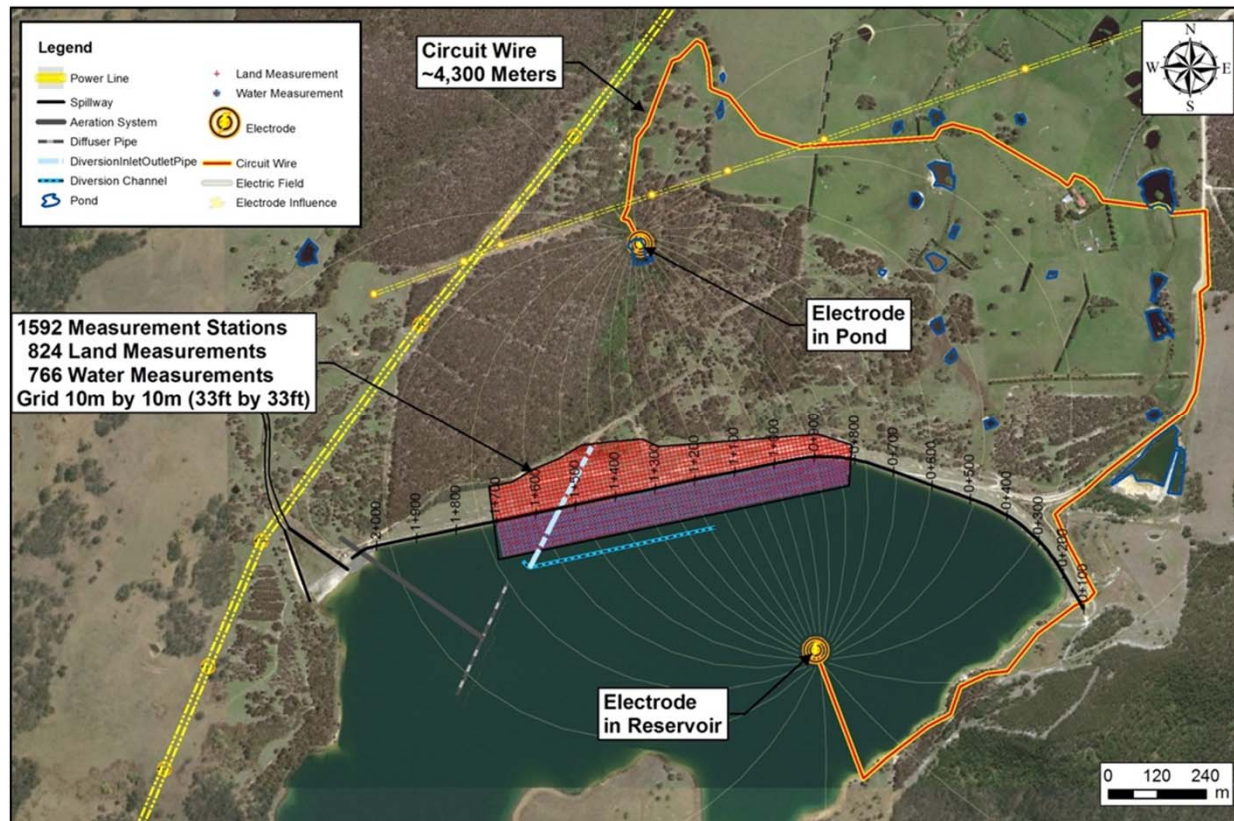
- Multi-agency Dam Safety Emergency Exercises are a requirement under the Dam Safety Regulations every 5 years.
- Held on 29 October and involved staff from EA, SES, Lithgow Council, LEMO, Aurecon, Macquarie Geotechnical, NSW Dams Safety and Police, who were an apology on the day.
- The exercise covered earthquake, severe flooding and dam embankment failure of Thompsons Creek & Lyell Dams to understand how well multi-agency emergency procedures responded to a dam emergency.
- The exercise went well, with some learnings identified, which will be implemented into our DSEP.

Dam Seepage Mapping – TCD & Lake Lyell

- Seepage mapping is being undertaken at Thompsons Creek and Lyell dams.
- Work was identified in Dam Safety Risk Assessment completed earlier this year.
- Hydroterra are doing work using Willowstick method (see over)
- The DSRA did not suggest dam integrity is compromised. The work allows engineers to better understand seepage pathways inside and under our dams



Willowstick Method - TCD



Update

**Lamberts North Ash Placement
Project**



Lamberts North Ash Placement Project Update

- Ash Placement Volume
- Brine Conditioned Ash to Mt Piper Area 1
 - July - October 2021 – 68,144.20 T
- Water Conditioned Ash to repositories
 - July – October 2021 – 103,178.80 T
- No complaints received
- No environmental incidents were recorded during the past quarter



Update

Pine Dale and Enhance Place



Pine Dale and Enhance Place Update

- No non compliances at the Pine Dale Mine
- No community complaints recorded for Enhance Place nor Pine Dale Mine
- Monthly reports as required under the Pine Dale EPL have been uploaded on to the EnergyAustralia website
- Annual site rehabilitation surveys were completed in November 2021
- Continues in care and maintenance
- future mining activities continue to be evaluated

Community Update

-
- The 2021 **Community Perception Survey** will be held November – December and is conducted every 2 years.
 - A review of our Sponsorship Program across the business will be conducted in early 2022 to ensure we best support the community
 - Supported Portland RSL on Remembrance Day – advertisement in local paper
 - Attended the opening of the walking trail at Maiyingu Marragu



Cultural Keeping Place Update

The Care Agreement for the long-term storage of the Aboriginal artifacts found at Pipers Flat has commenced. Consideration being given regarding residue testing on some of the items found to better understand their use and help tell the story of our indigenous past at Pipers Flat



Test Document



Apprentice Intake for 2022

- 3 Apprenticeship opportunities –2 Mechanical and 1 Electrical
- 38 Applications, 8 of whom identified as ATSI
- 17 selected for Aptitude Testing
- 7 Interviewed
- Number of applications is reducing each year
- Some points of note:
 - Lack of work experience – farm, previous roles
 - Demonstration of a passion for a trade or field in which to pursue a career
 - Few applicants had researched EnergyAustralia and know little about us
 - Display projects from school or hobbies to demonstrate interest and abilities.

Demolition of Wallerawang Stacks

[Wallerawang Power Station demolished: Watch the video \(9news.com.au\)](http://www.9news.com.au)

<https://www.youtube.com/watch?v=DKfq01QgZTg>

(fast forward to 2.52 in video)

Project Updates



Energy Recovery

Energy Recovery Statement

After careful consideration of the project's technical and economic merits, EnergyAustralia has decided to withdraw from the joint venture with ReGroup in pursuing the Energy Recovery project at Mt Piper.

Both EnergyAustralia and ReGroup would like to thank the many people in Lithgow, Wallerawang and Portland who were willing to listen to our proposal and engage with an open mind. The feedback and challenges from the community helped make the project better, and we genuinely appreciate the time the community spent considering this.

ReGroup is considering its options. If they do identify an alternate project, they remain committed to engage with the community to provide details.

Lake Lyell Pumped Hydro Energy Storage

What's Happening?

- The NSW Government has advised successful grant applicants will be notified by the end of December.
- The project team have continued to focus on implementing the program of critical path activities to be ready to mobilise in Q1 2022, all activities are on track at this stage.
- The project team have issued access request letters to Crown Lands, NPWS, Lithgow Council and to the two private landholders.
- Recent letterbox drops have triggered negative articles in the Lithgow Mercury from a group of concerned residents (No Hydro for Lake Lyell Group). All have been invited to community presentation on 8 December. Positive article planned in Village Voice. We will start to address issues raised in the article, and a Q&A is also planned for the project website.
- Arup have issued final access track designs and the ground investigation plan.

Thank you



EnergyAustralia
LIGHT THE WAY