

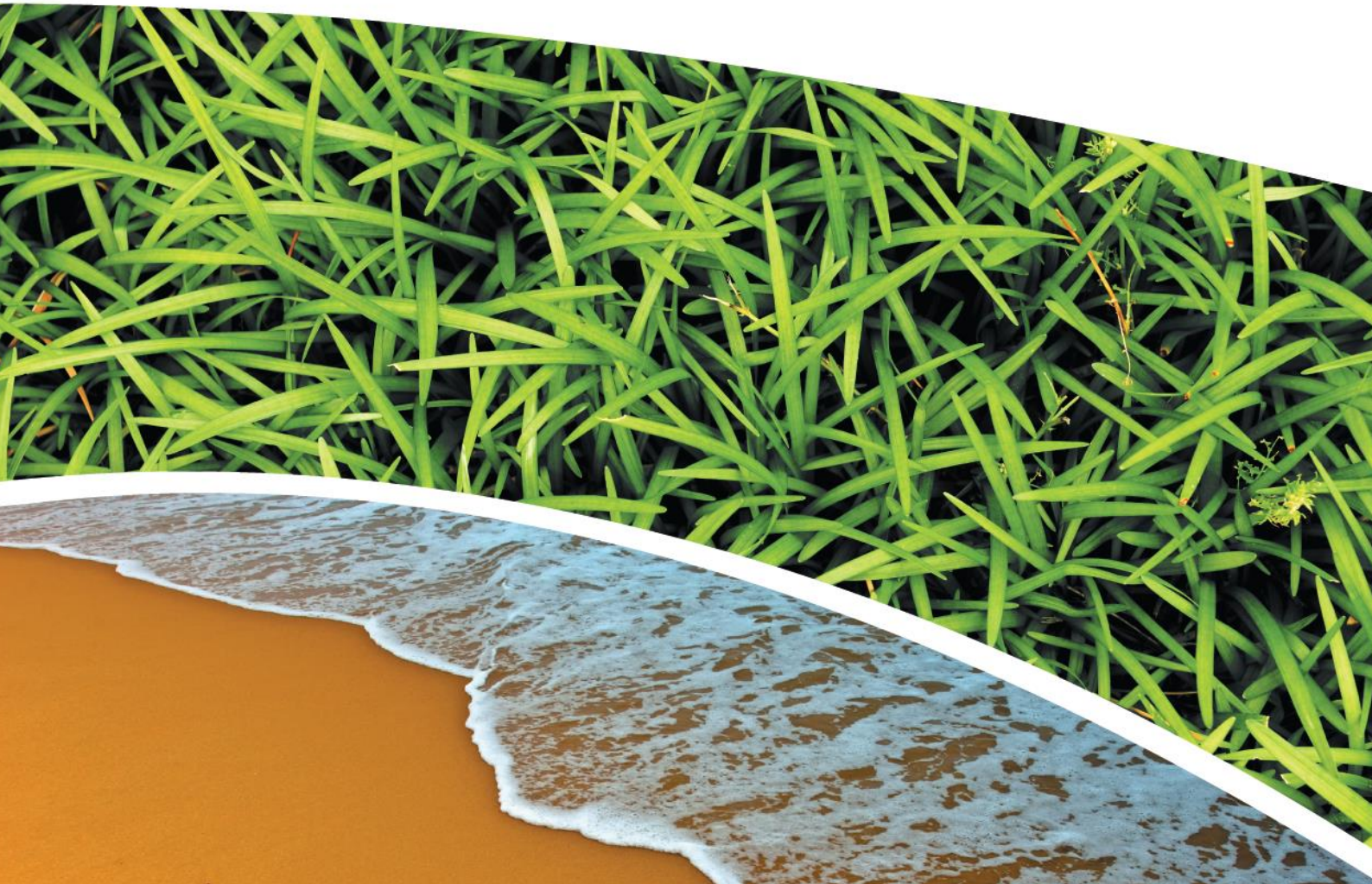
**SURFACE WATER, DEPOSITIONAL DUST,
HVAS AND METEOROLOGICAL MONITORING**

Prepared for Pine Dale Mine Community Consultative Committee

Prepared by RCA Australia

RCA ref 6880-1763/0


February 2018



RCA AUSTRALIA

ABN 53 063 515 711
92 Hill Street, CARRINGTON NSW 2294
Telephone: +61 2 4902 9200
Facsimile: +61 2 4902 9299
Email: administrator@rca.com.au
Internet: www.rca.com.au

This document is and shall remain the property of RCA Australia. The document may only be used for the purpose for which it was commissioned and in accordance with the Terms of Engagement for the commission supplied at the time of proposal. Unauthorised use of this document in any form whatsoever is prohibited.

DOCUMENT STATUS						
Rev No	Comment	Author	Reviewer	Approved for Issue (Project Manager)		
				Name	Signature	Date
/0	Final	C Rocher	D Mauldin	C Rocher		16.03.2018

DOCUMENT DISTRIBUTION				
Rev No	Copies	Format	Issued to	Date
/0	1	Electronic (email)	Pine Dale Mine – Graham Goodwin graham.goodwin@energyaustralia.com.au	16.03.2018
/0	1	Electronic (email)	Energy Australia- Mark Frewin mark.frewin@energyaustralia.com.au	16.03.2018
/0	1	Electronic (email)	Lithgow City Council – Andrew Muir andrew.muir@lithgow.nsw.gov.au	16.03.2018
/0	1	Electronic report	RCA – job archive	16.03.2018



RCA LE ref 6880-1763/0

16 March 2018

Pine Dale Mine
PO Box 202
WALLERAWANG NSW 2845

Attention Mr Graham Goodwin

**REPORT COMPILED FOR
PINE DALE MINE COMMUNITY CONSULTATIVE COMMITTEE
DETAILING SURFACE WATER, GROUNDWATER DEPOSITIONAL DUST,
HVAS AND METEOROLOGICAL MONITORING
FEBRUARY 2018**

1 GENERAL COMMENTS

Job Number: 6880.

Date Samples Received: During the month of February 2018.

Samples received were sampled by RCA Laboratories – Environmental staff.

This report satisfies the requirements to monitor environmental parameters as presented in the Pine Dale Mine Environmental Protection Licence (EPL 4911).

2 ANALYTICAL PROCEDURES

The analytical procedures used by RCA Laboratories – Environmental (NATA Accreditation number 9811) are based on established internationally recognised procedures such as APHA and Australian Standards. Analytical test methods are detailed in **Table 1**. ALS Environmental has been used to obtain analysis of anions, cations and dissolved metals (NATA Accreditation number 825).

Table 1 Analytical Test Methods

ANALYSIS	METHOD	UNITS	ANALYSING LABORATORY	NATA / NON-NATA
Determination of Suspended Particulate Matter	ENV-LAB003	µg/m ³	RCA Laboratories – Environmental	NATA Analysis
Determination of Particulate Matter – Deposited Matter	ENV-LAB004	g/m ² .month	RCA Laboratories – Environmental	NATA Analysis
pH	ENV-LAB006	pH	RCA Laboratories – Environmental	NATA Analysis
Conductivity	ENV-LAB010	µS/cm	RCA Laboratories – Environmental	NATA Analysis
Total Suspended Solids	ENV-LAB009	mg/L	RCA Laboratories – Environmental	NATA Analysis
Turbidity	ENV-LAB037	NTU	RCA Laboratories - Environmental	NATA Analysis
Oil and Grease	ENV-LAB022	mg/L	RCA Laboratories - Environmental	Non-NATA Analysis
Major Anions (Alkalinity, Cl, SO ₄)	ED037, ED041, ED045	mg/L	ALS	NATA Analysis
Major Cations (Ca, Mg, Na, K)	ED093	mg/L	ALS	NATA Analysis
Dissolved Metals	EG020F	mg/L	ALS	NATA Analysis

3 WATER MONITORING RESULTS

3.1 GROUNDWATER

A total of 2 on-site groundwater samples were collected during the month of February 2018. Water quality analysis results are shown in **Table 2**.

Table 2 Groundwater Analysis Results – Monthly Monitoring

ANALYSIS	UNITS	P6	P7
Sample Number	-	02186880011	02186880012
Date Sampled	-	12/02/18	12/02/18
Time Sampled	-	14:36	16:06
Depth to Water from Surface	m	25.15	6.91
Water Level (AHD)	m	891.80	887.49
Temperature	°C	19.0	17.8
pH	pH	6.07	6.64
Conductivity	µS/cm	1540	871
Turbidity	NTU	59	
Dissolved Oxygen	mg/L	<2	
TSS	mg/L	60	
Oil and Grease	mg/L	<5	
Bicarbonate Alkalinity (CaCO ₃)	mg/L	68	228
Total Alkalinity (CaCO ₃)	mg/L	68	228
Sulfate (as SO ₄)	mg/L	590	62
Chloride	mg/L	36	107
Calcium	mg/L	136	44
Magnesium	mg/L	62	47
Sodium	mg/L	57	50
Potassium	mg/L	20	7
Cobalt (dissolved)	mg/L	0.073	
Manganese (dissolved)	mg/L	2.76	
Nickel (dissolved)	mg/L	0.125	
Zinc (dissolved)	mg/L	0.056	
Iron (dissolved)	mg/L	30.7	<0.05
Trigger Levels*			
pH trigger level	pH	6.2 – 8.0	6.2 – 8.0
Conductivity trigger level	µS/cm	1201	852
Water Level (AHD) #	m	882.25	882.31

NOTES: *Depth relative to ground level (not standpipe height).

■ Indicates analysis was not required

Results shown in **italics** indicates exceedance of trigger level

* Trigger levels for the water monitoring parameters were revised in September 2017 and were submitted to the Department of Primary Industries Water (DPI Water). A response has not yet been provided to Enhance Place Pty Ltd. These revised trigger values are assumed to be accepted and are implemented into this report.

Groundwater monitoring locations are shown in **Appendix 1**.

3.2 EPA SURFACE WATER MONITORING

Routine quarterly surface water monitoring was undertaken during February 2018 at three surface water sites, EPA Points 2, 3 and 14. Water quality analysis results are shown in **Table 3**.

Table 3 EPA Surface Water Analysis Results

ANALYSIS	UNITS	EPA Point 2 Neubecks Ck Upstream	EPA Point 3 Neubecks Ck Downstream	EPA Point 14 Coxs River Downstream
Sample Number	-	02186880009	0218688004	02186880010
Date Sampled	-	12/02/2018	12/02/2018	12/02/2018
Time Sampled	-	14:27	12:13	10:52
Temperature	°C	20.5	23.3	22.7
pH	pH	6.76	6.94	8.70
Conductivity	µS/cm	1820	902	1350
Sulfate	NTU	668	326	44
Dissolved Iron	mg/L	0.15	0.73	<0.05
Total Suspended Solids	mg/L	9	<5	<5
Turbidity	mg/L	21	3	7
Trigger Levels**				
pH	pH	6.9 – 8.0	6.4 – 8.0	7.5 – 8.0
Conductivity	µS/cm	2398	2454	1207
Total Suspended Solids	mg/L	30	30	30

Results shown in **italics** indicates exceedance of trigger level

** In a review of the Pine Dale Coal Mine water trigger levels (approved by the NSW Department of Primary Industries and Environmental Protection Authority) trigger levels for pH, conductivity and total suspended solids have been developed for EPL Point 2, 3 & 14. However, these triggers are not stipulated as part of EPL 4911. These trigger levels have been revised in September 2017; however, and the revised trigger levels are presented in **Table 3**. These trigger levels are assumed to be accepted.

4 AIR QUALITY MONITORING RESULTS

4.1 HIGH VOLUME AIR SAMPLERS (HVAS)

HVAS at this facility conform to AS/NZS 3580.9.3:2015, AS/NZS 3580.9.6:2015 and AS/NZS 3580.1.1:2016.

The AS NZS 3580.9.6 stipulates that for one-in-six-day sampling sequences the sampling period shall be 24 ±1 hours. The TSP high volume air sampling unit ran for less than 24 ± 1 hours on 6 February and greater than 24 ± 1 hours on the 12 February. Therefore, these dates do not conform to the run time requirements detailed in AS/NZS 2580.9.6.

HVAS Total Suspended Particulate analysis results are shown in **Table 4**. PM₁₀ Suspended Particulate Matter results are shown in **Table 5**.

Table 4 Total Suspended Particulates ($\mu\text{g}/\text{m}^3$ 0°C 101.3 kPa)

RUN DATE	TSP ($\mu\text{g}/\text{m}^3$)	SAMPLE NUMBER	FILTER NUMBER	DATE FILTER OFF	TIME FILTER OFF	FIELD TECH	HOURS RUN
06-Feb-18	22	02186880031	9518515	11-Feb-18	11:45	Client	19.00
12-Feb-18	33	02186880033	9518517	13-Feb-18	10:10	Client	29.01
18-Feb-18	48	02186880035	9518519	19-Feb-18	16:00	Client	24.00
24-Feb-18	16	02186880037	9410493	26-Feb-18	9:05	Client	24.00

Table 5 Suspended Particulate Matter PM_{10} ($\mu\text{g}/\text{m}^3$ 0°C 101.3 kPa)

RUN DATE	PM_{10} ($\mu\text{g}/\text{m}^3$)	SAMPLE NUMBER	FILTER NUMBER	DATE FILTER OFF	TIME FILTER OFF	FIELD TECH	HOURS RUN
06-Feb-18	5	02186880032	9518516	11-Feb-18	11:50	Client	24.00
12-Feb-18	21	02186880034	9518518	13-Feb-18	10:15	Client	24.00
18-Feb-18	27	02186880036	9518520	19-Feb-18	16:03	Client	24.00
24-Feb-18	9	02186880038	9518521	26-Feb-18	9:15	Client	24.00

4.1.1 TSP Summary

The NSW EPA Annual Mean TSP allowable limit is $90\mu\text{g}/\text{m}^3$. All TSP HVAS results recorded during this monitoring period are in compliance with consent conditions, as the *current rolling annual mean* (from March 2017 to February 2018) for the TSP unit is $19.2\mu\text{g}/\text{m}^3$, which is well below the allowable limit of $90\mu\text{g}/\text{m}^3$.

4.1.2 PM_{10} Summary

The NSW EPA 24h Maximum PM_{10} allowable limit is $50\mu\text{g}/\text{m}^3$. The EPA Annual Mean PM_{10} allowable limit is $25\mu\text{g}/\text{m}^3$. All PM_{10} HVAS results recorded during this monitoring period conform to consent conditions, as the *current rolling annual mean* for the PM_{10} unit is $9.4\mu\text{g}/\text{m}^3$, which is below the allowable limit of $25\mu\text{g}/\text{m}^3$. The 24 hour maximum allowable limit of $50\mu\text{g}/\text{m}^3$ was not exceeded during the month of February 2018.

4.1.3 Comments

HVAS monitoring locations are shown in **Appendix 1**.

Graphical HVAS results presentations are shown in **Appendix 2**.

4.2 DEPOSITIONAL DUST

Depositional Dust Gauges at this facility conform to AS/NZS 3580.10.1:2016 and AS/NZS 3580.1.1:2016. Depositional Dust monitoring results are shown in **Table 6**.

Table 6 *Depositional Dust Monitoring - Deposited Matter – February 2018*

SAMPLE NUMBER	DEPOSIT GAUGE	DATE SAMPLE STARTED	DATE SAMPLE COMPLETED	NUMBER OF DAYS	NOTES	INSOLUBLE SOLIDS (g/m ² .month)	ASH (g/m ² .month)	COMBUSTIBLE MATTER (g/m ² .month)
02186880021	D1	11/01/2018	12/02/2018	32	IT	1.2	0.6	0.6
02186880022	D2	11/01/2018	12/02/2018	32	I	0.7	0.4	0.3
02186880023	D3	11/01/2018	12/02/2018	32	I	0.9	0.6	0.3
02186880024	D4	11/01/2018	12/02/2018	32	I	1.0	0.4	0.6
02186880025	D5	11/01/2018	12/02/2018	32	I	0.6	0.3	0.3
02186880026	D6	11/01/2018	12/02/2018	32	I	1.0	0.5	0.5

Glossary of Terms Used in Notes:

I Insects (eg, Ants, Spiders) IT Insects and tree litter

4.2.1 Allowable Depositional Dust Limits

The EPA Long Term (Annual Average) Dust Limit is 4g/m² per month. All Depositional Dust results during this monitoring period are in compliance with consent conditions. The Annual Average for Dust Gauges D1, D2, D3, D4, D5 and D6 are all less than or equal to 0.7g/m² per month, which is below the allowable Annual Average Long Term Limit of 4g/m² per month.

Depositional Dust monitoring locations are shown in **Appendix 1**. Graphical Depositional Dust results are shown in **Appendix 2**.

5 BLASTING RESULTS

No blasting was undertaken during this month as mining operations have ceased since the end of March 2014.

6 NOISE MONITORING RESULTS

Routine quarterly noise monitoring was not required to be undertaken during February 2018.

7 OPERATIONAL ACTIVITIES

All of the approved minable reserves at the Pine Dale Mine have now been exhausted. Operational mining and the last coal sales ceased as of the end of March 2014.

All former operators have been made redundant; however some statutory positions still remain. Pine Dale Mine has been placed in care and maintenance since April 2014.

8 SUMMARY

During the month of February 2018 environmental monitoring constituents were found to be generally in compliance with EPL 4911.

The pH was outside the trigger level range for groundwater bore P6, surface water monitoring Point 2 and Point 14. The electrical conductivity exceeded the site specific trigger level range at bore P6 and P7, and surface water monitoring Point 14.

Standing water levels at the site groundwater bores were compliant with their respective trigger levels.

Rolling annual averages from both the TSP and PM₁₀ High Volume Air Samplers are currently well below the EPA Annual Mean TSP and PM₁₀ criterion of 90µg/m³ and 25µg/m³ respectively.

Currently there are no depositional dust gauge results which are greater than the EPA Long Term (annual average) criteria of 4g/m².month based upon a rolling average of the past 12 months.

Pine Dale Mine ceased operation in March 2014 and therefore no blasting occurred at the site.

This report must not be reproduced except in full. Results or figures from this report must not be used without acknowledgment.

Please contact the undersigned if you have any queries.

Yours sincerely



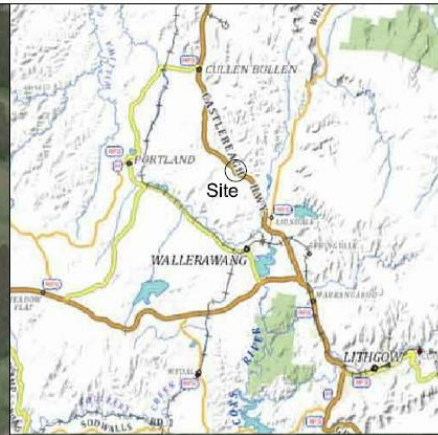
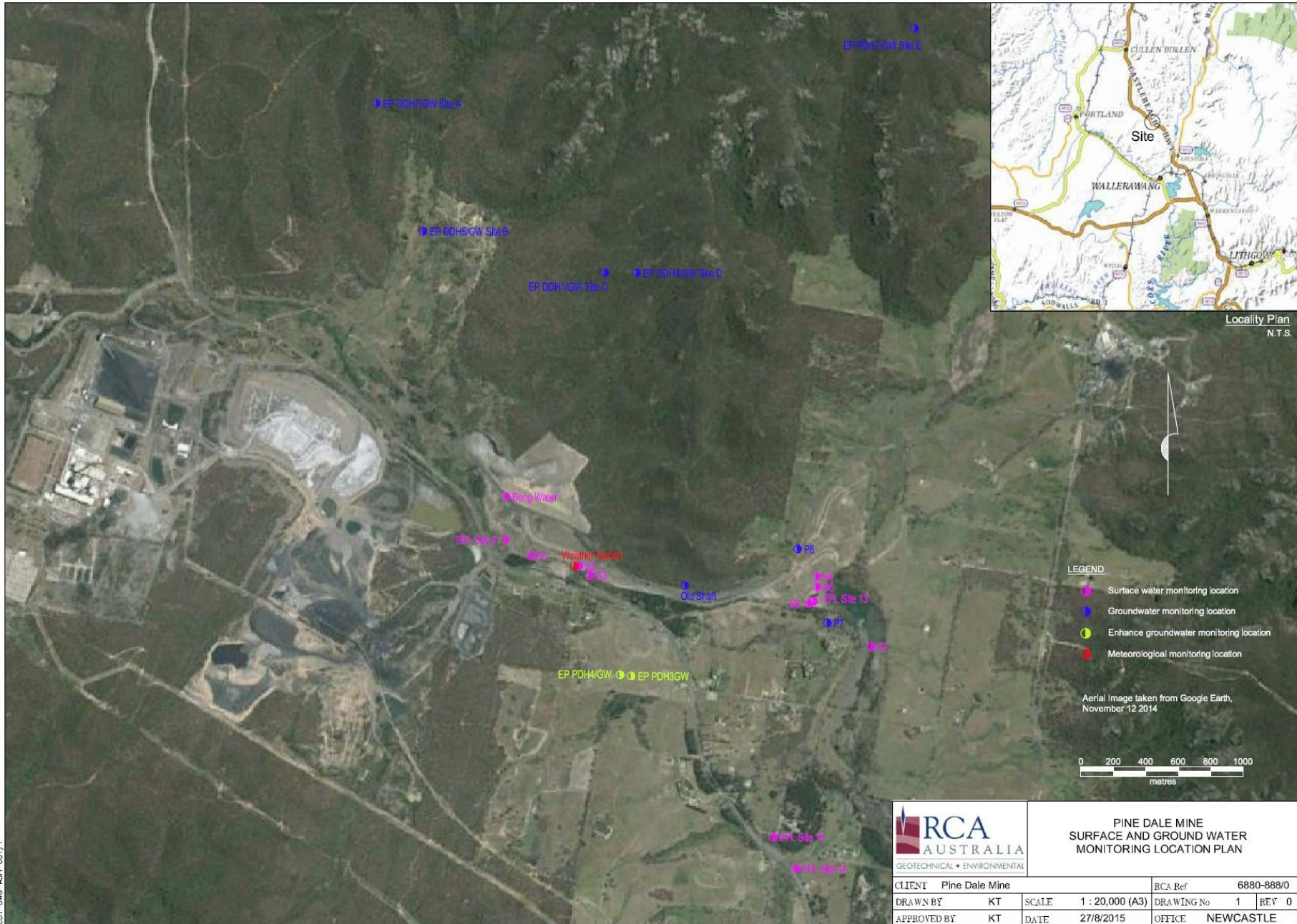
Katy Shaw
Environmental Scientist
RCA Australia Pty Ltd



Carmen Rocher
Environmental Engineer
RCA Australia Pty Ltd

Appendix 1

Surface Water Groundwater and Air Quality
Monitoring Locations



Locality Plan
N.T.S.

- LEGEND**
- Surface water monitoring location
 - Groundwater monitoring location
 - Enhance groundwater monitoring location
 - Meteorological monitoring location

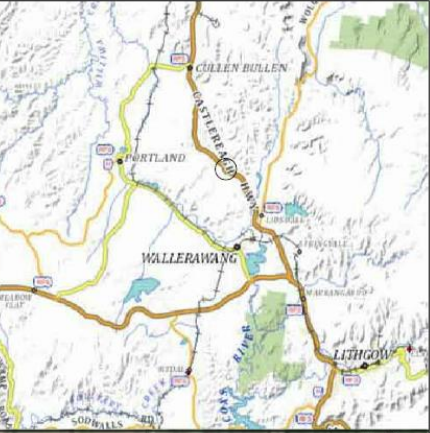
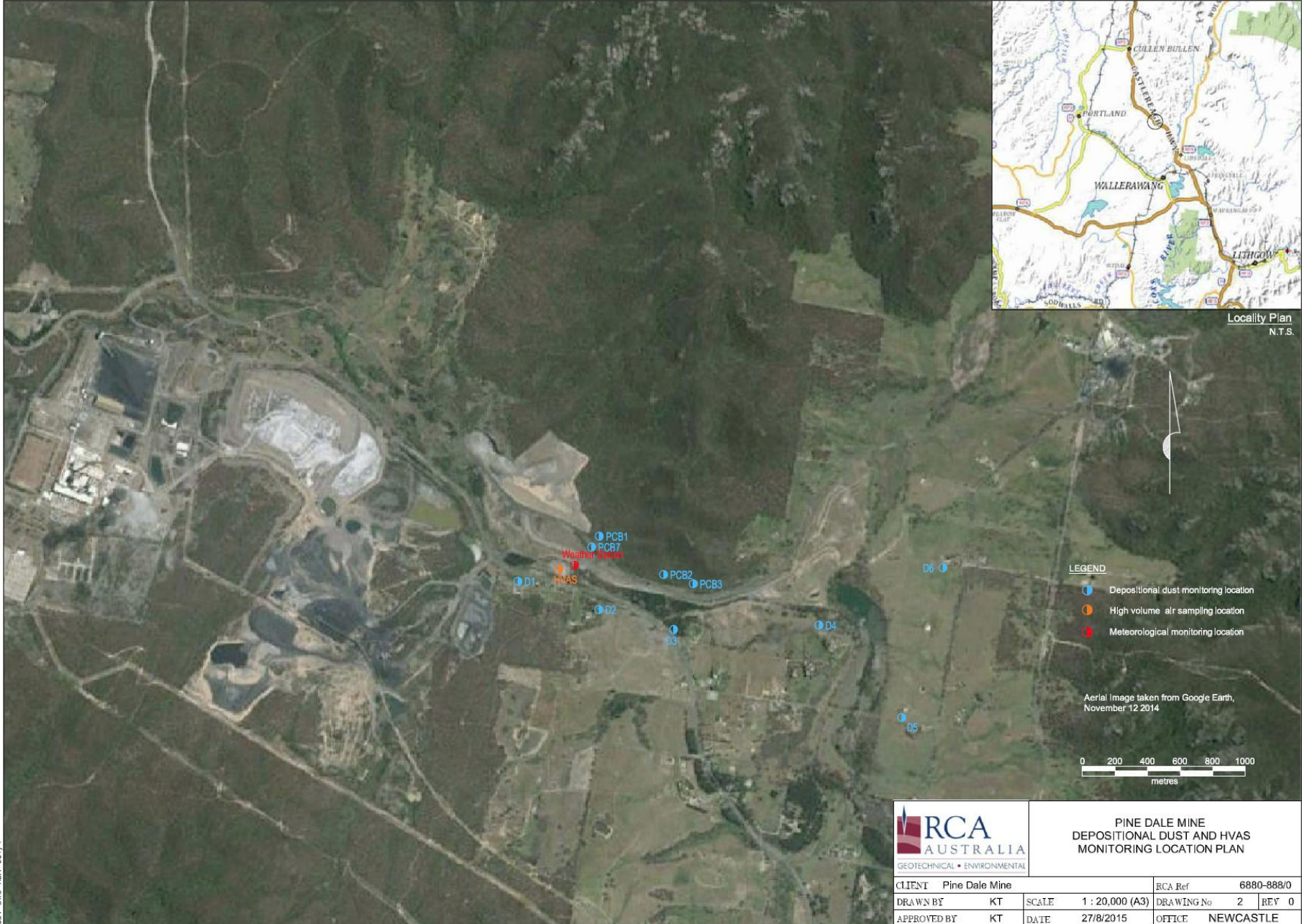
Aerial Image taken from Google Earth,
November 12 2014



**PINE DALE MINE
SURFACE AND GROUND WATER
MONITORING LOCATION PLAN**

CLIENT	Pine Dale Mine	RCA Ref	6880-888/0
DRAWN BY	KT	SCALE	1 : 20,000 (A3)
APPROVED BY	KT	DATE	27/8/2015
		DRAWING No	1
		REV	0
		OFFICE	NEWCASTLE

6880-888/0-1



Locality Plan
N.T.S.

- LEGEND**
- Depositional dust monitoring location
 - High volume air sampling location
 - Meteorological monitoring location

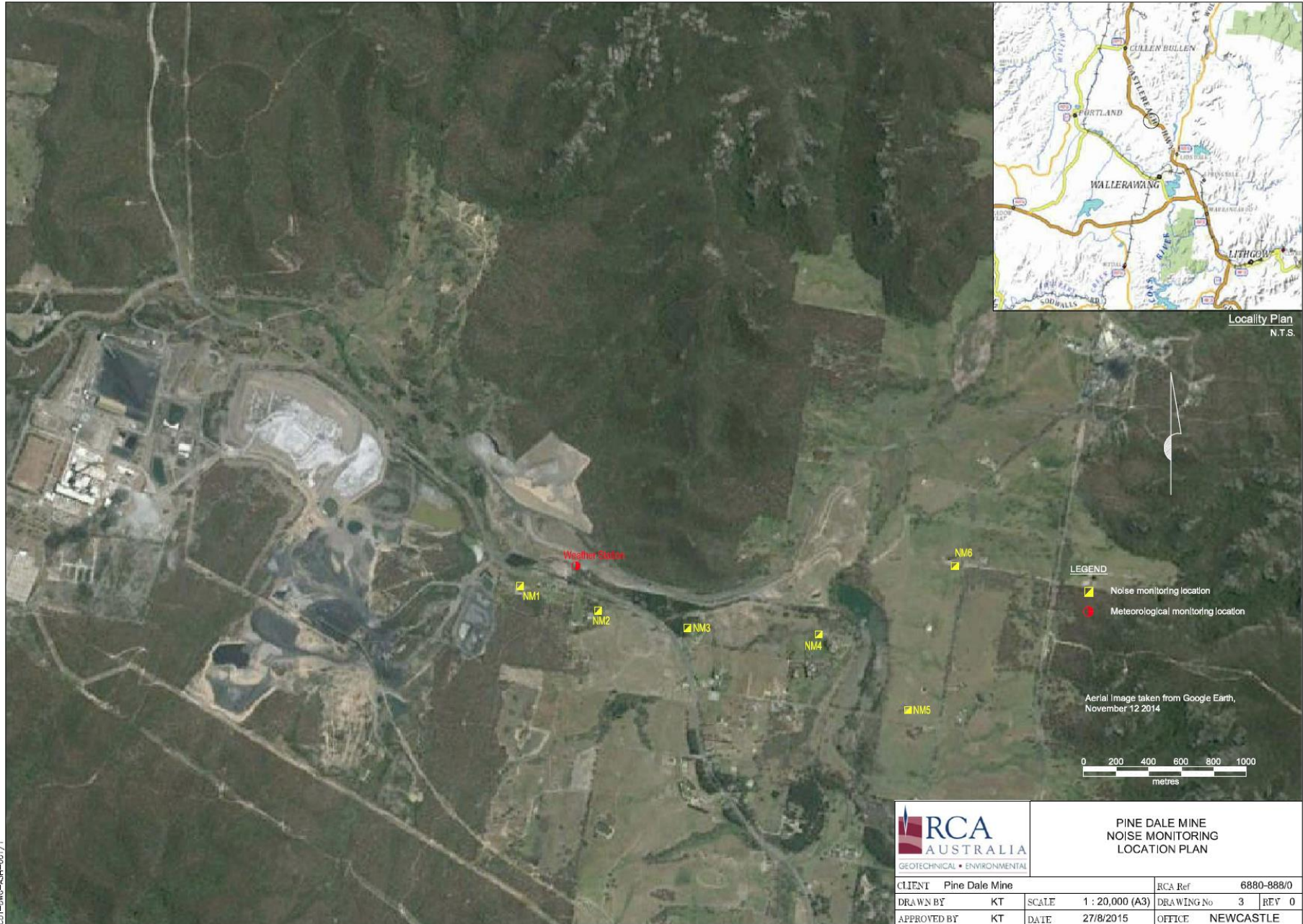
Aerial Image taken from Google Earth,
November 12 2014



**PINE DALE MINE
DEPOSITIONAL DUST AND HVAS
MONITORING LOCATION PLAN**

CLIENT	Pine Dale Mine	RCA Ref	6880-888/0
DRAWN BY	KT	SCALE	1 : 20,000 (A3)
APPROVED BY	KT	DATE	27/8/2015
		DRAWING No	2
		OFFICE	NEWCASTLE
		REV	0

COT-DWC-ASH-001/1

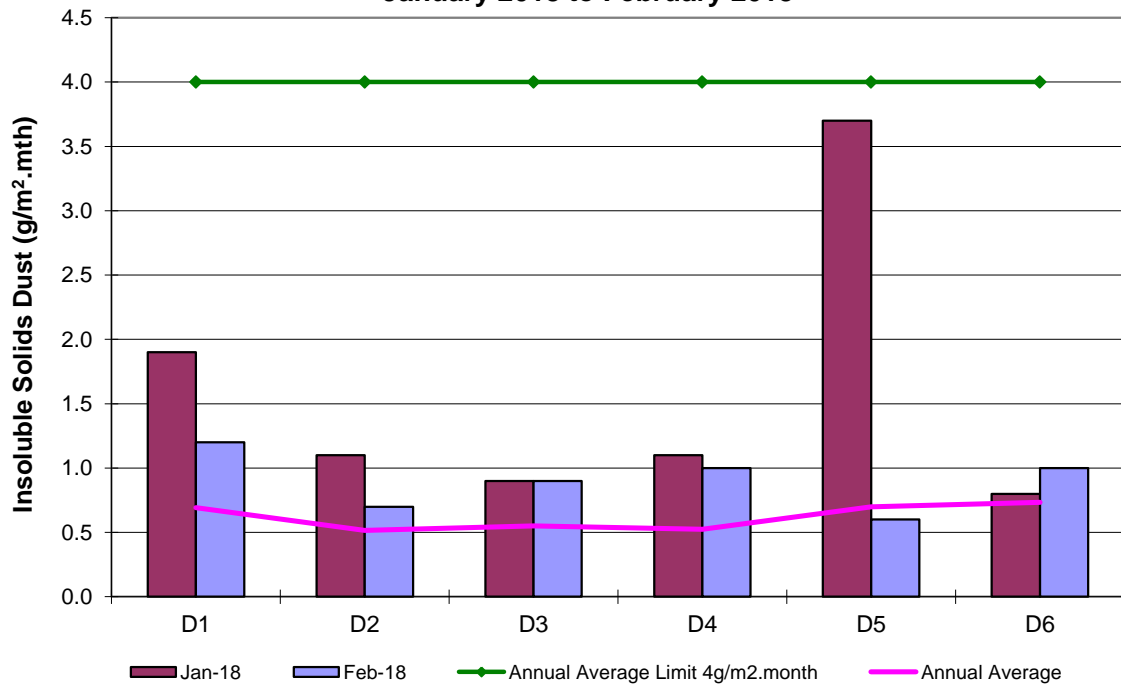


01/11/2015 10:51:17 AM

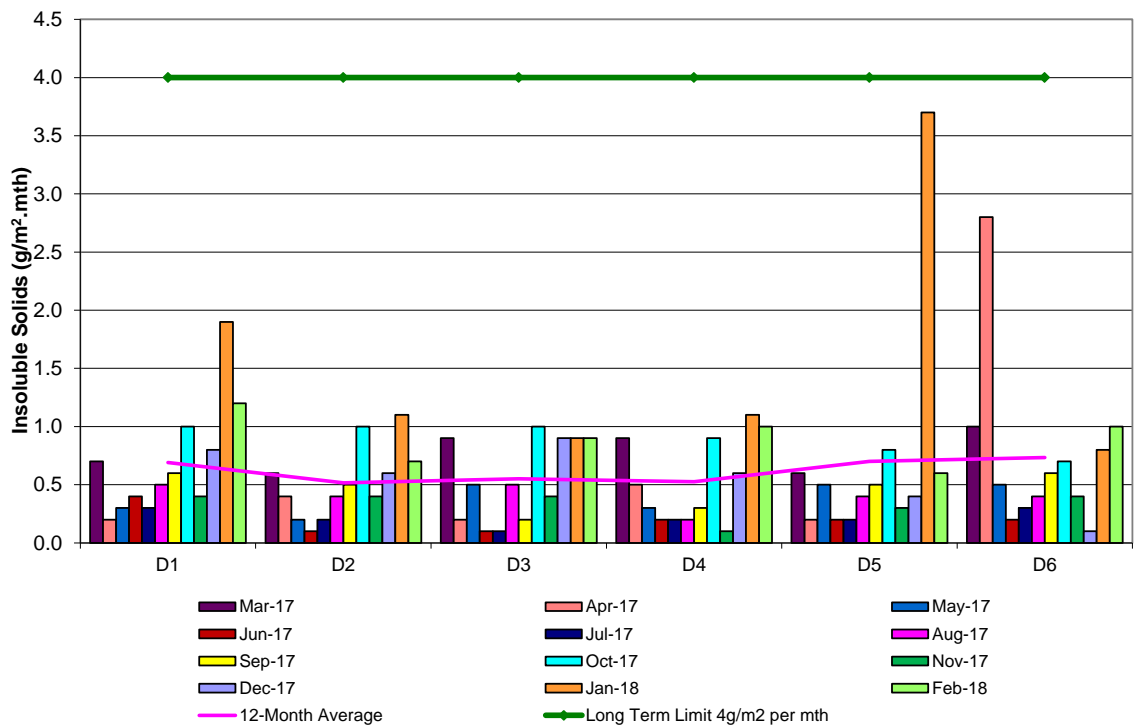
Appendix 2

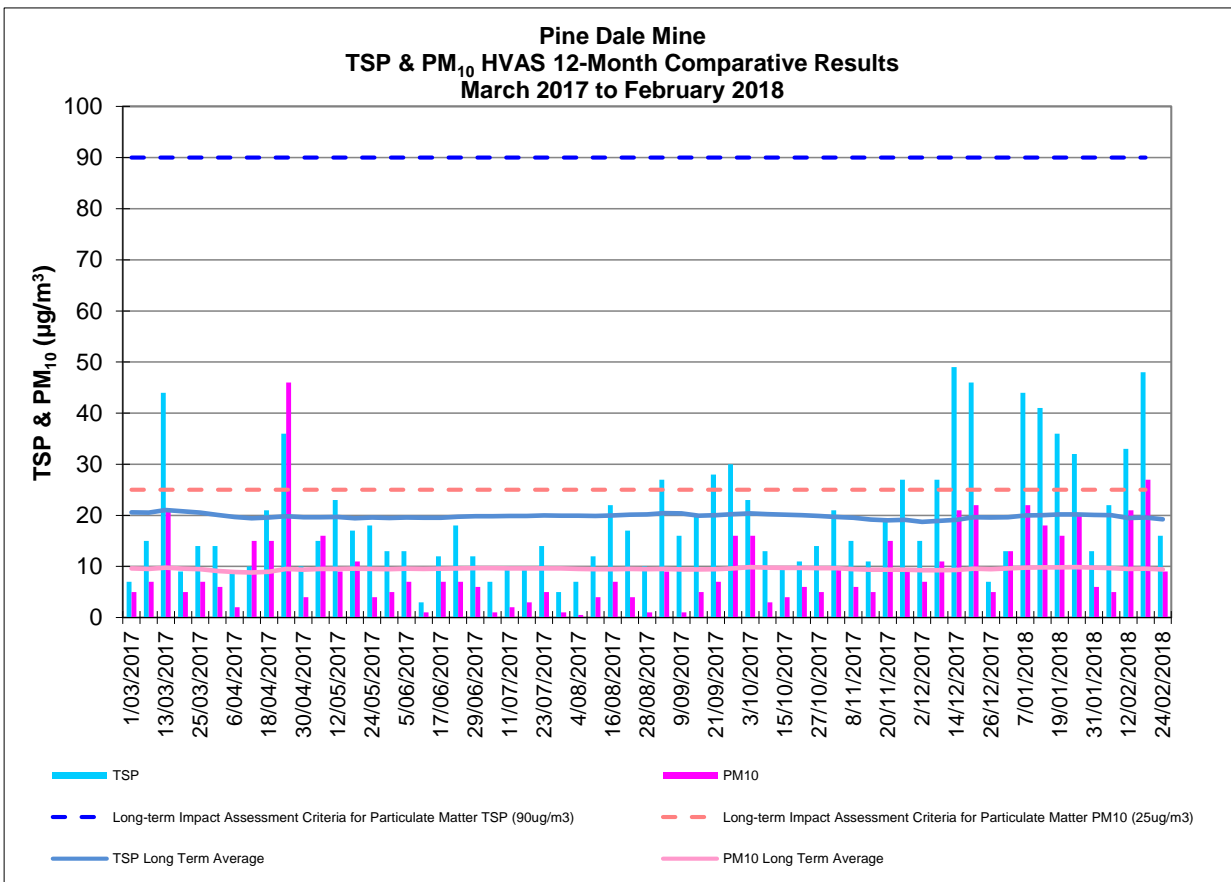
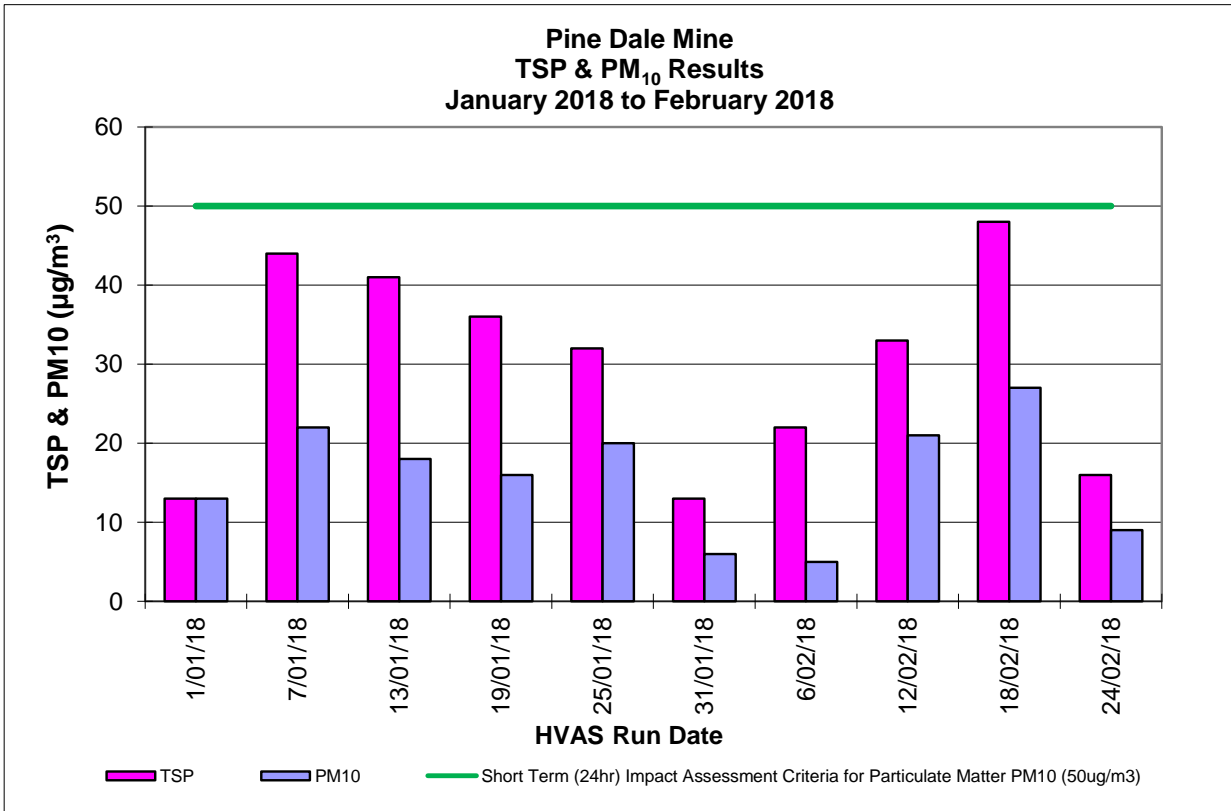
Depositional Dust and HVAS Graphs

**Pine Dale Mine
Depositional Dust Gauge Comparative Results
January 2018 to February 2018**



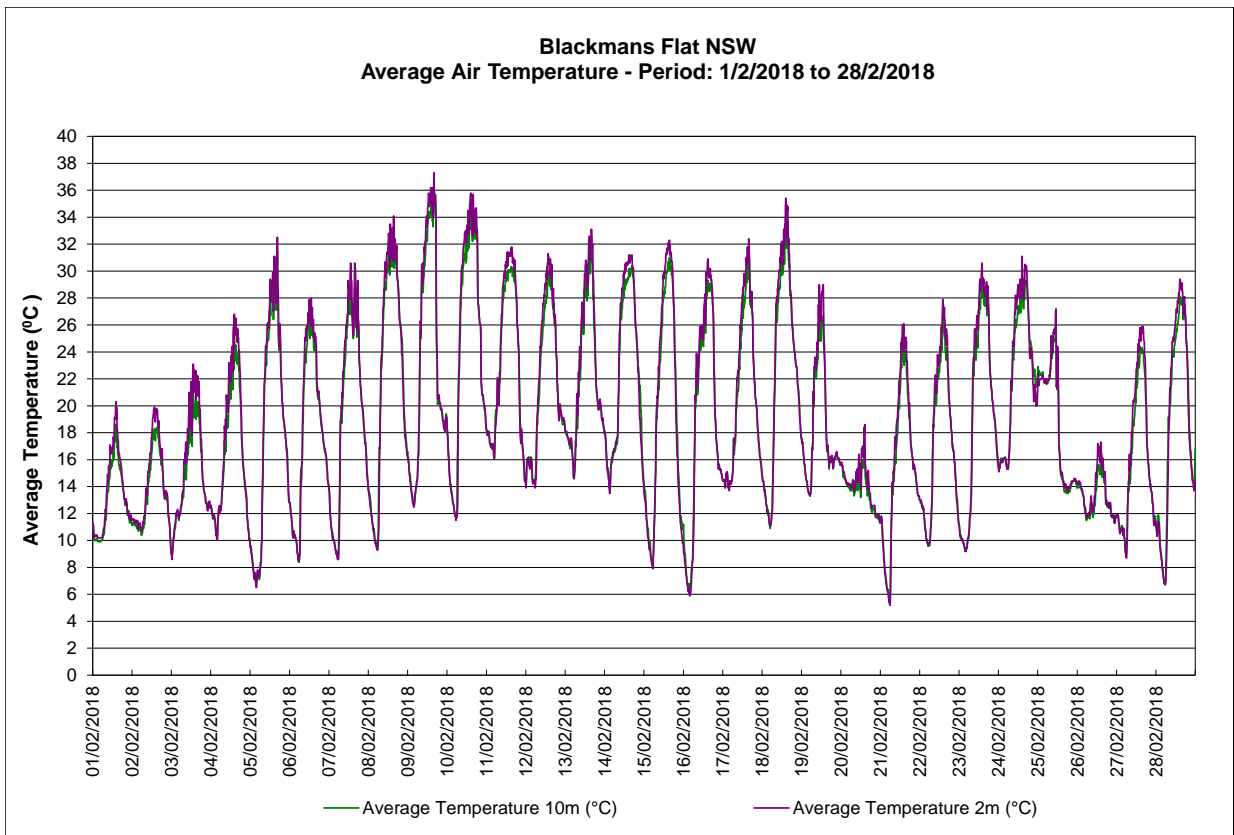
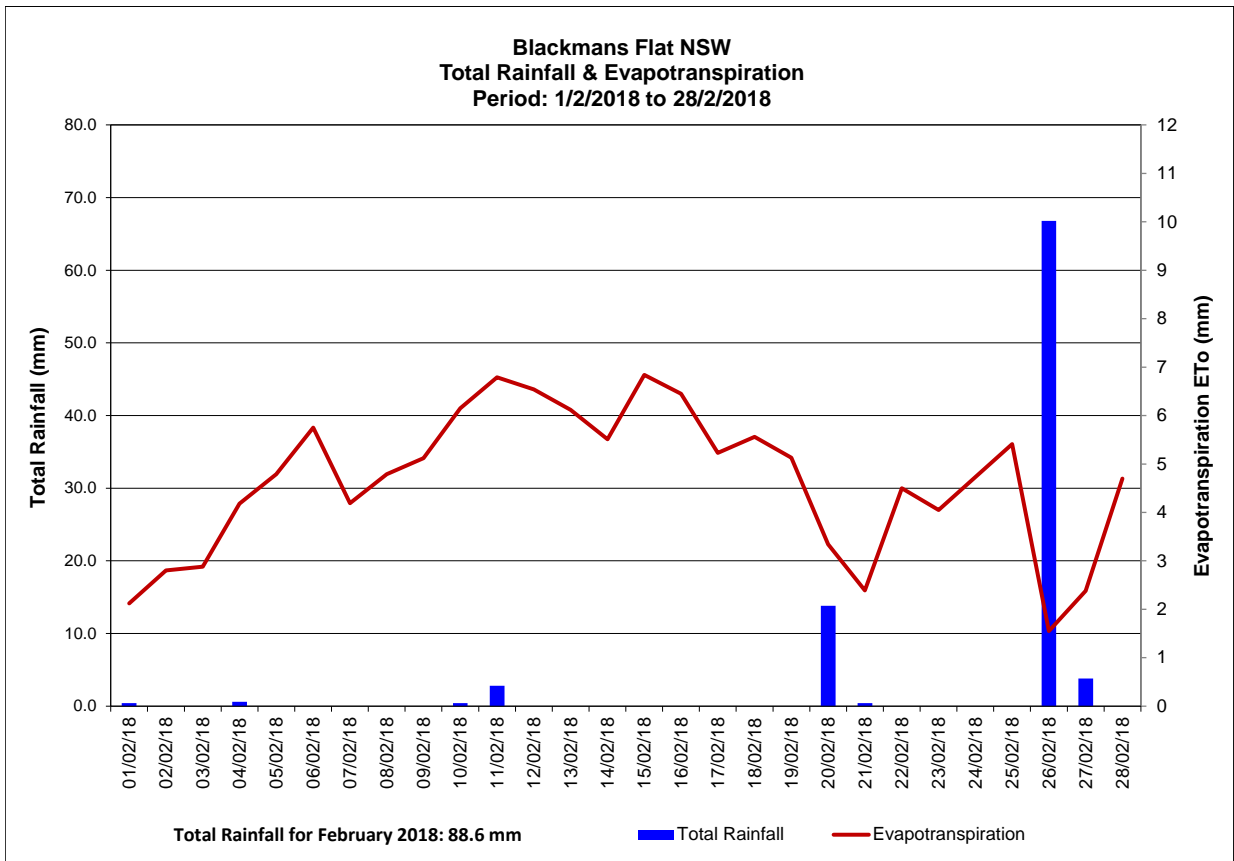
**Pine Dale Mine
Deposited Matter - Insoluble Solids 12 Months Comparative Results
March 2017 to February 2018**



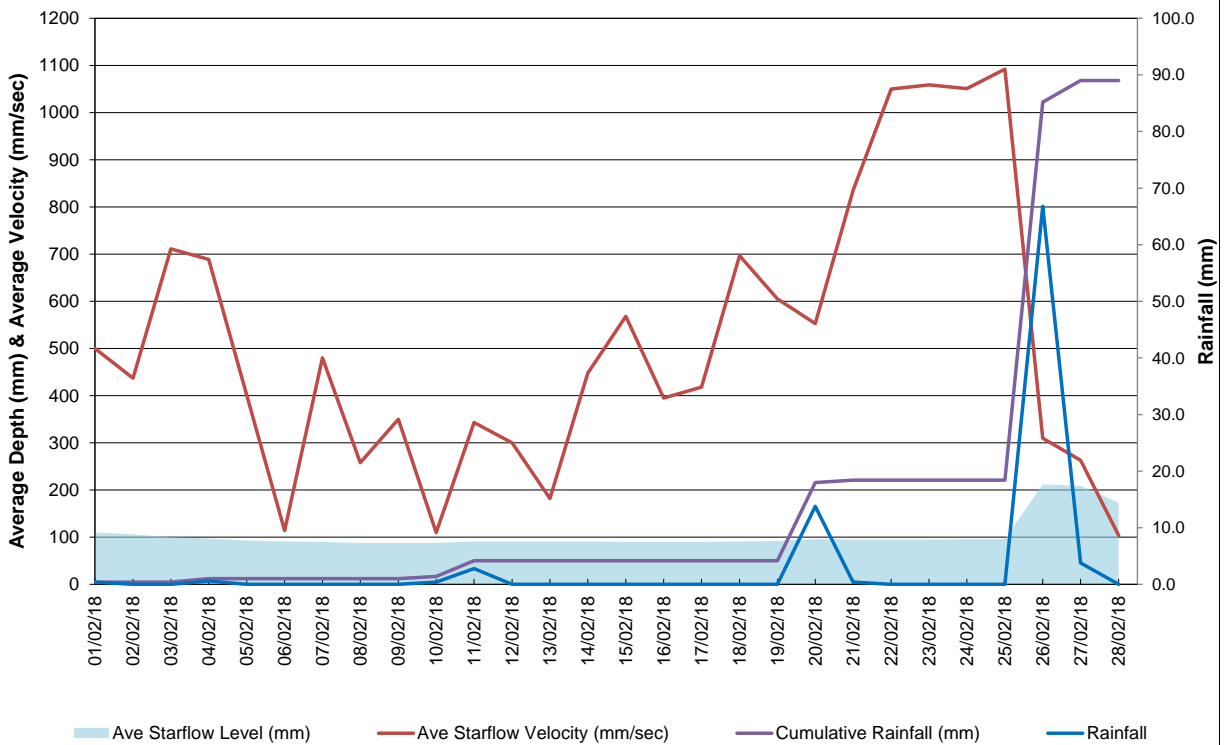


Appendix 3

Meteorological Data



Neubecks Creek - Blackmans Flat NSW
Average Depth & Velocity vs. Rainfall- Period: 1/2/2017 to 28/2/2017



Blackmans Flat NSW
Daily Humidity Variations - Period: 1/2/2018 to 28/2/2018

