

Community Consultative Committee (CCC) Pine Dale Coal Mine – Yarraboldy Extension

C/- Enhance Place Pty
Limited
PO Box 202
Wallerawang NSW 2845

Phone: (02) 6355 1761

Minutes of the Meeting of Members of the Pine Dale Coal Mine-Yarraboldy Extension Community Consultative Committee (CCC),

Held at the Black Gold Conference Centre,

121 Main Street, Wallerawang NSW 2845

On Thursday 6th February, 2014 at 2.00pm

Present:	Mr Howard Fisher	(Chairman)
	Mr Peter Barnes	(Community representative)
	Clr Colin Hunter	(Lithgow City Council)
	Ms Jessica Heath	(Lithgow City Council)
	Mr Graham Goodwin	(Company representative)
	Mr Mark Frewin	(CCC Secretary – Company representative)
Guests:	Ms Karen Tripp	(Environmental Consultant)
Apologies:	Mrs Sharon Brown	(Community representative - Gundungurra Tribal Council)
	Mr Robert Taylor	(Community representative)

1. Welcome and apologies

The Chairman declared the meeting open at 2.05pm.

The apology of Mrs Sharon Brown and Mr Robert Taylor was noted.

2. Minutes of previous meeting

A motion to accept the minutes of the meeting held on the 31st of January 2013 was passed.

3. Matters Arising



Mr Frewin reported back on two matters arising at the previous meeting:

i) Council contributions

Ms Heath summarized correspondence from the Lithgow City Council to Wallerawang School explaining the position with regard to previous Council Contributions made by Pinedale mine. This letter confirmed that past contributions could not be accessed, but that Council would be willing to consider local initiatives for any future contributions.

In addition, Mr Barnes tabled an example Voluntary Planning Agreement used by a nearby project as an example of could be achieved in a future Pinedale project.

ii) Letter received from Ms Favell at the last meeting

The meeting noted the response provided by the Company to this late correspondence received at the last meeting.

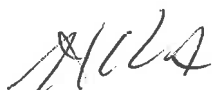
4. Enhance Place (Pine Dale Mine) Yarraboldy Extension – Company report

Mr Goodwin then ran through a presentation to outline the progress of the mine.

4.1 Report on progress of the mine

Key points noted in the update included:

- Operational update:
 - 9 staff were employed on site
 - 290kt produced during 2013 and delivered to Mt Piper Power Station
 - Forecast production to end by the end of March 2014
 - The Purple Copper Butterfly monitoring program had been conducted over the summer months in accordance with commitments
- Rehabilitation update:
 - Mulch, fertilizer and reseeding several rehabilitation areas had been undertaken
 - It was noted that a dry spell following this work meant to date the benefits had yet to materialize
 - Results should become evident once some rain occurs
- Key reports and inspections since last meeting included:
 - Environmental Protection License report had been submitted
 - 2012 Annual Environmental Report site inspection had been conducted by the Department of Resources and Energy



- National Pollutant Inventory and National Greenhouse Gas Emissions Reports had been submitted
- In the coming period, the following reports would be submitted
 - 2013 Annual Environmental Report
 - Revised Mine Operations Plan – to cover the Care and Maintenance period prior to the next planning approval being received.

The following answers were provided in response to questions raised by Committee members:

- Mining is expected to concluded at the end of March
- It was expected that a period of around 12 months could be expected prior to a new planning approval being achieved.

4.2 Groundwater, Depositional Dust, HVAS, Vibration, and Meteorological Monitoring Report– Pine Dale Mine – December 2013

Ms Tripp ran through the outcomes of the 2013 environmental monitoring program.

The main points highlighted in this discussion included:

- There were no exceedances for any parameters in the Companies Environmental Protection License during 2013
- In regard to surface water, there we no discharges made by the Company through its licensed discharge point during 2013. It was noted that the water management system diverts any residual surface water into the abandoned underground workings
- While groundwater monitoring is not a license requirement for the mine, it has been undertaken in order to facilitate greater understanding of groundwater movements in the area. Groundwater levels remained stable during the year.
- Depositional dust monitoring was compliant throughout the period. An uncharacteristic spike in depositional material was identified to be caused by Insects becoming lodged in the measuring system. No other remarkable readings were noted.
- High Volume Air Sampling (HVAS) is conducted to measure the suspended particulates in the air.
 - A spike in readings for the 18th of October 2013 was linked to smoke in the air associated with the significant local bushfires that occurred at that time.
- Noise Monitoring is conducted on a quarterly basis. All monitoring was found to be compliant.
- Blast monitoring showed no exceedances during 2013.

4.3 Complaints discussion

Only 2 complaints were registered during the second half of 2013.

Mr Barnes noted that blast impacts at his residence had improved significantly since the mine had been acquired by EnergyAustralia. He encouraged the Company to continue this positive performance in relation to future blasting practices.

4. General Business

4.1 Correspondence

Mr. Frewin reported that the only outgoing correspondence issued had been the notice to residents of the upcoming meeting.

No other correspondence was received.

4.2 Discussion regarding reversing beepers

Mr Barnes noted that he had been approached by some residents, and had noted himself, that a new security patrol service engaged by the Company to patrol the site, had created an annoyance by the use of load reversing beepers on their vehicles during patrols overnight. He indicated that this had led to him contacting the RTA to discuss the matter, and that it has then been referred onto the EPA, who he understood would be contacting the Company.

Mr Frewin sought to clarify his understanding of the situation, which was that Mr Barnes had contacted him late in 2013 to report this matter. Mr Frewin recalled that the Company had taken immediate action at that time, to change the work practices of the security contractor, and that his understanding was that the matter had been resolved at that time. Mr Barnes noted that action had been promptly taken at that time, but that more recently the problem had reemerged, albeit on a smaller scale.

Mr Goodwin outlined the history around the matter. He exhibited a padlock from one of the Company gates which had been destroyed by intruders. Following this event the Company had engaged the security monitoring service.

Following the discussions with Mr Barnes in late 2013 regarding the annoyance from security beepers, Mr Goodwin had issued revised work instructions to the security contractor seeking to alter their procedures to avoid noise impact on residents. At the time, this seemed to resolve the matter, and the Company had not been aware of any continuing issues, until it was contacted by the EPA on the day prior to the CCC meeting.

After a lengthy discussion, it was determined by the Committee that Mr Goodwin and Mr Barnes should liaise after the meeting to seek a resolution to the matter. It was resolved that the Company would report back to the Committee with the resolution determined.

[Note: An email was circulated to the Committee soon after the meeting, and this matter has now been resolved.]

 4

4.3 Other business

Mr Frewin provided a brief update on progress with regard to proposed stage 2 of the mine. The Company is continuing to develop the planning application for the mine, although this has been delayed due to some technical matters.

Ms Heath suggested that it would be worth the CCC being briefed on the project prior to exhibition, and queried when this might be.

Mr Frewin indicated some timing uncertainty remained, and it would be best to schedule the next CCC for the middle of 2014 and review the situation at that stage.

4.4 Next Meeting

The next meeting would be held during June 2014, with the Secretary to liase with members closer to that time to identify a suitable date.

Meeting closed.

 11/12/2014

Attachments:

1. RCA report: Ground Water, Surface Water, Depositional Dust, HVAS and Meteorological monitoring report – December 2013.
2. Letter from Council re: School funding

Attachment 1 - Pine Dale CCC Environmental Report

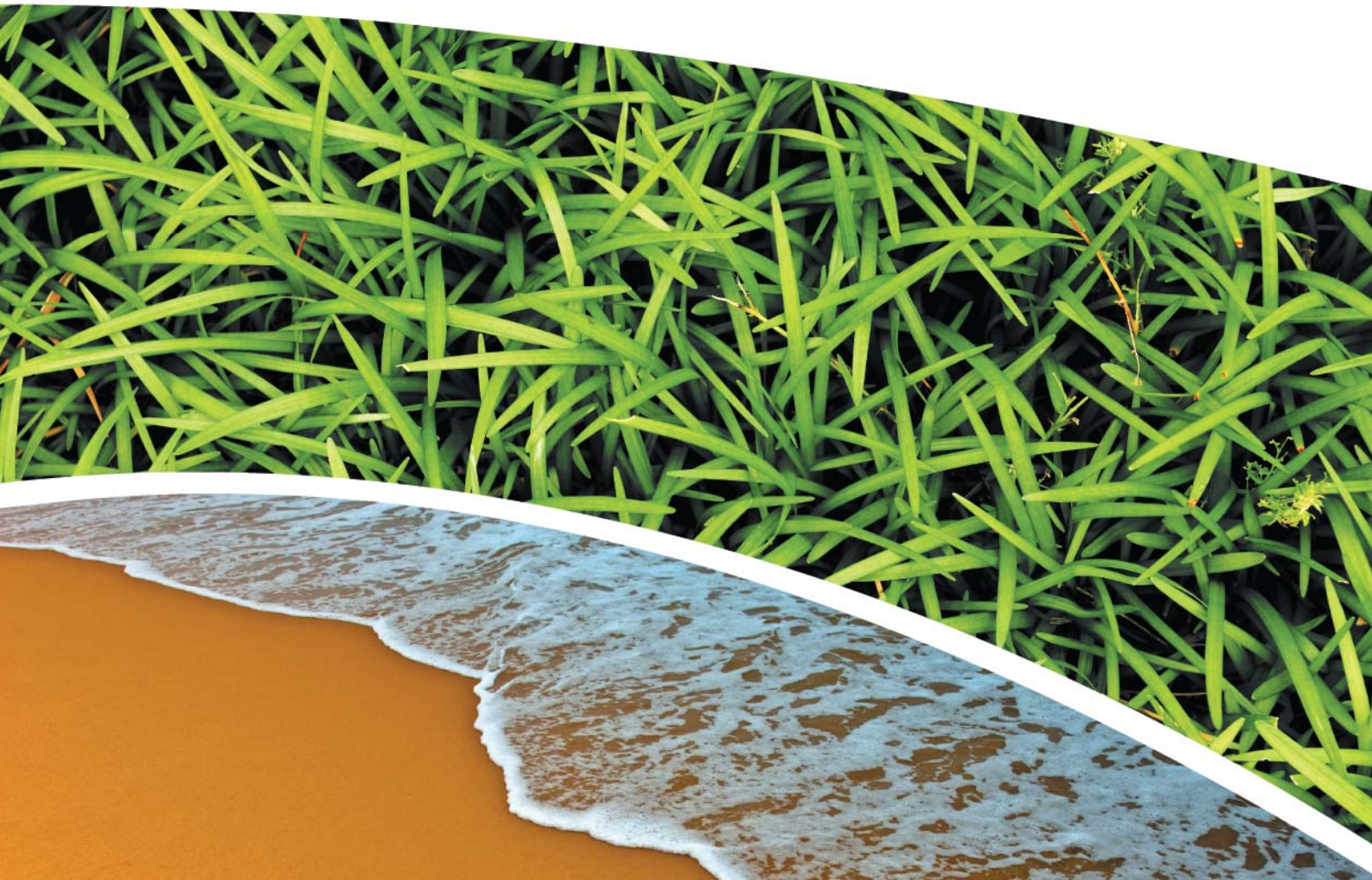
**SURFACE WATER, DEPOSITIONAL DUST,
HVAS AND METEOROLOGICAL MONITORING**

Prepared for Pine Dale Mine Community Consultative Committee

Prepared by RCA Australia

RCA ref 6880-839/0

December 2013



RCA AUSTRALIA

ABN 53 063 515 711

92 Hill Street, CARRINGTON NSW 2294

Telephone: +61 2 4902 9200

Facsimile: +61 2 4902 9299

Email: administrator@rca.com.au

Internet: www.rca.com.au

This document is and shall remain the property of RCA Australia. The document may only be used for the purpose for which it was commissioned and in accordance with the Terms of Engagement for the commission supplied at the time of proposal. Unauthorised use of this document in any form whatsoever is prohibited.

DOCUMENT STATUS						
Rev No	Comment	Author	Reviewer	Approved for Issue (Project Manager)		
				Name	Signature	Date
/0	Final	K Shaw	K Tripp	K Tripp	<i>KT</i>	16.01.14

DOCUMENT DISTRIBUTION				
Rev No	Copies	Format	Issued to	Date
/0	1	Electronic (email)	Pine Dale Mine – Graham Goodwin graham.goodwin@energyaustralia.com.au	16.01.14
/0	1	Electronic (email)	EnergyAustralia – Tom Hurdley tom.hurdley@energyaustralia.com.au	16.01.14
/0	1	Electronic (email)	EnergyAustralia- Mark Frewin mark.frewin@energyaustralia.com.au	16.01.14
/0	1	Electronic (email)	Lithgow City Council – Andrew Muir andrew.muir@lithgow.nsw.gov.au	16.01.14
/0	1	Electronic report	RCA – job archive	16.01.14

RCA LE ref 6880-839/0



16 January 2013

Pine Dale Mine
PO Box 202
WALLERAWANG NSW 2845

Attention: Mr Graham Goodwin

**REPORT COMPILED FOR
PINE DALE MINE COMMUNITY CONSULTATIVE COMMITTEE
DETAILING SURFACE WATER, GROUNDWATER DEPOSITIONAL DUST,
HVAS AND METEOROLOGICAL MONITORING
DECEMBER 2013**

1 GENERAL COMMENTS

Job Number: 6880.

Date Samples Received: During the month of December 2013.

Samples received were sampled by RCA Laboratories – Environmental staff.

This report satisfies the requirements to monitor environmental parameters as presented in the Pine Dale Mine Environmental Protection Licence (EPL 4911).

2 ANALYTICAL PROCEDURES

The analytical procedures used by RCA Laboratories – Environmental are based on established internationally recognised procedures such as APHA and Australian Standards. Analytical test methods are detailed in **Table 1**. When an external testing laboratory is used to obtain the analysis of samples which become a part of this report, then the details of that laboratory's official report will be attached in an Appendix.

Table 1 Analytical Test Methods

ANALYSIS	METHOD	UNITS	ANALYSING LABORATORY	NATA/ NON-NATA ANALYSIS
Determination of Suspended Particulate Matter	ENV-LAB003	µg/m ³	RCA Laboratories - Environmental	NATA Analysis
Determination of Particulate Matter – Deposited Matter	ENV-LAB004	g/m ² .month	RCA Laboratories - Environmental	NATA Analysis
pH	ENV-LAB006	pH	RCA Laboratories - Environmental	NATA Analysis
Conductivity	ENV-LAB010	µS/cm	RCA Laboratories - Environmental	NATA Analysis
Total Suspended Solids	ENV-LAB009	mg/L	RCA Laboratories - Environmental	NATA Analysis
Total Dissolved Solids	ENV-LAB020	mg/L	RCA Laboratories - Environmental	NATA Analysis
Turbidity	ENV-LAB037	NTU	RCA Laboratories - Environmental	NATA Analysis*
Oil and Grease	ENV-LAB022	mg/L	RCA Laboratories - Environmental	Non-NATA Analysis
Dissolved Oxygen	Manufacturer's Instructions	mg/L	RCA Laboratories - Environmental	Non-NATA Analysis**
Major Anions (Alkalinity, Cl, SO ₄)	ED037, ED041, ED045	mg/L	ALS	NATA Analysis
Major Cations (Ca, Mg, Na, K)	ED093	mg/L	ALS	NATA Analysis
Dissolved Metals	EG020F	mg/L	ALS	NATA Analysis

*Note that turbidity sampling and analysis is conducted to NATA approved method ENV-LAB037, however as the meter is not owned by RCA Laboratories- Environmental the test cannot be considered NATA accredited.

**Dissolved oxygen measurements are undertaken in the field using the DO Meter owned by PDM.

3 WATER MONITORING RESULTS

3.1 GROUNDWATER

A total of 2 on-site groundwater samples were collected during the month of December 2013. Sampling at Bores P2, P3 and P7a are no longer required under the new sampling regime undertaken in accordance with Project Approval (PA 10_0041) and the Pine Dale Mine Water Management Plan (Report No. 613/20). The new sampling regime commenced 1 August 2013. Water quality analysis results are shown in **Table 2**.

Table 2 Groundwater Analysis Results

ANALYSIS	UNITS	P6	P7
Sample Number	-	12136880014	12136880015
Date Sampled	-	18/12/13	18/12/13
Time Sampled	-	14:50	16:05
Depth to Water from Surface*	m	26.25	6.60
Water Level (AHD)	m	890.70	887.80
Temperature	°C	15.0	15.0
pH	pH	6.34	7.26
Conductivity	µS/cm	1183	902
Turbidity	NTU	5	
Dissolved Oxygen	mg/L	5	
TSS	mg/L	16	
Oil & Grease	mg/L	<2	
Bicarbonate Alkalinity (CaCO ₃)	mg/L	44	
Total Alkalinity (CaCO ₃)	mg/L	44	
Sulfate (as SO ₄)	mg/L	560	
Chloride	mg/L	24	
Calcium	mg/L	106	
Magnesium	mg/L	51	
Sodium	mg/L	40	
Potassium	mg/L	21	
Cobalt (dissolved)	mg/L	0.051	
Manganese (dissolved)	mg/L	2.05	
Nickel (dissolved)	mg/L	0.072	
Zinc (dissolved)	mg/L	0.008	
Iron (dissolved)	mg/L	19.2	

NOTES: *Depth relative to ground level (not standpipe height).

■ Indicates analysis was not required

Groundwater monitoring locations are shown in **Appendix 1**.

3.2 EPA SURFACE WATER MONITORING

Routine quarterly surface waters were not scheduled to be monitored this month. Quarterly surface water monitoring is next scheduled to be undertaken in February 2014.

4 AIR QUALITY MONITORING RESULTS

4.1 HIGH VOLUME AIR SAMPLERS (HVAS)

HVAS at this facility conform to AS/NZS 3580.9.3:2003, AS/NZS 3580.9.6:2003 and AS/NZS 3580.1.1:2007.

HVAS Total Suspended Particulate analysis results are shown in **Table 3**.

PM₁₀ Suspended Particulate Matter results are shown in **Table 4**.

Table 3 Total Suspended Particulates ($\mu\text{g}/\text{m}^3$ 0°C 101.3 kPa)

RUN DATE	TSP ($\mu\text{g}/\text{m}^3$)	SAMPLE NUMBER	FILTER NUMBER	DATE FILTER OFF	TIME FILTER OFF	FIELD TECH	HOURS RUN
05-Dec-13	18	12136880034	8725919	09-Dec-13	14:50	Client	24.00
11-Dec-13	37	12136880036	8725921	12-Dec-13	13:40	Client	24.00
17-Dec-13	20	12136880038	8725923	18-Dec-13	13:40	Client	24.00
23-Dec-13	52	12136880040	8725925	27-Dec-13	10:50	Client	24.00
29-Dec-13	46	12136880042	8885680	02-Jan-14	10:03	Client	24.00

Table 4 Suspended Particulate Matter PM₁₀ ($\mu\text{g}/\text{m}^3$ 0°C 101.3 kPa)

RUN DATE	PM ₁₀ ($\mu\text{g}/\text{m}^3$)	SAMPLE NUMBER	FILTER NUMBER	DATE FILTER OFF	TIME FILTER OFF	FIELD TECH	HOURS RUN
05-Dec-13	6	12136880035	8725920	09-Dec-13	14:50	Client	24.00
11-Dec-13	14	12136880037	8725922	12-Dec-13	13:40	Client	24.00
17-Dec-13	9	12136880039	8725924	18-Dec-13	13:40	Client	24.00
23-Dec-13	22	12136880041	8885679	27-Dec-13	10:50	Client	24.00
29-Dec-13	24	12136880043	8885681	02-Jan-14	10:03	Client	24.00

4.1.1 TSP Summary

The EPA Annual Mean TSP allowable limit is $90\mu\text{g}/\text{m}^3$. All TSP HVAS results recorded during this monitoring period are in compliance with consent conditions, as the current rolling annual mean (from January to December 2013) for the TSP unit is $26.2\mu\text{g}/\text{m}^3$, which is well below the allowable limit of $90\mu\text{g}/\text{m}^3$.

4.1.2 *PM*₁₀ Summary

The EPA 24h Maximum *PM*₁₀ allowable limit is 50µg/m³. The EPA Annual Mean *PM*₁₀ allowable limit is 30µg/m³. All *PM*₁₀ HVAS results recorded during this monitoring period conform to consent conditions, as the current rolling annual mean for the *PM*₁₀ unit is 12.7µg/m³, which is below the allowable limit of 30µg/m³. The 24 hour maximum allowable limit of 50µg/m³ was not exceeded during the month of December 2013.

4.1.3 Comments

HVAS monitoring locations are shown in **Appendix 1**.

Graphical HVAS results presentations are shown in **Appendix 2**.

4.2 DEPOSITIONAL DUST

Depositional Dust Gauges at this facility conform to AS/NZS 3580.10.1:2003 and AS/NZS 3580.1.1:2007. Depositional Dust monitoring results are shown in **Table 5**.

Table 5 *Depositional Dust Monitoring - Deposited Matter December 2013*

SAMPLE NUMBER	DEPOSIT GAUGE	DATE SAMPLE STARTED	DATE SAMPLE COMPLETED	NUMBER OF DAYS	NOTES	INSOLUBLE SOLIDS (g/m ² .month)	ASH (g/m ² .month)	COMBUSTIBLE MATTER (g/m ² .month)
12136880024	D1	20/11/2013	19/12/2013	29	I	9.5	1.2	8.3
12136880025	D2	20/11/2013	19/12/2013	29	I	1.2	0.6	0.6
12136880026	D3	20/11/2013	19/12/2013	29	I	1.7	0.9	0.8
12136880027	D4	20/11/2013	19/12/2013	29	IG	1.3	0.4	0.9
12136880028	D5	20/11/2013	19/12/2013	29	I	1.2	0.6	0.6
12136880029	D6	20/11/2013	19/12/2013	29	BF	--	--	--

4.2.1 Glossary of Terms Used in Notes

I	Insects (eg, Ants, spiders)	IT	Insects (eg, Ants, spiders) and Tree litter
IG	Insects (eg. Ants, spiders) and Grass	BF	Invalid Sample: Broken Funnel

4.2.2 Allowable Depositional Dust Limits

The EPA Long Term (Annual Average) Dust Limit is 4g/m² per month. All Depositional Dust results during this monitoring period are in compliance with consent conditions. An elevated result was noted at dust monitoring location D1 this month (9.5 g/m² per month); however field notes indicate that insects were present in the sample. The ash and combustible matter results indicate that organic material (i.e. insects) contributed to 87% of the sample and therefore only a very small portion of the sample consisted of deposited dust. The Annual Average for Dust Gauges D1, D2, D3, D4, D5 and D6 are all less than or equal to 1.6g/m² per month, which is below the allowable Annual Average Long Term Limit of 4g/m² per month.

Depositional Dust monitoring locations are shown in **Appendix 1**.

Graphical Depositional Dust results are shown in **Appendix 2**.

5 BLASTING RESULTS

Blasting results for the month of December are shown in **Table 6**.

Table 6 *Blasting Results- Airblast Overpressure (dB) and Ground Vibration (mm/sec)*

Date	<i>Park</i>		<i>Noon St.</i>		<i>Summer St.</i>	
	Overpressure (dB)	Vibration (mm/sec)	Overpressure (dB)	Vibration (mm/sec)	Overpressure (dB)	Vibration (mm/sec)
12/12/2013	NT	NT	NT	NT	NT	NT
2012- 2013 Year to Date Information						
Minimum	96.9	0.38	78.3	0.08	87.2	0.08
Average	96.9	0.38	104.1	0.85	106.0	1.05
Maximum	96.9	0.38	113.5	2.21	113.3	2.17
% > EPL 95% Compliance Criteria	0.0%	0.0%	0.0%	0.0%	0.0%	0.0%
% > EPL 100% Compliance Criteria	0.0%	0.0%	0.0%	0.0%	0.0%	0.0%

Notes: NT - No Trigger. Blast monitoring unit was not triggered during the blast.

5.1.1 Allowable Blasting Limits

Conditions of EPL 4911 state that in relation to airblast overpressure levels a result of greater than 115dB must not be observed at any noise sensitive location for more than 5% of the total number of blasts over each annual reporting period. All blasts within the annual reporting period (100% of blasts) are not to exceed the compliance criteria of 120dB. Ground vibration peak velocity levels must not exceed 5mm/sec for 95% of blasts, whilst an intensity of 10mm/sec must not be exceeded by any blast during the reporting period. The reporting period runs as a rolling 12-month average from January 2013 to December 2013.

During December 2013, none of the blast monitors were triggered during the single blasting event during the month, and therefore there was no exceedance of the EPL conditions for either overpressure or vibration levels. In terms of the rolling annual average, no blasts have exceeded the 100% compliance conditions of 120dB and 10mm/sec for overpressure and vibration respectively. The overpressure and vibration criteria of 115dB and 5mm/sec, respectively, have not been exceeded for more than 5% of the blasts during the reporting period.

Graphical presentation of the blasting results from overpressure and vibration are shown in **Appendix 2**.

6 NOISE MONITORING RESULTS

Routine quarterly noise monitoring was not required to be undertaken this month. Quarterly noise monitoring is next scheduled to be undertaken during the January 2014 period.

7 OPERATIONAL ACTIVITIES

Pine Dale Mine production rates in December 2013 were good, with no major issues recorded. There were 15 production days available due to the Christmas break and no weekend work was undertaken during the month. Only one blast was shot throughout the month.

Relatively low rainfall was observed throughout the working month, with the majority (25.4mm) falling on the 26 December, which did not have an impact upon mine operations due to the mine's closure over the Christmas break. The overburden target was on budget this month, whilst the run of mine (ROM) coal from the mine to the raw coal crusher pad were above budget due to the timing of coal recovery that overran from last month. Waste production was slightly below target this month, with approximately 76,000 tonnes of overburden excavated. Delivery of coal to Mt Piper was below budget with a total of 17,013 tonnes of coal delivered to Mt Piper Power Station.

8 SUMMARY

During the month of December 2013 all environmental monitoring constituents were found to be in compliance with EPL 4911.

Quarterly surface water sampling was not required to be conducted this month, with sampling next scheduled for February 2014.

Rolling annual averages from both the TSP and PM₁₀ High Volume Air Samplers are currently well below the EPA Annual Mean TSP and PM₁₀ criterion of 90µg/m³ and 30µg/m³ respectively.

Currently there are no depositional dust gauge results which are greater than the EPA Long Term (annual average) criteria of $4\text{g/m}^2\cdot\text{month}$ based upon a rolling average of the past 12 months. A high result was observed at D1 this month, however, upon investigation this is likely to be caused from organic contamination with inorganic material contributing to only 13% of the sample. The annual average at D1 still remains relatively low with a level of $1.6\text{g/m}^2\cdot\text{month}$ currently being observed. The rest of the EPL dust gauges have annual average results less $1.0\text{g/m}^2\cdot\text{month}$, and are all in compliance with consent conditions.

During December the blasting limits documented in the Pine Dale Mine EPL were not exceeded. During the previous twelve-month reporting period, there have been zero non-conformance's based upon the 95% or 100% limits for either overpressure or vibration levels.

Quarterly noise monitoring was not conducted this month, and is scheduled to be conducted in January 2014.

This report must not be reproduced except in full. Results or figures from this report must not be used without acknowledgment.

Please contact the undersigned if you have any queries.

Yours sincerely



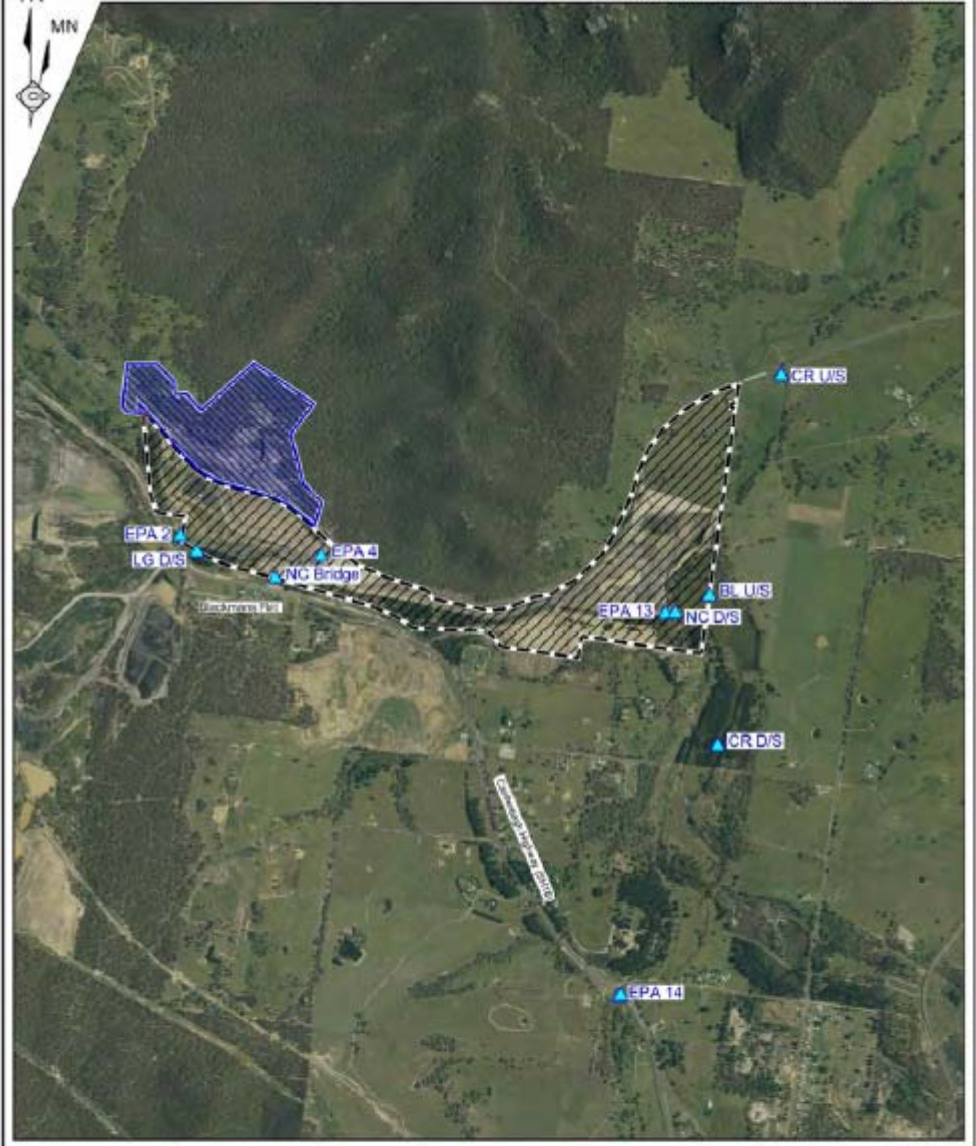
Katy Shaw
Environmental Scientist
RCA Australia Pty Ltd trading as
RCA Laboratories – Environmental



Karen Tripp
Senior Environmental Scientist/Hygienist
RCA Australia Pty Ltd trading as
RCA Laboratories – Environmental

Appendix 1

Surface Water Groundwater and Air Quality Monitoring Locations



REFERENCE
Pine Dale Coal Mine
Yarraboldy Extension
EPA 14 Surface Water Monitoring Location

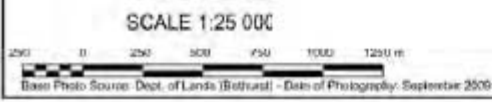
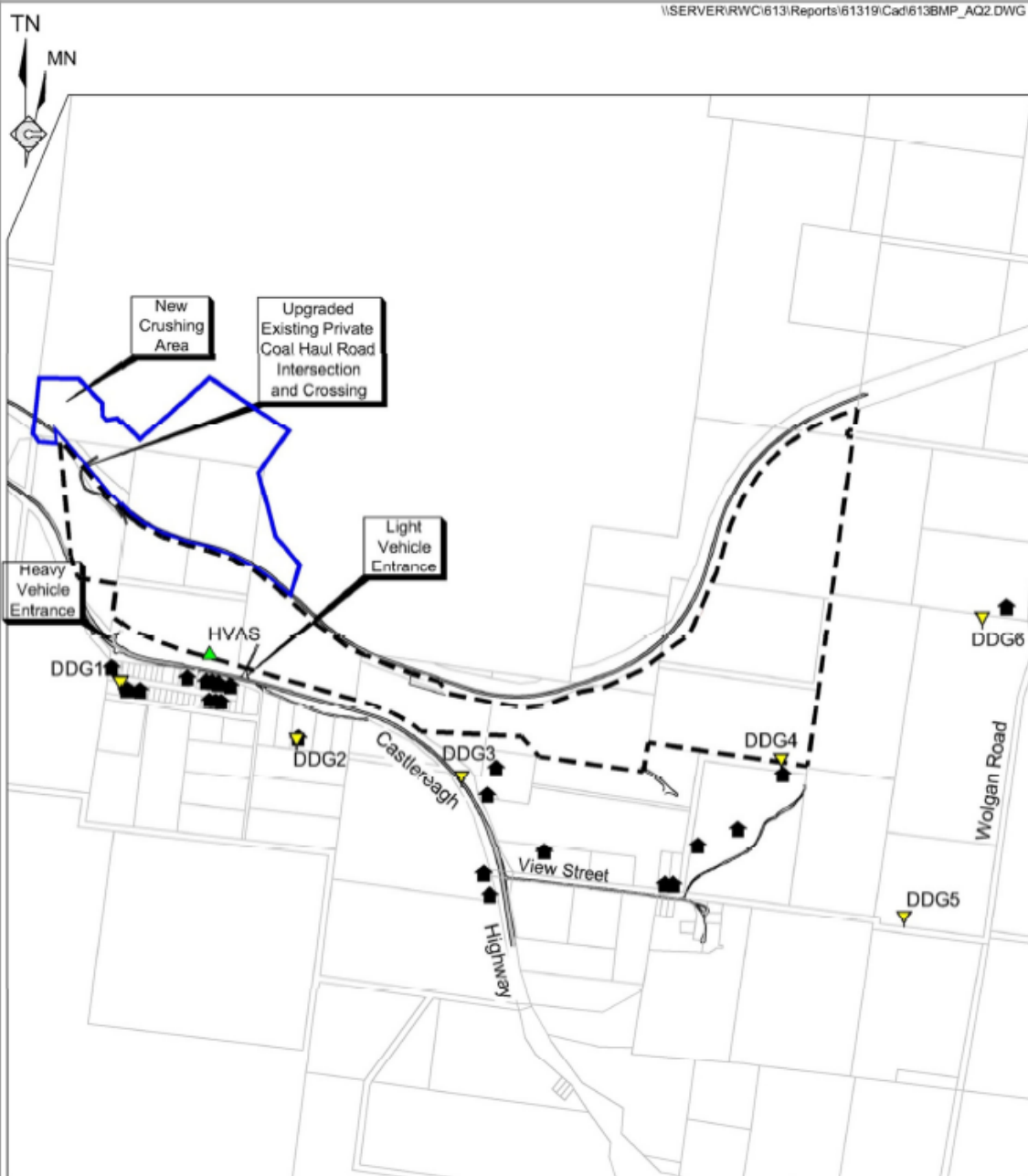


Figure WM5
SURFACE WATER
MONITORING LOCATIONS





- REFERENCE
- Pine Dale Coal Mine
 - Yarraboldy Extension
 - Cadastral Boundary
 - 🏠 Residence
 - DDG1 ▾ Air Quality Monitoring Location (Deposited Dust)
 - HVAS ▲ Air Quality Monitoring Location (High Volume Sampling)

SCALE 1:20 000

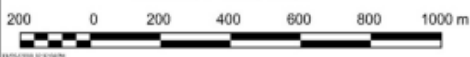
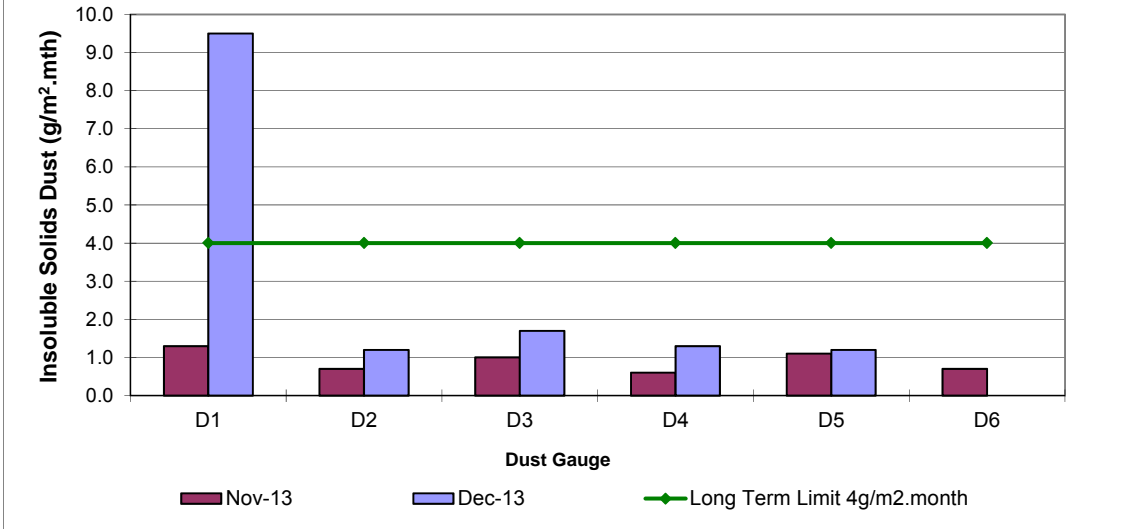


Figure AQ2
AIR QUALITY MONITORING
LOCATIONS

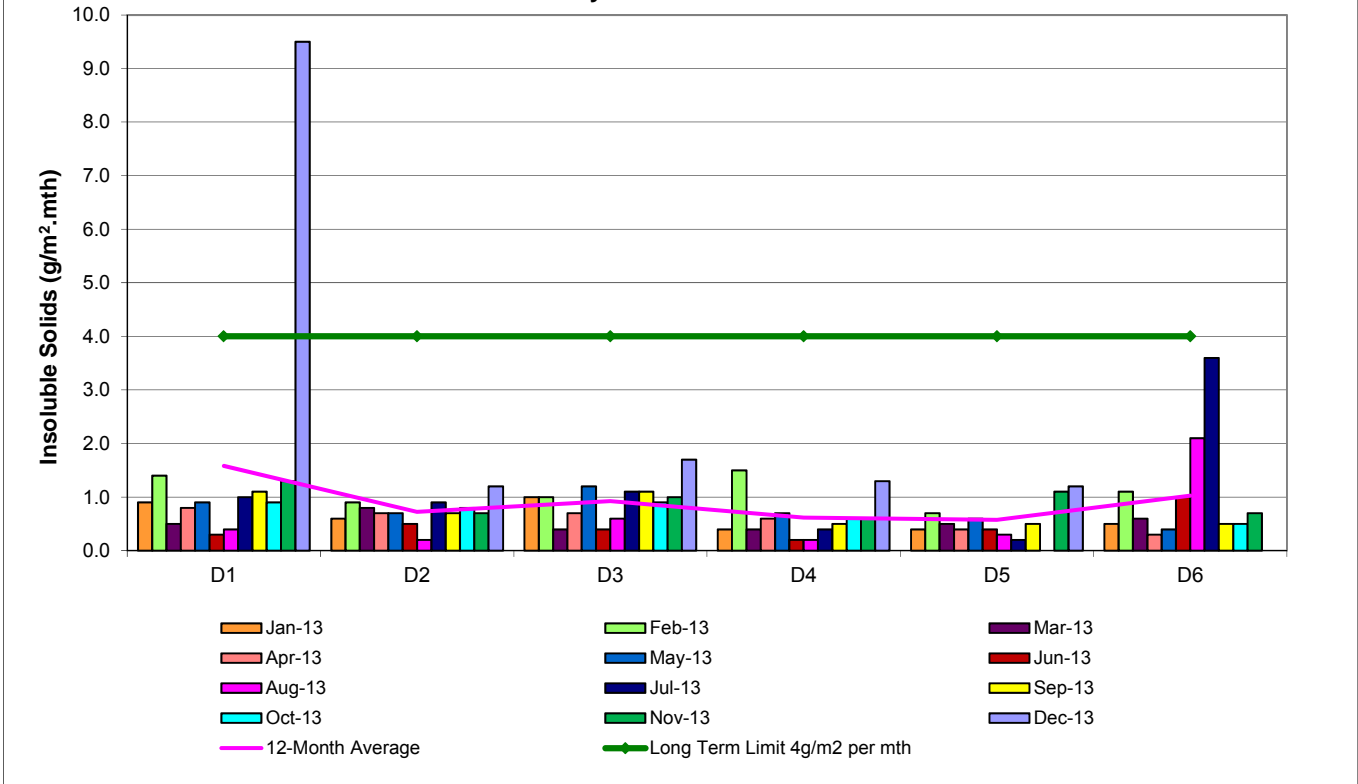
Appendix 2

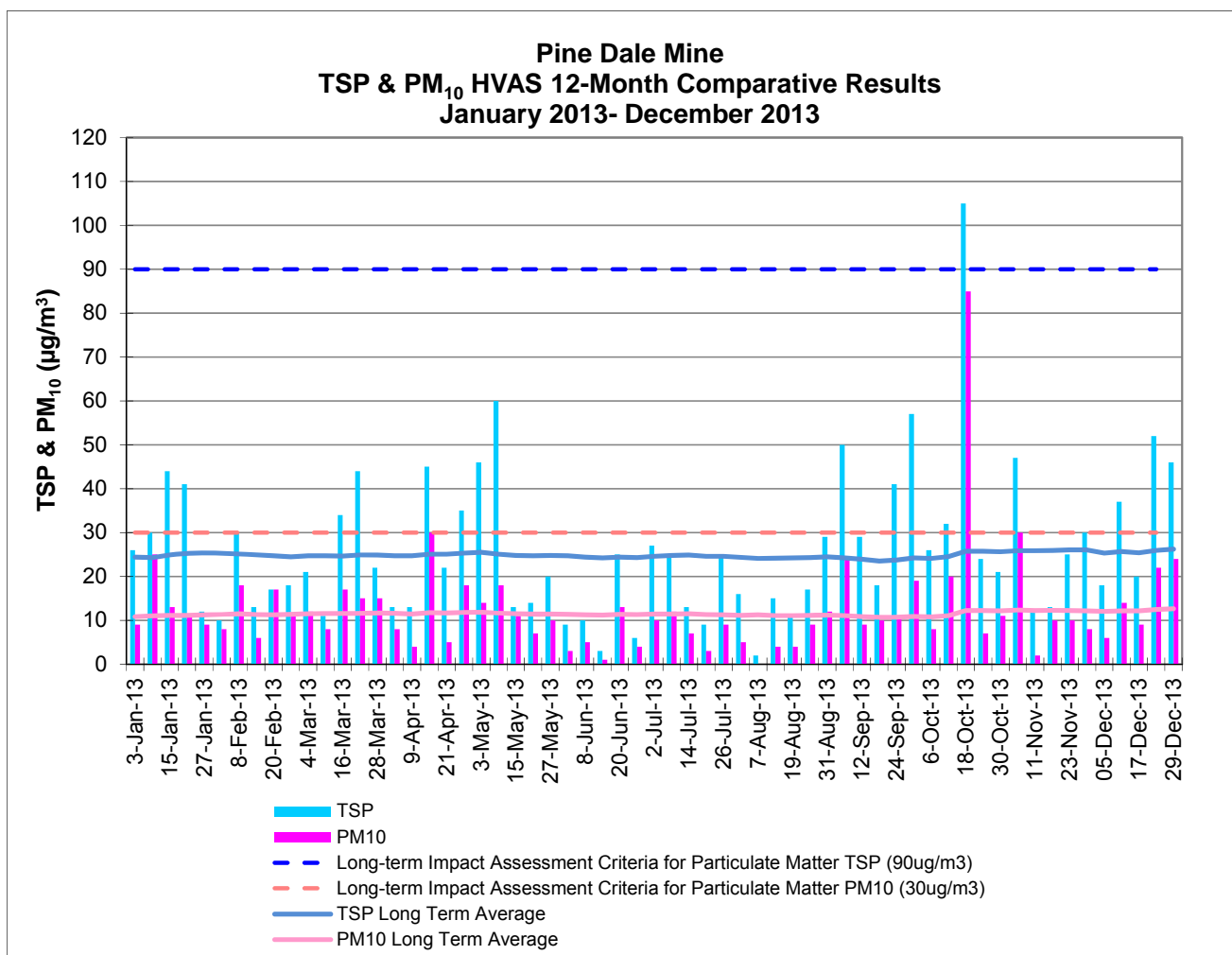
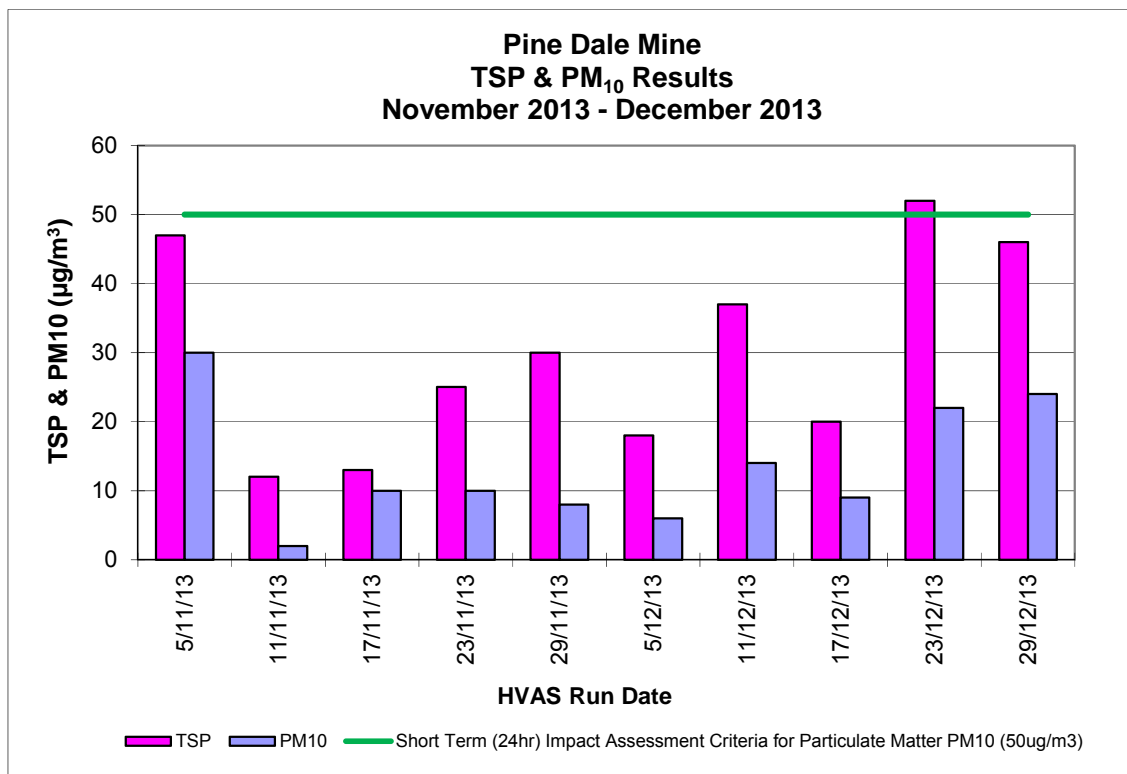
Depositional Dust, HVAS and Blast Result Graphs

**Pine Dale Mine
Depositional Dust Gauge Comparative Results
November 2013 - December 2013**

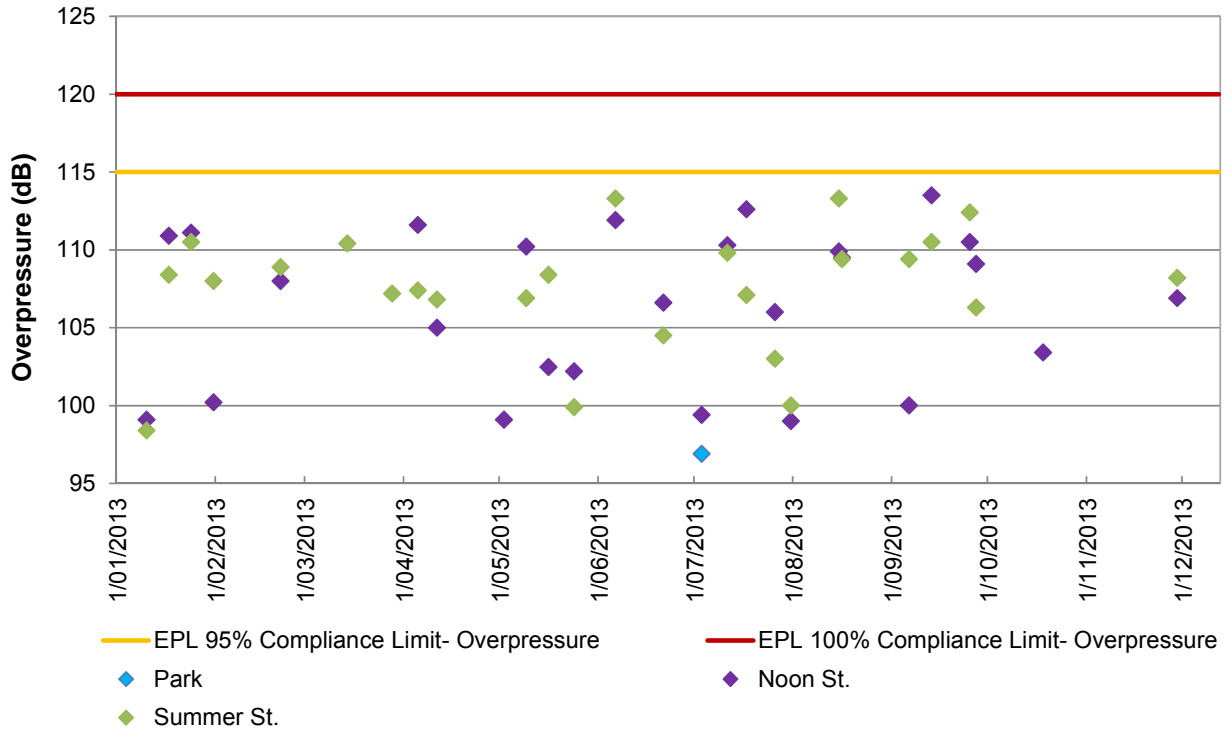


**Pine Dale Mine
Deposited Matter - Insoluble Solids 12 Months Comparative Results
January 2013 - December 2013**

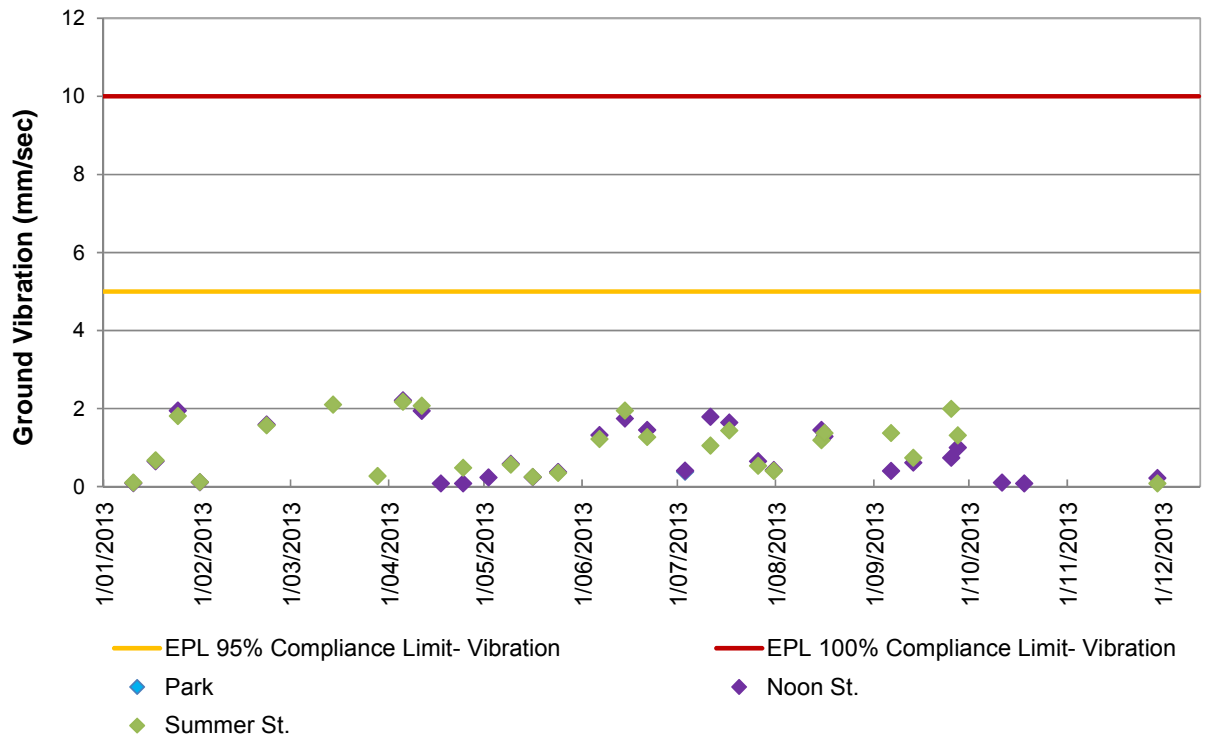




**Pine Dale Mine
Blasting- Airblast Overpressure
January 2013 to December 2013 Comparable Data**



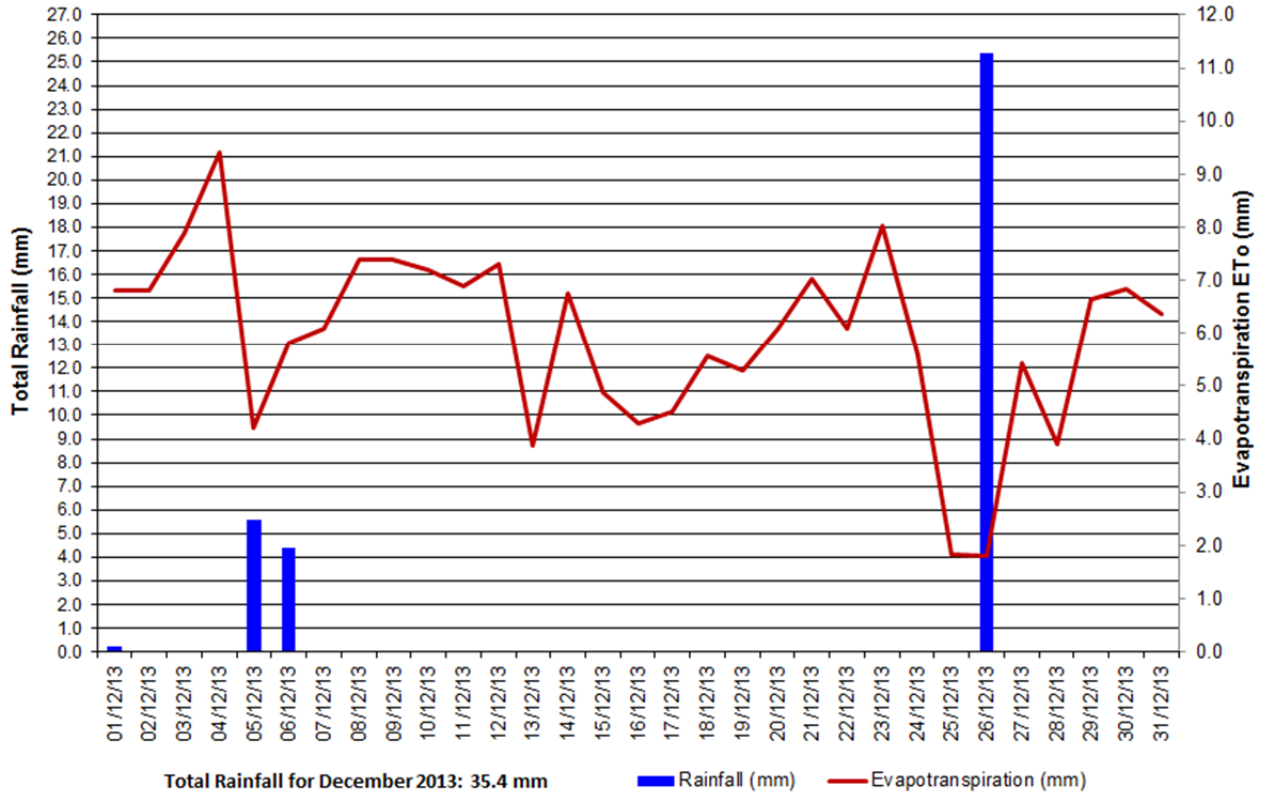
**Pine Dale Mine
Blasting- Ground Vibration
January 2013 to December 2013 Comparable Data**



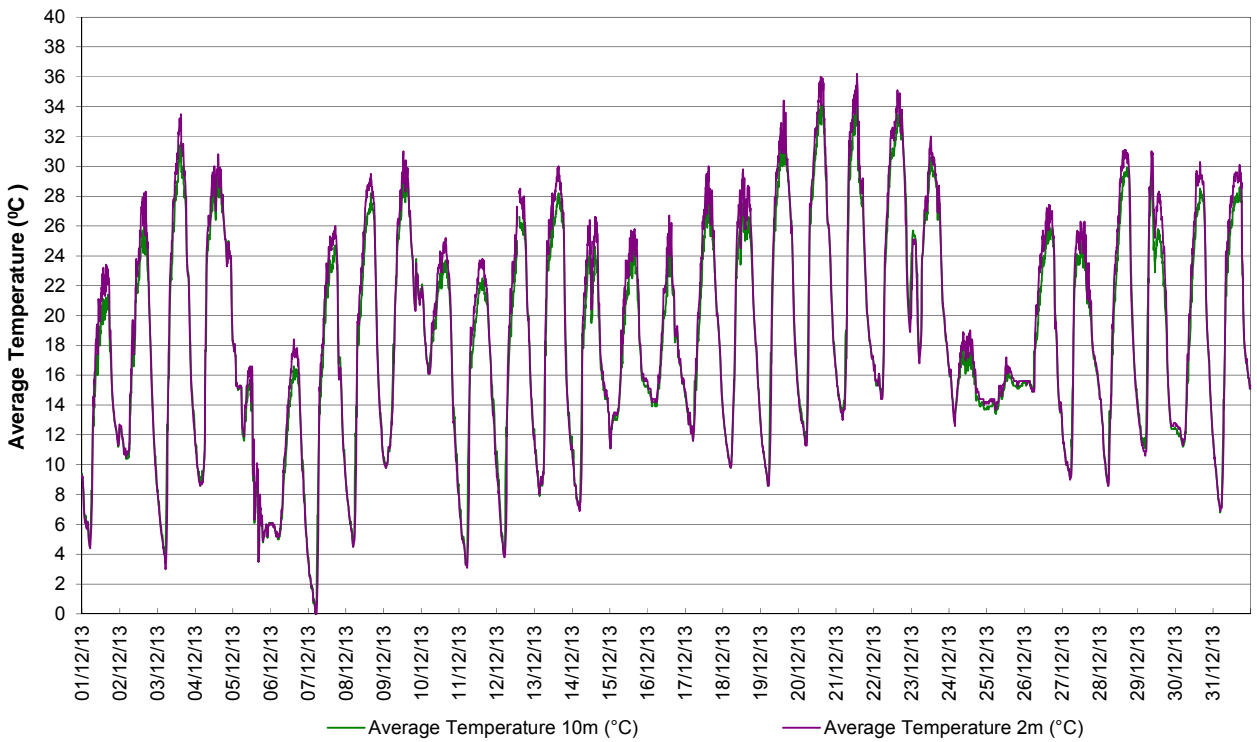
Appendix 3

Meteorological Data

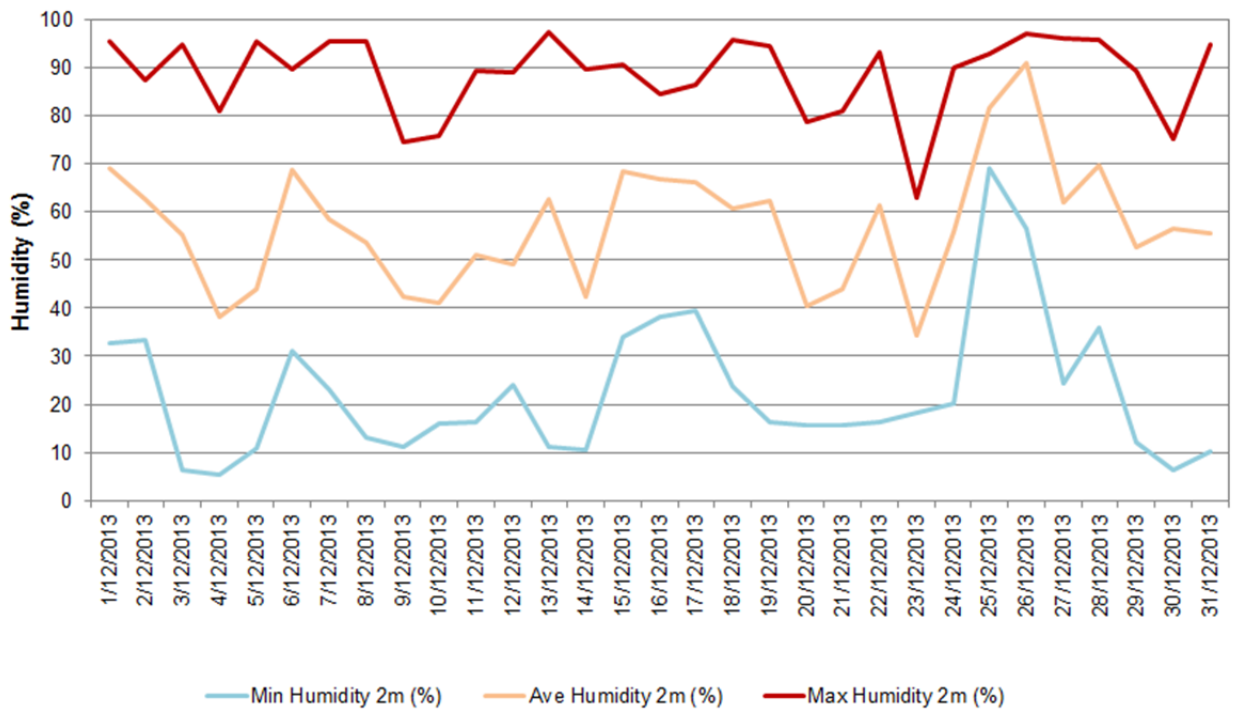
Blackmans Flat NSW
Total Rainfall & Evapotranspiration
 Period: 1/12/2013 to 31/12/2013



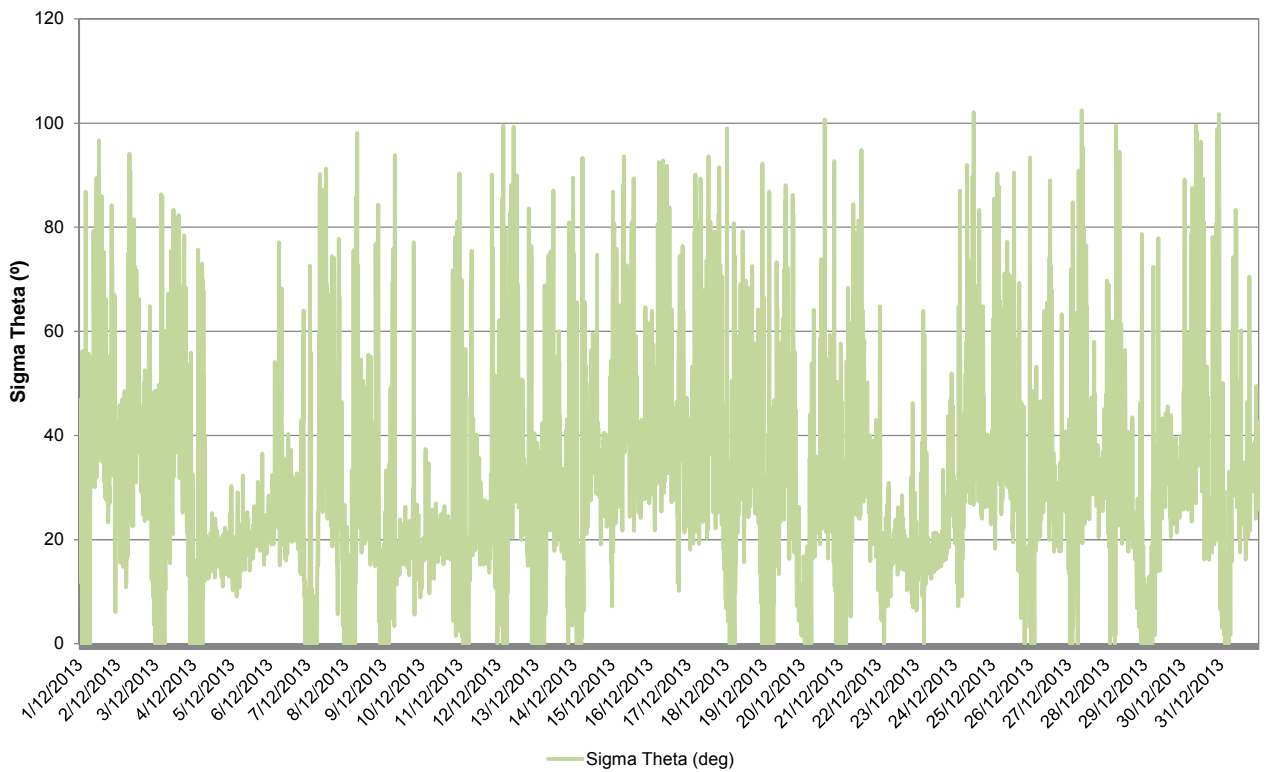
Blackmans Flat NSW
Average Air Temperature - Period: 1/12/2013 to 31/12/2013

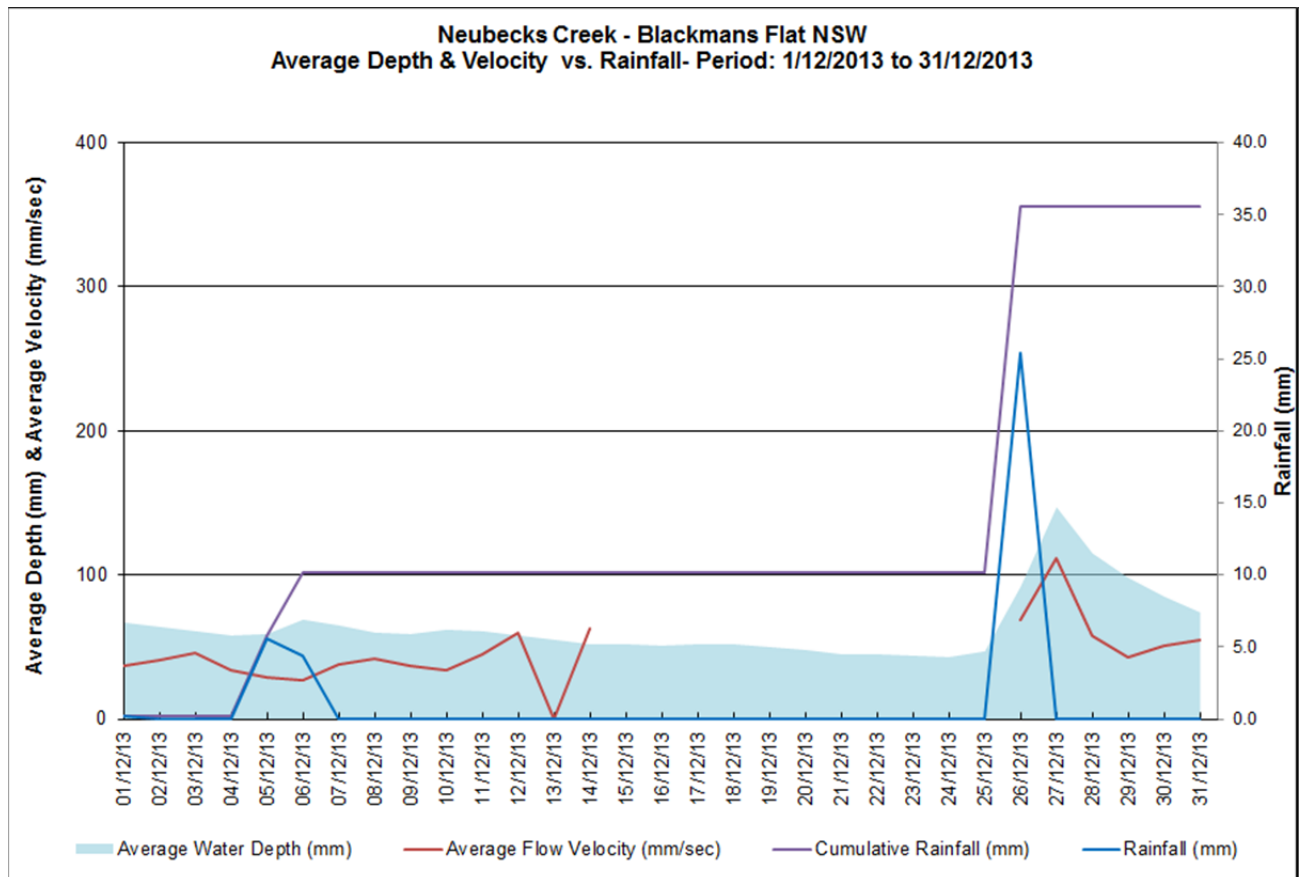
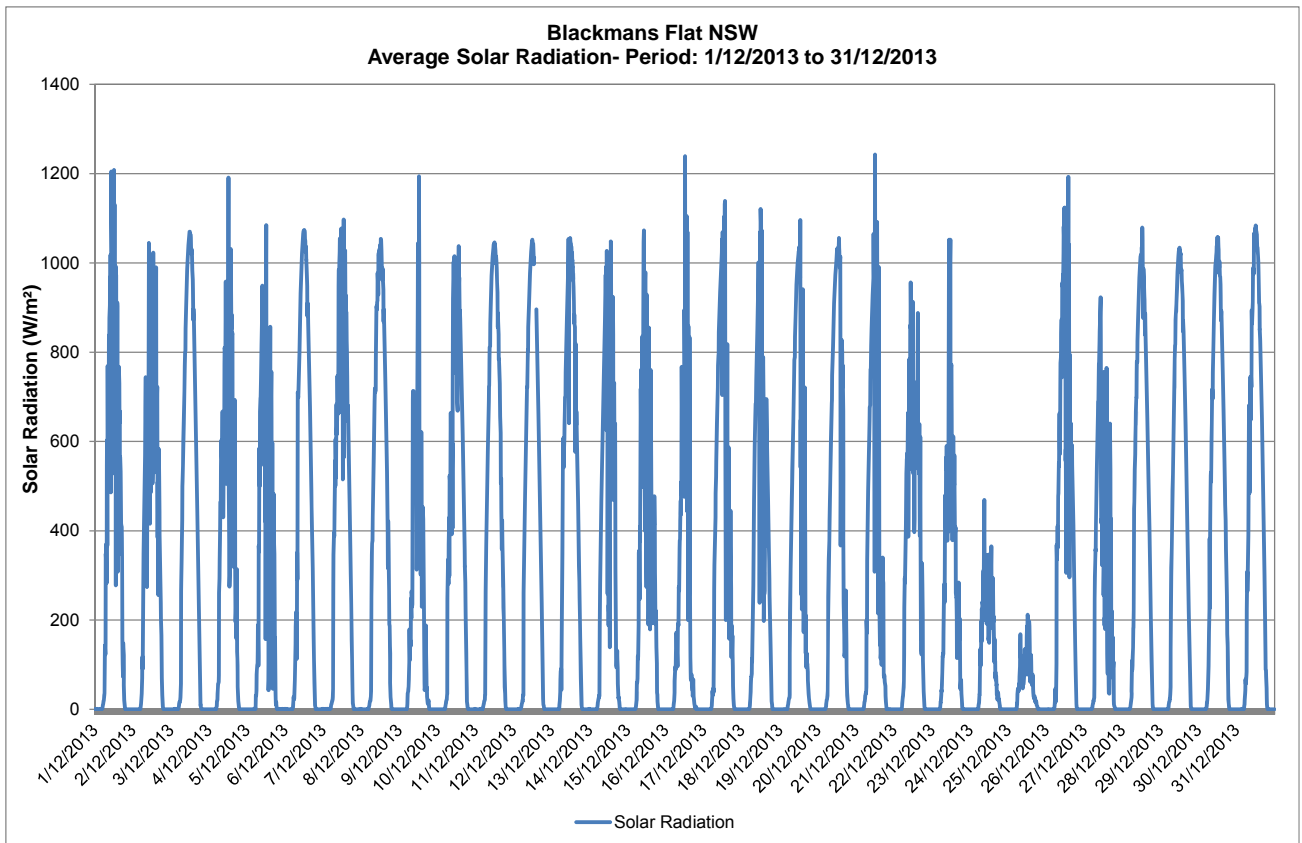


Blackmans Flat NSW
Daily Humidity Variations - Period: 1/12/2013 to 31/12/2013



Blackmans Flat NSW
Sigma Theta Variations - Period: 1/12/2013 to 31/12/2013





Attachment 2 - Lithgow City Council letter

Reference: JKH:AM
Environment & Development Dept.

31 July 2013



The Principal
Wallerawang Primary School
PO Box 21
WALLERAWANG NSW 2845

Dear Sir/Madam

RE: CONTRIBUTIONS FOR SCHOOL FACILITIES AND PRODUCTS

I refer to your letter put forward at the Pine Dale Community Consultative Committee meeting of the 27 June 2013. Unfortunately, the development contributions provided by Pine Dale Mining projects in the past were under the old Section 94 Coal development Contributions Plan (now repealed), which earmarked funds be spent on certain projects within the Lithgow Local Government Area.

This meant that these contributions did not necessarily go towards communities that may be directly affected by the coal mines and were used for major projects such as facility upgrades. Therefore, currently there are no contributions available in this instance in relation to your request.

However, the school may wish to pursue funding directly with Pine Dale Mine separate to the contributions provided as part of the previous project approvals. Additionally, it is suggested that you provide a submission for the school as part of any upcoming Pine Dale Mine extension projects (to the Department of Planning) requesting that contributions be sought and spent on the surrounding community.

It is noted that the current procedures for state significant mining projects, is that Council will request the company to enter into a Voluntary Planning Agreement. As part of such an agreement, Council will endeavour to negotiate some funding for local community initiatives.

Please do not hesitate to contact Miss Jessica Heath who is available between 12:45pm and 2:30pm Monday to Friday on (02) 63549999, in Council's Environment & Development Department should you have any queries in relation to this matter.

Yours sincerely

Mr Andrew Muir
GROUP MANAGER ENVIRONMENT & DEVELOPMENT

(02) 6354 9999
(02) 6351 4259

www.lithgow.nsw.gov.au
council@lithgow.nsw.gov.au

ADDRESS CORRESPONDENCE
TO GENERAL MANAGER
PO BOX 19, LITHGOW NSW 2790