

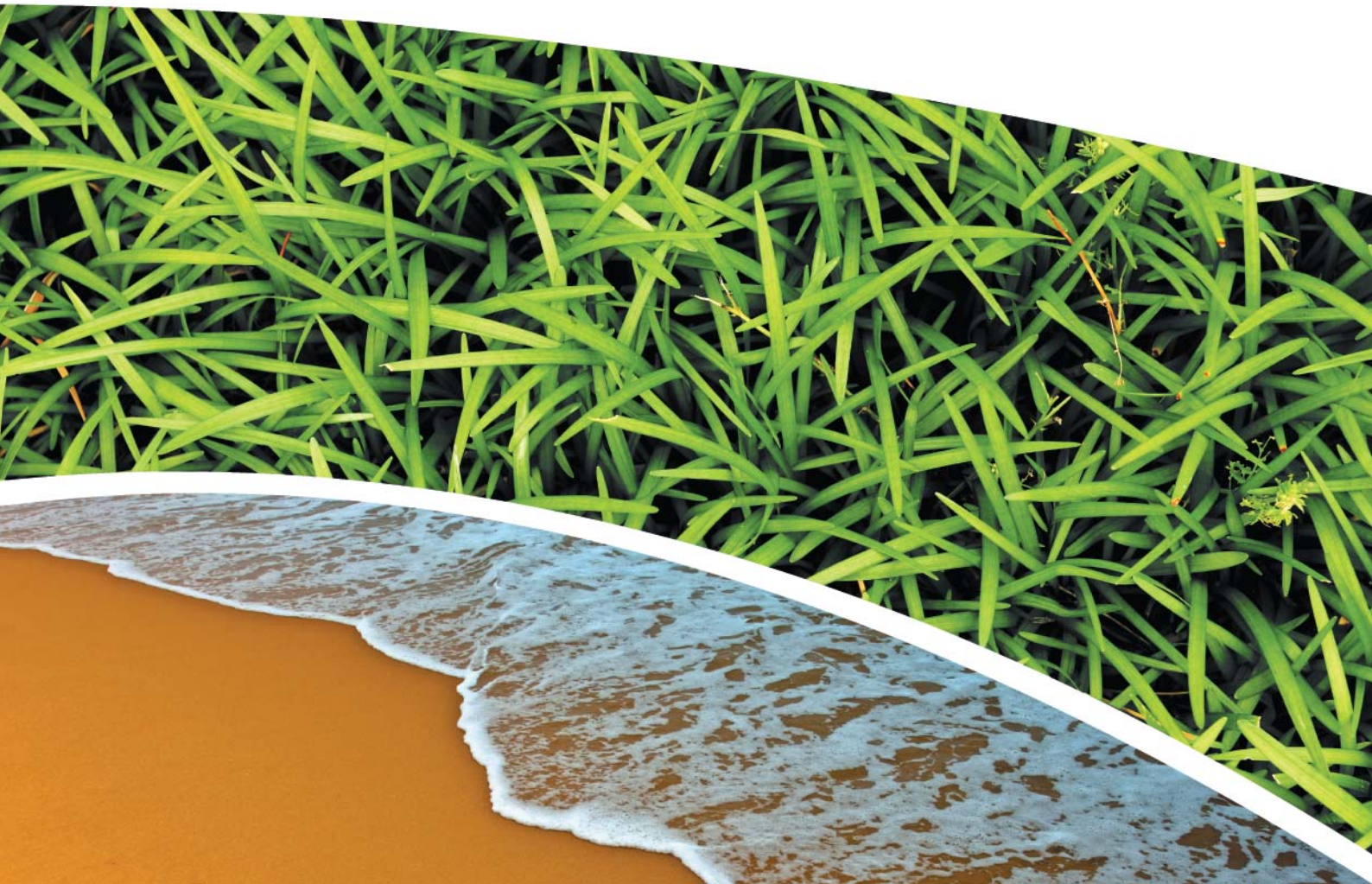
**SURFACE WATER, DEPOSITIONAL DUST,  
HVAS AND METEOROLOGICAL MONITORING**

**Prepared for Pine Dale Mine Community Consultative Committee**

**Prepared by RCA Australia**

**RCA ref 6880-872/0**

**January 2015**



## RCA AUSTRALIA

ABN 53 063 515 711

92 Hill Street, CARRINGTON NSW 2294


Telephone: +61 2 4902 9200

Facsimile: +61 2 4902 9299

Email: [administrator@rca.com.au](mailto:administrator@rca.com.au)

Internet: [www.rca.com.au](http://www.rca.com.au)

This document is and shall remain the property of RCA Australia. The document may only be used for the purpose for which it was commissioned and in accordance with the Terms of Engagement for the commission supplied at the time of proposal. Unauthorised use of this document in any form whatsoever is prohibited.

DOCUMENT STATUS						
Rev No	Comment	Author	Reviewer	Approved for Issue (Project Manager)		
				Name	Signature	Date
/0	Final	C Rocher	K Tripp	K Tripp		16.2.15

DOCUMENT DISTRIBUTION				
Rev No	Copies	Format	Issued to	Date
/0	1	Electronic (email)	Pine Dale Mine – Graham Goodwin <a href="mailto:graham.goodwin@energyaustralia.com.au">graham.goodwin@energyaustralia.com.au</a>	16.2.15
/0	1	Electronic (email)	EnergyAustralia – Tom Hurdley <a href="mailto:tom.hurdley@energyaustralia.com.au">tom.hurdley@energyaustralia.com.au</a>	16.2.15
/0	1	Electronic (email)	EnergyAustralia- Mark Frewin <a href="mailto:mark.frewin@energyaustralia.com.au">mark.frewin@energyaustralia.com.au</a>	16.2.15
/0	1	Electronic (email)	Lithgow City Council – Andrew Muir <a href="mailto:andrew.muir@lithgow.nsw.gov.au">andrew.muir@lithgow.nsw.gov.au</a>	16.2.15
/0	1	Electronic report	RCA – job archive	16.2.15



RCA LE ref 6880-872/0



16 February 2015

Pine Dale Mine  
PO Box 202  
WALLERAWANG NSW 2845

Attention: Mr Graham Goodwin

---

**REPORT COMPILED FOR  
PINE DALE MINE COMMUNITY CONSULTATIVE COMMITTEE  
DETAILING SURFACE WATER, GROUNDWATER DEPOSITIONAL DUST,  
HVAS AND METEOROLOGICAL MONITORING  
JANUARY 2015**

---

## 1 GENERAL COMMENTS

Job Number: 6880.

Date Samples Received: During the month of January 2015

Samples received were sampled by RCA Laboratories – Environmental staff.

This report satisfies the requirements to monitor environmental parameters as presented in the Pine Dale Mine Environmental Protection Licence (EPL 4911).

## 2 ANALYTICAL PROCEDURES

The analytical procedures used by RCA Laboratories – Environmental are based on established internationally recognised procedures such as APHA and Australian Standards. Analytical test methods are detailed in **Table 1**. When an external testing laboratory is used to obtain the analysis of samples which become a part of this report, then the details of that laboratory's official report will be attached in an Appendix.

**Table 1** Analytical Test Methods

ANALYSIS	METHOD	UNITS	ANALYSING LABORATORY	NATA / NON-NATA ANALYSIS
Determination of Suspended Particulate Matter	ENV-LAB003	µg/m <sup>3</sup>	RCA Laboratories – Environmental	NATA Analysis
Determination of Particulate Matter – Deposited Matter	ENV-LAB004	g/m <sup>2</sup> .month	RCA Laboratories – Environmental	NATA Analysis
pH	ENV-LAB006	pH	RCA Laboratories – Environmental	NATA Analysis
Conductivity	ENV-LAB010	µS/cm	RCA Laboratories – Environmental	NATA Analysis
Total Suspended Solids	ENV-LAB009	mg/L	RCA Laboratories – Environmental	NATA Analysis
Turbidity	ENV-LAB037	NTU	RCA Laboratories - Environmental	NATA Analysis
Oil and Grease	ENV-LAB022	mg/L	RCA Laboratories - Environmental	Non-NATA Analysis
Major Anions (Alkalinity, Cl, SO <sub>4</sub> )	ED037, ED041, ED045	mg/L	ALS	NATA Analysis
Major Cations (Ca, Mg, Na, K)	ED093	mg/L	ALS	NATA Analysis
Dissolved Metals	EG020F	mg/L	ALS	NATA Analysis

### 3 WATER MONITORING RESULTS

#### 3.1 GROUNDWATER

A total of 2 on-site groundwater samples were collected during the month of January 2015. Sampling at Bores P2, P3 and P7a are no longer required under the new sampling regime undertaken in accordance with Project Approval (PA 10\_0041) and the Pine Dale Mine Water Management Plan (Report No. 613/20). The new sampling regime commenced 1 August 2013. Water quality analysis results are shown in **Table 2**.

**Table 2** Groundwater Analysis Results

ANALYSIS	UNITS	P6	P7
Sample Number	-	01156880009	01156880010
Date Sampled	-	14/01/15	14/01/15
Time Sampled	-	14:10	15:45
Depth to Water from Surface*	m	25.45	6.44
Water Level (AHD)	m	891.50	887.96
Temperature	°C	16.5	16.5
pH	pH	6.09	6.37
Conductivity	µS/cm	1086	760
Turbidity	NTU	43	
Dissolved Oxygen	mg/L	5.1	
TSS	mg/L	31	
Oil & Grease	mg/L	<2	
Bicarbonate Alkalinity (CaCO <sub>3</sub> )	mg/L	43	
Total Alkalinity (CaCO <sub>3</sub> )	mg/L	43	
Sulfate (as SO <sub>4</sub> )	mg/L	648	
Chloride	mg/L	21	
Calcium	mg/L	123	
Magnesium	mg/L	56	
Sodium	mg/L	48	
Potassium	mg/L	18	
Cobalt (dissolved)	mg/L	0.062	
Manganese (dissolved)	mg/L	2.4	
Nickel (dissolved)	mg/L	0.104	
Zinc (dissolved)	mg/L	0.302	
Iron (dissolved)	mg/L	13.4	

**NOTES:** \*Depth relative to ground level (not standpipe height).

■ Indicates analysis was not required

Groundwater monitoring locations are shown in **Appendix 1**.

#### 3.2 EPA SURFACE WATER MONITORING

Routine quarterly surface waters were not scheduled to be monitored this month. Quarterly surface water monitoring is next scheduled to be undertaken in February 2015.

## 4 AIR QUALITY MONITORING RESULTS

### 4.1 HIGH VOLUME AIR SAMPLERS (HVAS)

HVAS at this facility conform to AS/NZS 3580.9.3:2003, AS/NZS 3580.9.6:2003 and AS/NZS 3580.1.1:2007.

HVAS Total Suspended Particulate analysis results are shown in **Table** .

PM<sub>10</sub> Suspended Particulate Matter results are shown in **Table** .

**Table 3** Total Suspended Particulates ( $\mu\text{g}/\text{m}^3$  0°C 101.3 kPa)

RUN DATE	TSP ( $\mu\text{g}/\text{m}^3$ )	SAMPLE NUMBER	FILTER NUMBER	DATE FILTER OFF	TIME FILTER OFF	FIELD TECH	HOURS RUN
05-Jan-15	9	01156880029	9091939	07-Jan-15	9:45	Client	24.00
11-Jan-15	6	01156880031	9091940	13-Jan-15	16:20	Client	24.00
17-Jan-15	41	01156880033	9091942	20-Jan-15	8:52	Client	24.24
23-Jan-15	21	01156880035	9091944	26-Jan-15	8:57	Client	24.00
29-Jan-15	10	01156880037	8901761	02-Feb-15	10:05	Client	24.00

**Table 4** Suspended Particulate Matter PM<sub>10</sub> ( $\mu\text{g}/\text{m}^3$  0°C 101.3 kPa)

RUN DATE	PM <sub>10</sub> ( $\mu\text{g}/\text{m}^3$ )	SAMPLE NUMBER	FILTER NUMBER	DATE FILTER OFF	TIME FILTER OFF	FIELD TECH	HOURS RUN
05-Jan-15	7	01156880030	9091938	07-Jan-15	9:48	Client	24.00
11-Jan-15	4	01156880032	9091941	13-Jan-15	16:25	Client	24.00
17-Jan-15	17	01156880034	9091943	20-Jan-15	8:55	Client	24.16
23-Jan-15	14	01156880036	9091945	26-Jan-15	9:00	Client	24.00
29-Jan-15	4	01156880038	8901762	02-Feb-15	10:09	Client	24.00

#### 4.1.1 TSP Summary

The EPA Annual Mean TSP allowable limit is  $90\mu\text{g}/\text{m}^3$ . All TSP HVAS results recorded during this monitoring period are in compliance with consent conditions, as the *current rolling annual mean* (from February 2014 to January 2015) for the TSP unit is  $19.1\mu\text{g}/\text{m}^3$ , which is well below the allowable limit of  $90\mu\text{g}/\text{m}^3$ .

#### 4.1.2 PM<sub>10</sub> Summary

The EPA 24h Maximum PM<sub>10</sub> allowable limit is  $50\mu\text{g}/\text{m}^3$ . The EPA Annual Mean PM<sub>10</sub> allowable limit is  $30\mu\text{g}/\text{m}^3$ . All PM<sub>10</sub> HVAS results recorded during this monitoring period conform to consent conditions, as the *current rolling annual mean* for the PM<sub>10</sub> unit is  $8.9\mu\text{g}/\text{m}^3$ , which is below the allowable limit of  $30\mu\text{g}/\text{m}^3$ . The 24 hour maximum allowable limit of  $50\mu\text{g}/\text{m}^3$  was not exceeded during the month of January 2015.

#### 4.1.3 Comments

HVAS monitoring locations are shown in **Appendix 1**.

Graphical HVAS results presentations are shown in **Appendix 2**.

## 4.2 DEPOSITIONAL DUST

Depositional Dust Gauges at this facility conform to AS/NZS 3580.10.1:2003 and AS/NZS 3580.1.1:2007. Depositional Dust monitoring results are shown in **Table** .

**Table 5** *Depositional Dust Monitoring - Deposited Matter January 2015*

SAMPLE NUMBER	DEPOSIT GAUGE	DATE SAMPLE STARTED	DATE SAMPLE COMPLETED	NUMBER OF DAYS	NOTES	INSOLUBLE SOLIDS (g/m <sup>2</sup> .month)	ASH (g/m <sup>2</sup> .month)	COMBUSTIBLE MATTER (g/m <sup>2</sup> .month)
01156880019	D1	16/12/14	14/01/15	29	I	1.1	0.6	0.5
01156880020	D2	16/12/14	14/01/15	29	I	0.8	0.4	0.4
01156880021	D3	16/12/14	14/01/15	29	I	1.2	0.7	0.5
01156880022	D4	16/12/14	14/01/15	29	I	1.0	0.4	0.6
01156880023	D5	16/12/14	14/01/15	29	IT	1.2	0.6	0.6
01156880024	D6	16/12/14	14/01/15	29	BI	2.9	2.1	0.8

### 4.2.1 Glossary of Terms Used in Notes

I	Insects (eg, Ants, spiders)	IT	Insects (eg, Ants, spiders) and Tree litter
BI	Insects (eg, Ants, spiders) and Bird Droppings		

### 4.2.2 Allowable Depositional Dust Limits

The EPA Long Term (Annual Average) Dust Limit is 4g/m<sup>2</sup> per month. All Depositional Dust results during this monitoring period are in compliance with consent conditions. The Annual Average for Dust Gauges D1, D2, D3, D4, D5 and D6 are all less than or equal to 0.9g/m<sup>2</sup> per month, which is below the allowable Annual Average Long Term Limit of 4g/m<sup>2</sup> per month.

Depositional Dust monitoring locations are shown in **Appendix 1**. Graphical Depositional Dust results are shown in **Appendix 2**.

---

## 5 BLASTING RESULTS

No blasting was undertaken during this month as mining operations have ceased since the end of March 2014.

## 6 NOISE MONITORING RESULTS

Routine quarterly noise monitoring was not undertaken this month. Routine quarterly noise monitoring is next scheduled for March 2015.

## 7 OPERATIONAL ACTIVITIES

All of the approved minable reserves at the Pine Dale Mine have now been exhausted. Operational mining and the last coal sales ceased as of the end of March 2014.

All former operators have been made redundant; however some statutory positions still remain. Pine Dale Mine has been placed in care and maintenance since May 2014.

## 8 SUMMARY

During the month of January 2015 all environmental monitoring constituents were found to be in compliance with EPL 4911.

Rolling annual averages from both the TSP and PM<sub>10</sub> High Volume Air Samplers are currently well below the EPA Annual Mean TSP and PM<sub>10</sub> criterion of 90µg/m<sup>3</sup> and 30µg/m<sup>3</sup> respectively.

Currently there are no depositional dust gauge results which are greater than the EPA Long Term (annual average) criteria of 4g/m<sup>2</sup>.month based upon a rolling average of the past 12 months.

Pine Dale Mine ceased operation in March 2014 and therefore no blasting occurred at the site.

*This report must not be reproduced except in full. Results or figures from this report must not be used without acknowledgment.*

Please contact the undersigned if you have any queries.

Yours sincerely



Carmen Rocher  
Environmental Engineer  
RCA Australia Pty Ltd trading as  
RCA Laboratories – Environmental



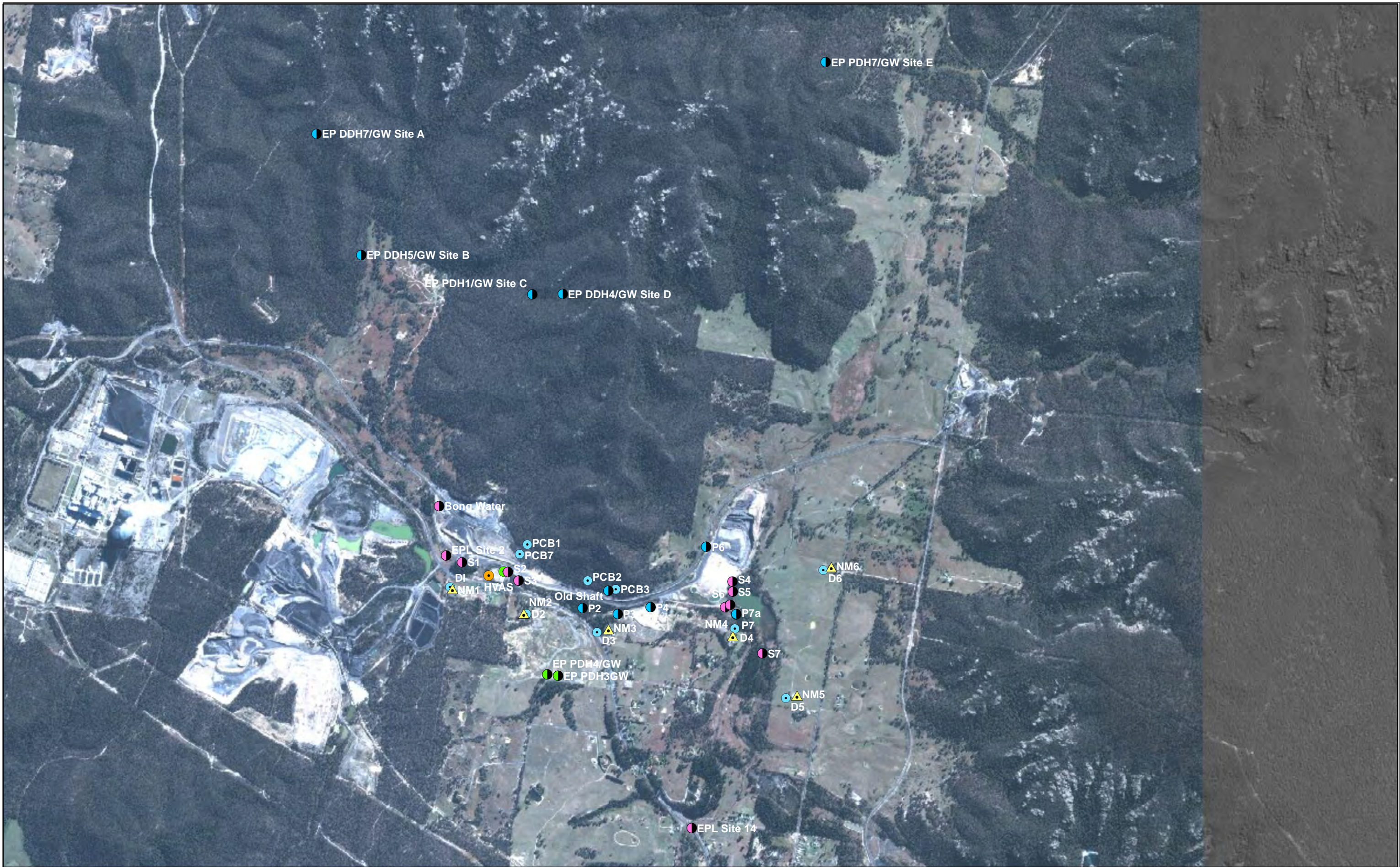
Karen Tripp  
Senior Environmental Scientist/Hygienist  
RCA Australia Pty Ltd trading as  
RCA Laboratories – Environmental










# Appendix 1

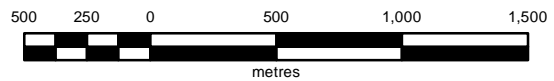
---

## Surface Water Groundwater and Air Quality Monitoring Locations



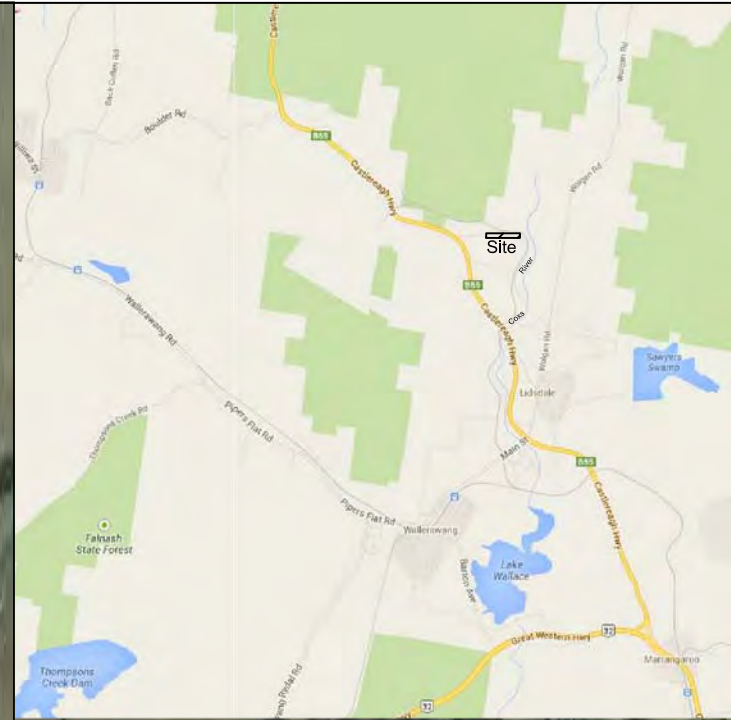
**Legend**

-  Noise Monitoring Location
-  Depositional Dust Monitoring Location
-  Enhance Groundwater Monitoring Location
-  Groundwater Monitoring Location
-  High Volume Air Sampling Location
-  Meteorological Monitoring Location
-  Surface Water Monitoring Location



**PINE DALE MINE  
ENVIRONMENTAL MONITORING LOCATIONS**

CLIENT	Pine Dale Mine	PROJECT No	6880-870a/010
DRAWN BY	KT	SCALE	1:30,000 (A3)
APPROVED BY	KT	DATE	10/02/2015
		DRAWING No	1
		OFFICE	NEWCASTLE



Locality Plan  
N.T.S.

Mine Office

SH1  
Clean Water Diversion

SH2

SH4

SH3 SH3a  
LDP13

SH5

- LEGEND
- Monitoring location
  - Licence discharge point location
  - Clean water diversion location



Aerial image taken from Google Earth, 23 May 2006



LOCATION PLAN OF  
CHANNEL STABILITY, STREAM AND  
VEGETATIVE HEALTH OF  
NEUBECKS CREEK MONITORING SITES

CLIENT	Pine Dale Mine	RCA Ref	6880-870a/010
DRAWN BY	KS	SCALE	1 : 5000 (A3)
APPROVED BY	KT	DATE	10/2/2015
		DRAWING No	2
		REV	0
		OFFICE	NEWCASTLE

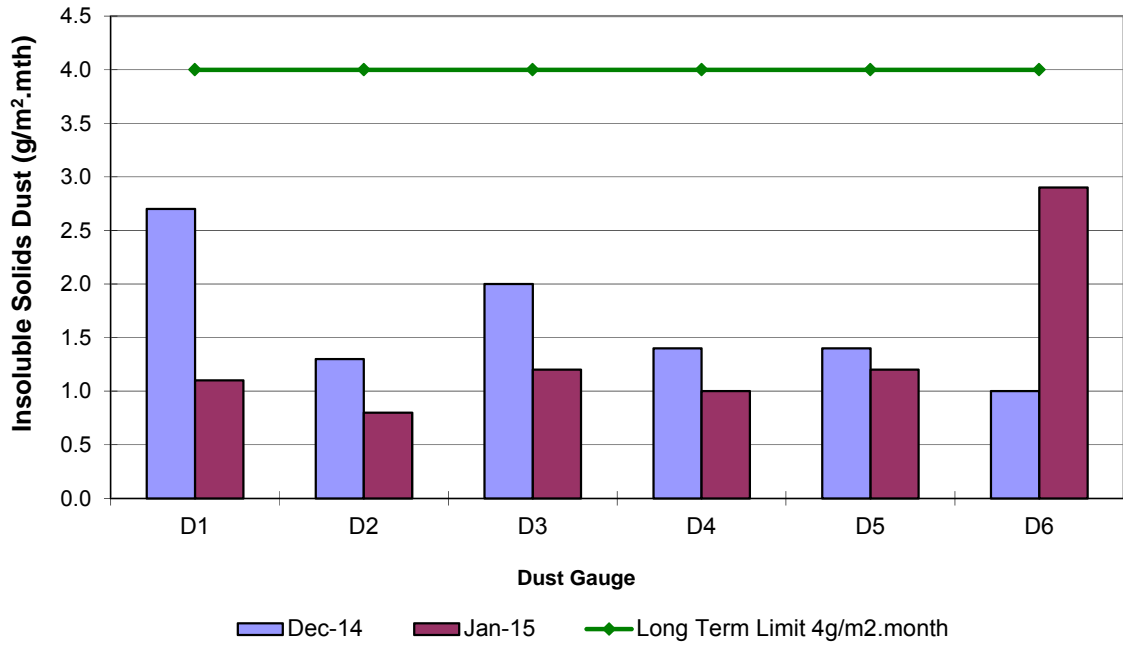
CDT-DWG-A3H-001/1

# Appendix 2

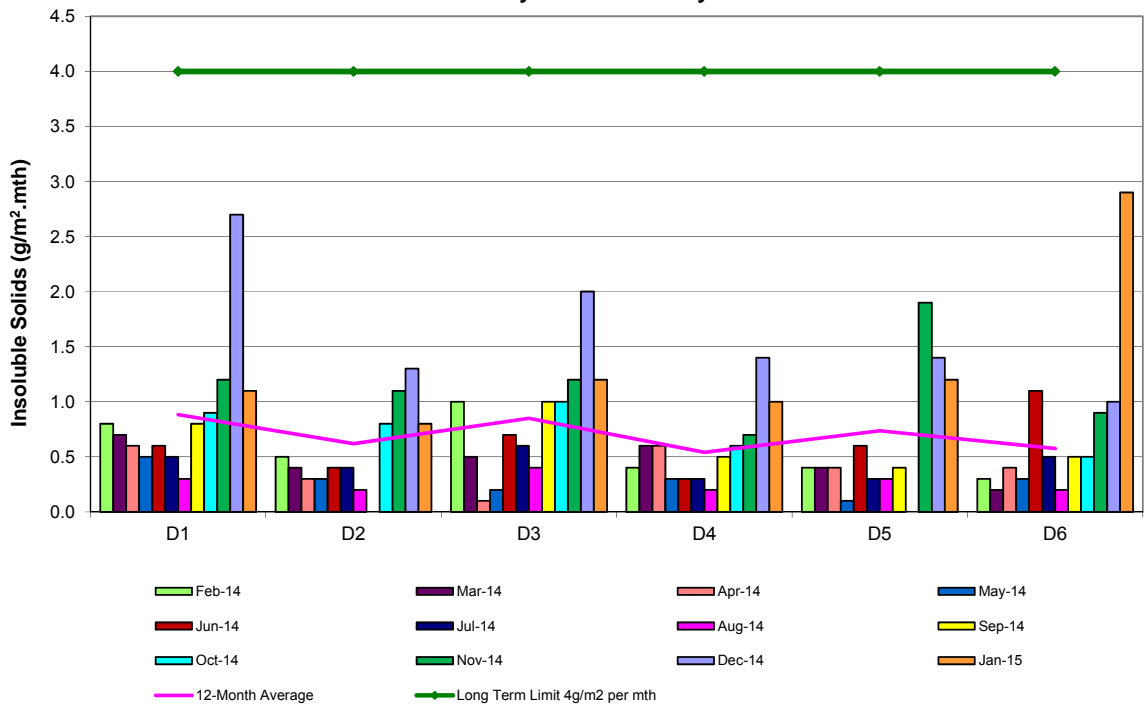
---

Depositional Dust and HVAS Graphs

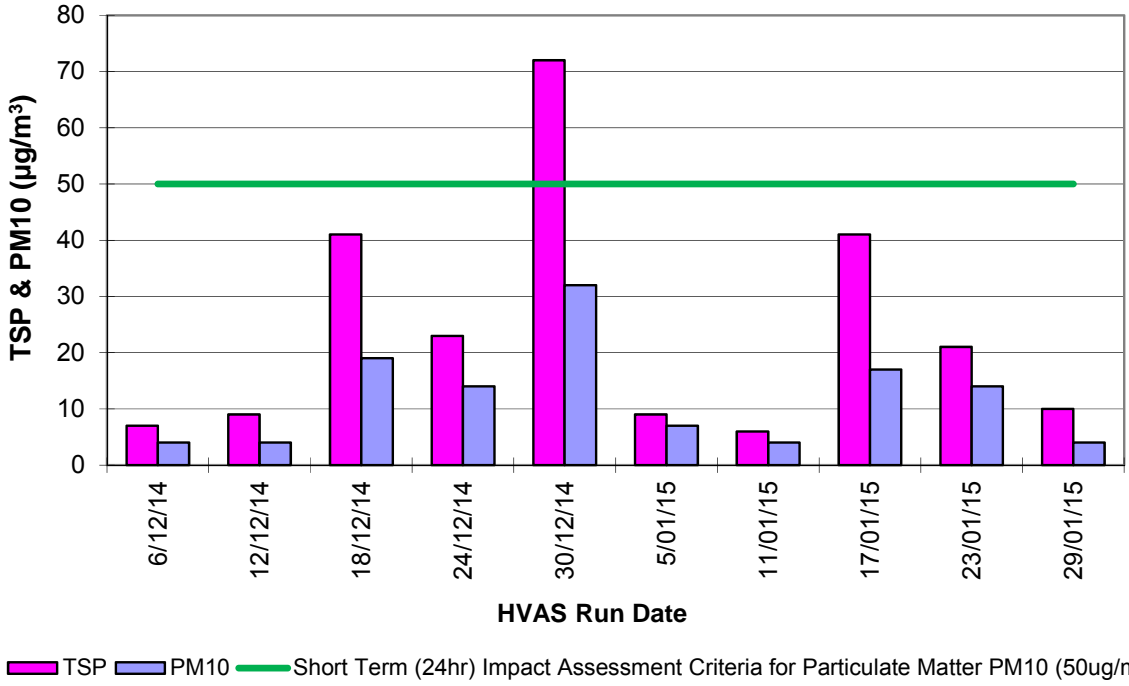
**Pine Dale Mine  
Depositional Dust Gauge Comparative Results  
December 2014 to January 2015**



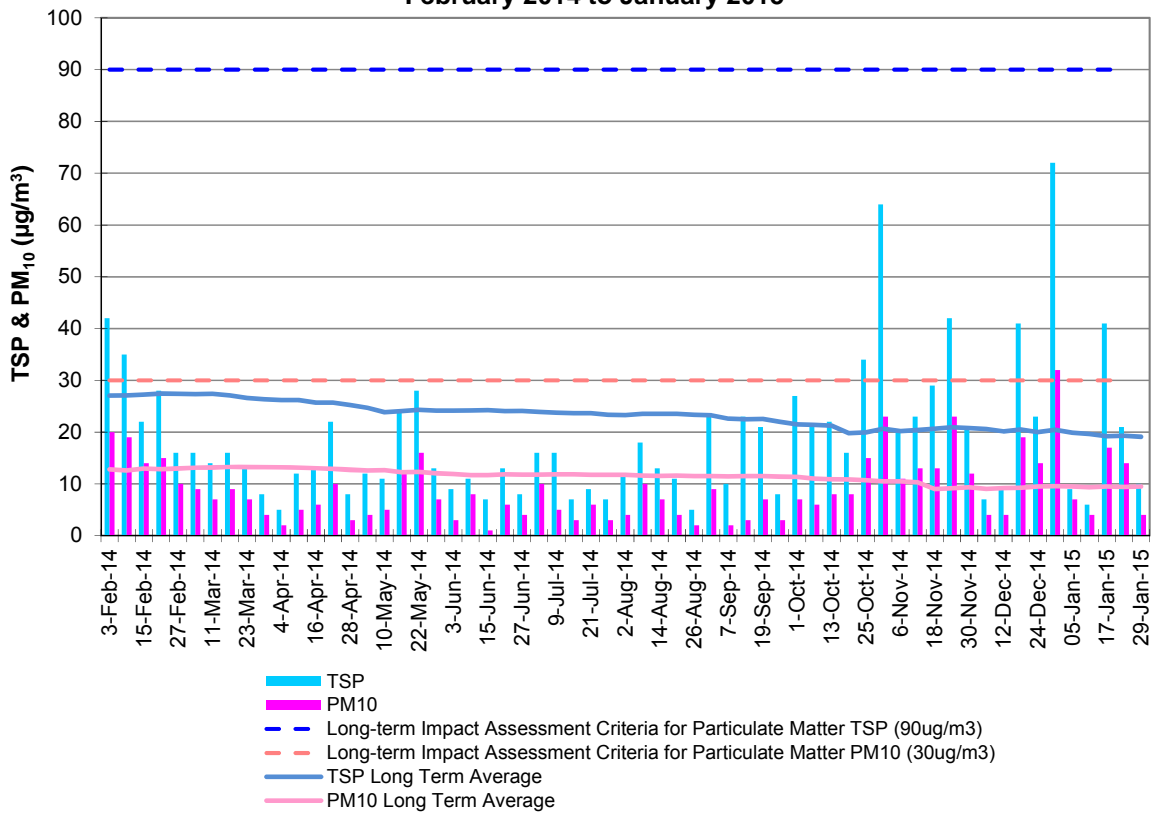
**Pine Dale Mine  
Deposited Matter - Insoluble Solids 12 Months Comparative Results  
February 2014 to January 2015**



### Pine Dale Mine TSP & PM<sub>10</sub> Results December 2014 to January 2015



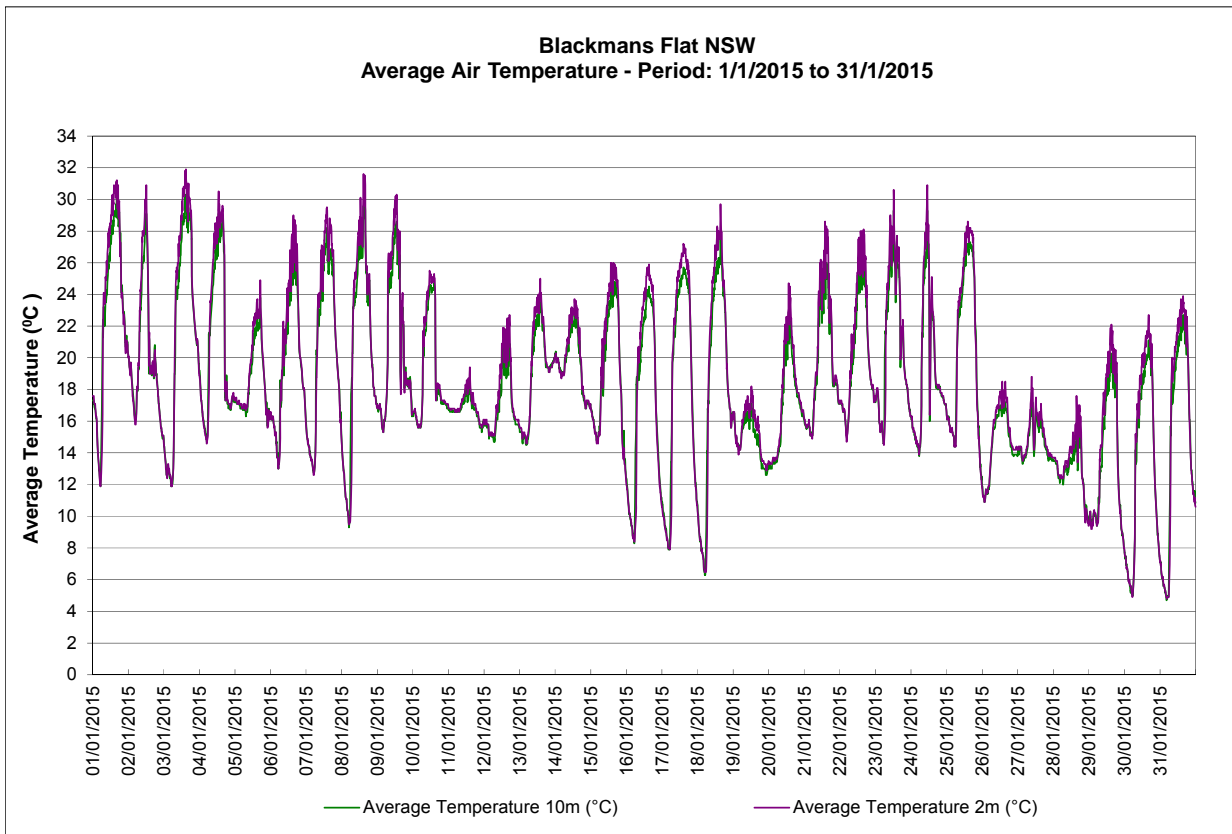
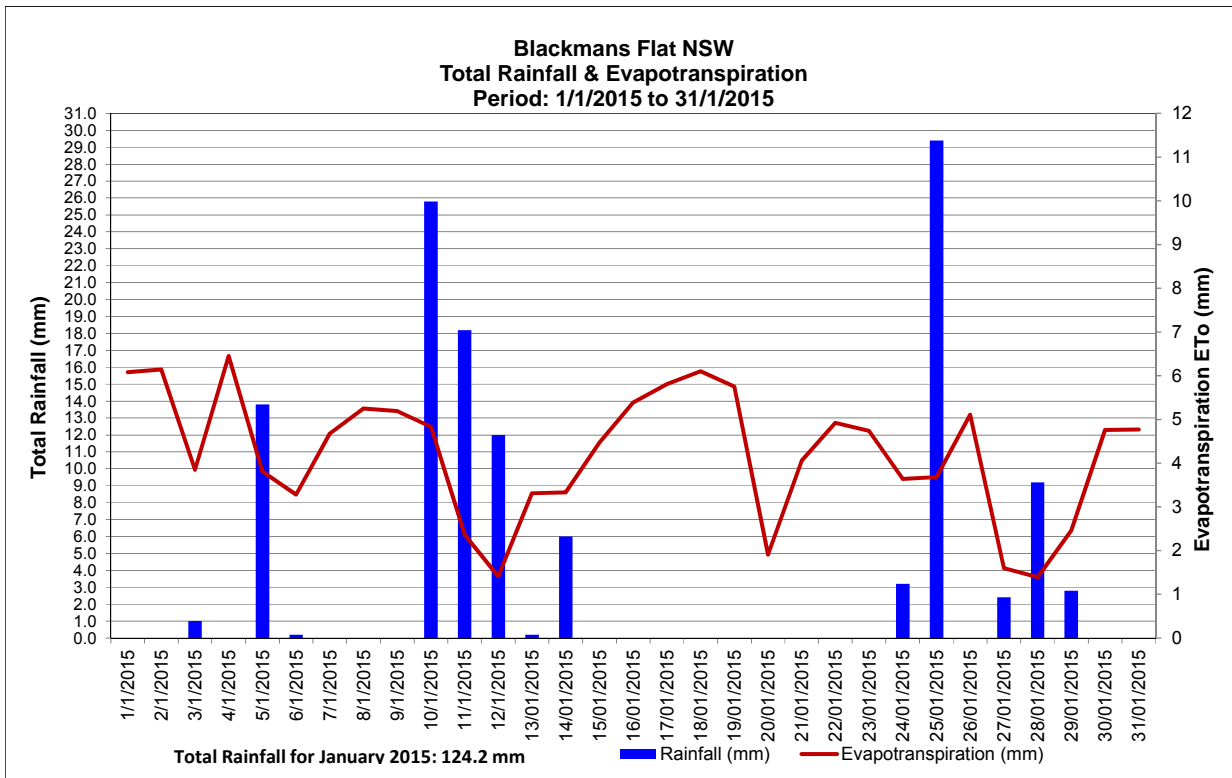
### Pine Dale Mine TSP & PM<sub>10</sub> HVAS 12-Month Comparative Results February 2014 to January 2015



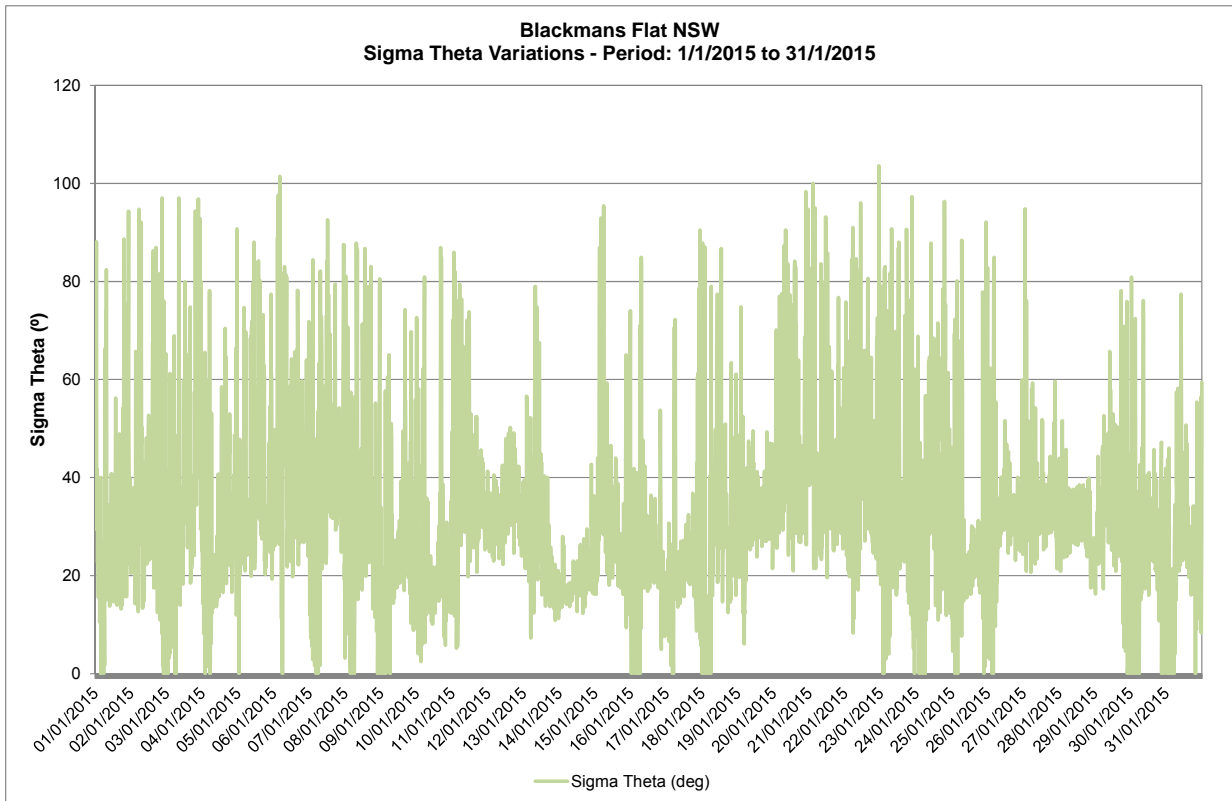
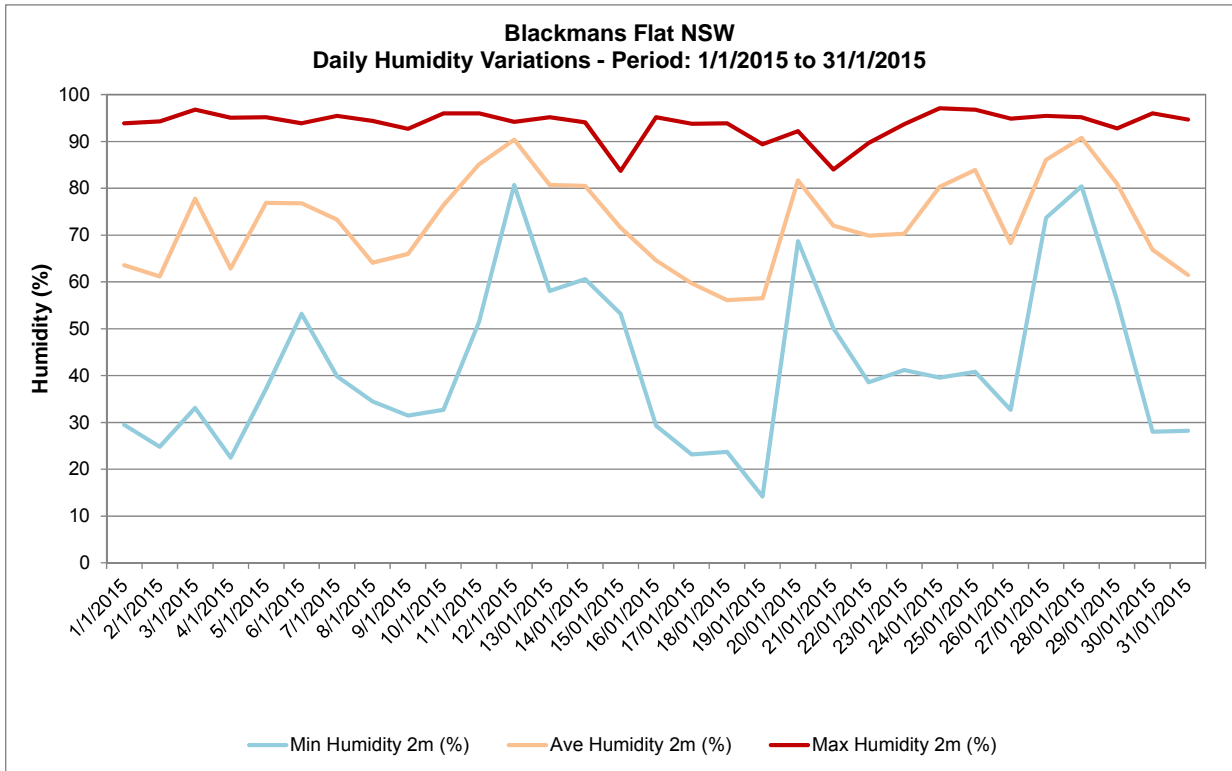
# Appendix 3

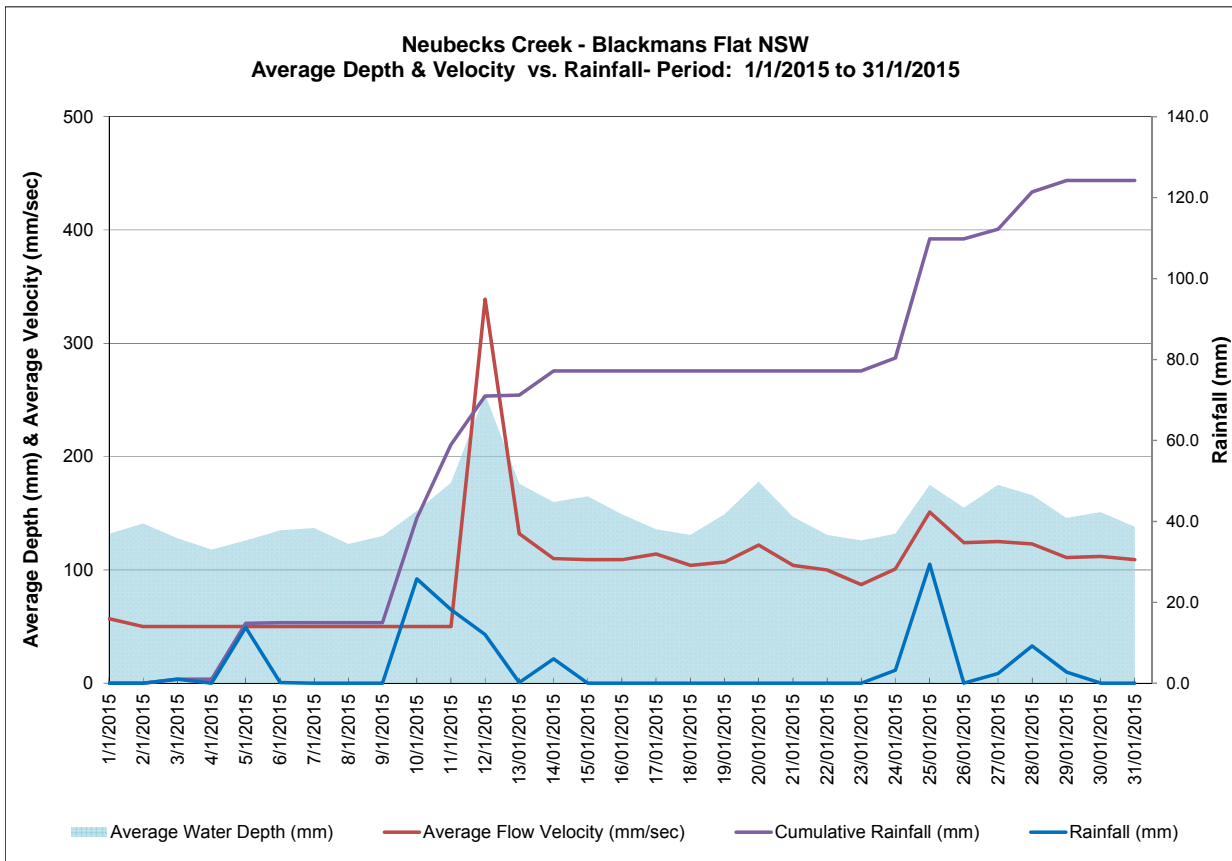
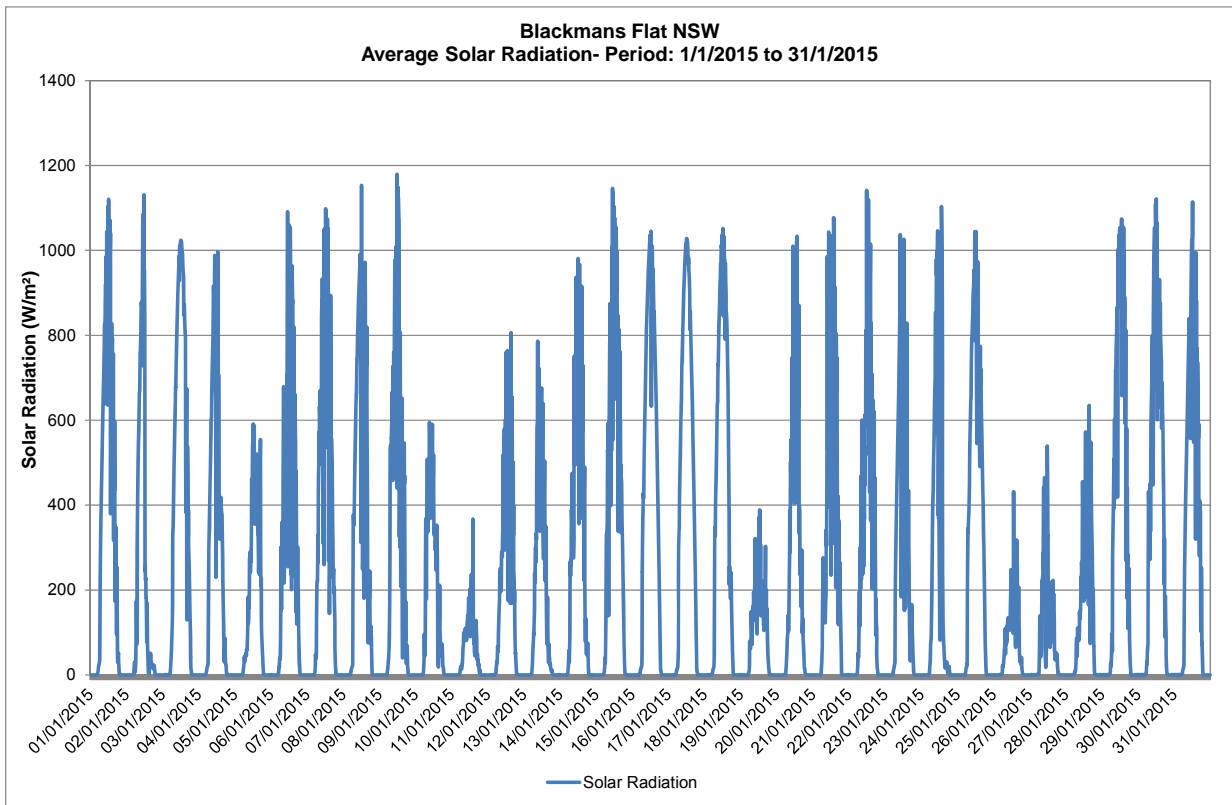
---

Meteorological Data



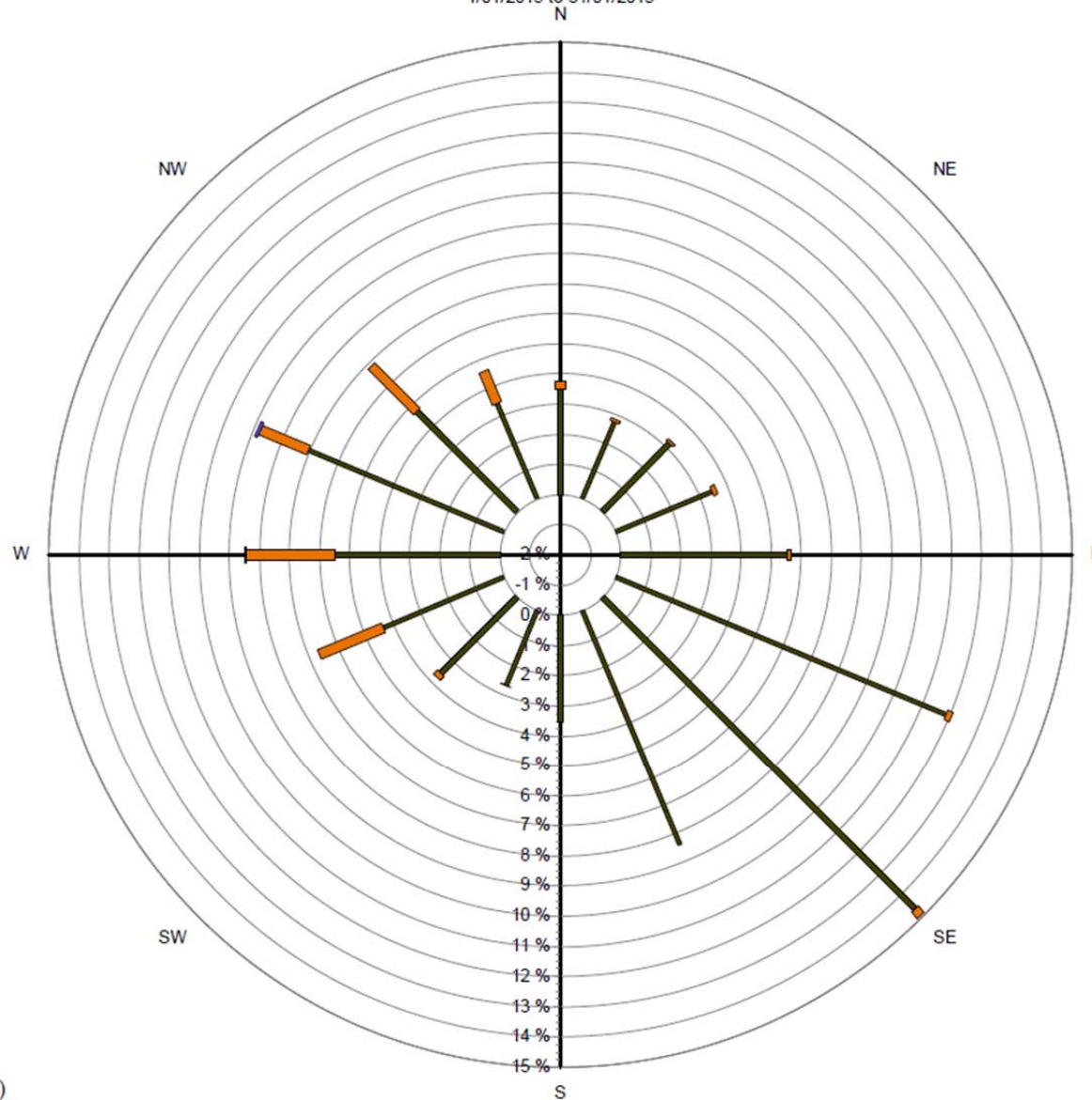
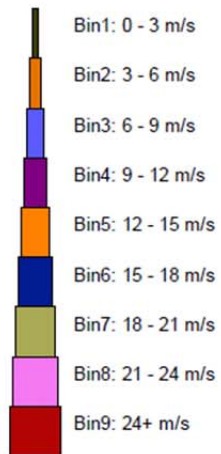






### Blackmans Flat Windrose

1/01/2015 to 31/01/2015



Source data:  
Metford.SCM  
10 minutely data - Ave WndDir (deg)  
10 minutely data - Ave WindSpd (m/sec)