

# Meeting Minutes



## EnergyAustralia - Lithgow Community Consultative Committee

<b>Project</b>	Lithgow Community Consultative Committee	<b>Date</b>	1 March 2021
<b>Chair</b>	Brendan Blakeley, Elton Consulting	<b>Recorder</b>	Ella Burgess, Elton Consulting
<b>Venue</b>	Mount Piper Power Station	<b>Time</b>	5:00pm - 7:00pm
<b>Attendees</b>	Julie Favell, CCC member Robert Cluff, CCC member Jim Whitty, CCC member Greg McIntyre, EnergyAustralia Ben Eastwood EnergyAustralia Michelle Blakey, EnergyAustralia Mick Hanly, EnergyAustralia	<b>Apologies</b>	Jill Cusack, CCC member Clr Joe Smith, CCC member Aunty Helen Riley, CCC member Lauren Stevens, Lithgow Council Alex Preema, CCC member Jamie Giokaris, CCC member

Item	Discussion Point
1.	<b>Welcome and introductions</b> <ul style="list-style-type: none"><li>» The meeting commenced at 5:10pm.</li><li>» The Chair acknowledged the Wiradjuri people as the traditional custodians of the land and paid respects to Elders past, present and emerging.</li><li>» The Chair welcomed all participants and noted apologies.</li><li>» The Chair made note that the Wallerawang project is now being operated by Greenspot and is no longer under this CCC.</li></ul>
2.	<b>Review of notes from previous meeting</b> <ul style="list-style-type: none"><li>» The Chair called for comments on the previous meeting minutes.</li><li>» There were no additional comments noted. The meeting notes were adopted.</li></ul> <p><u>Answers to questions/actions arising from December 2020 meeting:</u></p> <p><i>A- Groundwater Interception Project- CCC to be provided with a link to the REF and details of public exhibition, when available.</i></p> <ul style="list-style-type: none"><li>» The link to the REF documentation will be provided when exhibition date is known.</li></ul> <p><i>A- Response on Lithgow Community Power Projects report- Greg to provide further detailed response to the query in the next CCC meeting.</i></p> <ul style="list-style-type: none"><li>» There is no further response.</li><li>» Across the entire portfolio EnergyAustralia is always looking at ways to increase efficiency and environmental performance of operations.</li></ul> <p><i>A- Provide status of the pine trees.</i></p> <ul style="list-style-type: none"><li>» There is no additional update available.</li></ul> <p><i>A- Michelle will contact Jim and Julie and arrange a site visit to determine the exact location of areas and issues being raised.</i></p>

- 
- A- Michelle to confirm the number of applicants for the apprenticeship program
- » 72 applications were received for the mechanical and electrical apprenticeships.
- 

### 3. **Site Update**

- » Greg and Ben provided a general site update, covering a range of topics.

#### Site safety

- » Greg noted that there has been one incident since January following the major outage.
  - > The single incident involved a contractor, slipping off a step onto a piece of coal and rolling his ankle.
  - > By the end of 2020, there was a successful outage period with no reported injuries.
  - > Greg noted that three minor incidents occurred.
  - > EnergyAustralia are reinvigorating their safety program, focussing on error reduction rather than Protective Personal Equipment.
  - > During 2020, EnergyAustralia initiated a focus toward changing behavioural attitudes toward safety such as implementing a personality profile to determine what makes people make mistakes.
  - > Refer to slides 7, 8 and 9 of the presentation for a graphical representation of site safety and the total injuries in both 2020 and 2021 to date.

*CCC member: Expressed support for the program, noting that prevention is better than cure.*

#### **Water Management**

- » Ben gave an update on water management.
- » Oberon Dam level is at 32.14% which is slightly lower than the last meeting in December.
- » Total Active Storage is at 95.0% and is made up of:
  - > Lake Lyell at 96.7%
  - > Lake Wallace at 105.3%
  - > Thompsons Creek Dam at 92.2%
- » There has been no alert for blue-green algae within Lake Lyell and Lake Wallace.
  - > Refer to slide 11 of the presentation for storage levels.

#### **Market Update**

- » Greg provided a market update.

#### Operation in the Market

- » Peak demands are still sitting at their usual rates, at times slightly lower.
- » Average demand has been dropping.
- » The result has created lower volume but more requirement to support during peak times.
- » Refer to slide 13 of the presentation for a graphical representation of the 12-month rolling average demand.

#### The Market

---

- 
- » The entire national electricity market is seeing the average demand for electricity reduce due to the penetration of roof top solar which acts as the generator during the middle of the day.

*CCC member: Clarified if this means that people are using less electricity.*

- » Greg explained that the average demand for electricity has dropped due to an increasing amount of people relying on solar, not the network. The data shown on the graph displays energy demand from coal.
- » Refer to slide 14 of the presentation for a graphical representation of the demand for energy from coal.

*CCC member: Asked how much of an issue that increased reliance on solar causes the grid.*

- » Greg noted that it is not a huge issue for Mt Piper at the moment but has the potential to be in the future. There are fixes EnergyAustralia are looking into such as batteries that are being built as back up for solar and wind power

*CCC member: Asked if there are any problems for Mt Piper when it needs to operate at the minimum level of usage?*

- » Greg answered that there is unease surrounding Mt Piper's reliability when it must operate at a very minimal output. EnergyAustralia are putting a lot of effort into managing the power plant's ability to be able to ramp up at certain times of day such as at 4:30pm to support the network during peak periods.

*CCC member: Commented that there is concern for the future with more and more solar. The impact of this will create an imbalance in the grid and that will have a socio-eco imbalance too. There isn't the money in coal as there was. It's an issue for the owners of coal fired generation. Coal is needed when it's needed to prop everything up when renewables fail but otherwise not.*

- » Greg noted that there is not a complete solution yet, but EnergyAustralia like other generators is in regular communication with market operator, AEMO, to look at how coal-fired and renewable inputs are reliably coordinated throughout this transition.

*CCC member: Asked if there is a requirement of several years' notice that EnergyAustralia must give the Government if they were to shut down.*

- » Greg clarified that the requirement for notice is relatively short but given the recent investment in the station this isn't something being considered by EnergyAustralia across the short to medium term. The Liddell station operated by AGL is slated to close quite soon and Mt Piper will be needed to fill the gap in baseload power for a while yet.

*CCC member: Asked what percentage of NSW currently operates on renewable energy.*

- » Greg answered that 30% of NSW energy is renewable.

*CCC member: Questioned what renewable projects were on site at Mt Piper.*

- » Greg confirmed that there are a number of projects currently in progress across the portfolio, including a potential battery on site.

#### Operations Site Update

- » Greg gave an update of various operations across the Mt Piper site.

#### » Mount Piper Unit 1

- > Unit 1 was a success and finished on the 20<sup>th</sup> of December with the new unit and overhaul of the boiler.
-

- 
- > There was an 86-day outage. 1,000 people were employed to be working on Unit 1.
  - > Mt Piper was able to operate from 1 January 2021. It was noted that the contractors were some of the best to ever work at the site.

*CCC member: Commented on the good behaviour of the contractors during their stay in the town.*

- » Mount Piper Unit 2
  - > Unit 2 is in service and available for the market.
  - > The Unit 2 outage is planned for 2 September.
- » Fuel Supply
  - > Springvale is still operating with a lower horizon for the roof to increase stability and reduce contamination.
  - > In January and February 2020, there were roof stability issues which are believed to have passed.
  - > The quality of the coal is still generally good. During February there was some reliance on stockpiled coal.

*CCC member: Asked if EnergyAustralia have been receiving coal from Airly and what the quality of the coal was like.*

- » Greg confirmed they have been receiving coal from Airly. In February, Energy Australia received 45,000 tonnes of coal from Airly and the quality was good.
- » Water Treatment Plant
  - > Operation is going well and throughput is as expected.
- » Outputs
  - > Generation was slightly down but Mt Piper was not requested to support the grid.
  - > Availability was also slightly lower than expected.
- » The Future
  - > There have been 5 applications for coal supply tenders which close next month.

*CCC member: Questioned what the next steps for the tender process will be.*

- » Greg outlined that the applications are being assessed from a cost and technical perspective. They will be set against the coal supply tenders and what the local suppliers can offer. Energy Australia will choose what is the best and most efficient way for a significant period of time.

*CCC member: Asked what the overall average amount of coal needed for the power station is.*

- » Greg answered 2.7 million tonnes which is about 10% lower than previous years.
- 

#### 4. **Lamberts North Ash Placement Project**

- » Ben gave an update on the Lamberts North Ash Placement Project
  - > There has been no Water Conditioned Ash to Lamberts North

*CCC member: Asked if Lamberts North is where all the ash is deposited.*

- » Ben answered that EnergyAustralia have two ash repositories in the area, one at Mt Piper and the second at Lamberts North which are adjacent each other.
-

- 
- » Ben noted that EnergyAustralia are preparing a modification application to the Lamberts North ash repository. They are planning to install a HDPE liner on Lamberts North to take brine conditioned ash but to avoid the leaching that has occurred at Mt Piper from the placement of brine conditioned ash.

The Chair questioned if all the technical studies had been done for the EIS submission.

- » Ben noted that the addition of the liner will be a very minor change to the currently approved activities but will create significant environmental improvements and benefits. Some minor supporting technical studies will be submitted as part of the EIS that supports the application.
  - > The benefits of the HDPE liner will include a reduction in the volume needed for brine placement, as a result creating more ash to be sold for recycling, extend the longevity of the ash repository and stop leachate from the repository.

*CCC member: Questioned if the amount of ash going out had increased.*

- » Ben explained that there is an excess of brine and water to dispose of with coal ash. A key goal in 2021 is to optimise the brine treatment rather than having to dispose of the brine in the ash. As a result, Energy Australia can look at ways to sell more ash to be recycled.

#### **Lamberts North Ash Placement Project: MOD 1**

- » Ben went into further detail about the proposed modification to Lamberts North.
  - > Refer to slide 20 of the presentation for an outline of the proposed modification.
  - > Installation of a liner to encapsulate the Brine Conditioned Ash (BCA) and Solid Mixed Salts within the currently approved LNAR.

*CCC member: Asked what the area size of the liner will be.*

- » Ben answered the whole of the Lamberts North area will be lined, depending on the volume of salts being deposited.

The Chair called for any questions.

- » Ben commented that they are hoping for a speedy assessment process because they are needing to dispose of the brine. It will be a big and positive improvement.

*CCC member: Noted that it was a move in the right direction for the project.*

- » Ben outlined the justification, needs and objectives for the modification
  - > The key to the project is to protect the ground water. The team are currently doing whatever possible to protect any potential impacts to ground water.
  - > Refer to slide 23 for a table of the justifications, need and objectives of the modification.

*CCC member: Commented that EnergyAustralia's ability to protect ground water requires regular monitoring.*

- » Ben confirmed that regular monitoring is undertaken and with the the ground water interception bores that have recently been installed, will provide even better groundwater monitoring opportunities and continuous monitoring capability.

*CCC member: Stated that that effective monitoring would be a good move forward, things can go wrong if there is too long an interval between sampling events and by then the damage is done.*

**ACTION:** EnergyAustralia to provide the CCC with a groundwater monitoring process review.

---

- 
- » Ben outlined the proposed planning pathway and assessment.
    - > Refer to slide 24 of the presentation for a summary of the proposed planning pathway and assessment.
    - > It is expected there will be minimal change to Lamberts North, but this has not yet been confirmed.
    - > EnergyAustralia are planning to lodge the modification application in April 2021.
    - > Refer to slide 25 of the presentation for an indicative timeline of the proposed modification.
- 

## 5. **Mount Piper Compliance Reports**

- » Ben gave an overview of the Mt Piper Compliance Reports submitted to the EPA
  - > Modification to the licence in July last year, imposed a number of different expectations and additional submissions which included:
    - > A Dioxin and Furan Study
    - > A Site Specific Air Emissions Monitoring Plan
    - > A Continuous Emissions Monitoring System Quality Assurance and Control Procedure
    - > An Air Pollution Control Equipment- Maintenance, Operation and Fault Response Procedure.
  - > There are further compliance report needing to be submitted to the EPA before the next CCC meeting including:
    - > The Mt Piper Annual Return
    - > The Annual Air Emission Monitoring Report
    - > The National Pollutant Inventory Report
    - > A Delivery Plan for Particulate Matter CEMS
    - > Note: CEMS includes what is involved in maintaining equipment and how they protect the ducts.

*CCC member: asked if there is a requirement to replace the ash filters.*

- » Greg explained that there is a whole maintenance program for the filter bags.

*CCC member: questioned where the filter bags are disposed of and if they are analysed.*

- » Ben answered that they are disposed of in the ash repository. The filter doesn't filter out or collect chemicals, it only filters out ash. The filter is designed to remove ash particles to a certain size and after time the bags deteriorate due to heat.
  - » There were two reports of non-compliance reported in the Annual Return relating to not including 10 additional analytes following the licence variation in July and a small brine waste water spill incident.
  - » Ben noted that the annual return is available on the Mt Piper website and the Annual Air Emission Monitoring will be available to give assurance that the data of the reports submitted is accurate.
- 

## 6. **Pine Dale and Enhance Place Update**

- » Ben explained that both the Pine Dale and Enhance Place Annual Environmental Management Reports have been submitted.
-

- 
- > Refer to slide 29 of the presentation.
  - > Pine Dale recorded one non-compliance relating to an inability to access bores for groundwater monitoring due to bushfires.
  - > Pine Dale EPL varied to remove PM monitoring. DPIE approved the removal of HVAS from the Air Quality and Greenhouse Gas Management Plan in December 2020.
  - > The extension of the Pine Dale Care and Maintenance Mining Operations Plan has been approved until April 2022.
  - > The surveys of the Purple Cooper Wing Butterfly have been paused because there are currently no mining activities.

*CCC member: stated they wanted to see ongoing monitoring of the butterfly and whether DPIE staff could still access the site to study the butterfly.*

The Chair stated that it is part of EnergyAustralia's requirements to facilitate access to the site when requested.

---

## 7. **Community Engagement**

- » Michelle provided an update on community engagement for 2021
  - > Round 1 of community grants are open, there is \$30,000 available.
  - > Applications have been advertised via the Lithgow Mercury, Village Voice and 2LT.
  - > In 2020 around \$23,000 was allocated to sponsorships and \$6,000 toward community donations. This is lower figure than previous years due to COVID and there being a lack of community events.
  - > EnergyAustralia is optimistic that 2021 will be more fruitful.

The Chair requested that a PDF of the advertisement is provided for circulation to CCC members.

**ACTION:** EnergyAustralia to provide a PDF copy of the advertisement to all the CCC members.

- » Michelle gave an overview of the new Energy Expo:
    - > The display has been created from local Traditional Owners.
    - > Uncle Tom was able to collect amazing artefacts from Piper's Flat and around the local area. He has made an amazing array of different tools and weapons that will be on display in the Expo.
    - > The staff at Mt Piper will have the opportunity to create an art piece with Aunty Helen that will be installed in the Cultural Keeping Place.
    - > EA are hoping re launch the upgraded Expo in April.
  - » Michelle and Greg both spoke about Preston Campbell's site visit
    - > Preston Campbell addresses the challenges of resilience and balancing home and work life. He gives insight and understanding into the importance of mental health in modern day living.
    - > A key focus of his program is to inspire and mentor participation of young indigenous people. He will be running a session for staff to "yarn" with him- to be comfortable and have a chat.
  - » Michelle outlined a new electric vehicle has arrived at site with EnergyAustralia branding.
-

- 
- » Michelle gave an overview of recent employment opportunities at Mt Piper.
    - > EnergyAustralia have appointed 3 new apprentices, 1 electrical and 2 mechanical.
    - > EnergyAustralia have had 3 new employees start between December 2020 and February 2021.
- 

#### 8. **Update Rail Unloader Project**

- » Greg gave a very brief overview of the rail unloader project but did not go into much detail as nothing has changed since he spoke about it in December.
  - » Refer to slide 37 of the presentation for a summary of the rail unloader project.
- 

#### 9. **Update Water Treatment Project**

- » Greg gave an update of the water treatment project
    - > The facility is currently treating 36ML per day. This treated water is now being used by the power station.
    - > Looking to 2021, a goal will be about timing and getting all the separate processes; water, ash brine and coal integrated and into balance.
- 

#### 10. **Update Mt Piper Energy Recovery Project**

- » Greg gave an overview of the recovery project
- » Refer to slides 44, 43 and 45 of the presentation for the project timeline and stages of the EIS.
  - > Currently, EnergyAustralia are waiting for an assessment report from DPIE.
  - > When available, EnergyAustralia will pass on details as to how members can participate in giving feedback.

*CCC member: Asked if EnergyAustralia had a made a decision regarding investing in the project.*

- » Greg answered that EnergyAustralia will await determination of the project and will then make an investment decision.
- 

#### 11. **Project Updates**

- » Greg and Ben provided an overview of key project updates.

##### Outcome of 2020 Unit 1 Outage

- > The Unit 1 outage was a success
- > All budgeted works have been completed. Some areas were not scoped in budget and hence cost the project an additional \$10 million. As a result, Unit 1 is now burning 5% less coal at the top of the range.
- > Results were better than expected.

##### Groundwater Interception Project

- > Since the last CCC meeting, the Production Bores that monitor water quality have been installed.
- > There are 5 water license applications being prepared to submit to NSW Water in order to receive allocation.

*CCC member: Asked how frequently EnergyAustralia test the water.*

- » Greg answered that at the moment there is no requirement for EnergyAustralia concerning the frequency of their testing, the testing is purely voluntary. The
-



---

purpose of the testing was to aid EnergyAustralia with the detailed design. They were monitoring the production bores weekly and now it has been scaled back to once per month.

- » Ben noted that there has been one curve ball which has caused challenges, elevated iron levels that is not from the ash repository has been detected in the groundwater. . Mt Piper is not set up to deal with a high level of iron. It is causing issues in EnergyAustralia's ability to treat the water.

#### What 2021 looks like for Mt Piper

- » Key project objectives
  - > Piper Flat Coal Rail Unloader determination
  - > Securing a diverse coal supply
  - > A successful Mt Piper Unit 2 Outage
- » Key operational objectives
  - > Work management system upgrade
  - > Operational flexibility
- » Work arrangements
  - > Flexible working options for staff.

---

#### 12. **Meeting Close**

- » The next meeting will be held on 5 July 2021.
-

1 March 2021

# **EnergyAustralia Lithgow Region**

## **Community Consultative Committee**

Greg McIntyre  
Head of Mt Piper



---

# Agenda

1. Welcome and introductions
2. Review of Notes From Previous Meeting
3. Site Update from EnergyAustralia
4. Project updates from EnergyAustralia – existing and planned
  - Outcome of 2020 Unit 1 Outage
  - Groundwater Interception Project
  - What 2021 Looks Like for Mt Piper
5. General Discussion
6. Meeting Close



# Welcome and Introductions

# Review of Notes from Previous Meeting

---

## Response to Questions/Actions

***Groundwater Interception Project - CCC to be provided with a link to the REF and details of public exhibition, when available***

- Link should be available soon and will be provided when it is.

***Response on Lithgow Community Power Projects report – Greg to provide further detailed response to the query in the next CCC meeting***

- There is no further response. The response that was tabled last meeting is the company's response.

***Status of Pine Trees***

- We unfortunately don't have an update on this issue.

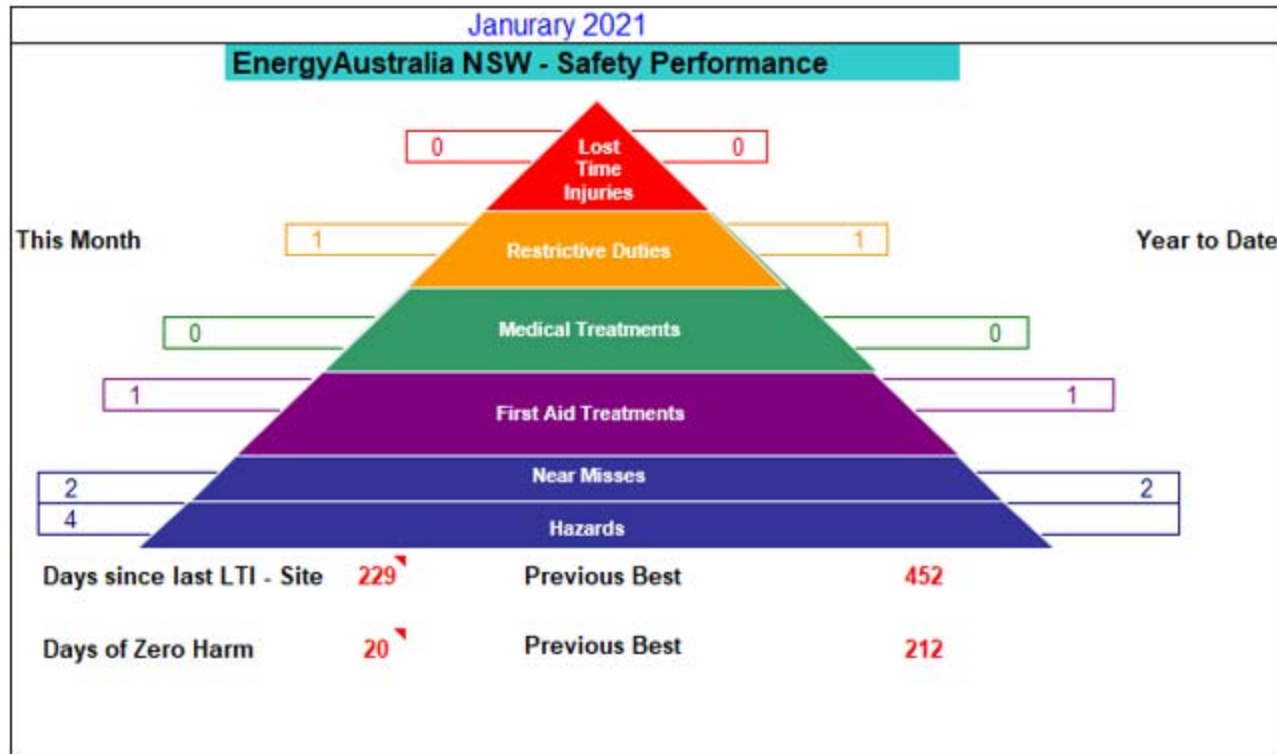
***Michelle to confirm number of applicants for apprenticeship***

- We received 72 applications for the mechanical and electrical apprenticeships, combined.

# Site Safety

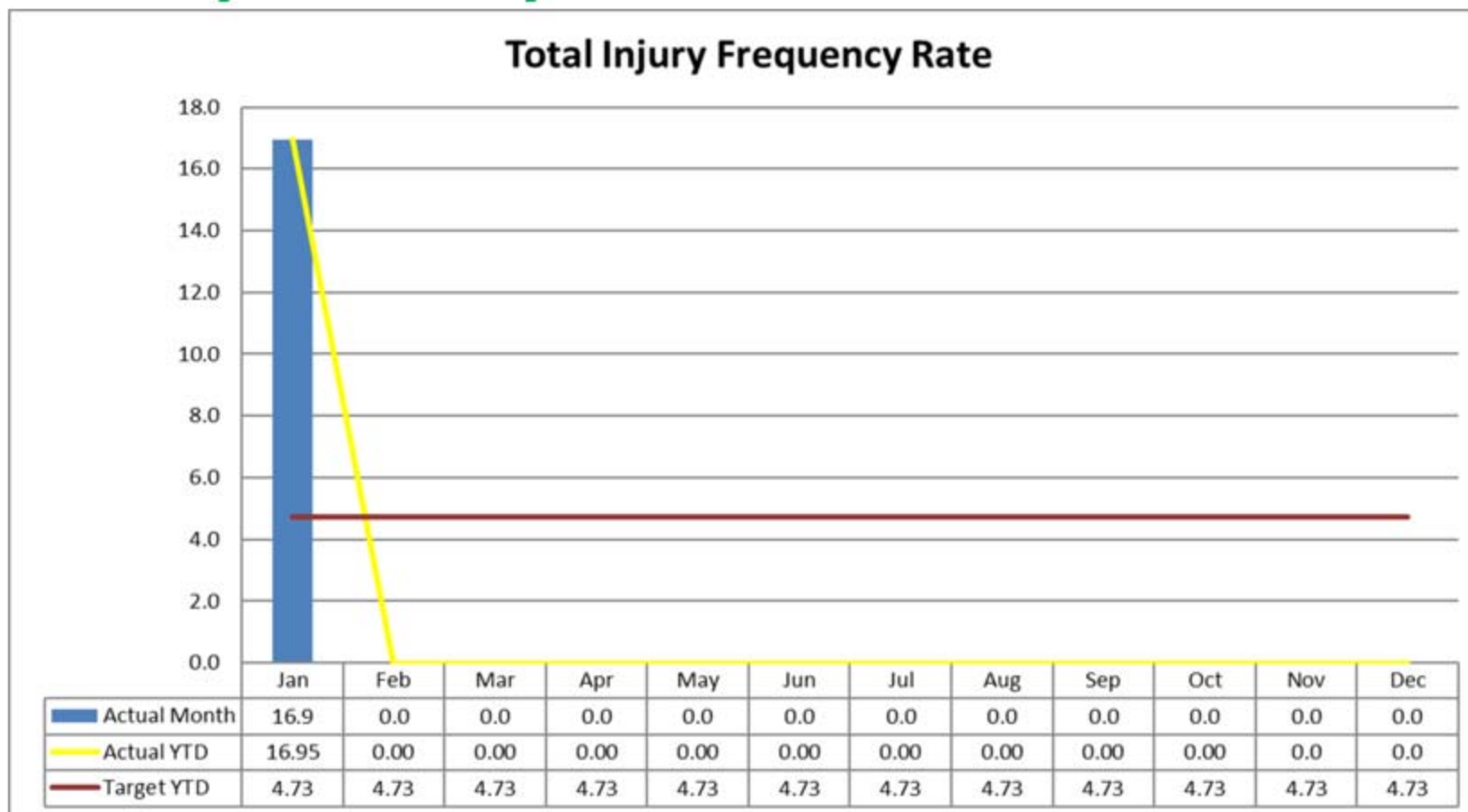


# Site Safety – January 2021

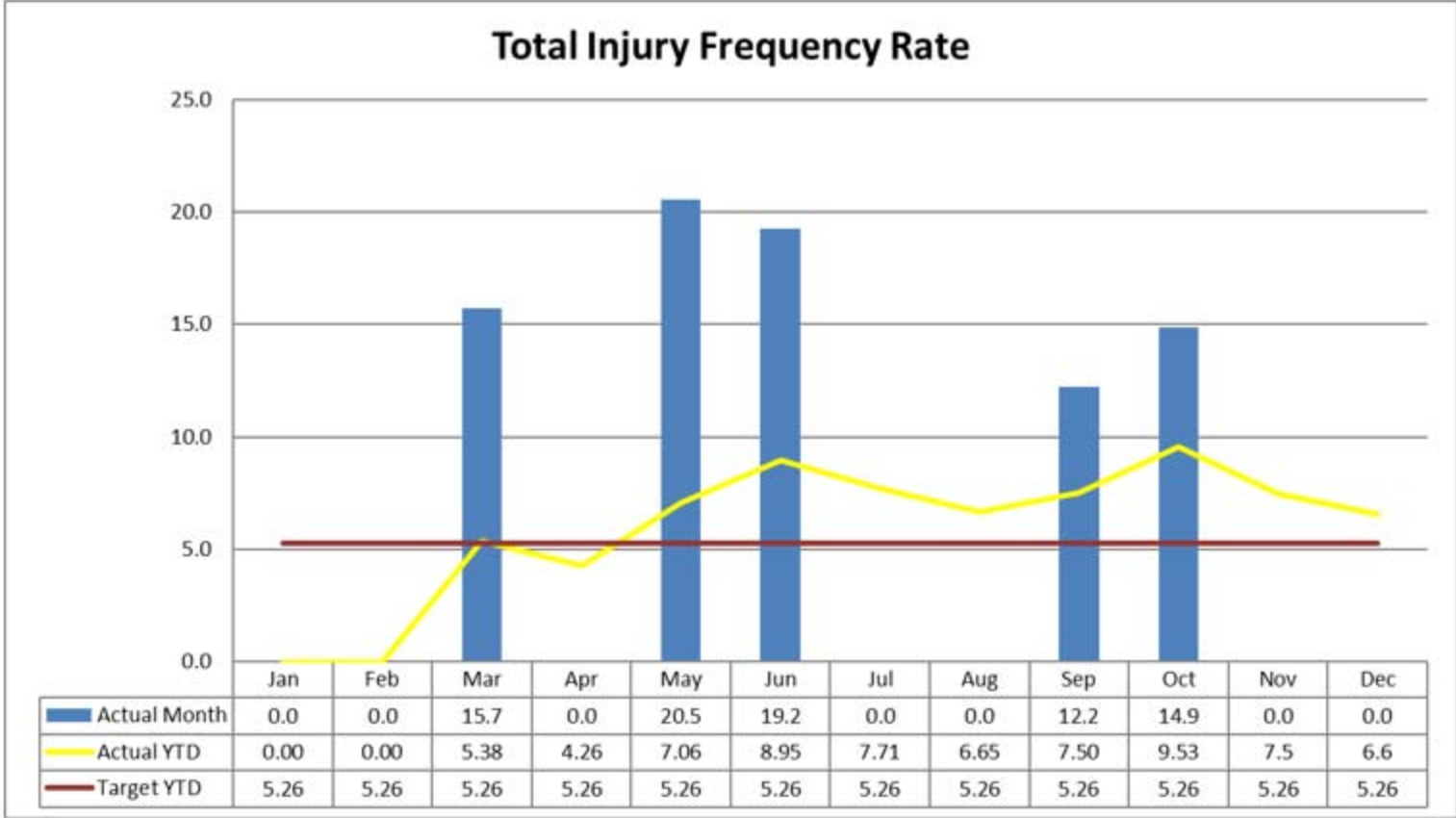




## Site Safety – January 2021



# Site Safety – December 2020



# Update - Water Management



---

## Update on Water Management

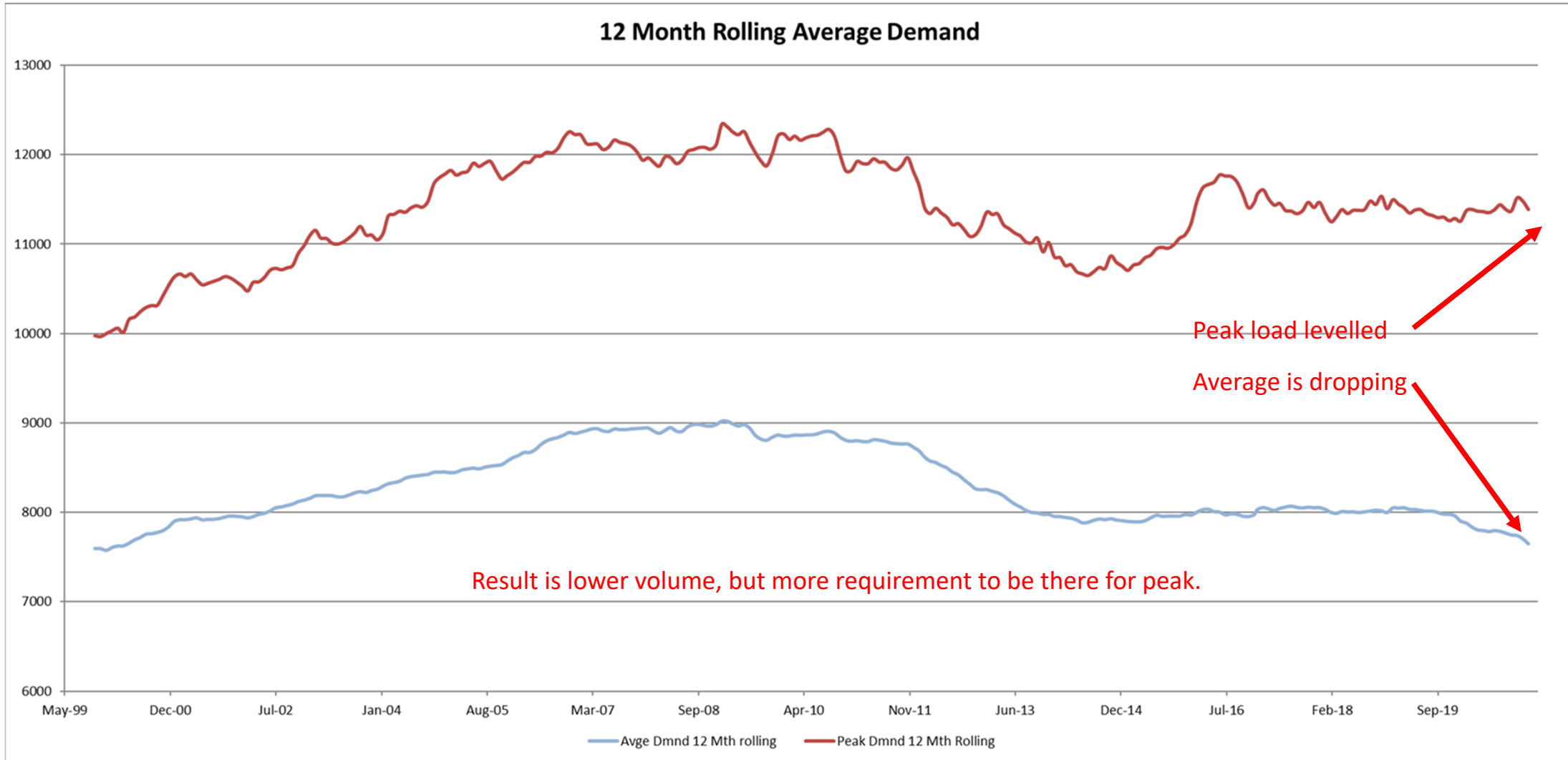
- Oberon Dam level is at 32.14%
- Total Active Storage is at 95.0% with:
  - Lake Lyell at 96.7%
  - Lake Wallace at 105.3%
  - Thompsons Creek Dam at 92.2%
- No alerts for Blue-green algae within Lake Lyell and Lake Wallace.



# Market Update



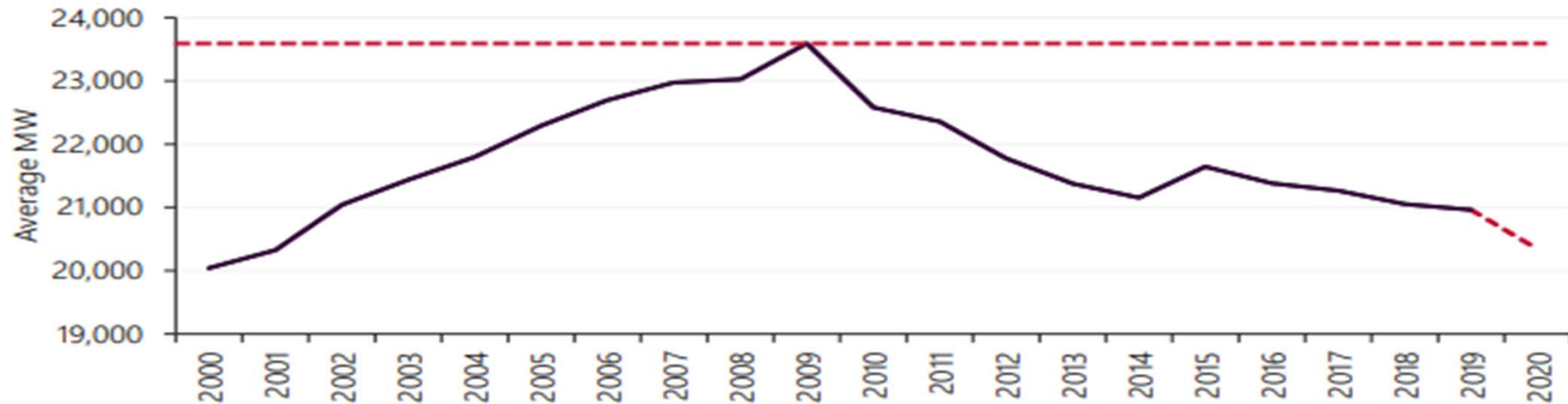
# Operation in the Market



## The Market

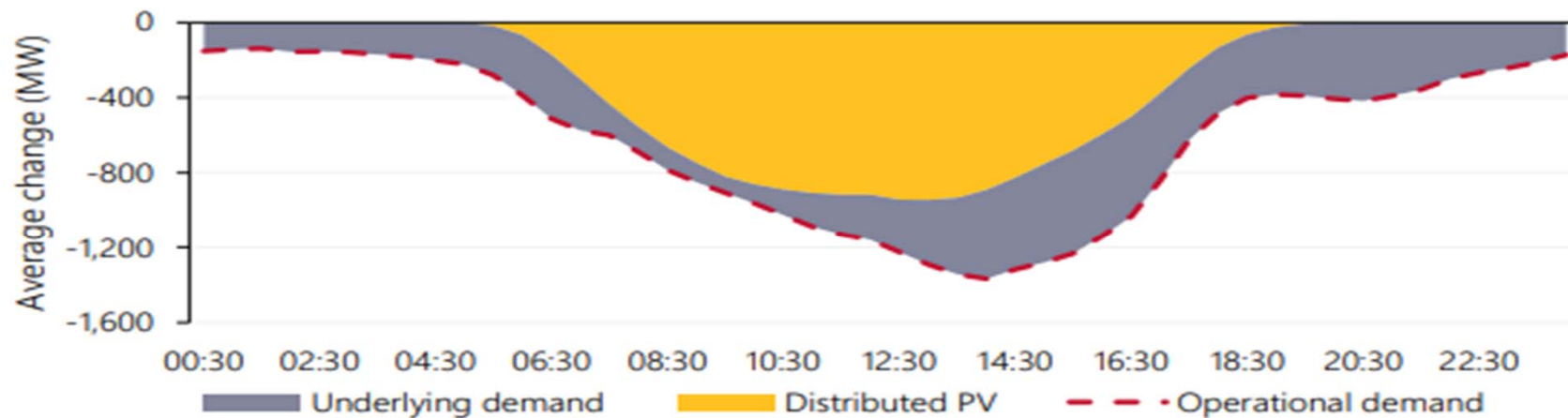
**Figure 3 NEM demand reduced to the lowest quarterly average since 2001**

Average NEM operational demand (Q4s)<sup>8</sup>



**Figure 4 Mild Q4 conditions and increased distributed PV reduced demand across the day**

Change in NEM-average operational demand by time of day (Q4 2020 versus Q4 2019)



# Operations (Site) Update





# Mt Piper Operations

## Mount Piper Unit 1

- Outage was a success. Still reviewing costs.
- Debriefs are continuing to gather lessons learnt

## Mount Piper Unit 2

- In service and available for market requirement

## Fuel Supply

- Springvale actively mining, still operating with a lower horizon for the roof to increase stability and reduce contamination.
- However Jan/Feb still had roof stability issues, which are believed passed now.
- >1MT on stockpile and steady.
- Quality generally quite good, however February has seen a reliance on the stockpiled coal (Stacker incident and MRB blockage), which causes handlability issues.

## Water Treatment Facility

- In commercial operation, in final configuration.



## Operation Performance - January

	2021	January				
	Metric	This Month	Budget	YTD	YTD Target	BP21
Generation and Fuel	Generation GWh	555	694	555	694	7217
	Coal Use KT	231	296	231	296	2953
	Auxiliary Energy	6.96%	6.26%	6.96%	6.26%	6.26%
	Heat Rate GJ/MWh	9.53	9.53	9.53	9.53	9.53
Availability	Availability	73.54%	87.31%	73.54%	87.31%	75.65%
	MP1	74.18%	87.31%	74.18%	87.31%	87.31%
	MP2	72.87%	87.31%	72.87%	87.31%	63.94%
Market Performance	VOLA (\$M)	\$1.4	0.30	\$1.44	\$0.0	\$ 11,658.46
	FCAS Causer Pays Factor	0.00%			0.00%	
	Market Non Conformance	1	0	1		

---

## The Future

### Fuel Supply

- EPC tenders received for rail unloader.
- Coal supply tenders close next month.

### Operation

- Market is going to require changed behaviours
- Lower minimum generation
- Higher ramp rates
- “Getting out of the way” during sustained negative prices.

# **Update – Lamberts North Ash Placement Project**



---

## Lamberts North Ash Placement Project Update

- Ash Placement Volume
- Brine Conditioned Ash to Mt Piper Area 1
  - Jan to Dec 2020 - 540,824 T
  - Jan 2021 – 50,796 T
- No Water Conditioned Ash to Lamberts North
- No complaints received
- No environmental incidents were recorded during the past quarter
- An application to modify the Lamberts North development consent is being prepared. The modification is seeking approval to install HDPE liner for the placement of brine conditioned ash.



**Update – Lamberts North Ash  
Placement Project:  
MOD 1**





## Justification, Need and Objectives

### Justification and Need

- Sampling has detected elevated levels of total dissolved solids (TDS) in surface water and groundwater in the vicinity of the MPAR associated with (amongst other things), the placement of BCA in the MPAR.
- Ongoing placement of BCA in accordance with existing approved practices is unlikely to result in the environmental performance intended for the LNAR.

### Objectives

- To minimise and manage the potential environmental or social impacts which may result from the ongoing use of the LNAR.
- To limit the risk of leachate from BCA migrating into the surrounding environment through the construction of a liner with very low permeability for BCA placement within LNAR.
- Update the capping strategy associated with LNAR to limit the vertical and lateral movement of BCA leachate through the ash to the surrounding environment.
- Update the LNAR footprint in the context of the existing and proposed surrounding activities and interactions.



# Proposed Planning Pathway and Assessment

## Section 4.55 (1A) Modification involving minimal environmental impact

- Improved environmental controls through leachate collection and leachate management
- Minimal changes to approved construction and operational activities

## Substantially the Same Development

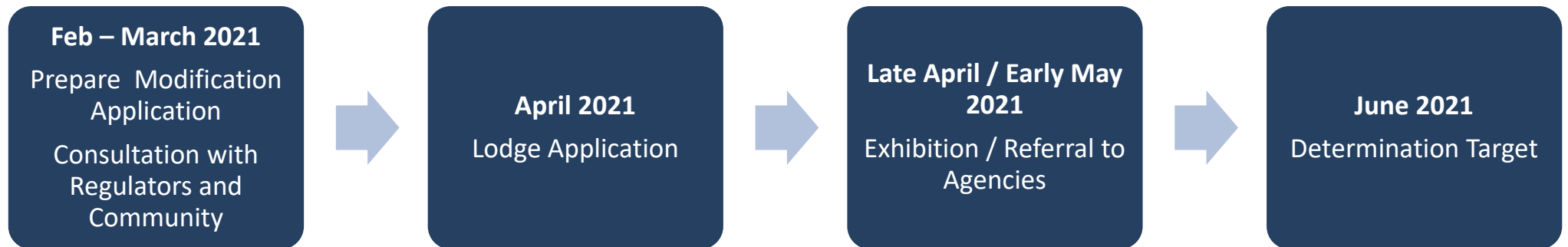
- Same purpose
- Same approved footprint
- Consistent with approved maximum landform height of RL 980 m AHD
- Involves minimal construction and operational changes to ash placement within LNAR
- No changes proposed to LSAR

## Environmental Assessment

- Statement of Environmental Effects, supported by:
- Water Assessment, inclusive of Water Balance and Neutral or Beneficial Effect (NorBE) Assessment

---

## Indicative Timeline



# Mt Piper Compliance Reports



---

## Mt Piper Compliance Reports submitted to the EPA

Mt Piper has submitted a number of reports as required following the variation of its Environment Protection Licence 13007 in July 2020.

- A Dioxin and Furan Study
- A Site Specific Air Emissions Monitoring Plan
- A Continuous Emissions Monitoring Systems (CEMS) Quality Assurance and Control Procedures; and
- An Air Pollution Control Equipment – Maintenance, Operation and Fault Response Procedure

Further compliance reports to be submitted to the EPA prior to the next CCC meeting include:

- The Mt Piper Annual Return
- The Annual Air Emission Monitoring Report
- The National Pollutant Inventory (NPI) report; and
- A Delivery Plan for Particulate Matter CEMS

# **Update – Pine Dale and Enhance Place**



---

## Pine Dale and Enhance Place Update

- Pine Dale and Enhance Place Annual Environmental Management Reports submitted.
- Pine Dale recorded one administrative non-compliance associated with the groundwater monitoring schedule and lack of access to bores due to bushfire damage.
- Pine Dale and Enhance Place Rehabilitation cost estimates submitted – no change to 2019.
- Pine Dale EPL varied to remove PM<sub>10</sub> monitoring. The Air Quality and Greenhouse Gas Management Plan updated to remove HVAS. Approved by DPIE early December 2020.
- DAWE endorsed the temporary cessation of Purple Copper wing Butterfly monitoring/surveys. Surveys will recommence when mining activity recommences.
- NSW Resources Regulator has approved an extension to the Pine Dale Care and Maintenance Mining Operations Plan (MOP) from April 2021 to April 2022.
- Pine Dale Annual Return submitted within the required timeframe. No non compliances identified.

# Community Engagement Program



---

# Community Engagement Program 2021

## Community Grants Round 1

- \$30,000 available
- Applications open 1 March and close 2 April and will be advertised in the Lithgow Mercury, Village Voice and 2LT.

## Sponsorships and Donations

- In 2020 \$23,523.80 was distributed in Sponsorships and \$6,020 in Donations
- This figure is down from previous years due to the impact of COVID.
- EnergyAustralia are hopeful that 2021 will see a return to some normality for community events.



## Energy Expo Update

- The Energy Expo Centre has been upgraded and we are working with our local Traditional Owners to create a Cultural Keeping Place within the Expo.
- We commissioned Uncle Tom to make some Indigenous tools and weapons to include in this space.
- We will also be including some Indigenous artifacts that were collected at Pipers Flat.
- Aunty Sharon will be coming to site with some artwork that our staff will have the opportunity to place their hand prints on, which will then be installed in the Cultural Keeping Place.
- The new look Expo will be launched in April.



## Preston Campbell – Site Visit

- Preston will be on site – 3<sup>rd</sup> and 4<sup>th</sup> March
- He is invited to meet with teams across the site and share his experiences and challenges around mental health and resilience
- The Preston Campbell Foundation supports his vision of developing programs and opportunities which inspire and mentor participants to achieve their aspirations and dreams of connecting Aboriginal and Torres Strait Islander peoples with their culture, sense of place and well-being.
- Preston will also be visiting the Portland Central School to participate in their mental health resilience program, Deadly Dreaming.



## EV On Site

- As part of EnergyAustralia's and CLP's EV100 commitment, EnergyAustralia purchased two electric vehicles in 2019.
- We have installed an EV charger at the Expo Centre. It's a 50kW Tritium DC Fast Charger, capable of charging Evs at around 350kms range per hour, or roughly 5kms range per minute. Other EA sites also have these fast charge systems installed.
- The Kona is onsite at Mt Piper and will be part of the fleet of vehicles we have here for the next 12 months.
- Receipt of the vehicle was delayed due to COVID



---

# Employment Opportunities

## Apprentice Program

We have appointed 3 Apprentices, 1 electrical and 2 mechanical who commenced their employment and TAFE on 15<sup>th</sup> of January. All our Apprentices are part of a Skill Centre program with TAFE for 6 months.

## New Employees

In the period December 2020 to February 2021 new starters were welcomed to Mt Piper in Maintenance team x 3

# Update Rail Unloader Project



---

# Rail Unloader Project

## Recap

- Mount Piper has a key role in NSW's electricity market and in the transition to a clean energy future
- EnergyAustralia is undertaking a multi-faceted coal sourcing project to underpin the long-term future for Mt Piper once Springvale mine closes in 2024
- A rail coal unloader at Pipers Flat is a core part of the project's objectives to ensure fuel security for Mt Piper

## Current

- Responses to the Invitation to Tender have been received and are now being assessed

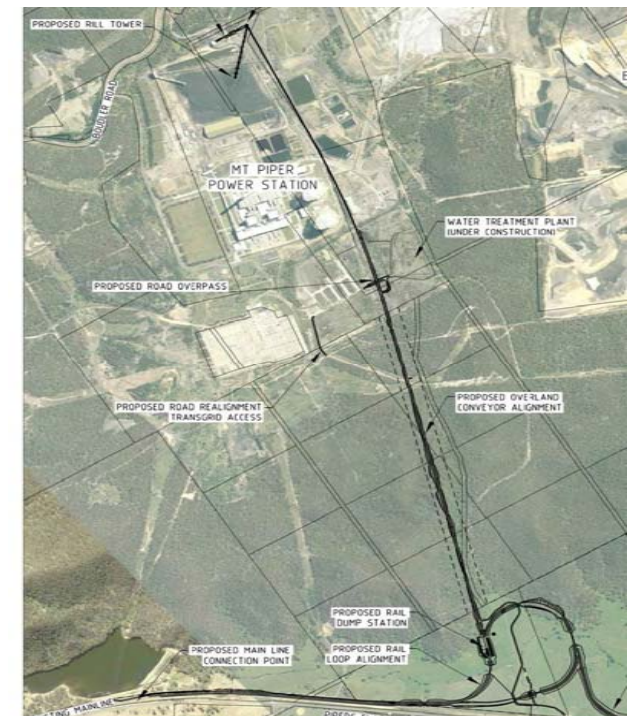
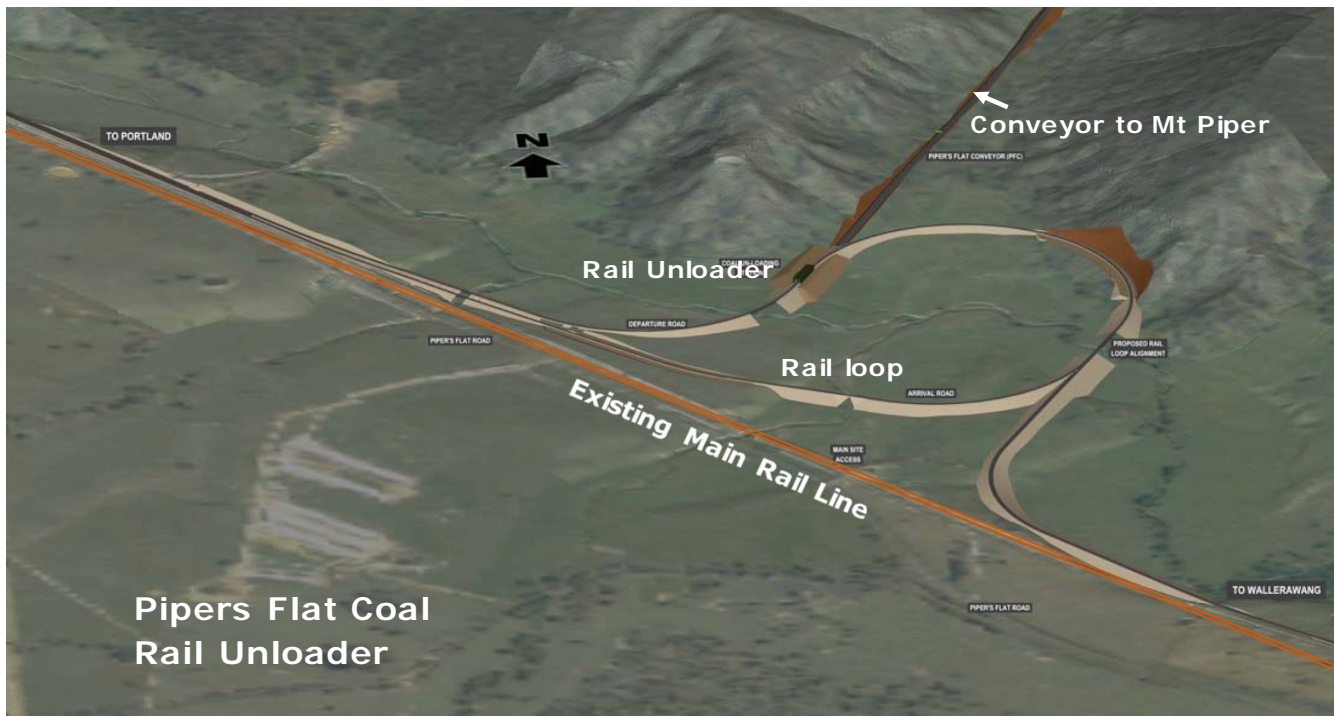
---

## Rail Unloader Project

- Aboriginal heritage site work has been completed and a report is being prepared (could take up to 6 months to complete)
- A European heritage study was also undertaken and the report is currently being finalised
- Coal supply and rail transport tenders were recently issued
- Based on the outcome of rail unloader, coal supply and rail transport tenders, EnergyAustralia expects to make a final investment decision in 2021

# Rail Unloader Project

- Rail loop at Pipers Flat and eastern siding
- Two major bridges over Pipers Flat Creek
- A rail unloading station and amenities area
- A dump hopper and loadout to the overland conveyor
- An overland conveyor
- A transfer station at Mt Piper Power Station
- A new rill tower on the coal stockpile
- An extension to conveyor C14 for direct feed to the plant





# **Update – Water Treatment Project**



# Joint EANSW/Centennial Water Treatment Project



- The Water Treatment Facility (WTF) is treating up to 36MI/day and the treated water is now being used in the power station.
- Final optimisation of the Water Treatment Facility is nearing completion with the introduction of the EA mixed waste & Blowdown brine waters over the next month for purification and finally re-use in the power station.

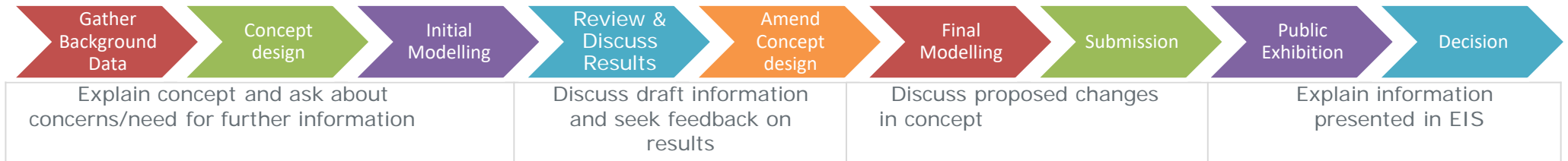


# Update – Mt Piper Energy Recovery Project



# Energy Recovery Project presentation – Feb 2021

## Stages of EIS



A Response to Submission was submitted to the DPIE on 7<sup>th</sup> August. Further clarification and comments were received through September and October (as previously discussed).

Project prepared and submitted a Supplementary Response to Submission on 1<sup>st</sup> December to address the above after several meetings with the relevant agencies.

NSW Health confirmed that the majority of issues raised in the independent review of the human health risk assessment “have been satisfactorily addressed” and supported the proposed conditions of consent from the independent reviewer.

Currently we are addressing an additional clarification from the EPA regarding noise. The DPIE is working with all agencies to complete their assessment report and make a recommendation.



**We are here**

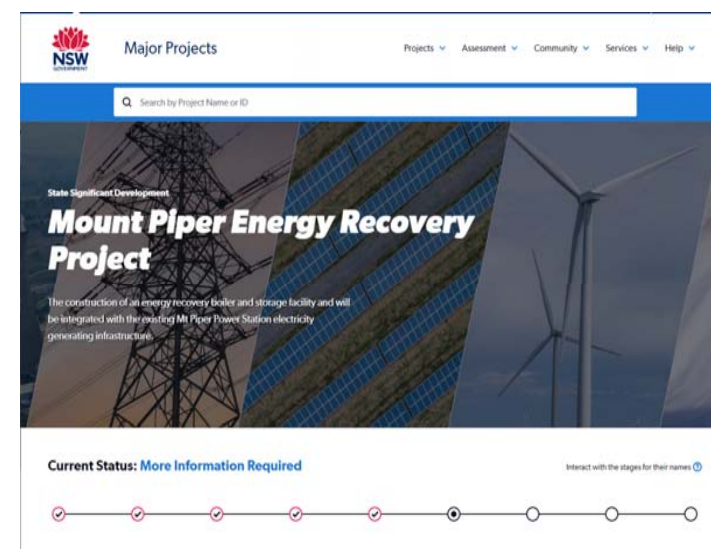
In Aug 20 we have submitted a response to the submissions made during the public exhibition process in Jan-Feb 20. We then submitted a Supplementary Response to Submission in December to address additional comments from the agencies.

DPIE is preparing an assessment report and a decision will be made either by the DPIE or the Independent Planning Commission as appropriate.

## Community Information (since last CCC meeting)

- Covid-19 risks has reduced the opportunity for most face-to-face updates recently, however informal briefings to industry bodies, Council, and the community have continued remotely where possible.
- We met with various government agencies to discuss and clarify the issues raised in their submissions & on general progress of the approvals.
- Discussions are continuing with Council regarding the voluntary planning agreement (VPA)
- We provide regular updates to Council on the status of the project.
- Following the DPIE's report and recommendations & prior to any subsequent IPC hearing we will conduct another open community information session in Lithgow to provide a further update.

More updates will be provided as the Project undergoes next stage of Development Approval Process



# Energy Recovery Project presentation – March 2021



## PROJECT UPDATES –

- Outcome of 2020 Unit 1 Outage
- Groundwater Interception Project
- What 2021 Looks Like for Mt Piper



# Outcome of 2020 Unit 1 Outage



## Outcome of 2020 Unit 1 Outage

The Unit 1 Outage was a success

- All budgeted works completed
- Turbine outage completed
- End of life replacements of multiple areas:
  - Superheater fatigue cracking
  - Reheater life consumption
  - Low Pressure Heater replacement
- Chemical Control Room upgraded

Results as good or better than expected:

- 730 MW achieved, easily.
- Unit efficiency uplift
  - New turbine components
  - Boiler efficiency recovery

**5% less coal  
burn per  
MWh  
delivered**

# Groundwater Interception Project

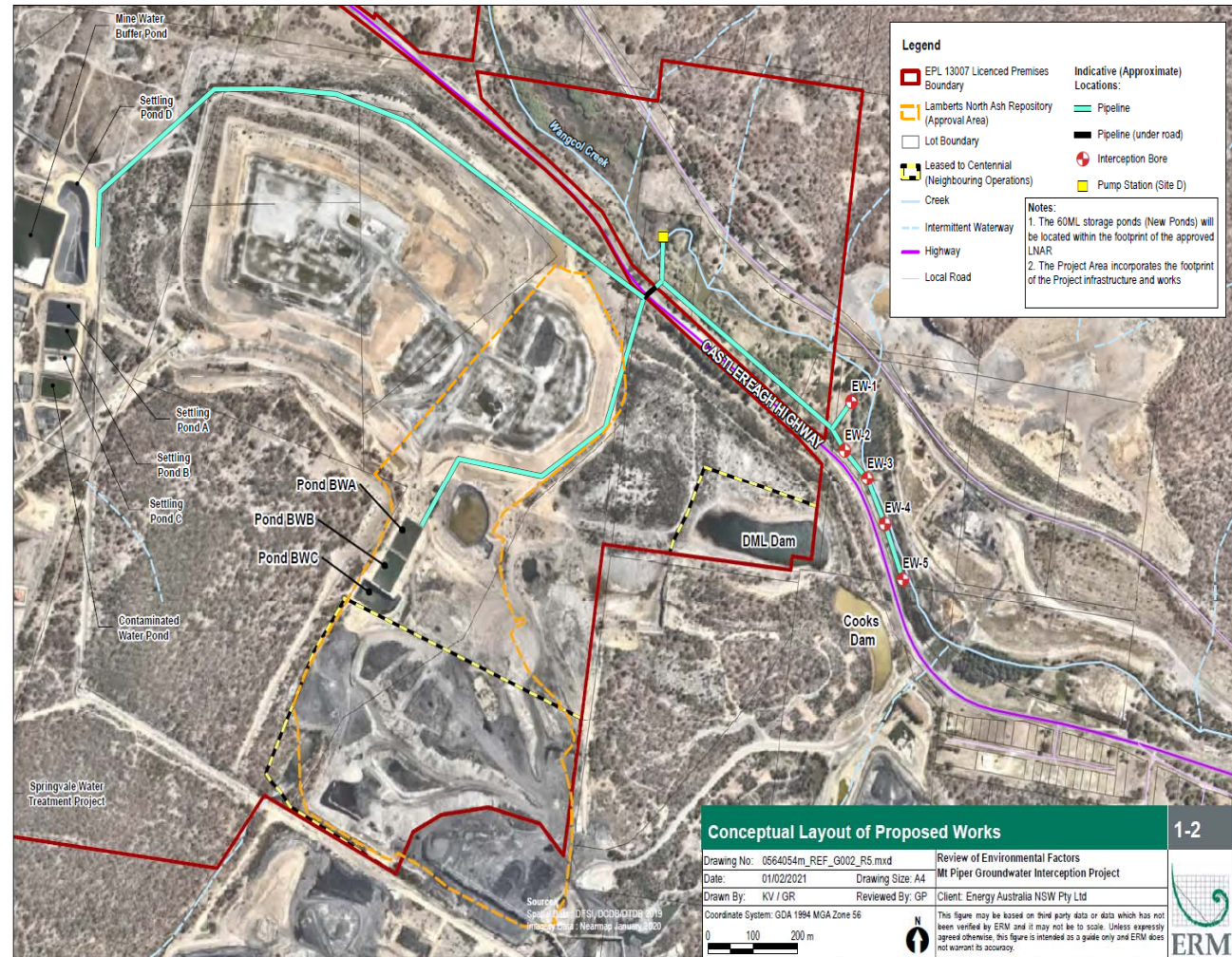
# Groundwater Interception Project



**Nine Monitoring Bores,  
five with Depth loggers**

# Groundwater Interception Project

- REF submitted to NRAR.
- Water Licence Applications (FIVE) being prepared.
- Detailed design commenced.
- Timeframe for design and construction is likely to be delayed
- Monitoring of Production Bores (water quality) weekly since 8<sup>th</sup> January 2021 has highlighted potential need to pre-treat water
- Water pre-treatment will be an additional design element not originally considered



# What 2021 Looks Like for Mt Piper

---

# What 2021 Looks Like for Mt Piper

## Key Project Objectives

- Pipers Flat Coal Rail Unloader determination
- Securing a diverse coal supply for Mt Piper
- Delivering a successful Mt Piper Unit 2 Outage

## Key Operational Objectives

- Work Management System upgrade and uplift
- Operational Flexibility – Focus for the future

## Work Arrangements

- More staff enjoying flexible working arrangements with a mix of onsite and home office routines

