

# **Delta Electricity**

## **Western Community Reference Group**

**Wednesday 29<sup>th</sup> May 2013**

## Meeting

### Mt Piper Power Station Seminar Room

1. Welcome
2. Notes & Business Arising from previous meeting
3. Update Items
  - Operations
  - Rail Unloader Project
  - Water Management
  - Access to Community Assets
  - Western Water Treatment Projects
  - NSW Government's Energy Reform Program
4. Member Feedback and General Business - Committee

# Updates

---



# Update on Mt Piper Operations



- Mt Piper Unit 1 is in service and operating reliably
- Mt Piper Unit 2 is in service and operating reliably
- Unit 2 had a tube leak and was taken out of service briefly
- Planning for Unit 2 Outage is in progress



## Update on Wallerawang Operations

- Unit 7 is back in service.
- Unit 7's outage is completed.
- Unit 7 Cooling Tower work is continuing.
- Temporary Cooling Towers are operating well
- Unit 8 has operated reliably.
- TransGrid switchyard construction is complete. Realignment of Transmission Lines is in progress



# Update on Wallerawang Operations



## Update on Western Rail Coal Unloader



- Delta are continuing Environmental monitoring on the site.
- The Unloader Site remains under an agistment agreement.

## Update on Water Management



- Oberon Dam level is at 85.07%.
- Delta Total Active Storage is at 95.9% with:
  - 💧 Lake Lyell at 96.0%
  - 💧 Lake Wallace at 104.7%
  - 💧 Thompsons Creek Dam at 95.1%

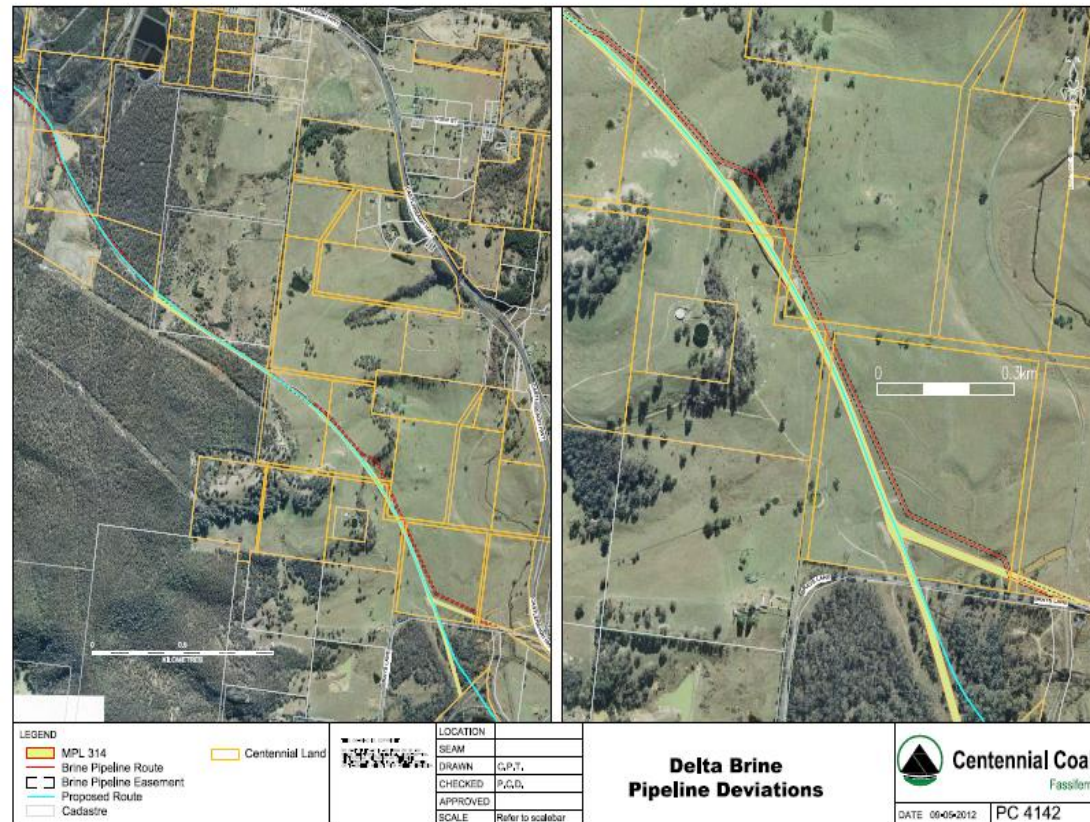


as at 24<sup>th</sup> May 2013



# Update on Water Management

- Water management projects continuing
- Three early engagement tenders close early June.
- WW 7 and 8 to RO connection in operation
- Project being implemented on program



## Update on Western Community Assets



- State Fisheries have access Agreement for Thompsons Creek Dam to approve. This has been followed up vigorously
- Leases for Lake Lyell and Lake Wallace have been executed by both Delta and Lithgow Council.
- Delta Park license has been executed by Delta and Lithgow Ranger Soccer Club. Lithgow Council have agreed to have an option to support this arrangement if necessary.

# General Business

---



## Environment Projects



- Hawkesbury Nepean Catchment Mgt Authority (HNCMA) direct seeding planting around Thompsons Creek Dam is in place and now being monitored.
- HNCMA wish to expand the project.
- HNCMA Willow Eradication at Lake Wallace went ahead last month. 14 volunteers from Delta assisted with this activity.
- Lidsdale Cut seepage reduction works ongoing monitoring continues.

# Staff Activity Day Lake Wallace



## Update on NSW Energy Reform



- NSW Government announced that Delta Western will be sold in Mid-Year 2013.
- Delta are currently involved in separation and transition activities.
- Due Diligence process is ongoing.
- Organisational restructure for separation is being formulated.
- Delta will advise further as information becomes available..
- Workshops on particular aspects of the business are continuing.