



Enhance Place Pty Limited

ABN: 31 077 105 867

Noise Management Plan

for the

Pine Dale Coal Mine (Including the Yarraboldy Extension)



August 2015

Revision History				
Version	Revision Date	Reason for Revision	Author	Authorised by:
1	June 2011	First edition	RW Corkery & Co	Hilton Goldinch
2	August 2015	Care and Maintenance	Coleen Milroy	Graham Goodwin

This page has intentionally been left blank

ACRONYMS USED THROUGHOUT THIS REPORT	V
1. INTRODUCTION	1
2. SCOPE	1
3. OBJECTIVES	2
4. SITE LOCATION AND DESCRIPTION	2
5. APPROVAL REQUIREMENTS	4
6. SURROUNDING RESIDENCES	7
7. POTENTIAL NOISE SOURCES AND IMPACTS	9
7.1 Potential Noise Sources	9
7.2 Potential Noise Impacts	9
8. MANAGEMENT SAFEGUARDS AND MITIGATION MEASURES	10
8.1 Site Establishment and Construction	10
8.2 General Operations	11
9. NOISE MONITORING PROGRAM	11
9.1 Noise Monitoring Locations and Frequency.....	11
9.2 Noise Monitoring Procedures.....	12
9.2.1 General Requirements	12
9.2.2 Operational Noise Surveys.....	12
9.2.3 Traffic Noise Surveys	13
9.2.4 Supplementary Noise Survey	13
9.3 Meteorological Monitoring.....	14
10. NOISE MONITORING PROTOCOL	14
10.1 Review and Reporting of Monitoring Results.....	14
10.2 Noise Monitoring Triggers and Response Measures	14
10.2.1 All Locations are Compliant with Noise Criteria.....	14
10.2.2 Single / Short Term Exceedance of Noise Criteria	14
10.2.3 Continued Exceedances or Landholder Dispute	15
11. COMPLAINTS HANDLING AND REPSONSE	15
12. RESPONSIBILITIES AND ACCOUNTABILITES	16

TABLES

Table1	Project Approval Conditions	4
Table NM1	Details of Residences Surrounding the Yarraboldy Extension Area.....	8
Table NM2	Acoustically Significant Plant and Equipment.....	9
Table NM3	Accountable Positions and Tasks.....	16

FIGURES

Figure BF1	Locality Plan	3
Figure 4.4	Land ownership	7

CONTENTS

ACRONYMS USED THROUGHOUT THIS REPORT

AEMR	-	Annual Environmental Management Report
AS	-	Australian Standard
Council	-	Lithgow City Council
DECCW	-	Department of Environment, Climate Change and Water
DPE	-	Department of Planning and Environment
ENCM	-	Environmental Noise Control Manual
INP	-	Industrial Noise Policy
NMP	-	Noise Management Plan
OEH	-	Office of Environment and Heritage

1. INTRODUCTION

This Noise Management Plan (NMP) has been prepared for the Pine Dale Coal Mine, incorporating the Yarraboldy Extension, (“the mine”) in accordance with *Schedule 3 Condition 7* of Project Approval 10_0041 which requires that the NMP:

- (a) be prepared in consultation with DECCW and Council, and submitted to the Director-General for approval by the end of April 2011;
- (b) describe the noise mitigation measures that would be implemented to ensure compliance with the relevant conditions of this approval, including measures that would be implemented during the construction of the amenity bund (see Section 6); and
- (c) include a noise monitoring program that:
 - uses attended and / or unattended monitoring to evaluate the performance of the project (see Section 7); and
 - includes a protocol for determining exceedances of the relevant conditions of this approval (see Section 8).

It is noted that an extension of the required date for submission of the NMP to 16 May 2011 was provided by the Department of Planning and Infrastructure.

This NMP has been prepared in consultation with the Department of Environment, Climate Change and Water (DECCW) – now Office of Environment and Heritage (OEH), Lithgow City Council and with reference to relevant legislation and guidelines.

This NMP applies for the life of the mine and applies to both the construction and operational phases. It is proposed, however, that the NMP will be reviewed on an annual basis and, if required, updated to reflect any changes to noise management practices. Any significant updates to the NMP will be submitted to the then Department of Planning and Infrastructure (DoP&I) for endorsement.

The Pine Dale Mine has been placed on care and maintenance following cessation of all coal extraction in April 2014. While in Care and Maintenance, Pine Dale will continue to meet environmental approvals and obligations. This environmental management plan has been modified to reflect the current reduced impact consistent with the care and maintenance term. Rehabilitation activities are proposed during the care and maintenance term only. The current Noise Management Plan in accordance with EPL 4911, including quarterly attended noise monitoring, will remain in place for the duration of the care and maintenance term.

2. SCOPE

The scope of the NMP applies to the mine, incorporating ML 1569, ML 1578, and MLA 375, and covers all activities during the care and maintenance term which may impact on, or influence a risk to noise emission management. The purpose of the NMP is to:

- a) Identify potential noise emission sources and noise quality impacts (Section 7);
- b) Implement controls to mitigate noise emissions (Section 8);
- c) Describe noise monitoring program (Section 9);
- d) Describe noise quality monitoring locations and frequency (Section 9.1);

- e) Identify noise quality monitoring procedures (Section 9.2);
- f) Describe meteorological monitoring (Section 9.3);
- g) Identify noise monitoring protocol (Section 10);
- h) Describe a process for review and reporting (Section 10.1);
- i) Describe triggers and response measure (Section 10.2);
- j) Describe a process for complaints (Section 11);
- k) Describe responsibilities and accountabilities (Section 12);

3. OBJECTIVES

The objectives of this NMP include the following.

- Identify the relevant noise-related Project Approval conditions for the final rehabilitation of the existing Pine Dale Coal Mine and the construction and operation of the Pine Dale Coal Mine – Yarraboldy Extension.
- Identify potential noise sources and potential noise impacts from the mine.
- Identify appropriate noise mitigation measures for the mine and how these noise mitigation measures will be implemented.
- Specify appropriate intervals for noise monitoring to evaluate, assess and report noise emission levels from site establishment and construction and normal operations of the mine.
- Provide direction to appropriately respond to exceedances of noise criteria or receipt of noise-related complaints.

4. SITE LOCATION AND DESCRIPTION

The Pine Dale coal mine is owned and operated by Enhance Place Pty Ltd (Enhance Place), located approximately 17 kilometres north-west of Lithgow and 5km north of Wallerawang in New South Wales (see **Figure BF1**).

Extractive open cut mining operations ceased in April 2014 when Approved mineable resources were exhausted. Rehabilitation activities are currently being undertaken consistent with the Approved Care and Maintenance Mining Operations Plan.

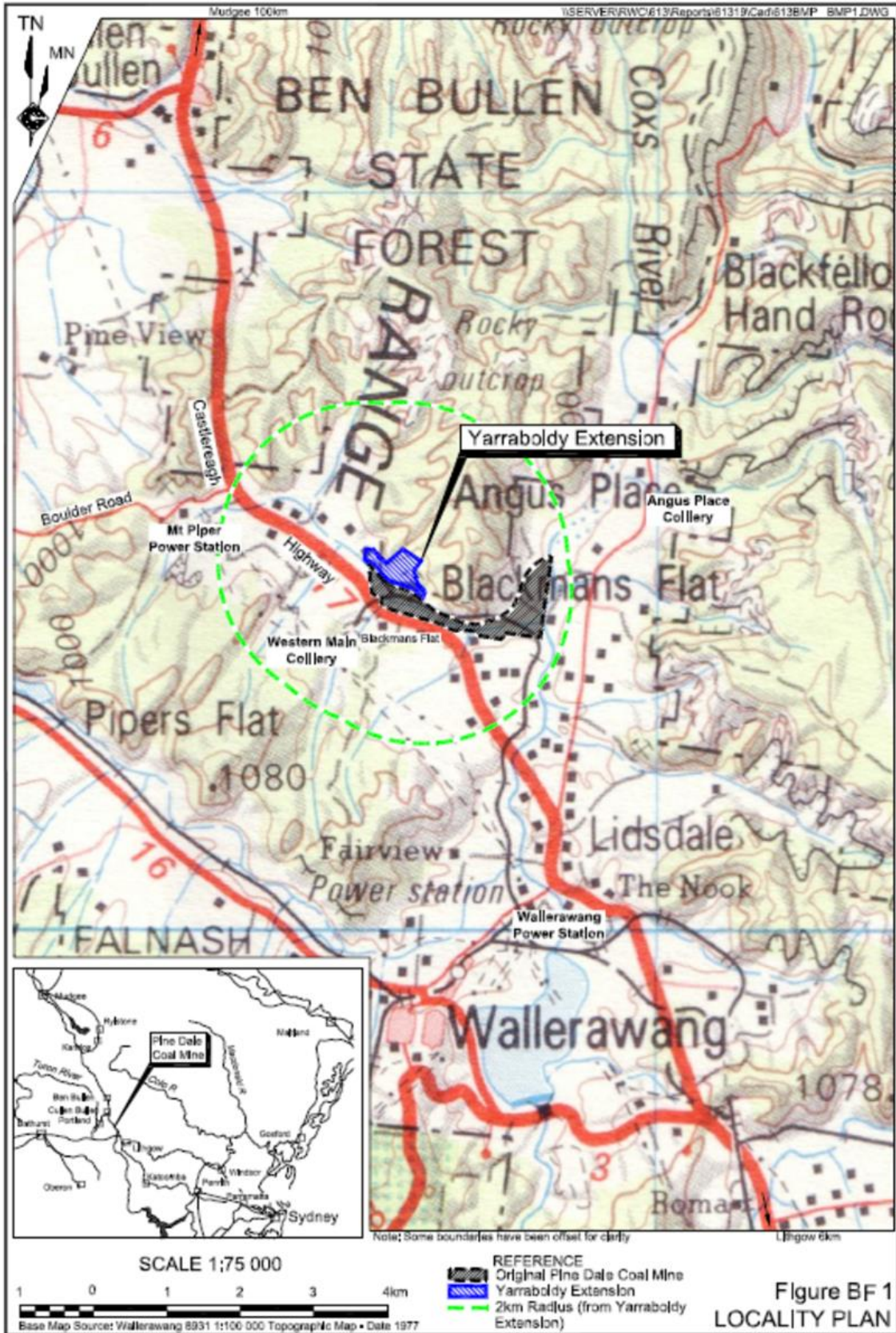


Figure BF1 Locality Plan

5. APPROVAL REQUIREMENTS

Conditional requirements within Project Approval 10_0041 relevant to the NMP are detailed in Table 1.

Table1
Project Approval Conditions

Ref	Project Approval Condition
Noise Schedule 3 Condition 1	<i>The Proponent shall : ensure that the noise generated by the project does not exceed the criteria in Table 1 at any residence on privately-owned land or on more than 25 percent of any privately-owned land. However, these criteria do not apply if the Proponent has a written agreement with the relevant landowner to exceed the criteria, and the Proponent has advised the Department in writing of the terms of this agreement.</i>
Noise acquisition criteria Schedule 3 Condition 2	<i>If the noise generated by the project exceeds the criteria in Table 2 at any residence on privately-owned land or on more than 25 percent of any privately-owned land, then upon receiving a written request for acquisition from the landowner, the Proponent shall acquire the land in accordance with the procedures in Conditions 6 - 7 of Schedule 4.</i>
Additional noise mitigation measures Schedule 3 Condition 3	<i>If noise generated by the project is greater than or equal to the noise levels in Table 3 at any residence on privately owned land, the Proponent shall implement additional noise mitigation measures (such as double glazing, insulation, and/or air conditioning) at the residence in consultation with the owner. If within 3 months of receiving this request from the owner, the Proponent and the owner cannot agree on the measures to be implemented, or there is a dispute about the implementation of these measures, then either party may refer the matter to the Director-General for resolution.</i>
Traffic noise impact assessment criteria Schedule 3 Condition 4	<i>The Proponent shall take all reasonable and feasible measures to ensure that the traffic noise generated by the project does not exceed the traffic noise impact assessment criteria in Table 4.</i>
Operating hours Schedule 3 Condition 5	<i>Apart from equipment maintenance activities, the Proponent may only carry out development on site between 7 am and 6 pm from Monday to Saturday, excluding public holidays. Equipment maintenance activities may be carried out on site between the hours of 7 am to 10 pm from Monday to Saturday and between 9 am to 4 pm on Sundays, excluding public holidays. Note: Condition 9 of Schedule 3 specifies blasting hours and Condition 34 of Schedule 3 specifies product transportation hours.</i>
Operating conditions Schedule 3 Condition 6	<i>The Proponent shall:</i> (a) <i>implement best practice noise management, including all reasonable and feasible noise mitigation measures to minimise the operational and road traffic noise generated by the project;</i> (b) <i>investigate ways to reduce the noise generated by the project;</i> (c) <i>report on these investigations and the implementation and effectiveness of these measures in the Annual Review, to the satisfaction of the Director-General.</i>
Noise Management Plan	<i>The Proponent shall prepare and implement a Noise Management Plan for the project to the satisfaction of the Director-General. This plan must:</i> (a) <i>be prepared in consultation with DECCW and Council, and submitted to the</i>

Ref	Project Approval Condition
Schedule 3 Condition 7	<p>Director-General for approval by the end of April 2011;</p> <p>(b) describe the noise mitigation measures that would be implemented to ensure compliance with the relevant conditions of this approval, including measures that would be implemented during the construction of the amenity bund;</p> <p>(c) include a noise monitoring program that:</p> <ul style="list-style-type: none"> uses attended monitoring to evaluate the performance of the project; and includes a protocol for determining exceedances of the relevant conditions of this approval.
Notification of landowners Schedule 4 Condition 1	<p>By the end of April 2011, the Proponent shall notify in writing the owners of:</p> <p>a) any residence on the land listed in Table 3 of Schedule 3 that they are entitled to ask for additional noise mitigation measures to be implemented at their residence at any stage during the project; and</p> <p>b) any privately-owned land within 2 kilometres of the approved open cut mining pit on site that they are entitled to ask for an inspection to establish the baseline condition of any buildings or structures on their land, or to have a previous property inspection report updated.</p>
Notification of landowners Schedule 4 Condition 2	<p>Within 2 weeks of obtaining monitoring results showing:</p> <p>(a) exceedances of the relevant criteria in Schedule 3, the Proponent shall notify the affected landowners and/or tenants in writing of the exceedance, and provide regular monitoring results to each of these parties until the project is complying with the relevant criteria again;</p> <p>(b) exceedances of the relevant criteria in Table 3 of Schedule 3, the Proponent shall notify in writing the applicable owner that they are entitled to ask for additional noise mitigation measures to be installed at their residence; and</p> <p>(c) exceedances of the relevant air quality criteria in Schedule 3, send the affected landowners and tenants (including the tenants of any mine-owned land) a copy of the NSW Health fact sheet entitled "Mine Dust and You" (as may be updated from time to time).</p>

Table 1: Noise Criteria dB(A)

Location	Day	Evening	
	<i>L_{Aeq} (15 min)</i>	<i>L_{Aeq} (15 min)</i>	
Residences 18, 32 and 33	42	39	
Residences 20-23, 25 and 27-29	42	36	
Residences 8, 10-12 and 14	42	35	
Residences 2, 5-7 and 35	35	35	
All other residences	35	35	
During construction and removal of the amenity bund	Residences 8, 10-12, 14, 18, 20-23, 25, 27-29 and 32 - 33	46	N/A

Notes:

- To identify the locations referred to in Table 1, see figures in Appendix 1;
- Noise generated by the project is to be measured in accordance with the relevant procedures and exemptions (including certain meteorological conditions) of the NSW Industrial Noise Policy.

Day: The period from 7:00am to 6:00pm Monday to Saturday and 8:00am to 6:00pm Sundays and Public Holidays

Evening: The period from 6:00pm to 10:00pm Monday to Sunday

Table 2: Noise acquisition criteria dB(A) $L_{Aeq(15min)}$

Location	Day	Evening
Residences 8, 10-12, 14, 18, 20-23, 25, 27-29 and 32 - 33	47	44
Residences 2, 5-7 and 35	43	41
All other residences	41	41

Notes:

- To identify the locations referred to in Table 2, see figures in Appendix 1;
- Noise generated by the project is to be measured in accordance with the relevant procedures and exemptions (including certain meteorological conditions) of the NSW Industrial Noise Policy.
- For this condition to apply, the exceedances of the criteria must be systemic.

Table 3: Noise treatment criteria dB(A) $L_{Aeq(15min)}$

Location	Day	Evening
Residences 8, 10-12, 14, 18, 20-23, 25, 27-29 and 32 - 33	44	42
Residences 2, 5-7 and 35	40	38
All other residences	38	38

Notes:

- To identify the locations referred to in Table 3, see figures in Appendix 1;
- Noise generated by the project is to be measured in accordance with the relevant procedures and exemptions (including certain meteorological conditions) of the NSW Industrial Noise Policy.
- For this condition to apply, the exceedances of the criteria must be systemic.

Table 4: Traffic noise impact assessment criteria dB(A)

Road	Day $L_{Aeq15\text{ hour}}$
Castlereagh Highway (SH18)	60

Note:

- Traffic noise generated by the project is to be measured in accordance with the relevant procedures in the DECCW's Environmental Criteria for Road Traffic Noise.

6. SURROUNDING RESIDENCES

Figure 4.4 displays the location of surrounding residences whilst Table AQ1 identifies the distance of residences within approximately 1km to the nearest point of the Yarraboldy Extension Area.

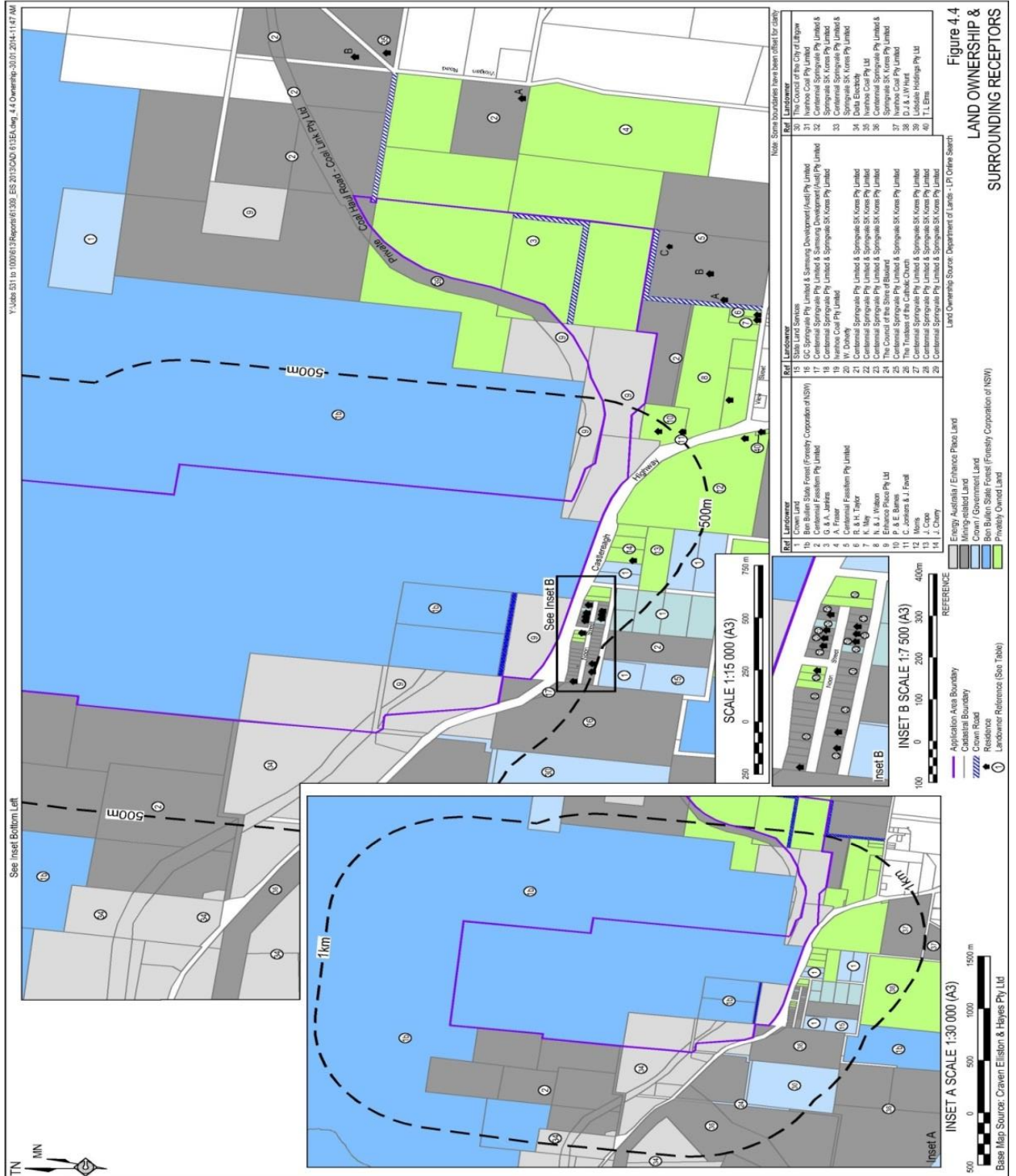


Table NM2
Details of Residences Surrounding the Yarraboldy Extension Area

Reference Number	Owner	Distance to Yarraboldy Extension Area
2	Centennial Fassifern Pty Limited	2 200m W
5	Centennial Fassifern Pty Limited	1 490m NW
6	R. & H. Taylor	1 490m NW
7	K. May	1 470m NW
8	N. & J. Watson	1 120m NW
10	P & E Barnes	890m NW
11	C. Jonkers & J. Favell	940m NW
12	Morris	1 040m NW
13	J. Cope	600m NNW
14	J. Cherry	530m NNW
18	Centennial Fassifern Pty Limited	460m N
20	W. Doherty	420m N
21	Centennial Fassifern Pty Limited	415m N
22	Centennial Fassifern Pty Limited	410m N
23	Centennial Fassifern Pty Limited	410m N
25	Centennial Fassifern Pty Limited	410m N
27	Centennial Fassifern Pty Limited	460m N
28	Centennial Fassifern Pty Limited	470m N
29	Centennial Fassifern Pty Limited	470m N
32	Centennial Fassifern Pty Limited	500m N
33	Centennial Fassifern Pty Limited	510m N
35	Ivanhoe Coal Pty Ltd	2 440m W

7. POTENTIAL NOISE SOURCES AND IMPACTS

There are limited potential impacts for noise whilst in care and maintenance and any noise generated from Pine Dale Mine would be related to maintenance and rehabilitation activities.

7.1 POTENTIAL NOISE SOURCES

The sound power levels of acoustically significant plant and equipment utilised in predictive noise modelling are provided in **Table NM2**.

Table NM3
Acoustically Significant Plant and Equipment

Plant and Equipment	Sound Power Level (dBA)
Crusher	119
CAT988 Front-end loader	110
Komatsu WA500 front-end loader	111
Road trucks	108
CAT 789 (or similar) haul trucks	113
Grader	111
Komatsu PC 2000 excavator	114
Hitachi 1200 excavator	115
Water cart	105
Komatsu 475 Dozer	115
CAT D9 Dozer	110
Drill rig (e.g. Ingersol Rand DM25)	116
Pump	109
Welder	108
Air compressor	99

7.2 POTENTIAL NOISE IMPACTS

The following activities associated with the Pine Dale Coal Mine and Yarraboldy Extension could potentially impact on the surrounding noise environment.

- Construction activities (construction of the amenity bund and new crusher area).
- Clearing of vegetation.
- Stripping of topsoil.
- Drilling operations.
- Overburden removal and emplacement.
- Coal mining.
- Coal processing activities.
- Maintenance activities.
- Pumping / water management activities.

- Product transport.
- Rehabilitation activities.

The results of noise modelling predicted potential minor noise exceedances from the Pine Dale Coal Mine (including the Yarraboldy Extension) at Residences 2 (north and south) relating to the shaping of the final landform in Mining Area C of the existing Pine Dale Coal Mine. With installation of the appropriate management and mitigation measures, no additional exceedances are predicted.

Management and mitigation measures of these potential noise impacts are discussed in Section 6.

8. MANAGEMENT SAFEGUARDS AND MITIGATION MEASURES

A Care and Maintenance Risk Assessment (CMRA) has been undertaken for the Care and Maintenance term (Pine Dale Mine, 2014). Noise emissions were identified to be a low risk due to minimal machinery being operated at the site being utilised for rehabilitation activities only, no blasting or vegetation clearing campaigns being undertaken during the care and maintenance term. As mining activities have now ceased no potential adverse noise impacts are anticipated during the Care and Maintenance term.

8.1 SITE ESTABLISHMENT AND CONSTRUCTION

Activities relating to construction noise include the construction of the noise amenity bund to the south of the mining area which will include the drilling, removal and transport of overburden to the bund emplacement and a bulldozer working on the bund emplacement together with support plant (eg. watercart). To minimise noise emissions from these activities, the following noise management safeguards and mitigation measures will be implemented.

- If a drill rig is operating ahead of the construction of the amenity bund, weathered material will be used to form a bund of approximately 3m in height along the southern edge of the amenity bund footprint prior to the drill rig operating in that area. This smaller bund will then be effectively incorporated into the main amenity bund as it is constructed.
- Equipment supplying overburden to the amenity bund will predominantly work behind the bund (relative to surrounding residences) rather than working in advance of it in order to maximise topographic shielding.
- Hours of operation for construction of the amenity bund will be restricted to 7:00am to 6:00pm Monday to Saturday
- Noise monitoring will be conducted on a regular basis to determine compliance with noise criteria (refer Section 8).
- General operational noise management measures will also be implemented as appropriate (see Section 6.2).

8.2 GENERAL OPERATIONS

The following noise management safeguards and mitigation measures will be implemented during the general operations (including the site establishment and construction period) to ensure that noise emissions are minimised.

- Product transportation via the Castlereagh Highway intersection will be restricted to a maximum of 10 trucks (20 movements) per hour during the day period (7:00am to 6:00pm) and 4 trucks (8 movements) per hour during the evening period (6:00pm to 8:00pm).
- The new crusher will be oriented such that the open side is facing north.
- The dewatering pump will be operating behind a noise barrier at least 1.5m high when operating outside an area without existing topographic shielding (eg. in-pit sump).
- The dewatering pump will operate in the evening or night-time periods.
- Plant used on site should have sound power levels equivalent to or less than those outlined within **Table NM2**.
- Operational and maintenance hours (7:00am to 10:00pm Monday to Saturday and 9:00am to 4:00pm Sundays, excluding public holidays) will be adhered to.
- Equipment will be properly maintained.
- Noise monitoring will be conducted on a regular basis to determine compliance with noise criteria (refer Section 7).

9. NOISE MONITORING PROGRAM

The current Noise Management Plan in accordance with EPL 4911, including quarterly attended noise monitoring, will remain in place for the duration of the care and maintenance term.

9.1 NOISE MONITORING LOCATIONS AND FREQUENCY

Attended monitoring to demonstrate compliance with the noise criteria for construction and removal of the amenity bund and operational noise criteria will continue to be undertaken on a quarterly basis at the monitoring locations shown on **Figure NM2**. Traffic noise monitoring will also be undertaken on a quarterly basis when product is being transported via the Castlereagh Highway at monitoring locations NM1 and NM2 (see **Figure NM2**). In the event of a recorded non-compliance or a complaint is received from the community, additional monitoring would be undertaken as required.

In the event of a complaint or in order to supplement the attended measurements, unattended may also be undertaken using a noise logger deployed at the noise monitoring locations or other locations as deemed appropriate.

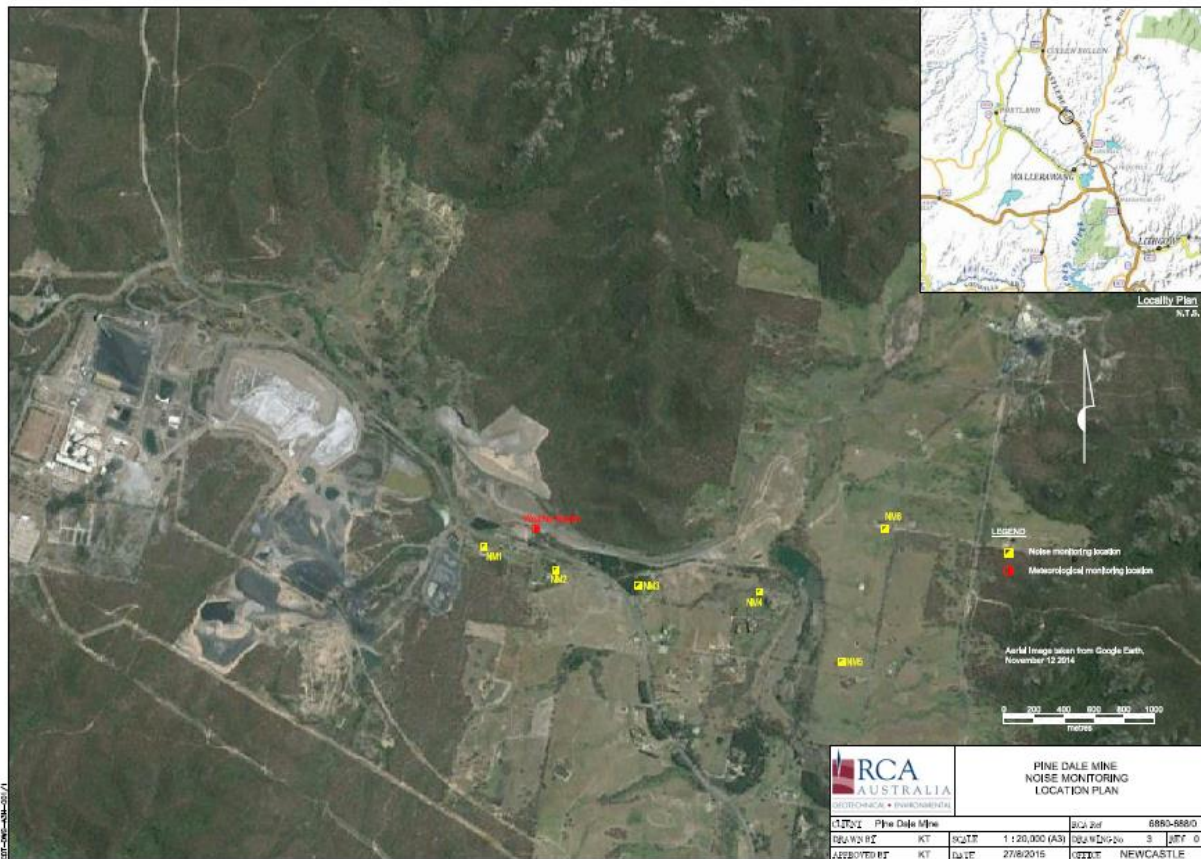
9.2 NOISE MONITORING PROCEDURES

9.2.1 General Requirements

Noise monitoring will be undertaken in accordance with the requirements outlined in AS 1055-1997 *Acoustics - Description and Measurement of Environmental Noise* and the *Environmental Noise Control Manual* (EPA, 1994) or their current versions.

All acoustic instrumentation employed throughout the monitoring program will comply with the requirements of AS IEC 61672-2004, *Electroacoustics - Sound Level Meters* (or current version) and will carry current NATA or manufacturer calibration certificates. Instrument calibration will be checked before and after each survey, with the variation in calibrated levels not exceeding ± 0.5 dBA.

Figure NM2 Noise monitoring locations



9.2.2 Operational Noise Surveys

Attended noise surveys will be conducted by a suitably qualified consultant during the approved hours of operation with at least two measurements taken during one day at each monitoring location, so that noise levels during the full range of operating times / activities are monitored. The maximum (L_{Amax}), average maximum (L_{A10}) and the energy equivalent (L_{Aeq}) intrusive noise level from mining operations over a 15 minute measurement period will be

recorded. In addition, the operator will quantify and characterise the overall levels of ambient noise (i.e. L_{Amax} , L_{A1} , L_{A10} , L_{A50} , L_{A90} , L_{A99} , L_{Amin} and L_{Aeq}) over the 15 minute measurement interval.

Any significant mine generated noise sources (i.e. haul trucks, dozers, etc) will be recorded during attended noise monitoring surveys together with any extraneous noise sources. In addition, the Company will maintain copies of the relevant fixed plant and mobile equipment mining operating shift logs and mining locations for inclusion in the noise monitoring report.

In the event of an exceedance of the relevant noise emission criteria the Manager Mining Engineering will be promptly informed of the location, the margin of exceedance and the source of emission. The noise, weather and plant operating data will be documented and forwarded to the Manager Mining Engineering so that an appropriate response can be made (refer to Section 8).

9.2.3 Traffic Noise Surveys

When transport operations are being undertaken via the Castlereagh Highway during quarterly attended operational noise surveys, measurements will also be made at monitoring locations NM1 and NM2 to quantify the traffic noise impact from the Castlereagh Highway as a result of the Pine Dale Coal Mine transport operations.

Traffic noise on the Castlereagh Highway will be assessed as a 15 hour equivalent continuous noise level ($L_{Aeq15hr}$) over the period from 7:00am to 10:00pm. However, transport operations are only approved to operate between 7:00am and 8:00pm Monday to Saturday and therefore, cannot be directly assessed through recording of a 15 hour equivalent continuous noise level.

In order to quantify the traffic noise levels associated with transport operations on the Castlereagh Highway the noise contribution from the individual vehicles from the Pine Dale Coal Mine operations will be measured during the attended surveys at monitoring location NM1 and NM2 and identified on the Time Splice (Time Coding) for later analysis.

A record of the date and time of all product vehicles entering and exiting the mine over the period via the Castlereagh Highway will be provided by Enhance Place Pty Limited to the acoustical consultant. The noise exposure attributable to Pine Dale Coal Mine transport operations measured during the attended surveys at NM1 and NM 2 will then be used in conjunction with the date and time record for the product vehicles to calculate the effect on the $L_{Aeq15\text{ hour}}$ noise level. The impact will be assessed by comparing the noise exposure at NM1 and NM2 during highway transport operations with baseline $L_{Aeq(15\text{ hour})}$ data which have been obtained prior to the commencement of operations at Yarraboldy using an unattended noise logger.

9.2.4 Supplementary Noise Survey

In the event of a complaint or in order to supplement the quarterly noise measurements, unattended continuous noise logging may be conducted to quantify overall representative noise levels resulting from operational or transport emissions and other environmental noise sources.

9.3 METEOROLOGICAL MONITORING

All noise measurements will be accompanied by both qualitative description (including cloud cover) and quantitative measurements of prevailing local meteorological conditions throughout the survey period.

Local meteorological conditions will be measured using the automatic weather station situated on the Pine Dale Mine which records wind speed, wind direction, rainfall and temperature at 15 minute intervals. Meteorological measurements will be guided by the requirements of AS 2923-1987 *Ambient Air-Guide for Measurements of Horizontal Wind for Air Quality Applications* and the *Approved Methods for Sampling of Air Pollutants in New South Wales guideline* (or their latest versions).

10. NOISE MONITORING PROTOCOL

10.1 REVIEW AND REPORTING OF MONITORING RESULTS

A noise monitoring report will be prepared by the attending consultant following each monitoring event. The monitoring report will be reviewed by the Manager Mining Engineering and a copy included within the Annual Environmental Management Report (AEMR).

A summary of any exceedance and noise response measures will also be documented within the respective AEMR and any non-compliance documented in the Annual Return for Environment Protection Licence 4911.

10.2 NOISE MONITORING TRIGGERS AND RESPONSE MEASURES

The following responses would be triggered by the results of noise monitoring. It is noted any noise complaints received would be handled in accordance with the Complaints Receipt and Response Procedures (see Section 9).

10.2.1 All Locations are Compliant with Noise Criteria

- Operations and monitoring to continue as normal.

10.2.2 Single / Short Term Exceedance of Noise Criteria

In the event that noise emissions exceed the noise treatment criteria specified in *Schedule 3 Condition 3* of PA 10_0041 and the likely source is related to the mine operations:

- where possible, the activity causing the exceedance will cease immediately and actions will be formulated to reduce the emitting potential of the source of the elevated emissions such as addition of attenuation measures to plant and equipment or modification of the conduct of a particular activity. It is noted the actions formulated and their timeframe for implementation will be dependent on the type of activity and nature of the exceedance;
- the DPE and OEHL will be notified as soon as practicable and a report will be prepared and submitted to the DPE and OEHL within 7 days of the exceedance in accordance with *Schedule 5 Condition 6* of PA 10_0041;

- in accordance with *Schedule 4 Condition 2* of PA 10_0041, within 2 weeks of obtaining the monitoring results, the affected landowner will be notified in writing of the exceedance, provided with a copy of the monitoring report and notified that, in the event of an additional successive exceedance, they are entitled to request additional noise mitigation measures be installed at their residence;
- any nominated mitigation measures to minimise the potential for future exceedances will be completed; and
- ongoing monitoring, at appropriate intervals will be undertaken to assess the effectiveness of the mitigation measures.

10.2.3 Continued Exceedances or Landholder Dispute

In the event of ongoing exceedances of the noise treatment criteria (*Schedule 3 Condition 3*) or exceedances of the of noise acquisition criteria (*Schedule 3 Condition 2*) and following the implementation of all reasonable measures on site, the Company would attempt to negotiate an appropriate arrangement with the land owner(s) to further mitigate or compensate for the noise impacts.

In the event a negotiated agreement is reached, the DPE and OEH would be informed in writing of the terms of the agreement.

In the event that a negotiated agreement cannot be reached the matter would be referred to the Director-General of the Department of Planning and Infrastructure for resolution through the independent review process outlined within *Schedule 4 Condition 3 to 5* of PA 10_00741.

Should it be determined that the exceedances are the result of the mine and the landowner requests in writing that their property be acquired, the land acquisition procedure outlined within *Schedule 4 Conditions 6 and 7* of PA 10_0041 would be followed.

11. COMPLAINTS HANDLING AND REPSONSE

In order to effectively manage any requests for information or respond to any public concerns in relation to the site operations at the Pine Dale Coal Mine, the following systems will be maintained.

- The Company will supply OEH and DPE with up to date names and appropriate contact numbers for the Pine Dale Coal Mine’s Manager Mining Engineering and one other senior staff member.
- An Environmental Hotline / Complaints Phone Number will be maintained to allow contact with the Company in relation to any environmental matter including those relating with noise issues. Currently the Environmental Hotline / Complaints Phone Number is 02 63 55 1761.

Any noise related complaints will be received and acted upon in accordance with the complaints handling process outlined within the Environmental Management Strategy. In addition to the standard complaints response procedure, the following contingency measures will also be undertaken if a noise complaint is received relating to the Pine Dale Coal Mine.

- Where possible, the noise source that has caused the complaint will be identified. This will be undertaken, if possible, in consultation with the complainant. In the

event the noise is a continuous or re-current noise, noise monitoring using either attended or unattended methods may be undertaken.

- If a noise exceedance is identified as a result of monitoring, the response measures outlined within Section 10.2 of this NMP will be implemented. If monitoring does not indicate exceedance, on-site noise mitigation measures relating to the identified activity will be reviewed and, where practicable, additional measures implemented to address the noise complaint.
- Following the adoption / modification of any additional noise mitigation, further attended or unattended noise monitoring may be undertaken at the complainant's residence to measure the success of the mitigation strategy.

In the event that a complaint cannot be resolved despite monitoring indicating compliance, the matter would be referred to the dispute resolution process outlined within the Environmental Management Strategy.

12. RESPONSIBILITIES AND ACCOUNTABILITES

The procedures and management measures presented in the NMP will be made available to all members of the workforce on site. The responsible workforce will be made aware of the procedures through inductions, training (as required) and regular toolbox talks / meetings. The ultimate responsibility for noise management is the Manager Mining Engineering.

Table NM3 outlines the accountable positions and tasks relating to noise management at the Pine Dale Coal Mine.

Table NM4
Accountable Positions and Tasks

Position	Accountable Task
Manager Mining Engineering	<ul style="list-style-type: none"> • Ensure approved operational hours are adhered to. • Coordinate noise monitoring. • Report any exceedances of relevant noise criteria to DPE and OEH as soon as possible and coordinate a written report within 7 days. • Notify employees of any additional noise mitigation measures to be implemented as a result of complaints or exceedances. • Ensure that the automated weather station is operating correctly and contact a technician should any faults be identified (e.g. missing data records). • Accurately report noise monitoring data in the AEMR and Annual Return. • Review this plan on an annual basis and revise if required.
Plant Operator	<ul style="list-style-type: none"> • Ensure any additional noise mitigation measures are implemented as directed by the Manager Mining Engineering.
All Employees	<ul style="list-style-type: none"> • Record all required information in the event a noise complaint is received (refer to Environmental Management Strategy).
The Company Conducting Noise Monitoring	<ul style="list-style-type: none"> • Ensure noise monitoring is undertaken in accordance with these procedures and relevant Australian Standards. • Analyse noise and relevant weather monitoring data to ensure compliance. • Complete a quarterly noise monitoring report and compliance assessment during operations. • Inform the Manager Mining Engineering immediately should any non-compliances be identified.