



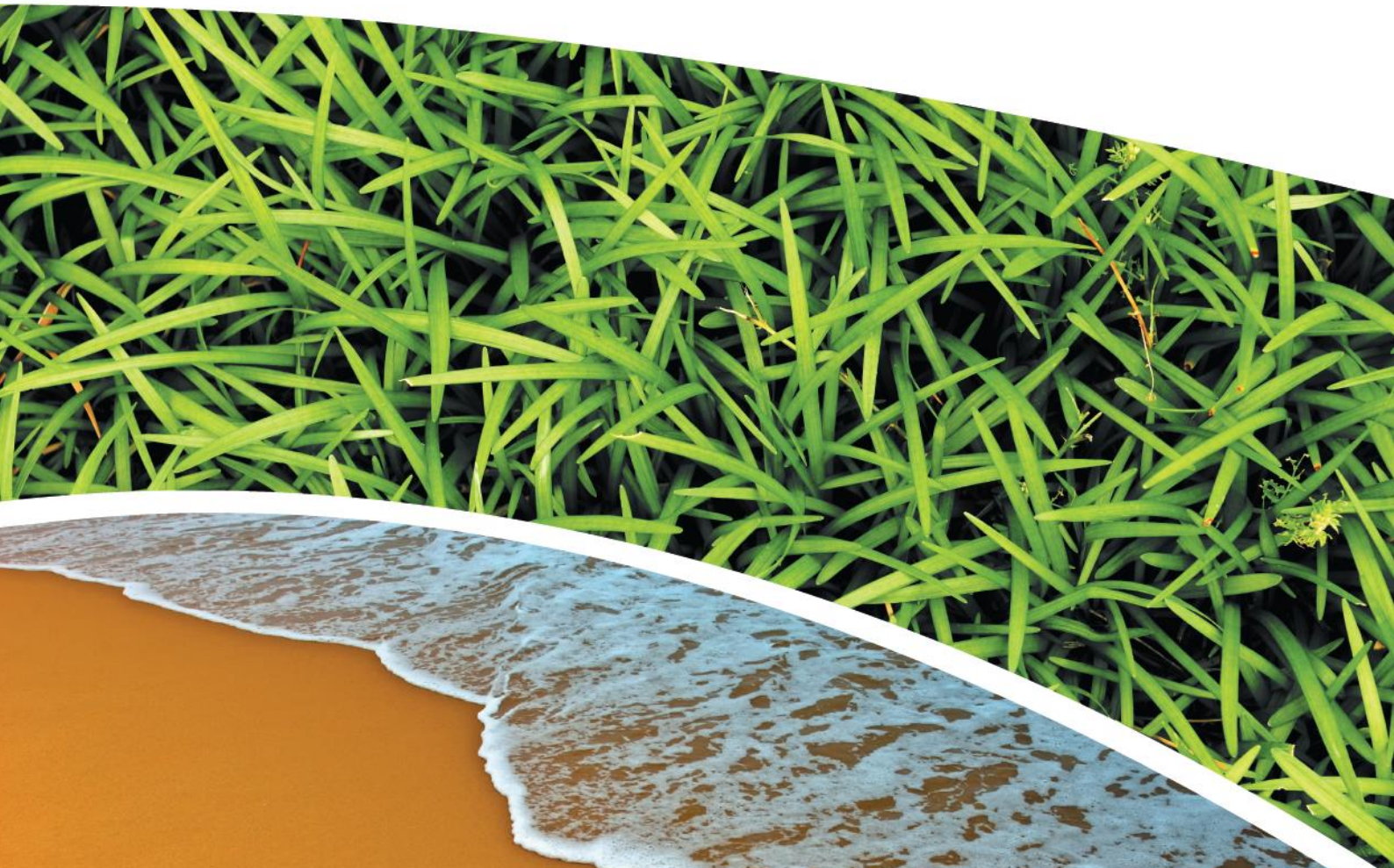
**AIR, WATER AND METEOROLOGICAL MONITORING – NOVEMBER
2018**

PINE DALE MINE, BLACKMANS FLAT

Prepared for Pine Dale Mine Community Consultative Committee

Prepared by RCA Australia

RCA ref 6880-1782/0



RCA AUSTRALIA

ABN 53 063 515 711

92 Hill Street, CARRINGTON NSW 2294


Telephone: +61 2 4902 9200

Facsimile: +61 2 4902 9299

Email: administrator@rca.com.au

Internet: www.rca.com.au

This document is and shall remain the property of RCA Australia. The document may only be used for the purpose for which it was commissioned and in accordance with the Terms of Engagement. Unauthorised use of this document in any form whatsoever is prohibited.

DOCUMENT STATUS						
Rev No	Comment	Author	Reviewer	Approved for Issue (Project Manager)		
				Name	Signature	Date
/0	Final	C Rocher	K Shaw	C Rocher		17.12.2018

DOCUMENT DISTRIBUTION				
Rev No	Copies	Format	Issued to	Date
/0	1	Electronic (email)	Pine Dale Mine – Graham Goodwin graham.goodwin@energyaustralia.com.au	17.12.2018
/0	1	Electronic (email)	Energy Australia- Mark Frewin mark.frewin@energyaustralia.com.au	17.12.2018
/0	1	Electronic (email)	Lithgow City Council – Andrew Muir andrew.muir@lithgow.nsw.gov.au	17.12.2018
/0	1	Electronic report	RCA – job archive	17.12.2018



Contents

1	INTRODUCTION	1
2	ANALYTICAL PROCEDURES.....	1
3	WATER MONITORING RESULTS.....	2
	3.1 GROUNDWATER.....	2
	3.2 SURFACE WATER MONITORING	4
4	AIR QUALITY RESULTS	4
	4.1 HIGH VOLUME AIR SAMPLERS (HVAS).....	4
	4.1.1 TSP SUMMARY	5
	4.1.2 PM ₁₀ SUMMARY	5
	4.2 DEPOSITIONAL DUST MONITORING	5
	4.2.1 ALLOWABLE DEPOSITIONAL DUST LIMITS	6
5	METEOROLOGICAL MONITORING.....	6
6	BLASTING RESULTS.....	6
7	NOISE MONITORING RESULTS.....	6
8	OPERATIONAL ACTIVITIES	6
9	SUMMARY	7

APPENDIX A

MONITORING LOCATIONS

APPENDIX B

DEPOSITIONAL DUST AND HVAS GRAPHS

APPENDIX C

METEOROLOGICAL DATA

RCA ref 6880-1782/0

17 November 2018

Enhance Place Pty Ltd
PO Box 202
WALLERWANG NSW 2845

Attention: Mr Graham Goodwin

Geotechnical Engineering

Engineering Geology

Environmental Engineering

Hydrogeology

Construction Materials Testing

Environmental Monitoring

Sound & Vibration

Occupational Hygiene

**REPORT COMPILED FOR COMMUNITY CONSULTATIVE COMMITTEE
DETAILING AIR, WATER AND METEOROLOGICAL MONITORING AT PINE DALE
MINE
NOVEMBER 2018**

1 INTRODUCTION

This report presents the results of air, water and meteorological monitoring undertaken at Pine Dale Mine, Blackmans Flat during the month of November 2018.

Air and water samples were collected by RCA Laboratories – Environmental staff. Meteorological data was obtained from the site weather station.

This report satisfies the requirements to monitor environmental parameters as presented in the Pine Dale Mine Environmental Protection Licence (EPL 4911).

2 ANALYTICAL PROCEDURES

The analytical procedures used by RCA Laboratories – Environmental (NATA Accreditation number 9811) are based on established internationally recognised procedures such as APHA and Australian Standards. Analytical test methods are detailed in **Table 1**.

Table 1 Analytical Test Methods

Analysis	Method	Units	Analysing Laboratory	NATA Accreditation Status
Determination of Suspended Particulate Matter	ENV-LAB003	$\mu\text{g}/\text{m}^3$	RCA Laboratories – Environmental	NATA Analysis
Determination of Particulate Matter – Deposited Matter	ENV-LAB004	$\text{g}/\text{m}^2\cdot\text{month}$	RCA Laboratories – Environmental	NATA Analysis
pH	ENV-LAB006	pH	RCA Laboratories – Environmental	NATA Analysis
Conductivity	ENV-LAB010	$\mu\text{S}/\text{cm}$	RCA Laboratories – Environmental	NATA Analysis
Total Suspended Solids	ENV-LAB009	mg/L	RCA Laboratories – Environmental	NATA Analysis
Turbidity	ENV-LAB037	NTU	RCA Laboratories - Environmental	NATA Analysis
Oil and Grease	ENV-LAB022	mg/L	RCA Laboratories - Environmental	Non-NATA Analysis
Major Anions (Alkalinity, Cl, SO_4)	ED037, ED041, ED045	mg/L	ALS	NATA Analysis
Major Cations (Ca, Mg, Na, K)	ED093	mg/L	ALS	NATA Analysis
Dissolved Metals	EG020F	mg/L	ALS	NATA Analysis

ALS Environmental has been used to obtain analysis of anions, cations and dissolved metals (NATA Accreditation number 825).

3 WATER MONITORING RESULTS

3.1 GROUNDWATER

A total of two (2) groundwater samples were collected from within the Pine Dale Mine site during November 2018. Water quality analysis results are shown in **Table 2**. Groundwater monitoring locations are shown in **Appendix A**.

Table 2 Groundwater Analysis Results

Analysis	Units	P6	P7
Sample Number	-	11186880011	11186880012
Date Sampled	-	08/11/18	08/11/18
Time Sampled	-	15:15	14:58
Depth to Water from Surface	m	25.38	7.24
Water Level (AHD)	m	891.57	887.16
Temperature	°C	18.0	18.0
pH	pH	6.22	6.40
Conductivity	µS/cm	1520	718
Turbidity	NTU	67	
Dissolved Oxygen	mg/L	2.0	
Total Suspended Solids	mg/L	71	
Oil and Grease	mg/L	<5	
Bicarbonate Alkalinity (CaCO ₃)	mg/L	68	174
Total Alkalinity (CaCO ₃)	mg/L	68	174
Sulphate (as SO ₄)	mg/L	722	36
Chloride	mg/L	45	104
Calcium	mg/L	145	37
Magnesium	mg/L	63	35
Sodium	mg/L	61	43
Potassium	mg/L	19	7
Cobalt (dissolved)	mg/L	0.054	
Manganese (dissolved)	mg/L	2.59	
Nickel (dissolved)	mg/L	0.086	
Zinc (dissolved)	mg/L	0.03	
Iron (dissolved)	mg/L	34	<0.05
Trigger Levels			
pH trigger level ^	pH	6.2 – 8.0	6.3 – 8.0
Conductivity trigger level	µS/cm	1180	852
Water Level (AHD) #	m	887.90	883.28

■ Indicates analysis was not required.

^ pH trigger level is exceeded if the pH is outside the nominated range

Water Level trigger is exceeded if the AHD water level drops below the nominated trigger level.

Results shown in **bold italics** indicates exceedance of trigger level.

3.2 SURFACE WATER MONITORING

Quarterly surface water monitoring was undertaken in November 2018. Results are shown in **Table 3**.

Table 3 *Surface Water Results*

ANALYSIS	UNITS	EPA Point 2 Neubecks Ck Upstream	EPA Point 3 Neubecks Ck Downstream	EPA Point 14 Coxs River Downstream
Sample Number	-	11186880009	11186880004	11186880010
Date Sampled	-	8/11/2018	8/11/2018	7/11/2018
Time Sampled	-	11:47	11:15	13:30
Temperature	°C	16.0	16.9	20.1
pH	pH	7.22	7.55	8.69
Conductivity	µS/cm	130	121	113
Sulfate	NTU	482	465	57
Dissolved Iron	mg/L	0.07	0.14	<0.05
Total Suspended Solids	mg/L	<5	6	7
Turbidity	mg/L	<1	<1	20
Trigger Levels				
pH	pH	7.1 – 8.0	6.4 – 8.0	7.5 – 8.0
Conductivity	µS/cm	2055	2223	1166
Total Suspended Solids	mg/L	30	30	30

Results shown in ***bold italics*** indicates exceedance of trigger level.

4 AIR QUALITY RESULTS

4.1 HIGH VOLUME AIR SAMPLERS (HVAS)

Monitoring of particulate matter less than 10 micrometres (PM₁₀) and total suspended particulates (TSP) is undertaken at Pine Dale Mine using High Volume Air Samplers (HVAS). HVAS at this facility conform to AS/NZS 3580.9.3:2015, AS/NZS 3580.9.6:2015 and AS/NZS 3580.1.1:2016. The locations of these HVAS units are shown in **Appendix A**.

HVAS Total Suspended Particulate results are shown in **Table 4**. PM₁₀ results are shown in **Table 5**. HVAS Monitoring locations are shown in **Appendix A**. Graphical HVAS result presentations are shown in **Appendix B**.

Table 4 Total Suspended Particulates (TSP)

Run Date	TSP ($\mu\text{g}/\text{m}^3$)	Sample Number	Filter Number	Date Filter Off	Time Filter Off	Field Tech	Hours Run
03-Nov-18	38	11186880033	9589227	08-Nov-18	9:15	Client	24.10
09-Nov-18	40	11186880035	9589225	12-Nov-18	6:50	Client	24.36
15-Nov-18	15	11186880037	9589300	19-Nov-18	6:30	Client	24.00
21-Nov-18	70	11186880039	9589224	22-Nov-18	7:10	Client	24.00
27-Nov-18	38	11186880041	9589298	28-Nov-18	11:12	Client	24.00

Table 5 Suspended Particulate Matter <math> < 10 \mu\text{m}</math> (PM_{10})

Run Date	PM_{10} ($\mu\text{g}/\text{m}^3$)	Sample Number	Filter Number	Date Filter Off	Time Filter Off	Field Tech	Hours Run
03-Nov-18	15	11186880034	9589228	08-Nov-18	9:16	Client	24.00
09-Nov-18	7	11186880036	9589226	12-Nov-18	6:53	Client	24.70
15-Nov-18	5	11186880038	9586301	19-Nov-18	6:35	Client	24.00
21-Nov-18	49	11186880040	9589293	22-Nov-18	7:15	Client	24.00
27-Nov-18	11	11186880042	9589299	28-Nov-18	11:15	Client	24.00

4.1.1 TSP SUMMARY

The NSW EPA Annual Mean TSP allowable limit is $90\mu\text{g}/\text{m}^3$. All TSP HVAS results recorded during this monitoring period are in compliance with consent conditions, as the *current rolling annual mean* (December 2017 to November 2018) for the TSP unit is $23.5\mu\text{g}/\text{m}^3$. The twelve monthly graph is provided in **Appendix B**.

4.1.2 PM_{10} SUMMARY

The NSW EPA twenty four hour maximum PM_{10} allowable limit is $50\mu\text{g}/\text{m}^3$. The EPA Annual Mean PM_{10} allowable limit is $25\mu\text{g}/\text{m}^3$. All PM_{10} HVAS results recorded during this monitoring period conform to consent conditions, as the *current rolling annual mean* for the PM_{10} unit is $10.5\mu\text{g}/\text{m}^3$, which is below the allowable annual limit (refer **Appendix B**). The 24 hour maximum allowable limit of $50\mu\text{g}/\text{m}^3$ was not exceeded on any run during the month of November 2018.

4.2 DEPOSITIONAL DUST MONITORING

The depositional dust monitoring exposure period for November 2018 was 8 October – 7 November 2018. Depositional dust gauges at this facility conform to AS/NZS 3580.10.1:2016 and AS/NZS 3580.1.1:2016. Depositional dust monitoring results are shown in **Table 6**. Depositional dust monitoring locations are shown in **Appendix A**.

Depositional dust gauge D2 is situated on private property; this gauge was removed at the request of the property owner in March 2018 and monitoring has therefore ceased at this location.

Table 6 *Depositional Dust Monitoring*

Deposit Gauge	Number of Days	Notes	Insoluble Solids	Ash	Combustible Matter
D1	30	IT	2.8	1.7	1.1
D3	30	I	2.1	1.3	0.8
D4	30	IT	2.2	1.2	1.0
D5	30	I	1.3	0.8	0.5
D6	30	I	2.1	1.6	0.5

All units are g/m²/month

I indicates insects noted to be present in sample.

T indicates tree litter in samples (eg. leaves, twigs, gum nuts).

ND No data available

4.2.1 ALLOWABLE DEPOSITIONAL DUST LIMITS

The EPA long term (annual average) deposited dust limit is 4g/m² per month. The rolling annual depositional dust results for all sites within the period (December 2017 – November 2018) are in compliance with consent conditions. The annual average for dust gauges D1, D3, D4, D5 and D6 are all less than or equal to 1.1g/m² per month. The depositional dust gauge graphs are provided in **Appendix B**.

5 METEOROLOGICAL MONITORING

Pine Dale Mine records meteorological data continuously via an onsite weather station. Details of the weather data recorded during the period 1 to 30 November 2018 are shown in **Appendix C**.

Data availability during this period was 100%.

6 BLASTING RESULTS

No blasting was undertaken during this month as mining operations have ceased since the end of March 2014.

7 NOISE MONITORING RESULTS

Quarterly noise monitoring is required to be undertaken on a quarterly basis. The fourth quarter monitoring is required to be undertaken in the October – December 2018 period. Quarter 4 monitoring was undertaken in October 2018. Noise monitoring results are shown in RCA Australia Noise Monitoring Report *13856-402.0 Pine Dale Mine Operation Attended Noise – October 2018*.

8 OPERATIONAL ACTIVITIES

All of the approved minable reserves at the Pine Dale Mine have now been exhausted. Operational mining and the last coal sales ceased as of the end of March 2014.

All former operators have been made redundant; however some statutory positions still remain. Pine Dale Mine has been placed in care and maintenance since April 2014.

9 SUMMARY

During the month of November 2018 environmental monitoring results were found to be generally in compliance with EPL 4911 with the exception of:

- Electrical conductivity in groundwater sample P6 was in excess of the of the site specific trigger level.

Rolling annual averages from both the TSP and PM₁₀ High Volume Air Samplers are currently well below the EPA Annual Mean TSP and PM₁₀ criterion of 90µg/m³ and 25µg/m³ respectively. Currently there are no depositional dust gauge results which are greater than the EPA Long Term (annual average) criteria of 4g/m².month based upon a rolling average of the past 12 months.

Meteorological monitoring was undertaken for the entire month of November with 100% data capture.

Pine Dale Mine ceased operation in March 2014 and therefore no blasting occurred at the site. No noise monitoring was undertaken during November 2018.

This report shall only be presented in full and may not be used to support objectives other than those stated in the report without written permission from RCA Australia.

The information in this report is considered accurate at the date of issue with regard to the current conditions of the site. Conditions can vary across any site that cannot be explicitly defined by investigation.

Yours faithfully

RCA AUSTRALIA



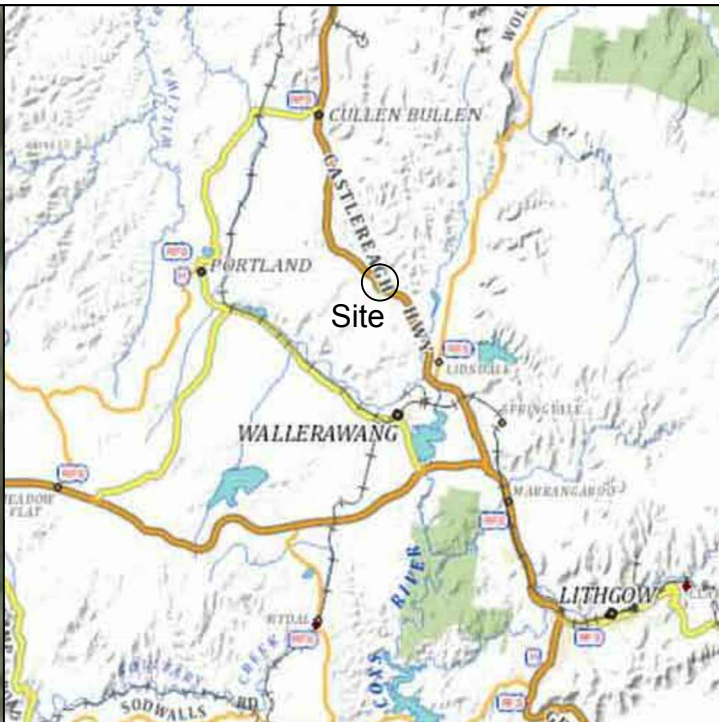
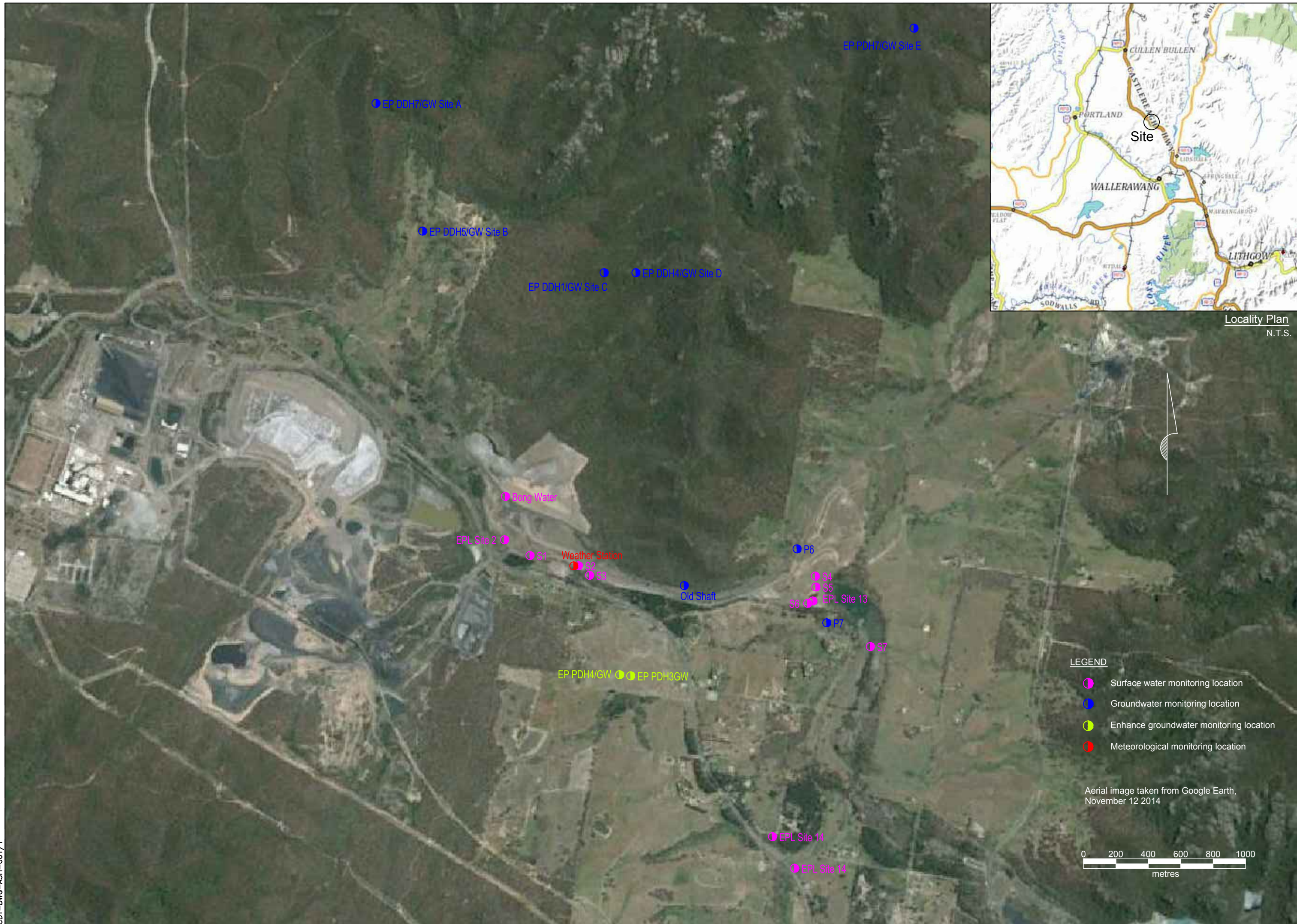
Carmen Rocher
Environmental Engineer



Katy Shaw
Senior Environmental Scientist

Appendix A

Monitoring Locations

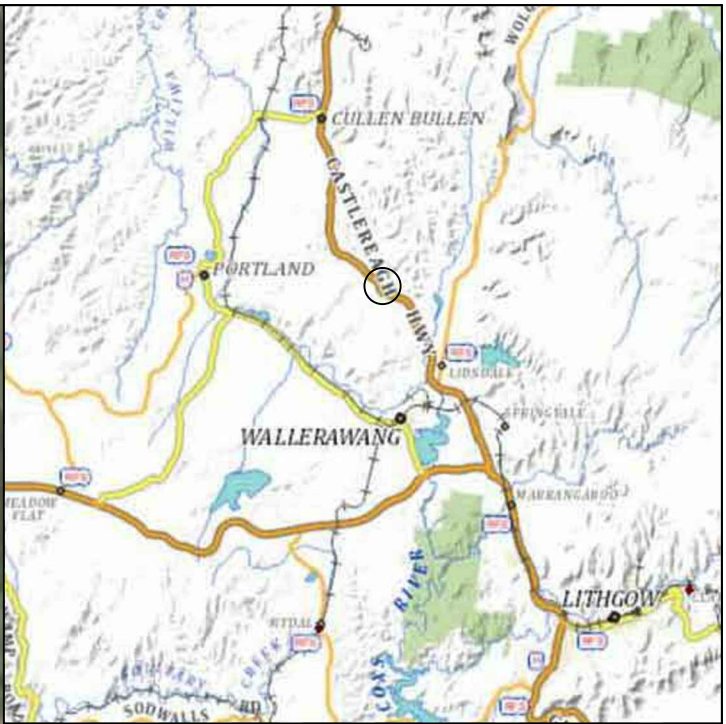
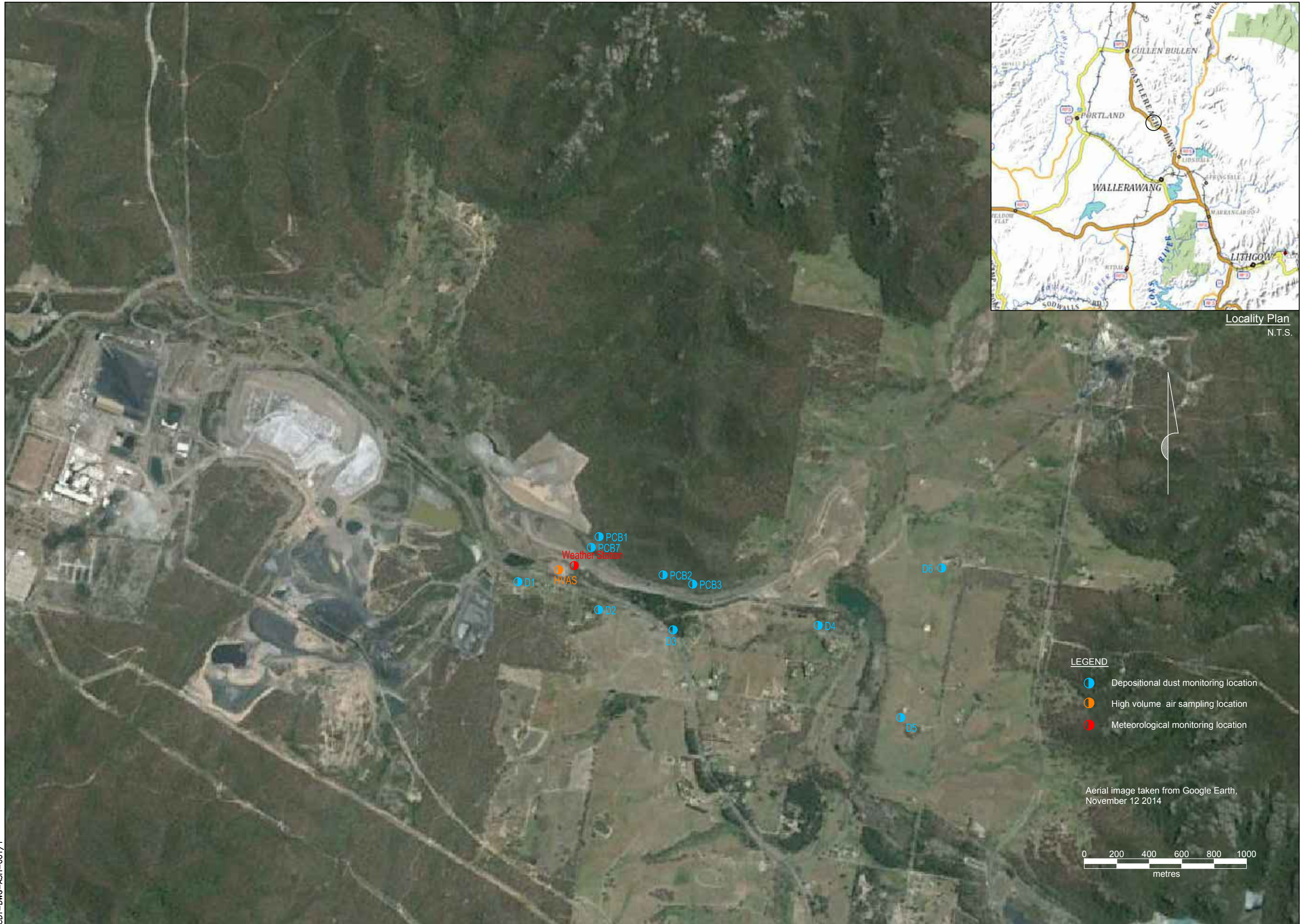


Locality Plan
N.T.S.

- LEGEND**
- Surface water monitoring location
 - Groundwater monitoring location
 - Enhance groundwater monitoring location
 - Meteorological monitoring location

Aerial image taken from Google Earth,
November 12 2014





Locality Plan
N.T.S.

LEGEND

- Depositional dust monitoring location
- High volume air sampling location
- Meteorological monitoring location

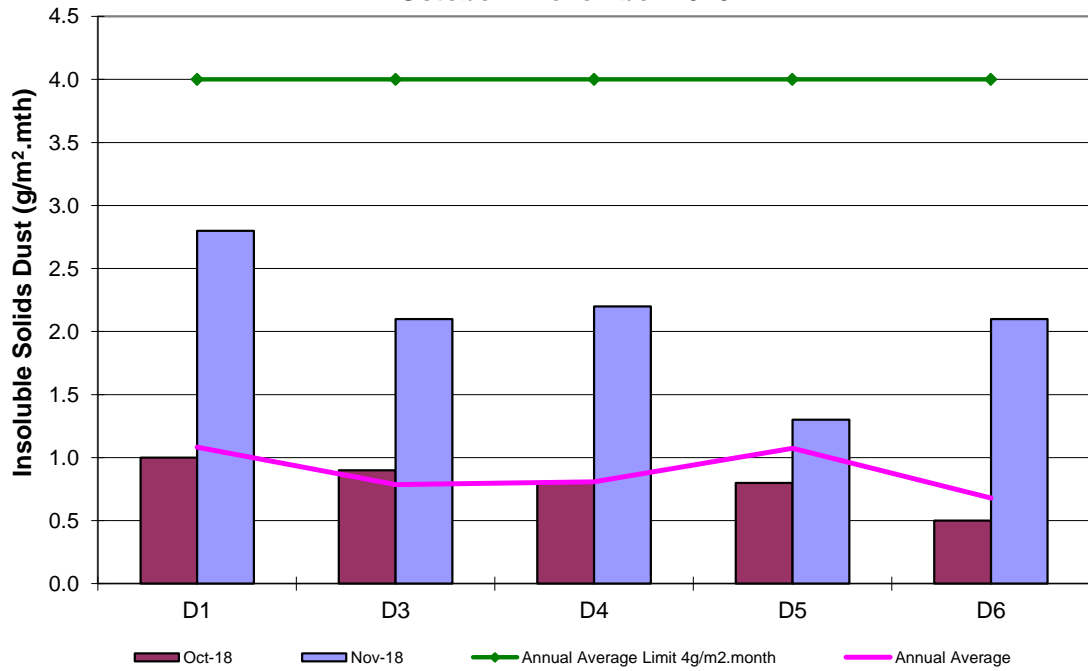
Aerial image taken from Google Earth,
November 12 2014



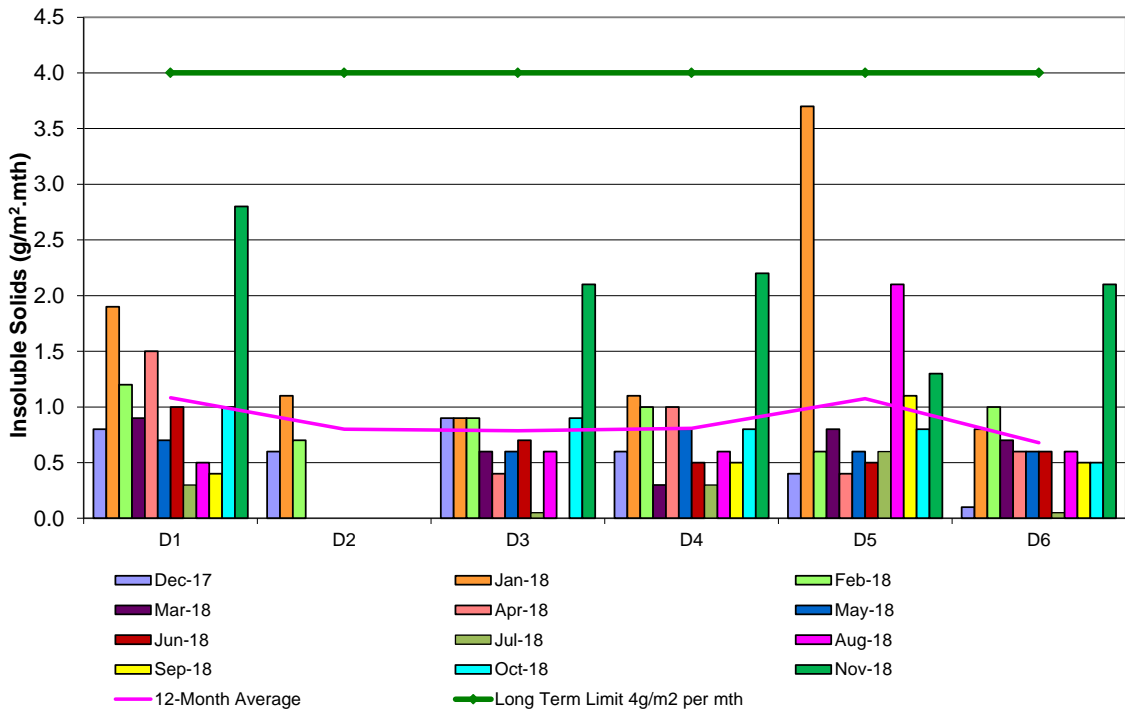
Appendix B

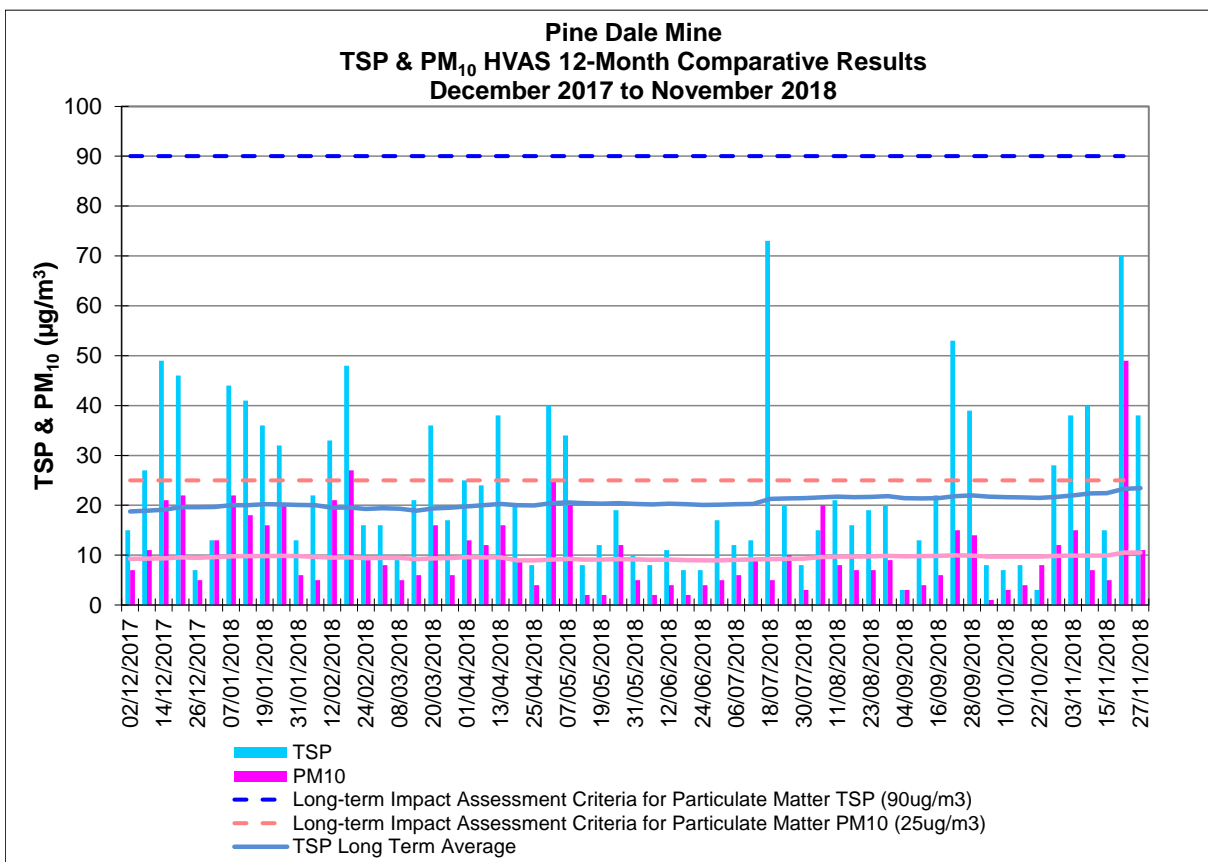
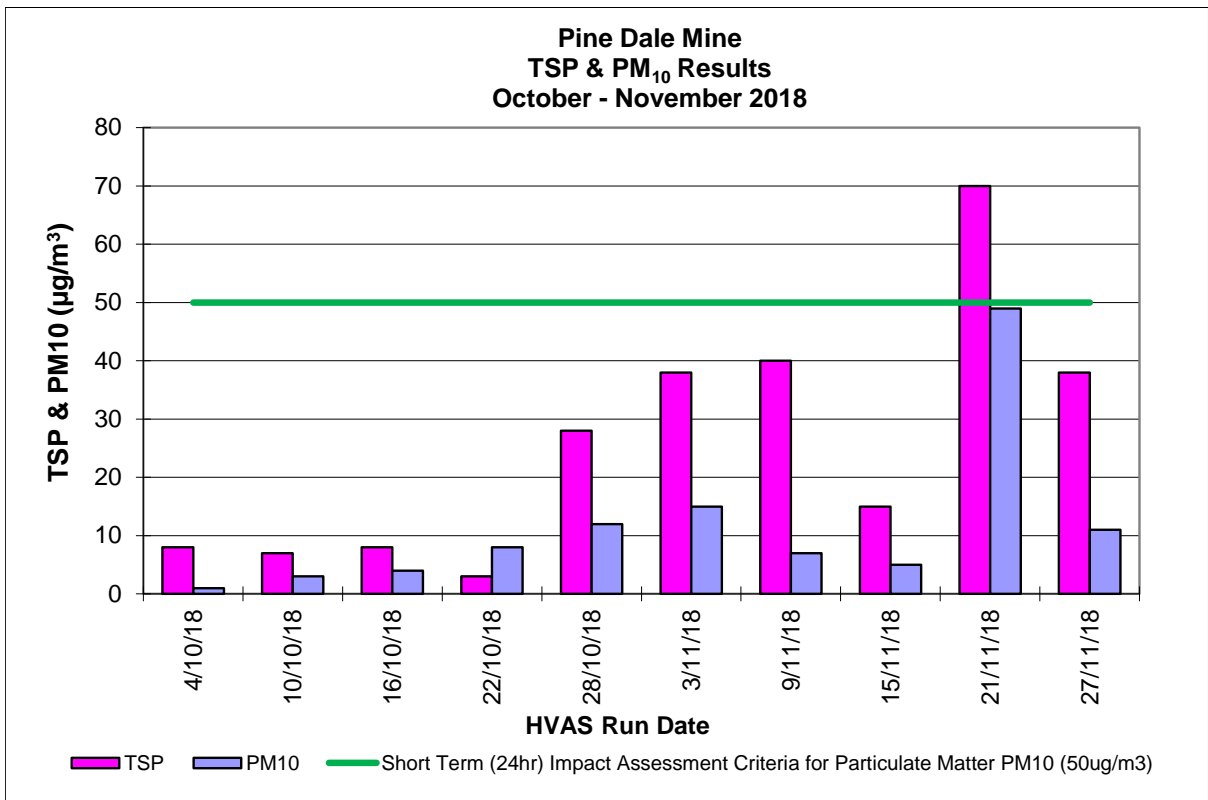
Depositional Dust and HVAS Graphs

**Pine Dale Mine
Depositional Dust Gauge Comparative Results
October - November 2018**



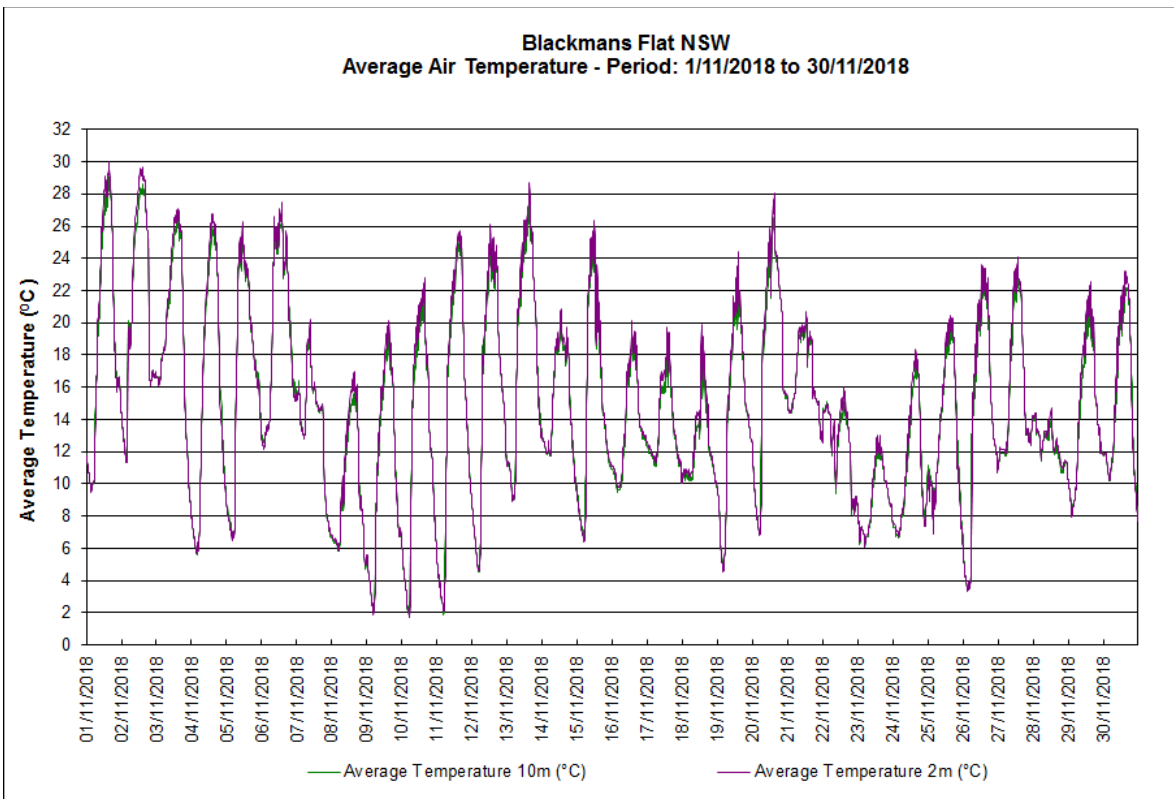
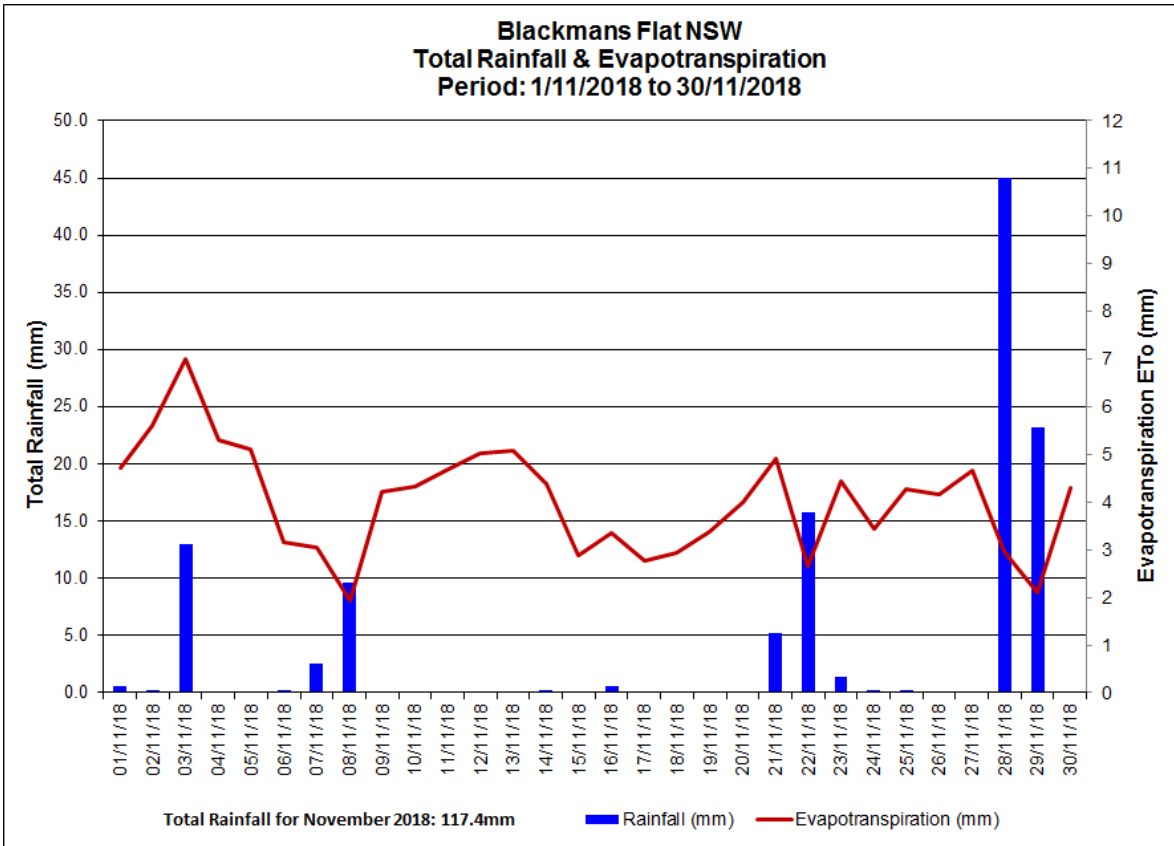
**Pine Dale Mine
Deposited Matter - Insoluble Solids 12 Months Comparative Results
December 2017 to November 2018**

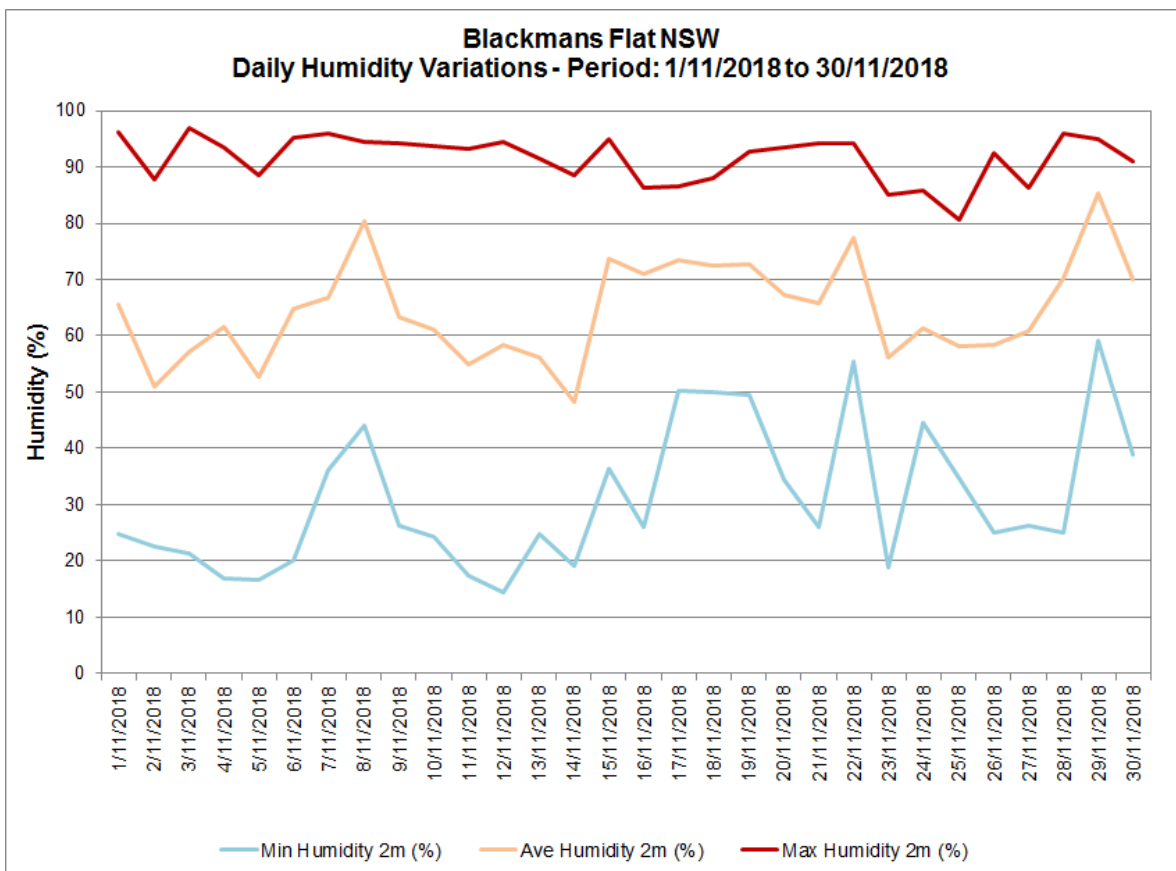
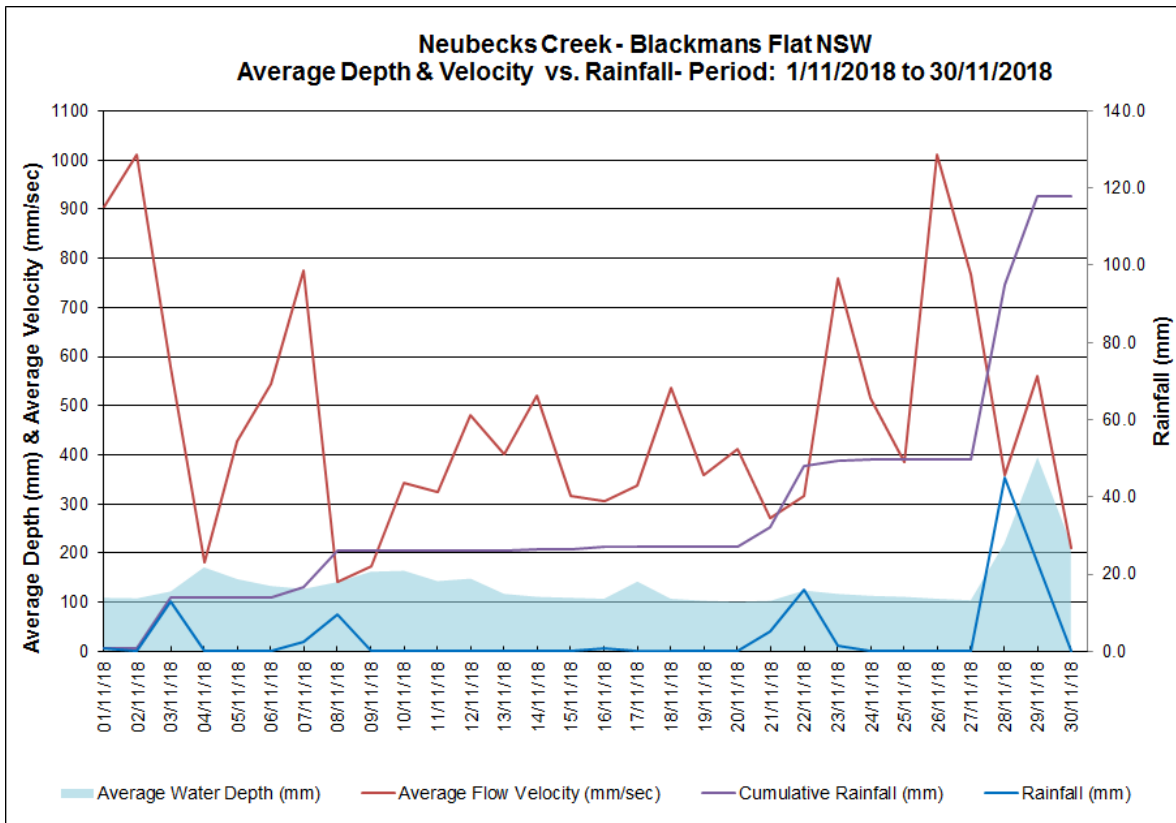


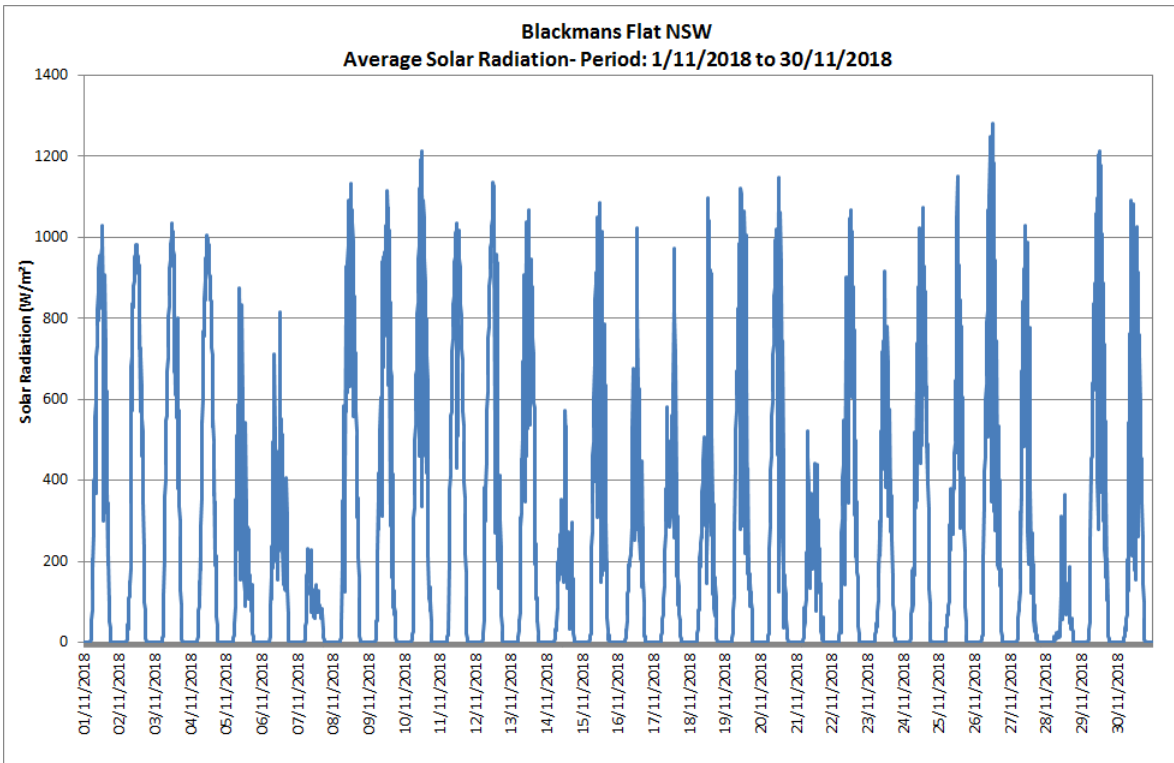
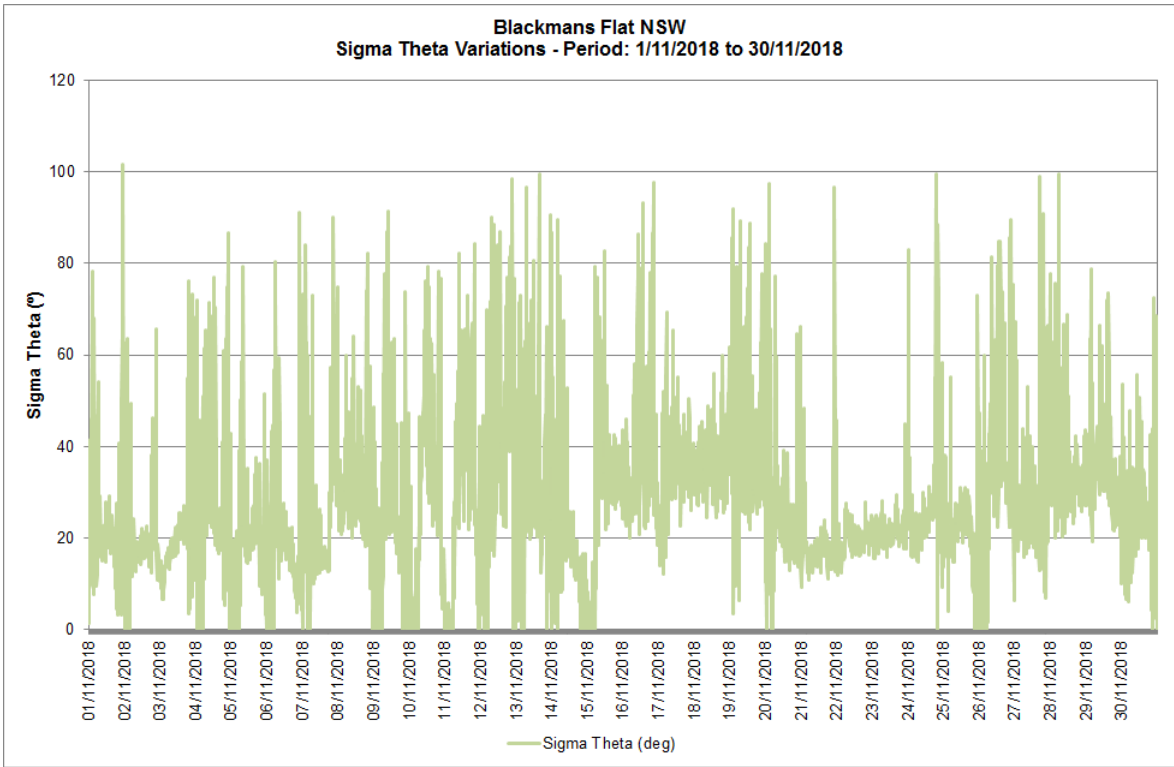


Appendix C

Meteorological Data



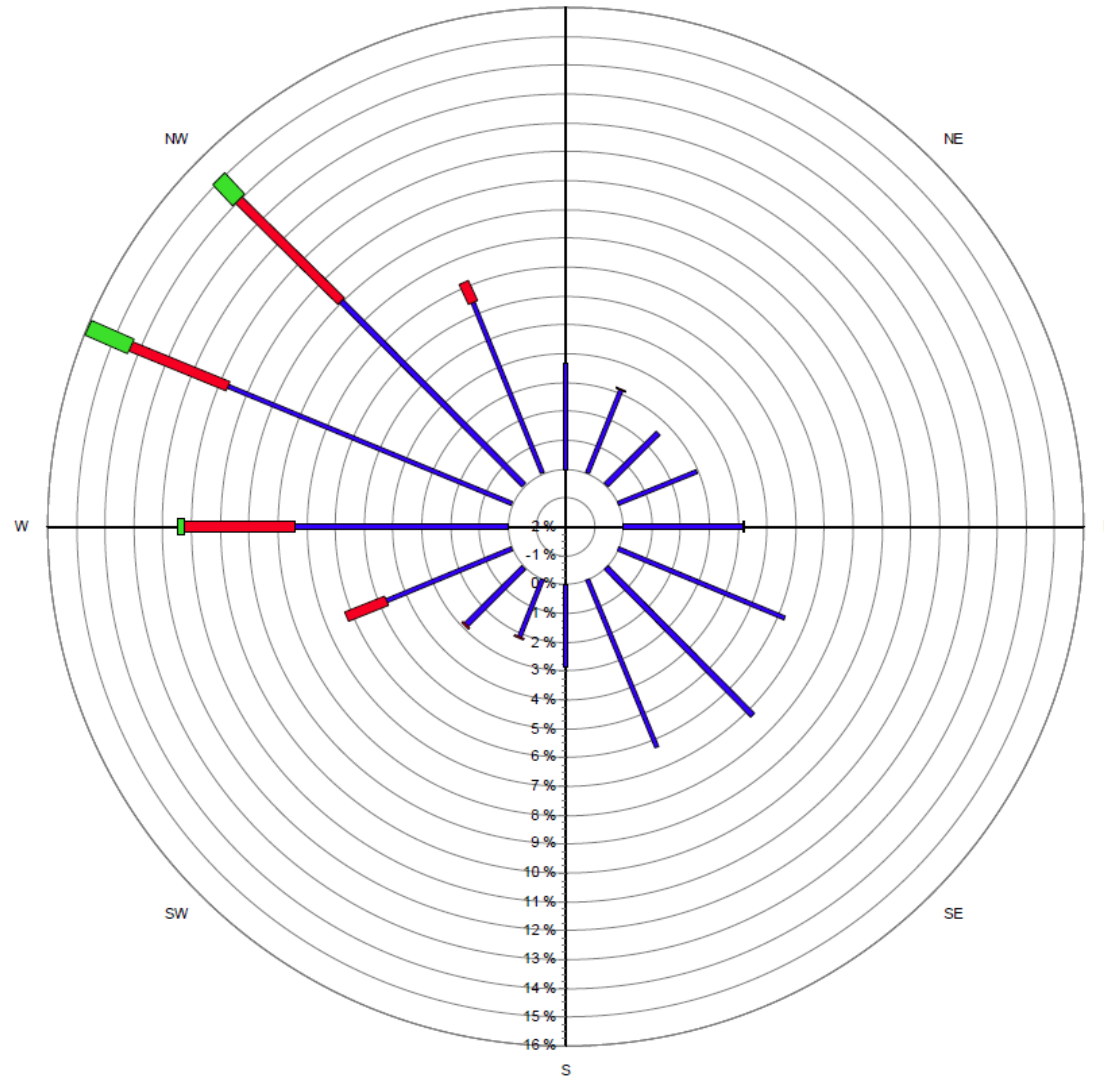
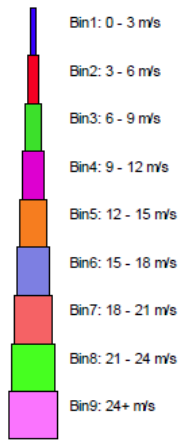




Blackmans Flat Windrose

1/11/2018 to 30/11/2018

N



Source data:
 Metford.SCM
 10 minutely data - Ave WndDir (deg)
 10 minutely data - Ave WindSpd (m/sec)