



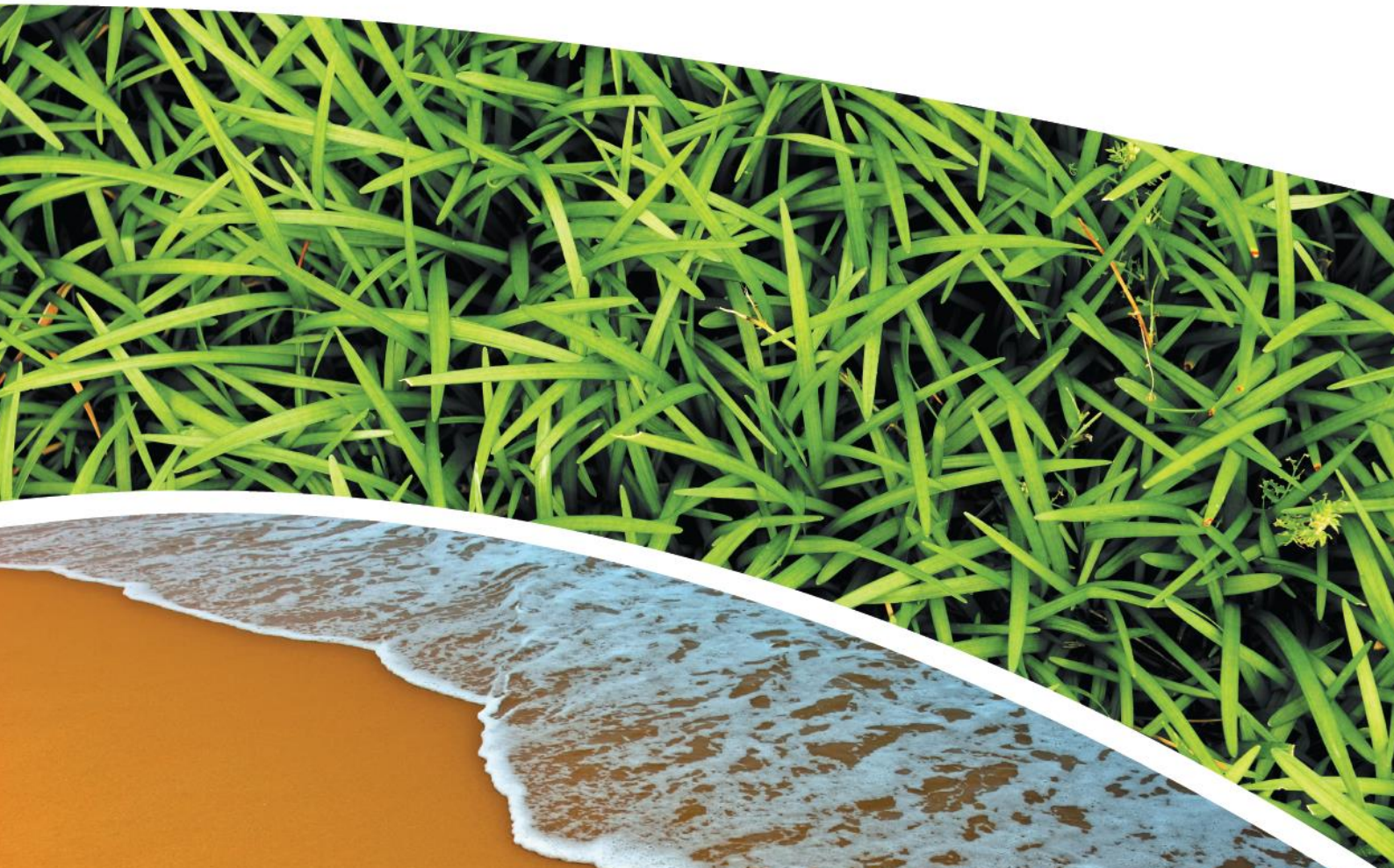
**AIR, WATER AND METEOROLOGICAL MONITORING – OCTOBER
2020**

PINE DALE MINE, BLACKMANS FLAT

Prepared for Pine Dale Mine Community Consultative Committee

Prepared by RCA Australia

RCA ref 6880-1837/1



RCA AUSTRALIA

ABN 53 063 515 711

92 Hill Street, CARRINGTON NSW 2294


Telephone: +61 2 4902 9200

Facsimile: +61 2 4902 9299

Email: administrator@rca.com.au

Internet: www.rca.com.au

This document is and shall remain the property of RCA Australia. The document may only be used for the purpose for which it was commissioned and in accordance with the Terms of Engagement. Unauthorised use of this document in any form whatsoever is prohibited.

DOCUMENT STATUS						
Rev No	Comment	Author	Reviewer	Approved for Issue (Project Manager)		
				Name	Signature	Date
/0	Final	C. Rocher	Z Laughlan	C. Rocher		17.11.2020
/1	Final	C. Rocher	Z Laughlan	C. Rocher		18.11.2020

DOCUMENT DISTRIBUTION				
Rev No	Copies	Format	Issued to	Date
/0	1	Electronic (email)	Pine Dale Mine – Graham Goodwin graham.goodwin@energyaustralia.com.au	17.11.2020
/0	1	Electronic (email)	Energy Australia- Mark Frewin mark.frewin@energyaustralia.com.au	17.11.2020
/0	1	Electronic report	RCA – job archive	17.11.2020
/1	1	Electronic (email)	Pine Dale Mine – Graham Goodwin graham.goodwin@energyaustralia.com.au	18.11.2020
/1	1	Electronic (email)	Energy Australia- Mark Frewin mark.frewin@energyaustralia.com.au	18.11.2020
/1	1	Electronic report	RCA – job archive	18.11.2020



Contents

1	INTRODUCTION	1
2	ANALYTICAL PROCEDURES.....	1
3	WATER MONITORING RESULTS.....	3
3.1	GROUNDWATER.....	3
3.2	SURFACE WATER MONITORING	4
4	AIR QUALITY RESULTS	4
4.1	HIGH VOLUME AIR SAMPLERS (HVAS)	4
4.1.1	TSP SUMMARY	4
4.1.2	PM ₁₀ SUMMARY	5
4.2	DEPOSITIONAL DUST MONITORING	5
4.2.1	ALLOWABLE DEPOSITIONAL DUST LIMITS	5
5	METEOROLOGICAL MONITORING.....	6
6	BLASTING RESULTS.....	6
7	NOISE MONITORING RESULTS.....	6
8	OPERATIONAL ACTIVITIES	6
9	SUMMARY	6
10	LIMITATIONS.....	7

APPENDIX A

MONITORING LOCATIONS

APPENDIX B

DEPOSITIONAL DUST AND HVAS GRAPHS

APPENDIX C

METEOROLOGICAL DATA

RCA ref 6880-1837/1

18 November 2020

Enhance Place Pty Ltd
PO Box 202
WALLERWANG NSW 2845

Attention: Mr Graham Goodwin

[Geotechnical Engineering](#)

[Engineering Geology](#)

[Environmental Engineering](#)

[Hydrogeology](#)

[Construction Materials Testing](#)

[Environmental Monitoring](#)

[Sound & Vibration](#)

[Occupational Hygiene](#)

**REPORT COMPILED FOR COMMUNITY CONSULTATIVE COMMITTEE
DETAILING AIR, WATER AND METEOROLOGICAL MONITORING AT PINE DALE
OCTOBER 2020**

1 INTRODUCTION

This report presents the results of air, water and meteorological monitoring undertaken at Pine Dale Mine, Blackmans Flat during the month of October 2020.

Air and water samples were collected by RCA Laboratories – Environmental staff. Meteorological data was obtained from the site weather station.

This report satisfies the requirements to monitor environmental parameters as presented in the Pine Dale Mine Environmental Protection Licence (EPL 4911).

2 ANALYTICAL PROCEDURES

The analytical procedures used by RCA Laboratories – Environmental (NATA Accreditation number 9811) are based on established internationally recognised procedures such as APHA and Australian Standards. Analytical test methods are detailed in **Table 1**.

Table 1 *Analytical Test Methods*

Analysis	Method	Units	Analysing Laboratory	NATA Accreditation Status
Determination of Suspended Particulate Matter	ENV-LAB003	µg/m ³	RCA Laboratories – Environmental	NATA Analysis
Determination of Particulate Matter – Deposited Matter	ENV-LAB004	g/m ² per month	RCA Laboratories – Environmental	NATA Analysis
pH	ENV-LAB006	pH	RCA Laboratories – Environmental	NATA Analysis
Conductivity	ENV-LAB010	µS/cm	RCA Laboratories – Environmental	NATA Analysis
Total Suspended Solids	ENV-LAB009	mg/L	RCA Laboratories – Environmental	NATA Analysis
Turbidity	ENV-LAB037	NTU	RCA Laboratories - Environmental	NATA Analysis
Oil and Grease	ENV-LAB022	mg/L	RCA Laboratories - Environmental	Non-NATA Analysis
Major Anions (Alkalinity, Cl, SO ₄)	ED037, ED041, ED045	mg/L	ALS	NATA Analysis
Major Cations (Ca, Mg, Na, K)	ED093	mg/L	ALS	NATA Analysis
Dissolved Metals	EG020F	mg/L	ALS	NATA Analysis

ALS Environmental has been used to obtain analysis of anions, cations and dissolved metals (NATA Accreditation number 825).

3 WATER MONITORING RESULTS

3.1 GROUNDWATER

A total of two (2) groundwater samples were collected from within the Pine Dale Mine site during October 2020. Water quality analysis results are shown in **Table 2**. Groundwater monitoring locations are shown in **Appendix A**.

Table 2 Groundwater Analysis Results

ANALYSIS	UNITS	P6	P7
Sample Number	-	10206880009	10206880010
Date Sampled	-	02/10/20	02/10/20
Time Sampled	-	7:12	9:02
Depth to Water from Surface	m	23.39	5.61
Water Level (AHD)	m	893.56	888.79
Temperature	°C	12.7	14.3
pH	pH	5.94	6.32
Conductivity	µS/cm	932	763
Turbidity	NTU	79	
Dissolved Oxygen	mg/L	1.6	
Total Suspended Solids	mg/L	48	
Oil and Grease	mg/L	<5	
Bicarbonate Alkalinity (CaCO ₃)	mg/L	44	
Total Alkalinity (CaCO ₃)	mg/L	44	
Sulphate (as SO ₄)	mg/L	385	
Chloride	mg/L	26	
Calcium	mg/L	77	
Magnesium	mg/L	35	
Sodium	mg/L	49	
Potassium	mg/L	10	
Cobalt (dissolved)	mg/L	0.026	
Manganese (dissolved)	mg/L	1.22	
Nickel (dissolved)	mg/L	0.064	
Zinc (dissolved)	mg/L	0.207	
Iron (dissolved)	mg/L	2.43	
Trigger Values			
pH trigger level ^a	pH	6.2 – 8.0	6.3 – 8.0
Conductivity trigger level	µS/cm	1180	852
Water Level (AHD) ^b	m	887.90	883.28
Revised Trigger Values^c			
pH trigger level ^d	pH	5.6	6.3
Water Level (AHD) ^b	M	887.9	--

☐ Indicates analysis was not required.

^a pH trigger value is exceeded if the pH is outside the nominated range.

^b Water Level trigger is exceeded if the AHD water level drops below the nominated trigger level.

^c Proposed trigger values to be used alongside the currently approved trigger values.

^d pH trigger value is exceeded if pH is below the nominated value.

Results shown in **bold** indicates exceedance of trigger value

Results shown in underline indicates exceedance of revised trigger value.

3.2 SURFACE WATER MONITORING

Quarterly surface water monitoring was not required to be undertaken during October 2020.

4 AIR QUALITY RESULTS

4.1 HIGH VOLUME AIR SAMPLERS (HVAS)

Monitoring of particulate matter less than 10 micrometres (PM₁₀) and total suspended particulates (TSP) is undertaken at Pine Dale Mine using High Volume Air Samplers (HVAS). HVAS at this facility conform to AS/NZS 3580.9.3:2015, AS/NZS 3580.9.6:2015 and AS/NZS 3580.1.1:2016. The HVAS run on a one in six-day cycle, as stipulated in the *Air Quality and Greenhouse Gas Management Plan for the Pine Dale Coal Mine*. The locations of the HVAS units are shown in **Appendix A**.

HVAS TSP results are shown in **Table 3**. PM₁₀ results are shown in **Table 4**. HVAS Monitoring locations are shown in **Appendix A**. Graphical HVAS result presentations are shown in **Appendix B**.

Table 3 Total Suspended Particulates (TSP)

Run Date	TSP (µg/m ³)	Sample Number	Filter Number	Date Filter Off	Time Filter Off	Field Tech	Hours Run
5-Oct-20	23	10206880030	9806675	10-Oct-20	8:13	Client	24.00
11-Oct-20	14	10206880032	9828386	14-Oct-20	13:24	Client	24.00
17-Oct-20	31	10206880034	9828384	22-Oct-20	11:53	Client	24.00
23-Oct-20	18	10206880036	9828382	25-Oct-20	11:50	Client	24.00
29-Oct-20	14	10206880038	9828380	01-Nov-20	17:53	Client	24.00

Table 4 Suspended Particulate Matter <10 µm (PM₁₀)

Run Date	PM ₁₀ (µg/m ³)	Sample Number	Filter Number	Date Filter Off	Time Filter Off	Field Tech	Hours Run
5-Oct-20	12	10206880031	9806676	10-Oct-20	8:15	Client	24.00
11-Oct-20	5	10206880033	9828387	14-Oct-20	13:26	Client	24.00
17-Oct-20	12	10206880035	9828385	22-Oct-20	11:55	Client	24.00
23-Oct-20	11	10206880037	9828383	25-Oct-20	11:52	Client	24.00
29-Oct-20	6	10206880039	9828381	01-Nov-20	17:55	Client	24.00

4.1.1 TSP SUMMARY

The NSW EPA Annual Mean TSP allowable limit is 90µg/m³. All TSP HVAS results recorded during this monitoring period are in compliance with consent conditions, as the *current rolling annual mean* (November 2019 to October 2020) for TSP is 48.4µg/m³, which is below the allowable limit of 90µg/m³.

The twelve-monthly graph is provided in **Appendix B**.

4.1.2 *PM₁₀ SUMMARY*

The NSW EPA twenty-four (24) hour maximum PM_{10} allowable limit is $50\mu\text{g}/\text{m}^3$; there were no PM_{10} concentrations in excess of this limit. The HVAS PM_{10} annual average result is above the NSW EPA long-term assessment criterion of $25\mu\text{g}/\text{m}^3$ with the result currently at $28.2\mu\text{g}/\text{m}^3$ (refer **Appendix B**): it is considered this has been influenced by bushfire activity. During November 2019 – January 2020, the air quality in the Lithgow area was impacted by bushfires, predominantly the Gaspers' Mountain fire which occurred within Wollemi National Park, moving through to Ben Bullen State forest and Pine Dale Mine during January 2020.

The Pine Dale Mine Project Approval 10_0041 stipulates the annual average PM_{10} criterion to be $30\mu\text{g}/\text{m}^3$, as such the current rolling annual average is compliant with the Project Approval.

4.2 DEPOSITIONAL DUST MONITORING

The depositional dust monitoring exposure period for October 2020 was 3 September – 3 October 2020. Depositional dust gauges at this facility conform to AS/NZS 3580.10.1:2016 and AS/NZS 3580.1.1:2016. The October exposure period was 28 days which is within the 30 ± 2 days dust exposure period stipulated in AS/NZS 3580.10.1:2016. Depositional dust monitoring results are shown in **Table 5**. Depositional dust monitoring locations are shown in **Appendix A**.

Table 5 *Depositional Dust Monitoring*

Deposit Gauge	Number of Days	Notes	Insoluble Solids	Ash	Combustible Matter
D1	28	IT	1.1	0.1	1.0
D3	28	N	0.7	0.4	0.3
D4	28	I	0.4	0.2	0.2
D5	28	I	0.8	0.2	0.6
D6	28	I	1.5	1.2	0.3

All units are $\text{g}/\text{m}^2/\text{month}$

I – Insects (eg, Ants, Spiders)

T – Tree litter (leaves, gumnuts)

N – No foreign material

4.2.1 ALLOWABLE DEPOSITIONAL DUST LIMITS

The EPA long term (annual average) deposited dust limit is $4\text{g}/\text{m}^2$ per month. The rolling annual average depositional dust results for all sites within the period (November 2019 – October 2020) are in compliance with consent conditions. The annual average for dust gauges D1, D3, D4, D5 and D6 are all less than or equal to $1.9\text{g}/\text{m}^2$ per month. Annual averages are shown in the depositional dust gauge graphs provided in **Appendix B**.

5 METEOROLOGICAL MONITORING

Pine Dale Mine records meteorological data continuously via an onsite weather station. Details of the weather data recorded during the period 1 to 31 October 2020 are shown in **Appendix C**.

Data availability during this period was 100%.

6 BLASTING RESULTS

No blasting was undertaken during this month as mining operations have ceased since the end of March 2014.

7 NOISE MONITORING RESULTS

Quarterly noise monitoring was not required to be undertaken at Pine Dale during October 2020.

8 OPERATIONAL ACTIVITIES

All of the approved minable reserves at the Pine Dale Mine have now been exhausted. Operational mining and the last coal sales ceased as of the end of March 2014.

Pine Dale Mine has been placed in care and maintenance since April 2014. All former operators have been made redundant; however, some statutory positions still remain.

9 SUMMARY

During the month of October 2020 environmental monitoring results were found to be generally in compliance with stipulated criteria with the exception of:

- The pH at groundwater bore P6 was below the lower site-specific trigger value.

The revised trigger values do not have a limit for electrical conductivity, as such P6 would be compliant. The pH at P6 is considered compliant when compared to the revised pH trigger value. The revised pH trigger value at P7 remains the same as the current trigger value.

The rolling annual average from the TSP High Volume Air Sampler is well below the EPA Annual Mean TSP criterion of $90\mu\text{g}/\text{m}^3$. The rolling annual average from the PM_{10} High Volume Air Sampler ($28.8\mu\text{g}/\text{m}^3$) is above the EPA Annual Mean PM_{10} criterion of $25\mu\text{g}/\text{m}^3$; however, this annual average concentration is considered to be influenced by bushfire activity during November 2019 – January 2020. There are no depositional dust gauge results which are greater than the EPA Long Term (annual average) criteria of $4\text{g}/\text{m}^2$.month based upon a rolling average of the past 12 months.

Meteorological monitoring was undertaken for the entire month of October with 100% data capture.

Pine Dale Mine ceased operation in March 2014 and therefore no blasting occurred at the site.

10 LIMITATIONS

This report has been prepared for Enhance Place Pty Ltd in accordance with an agreement with RCA Australia (RCA). The services performed by RCA have been conducted in a manner consistent with that generally exercised by members of its profession and consulting practice.

This report has been prepared for the sole use of Enhance Place. The report may not contain sufficient information for purposes of other uses or for parties other than Enhance Place. This report shall only be presented in full and may not be used to support objectives other than those stated in the report without written permission from RCA Australia.

The information in this report is considered accurate at the date of issue with regard to the current conditions of the site. Conditions can vary across any site that cannot be explicitly defined by investigation.

Environmental conditions including contaminant concentrations can change in a limited period of time. This should be considered if the report is used following a significant period of time after the date of issue.

Yours faithfully

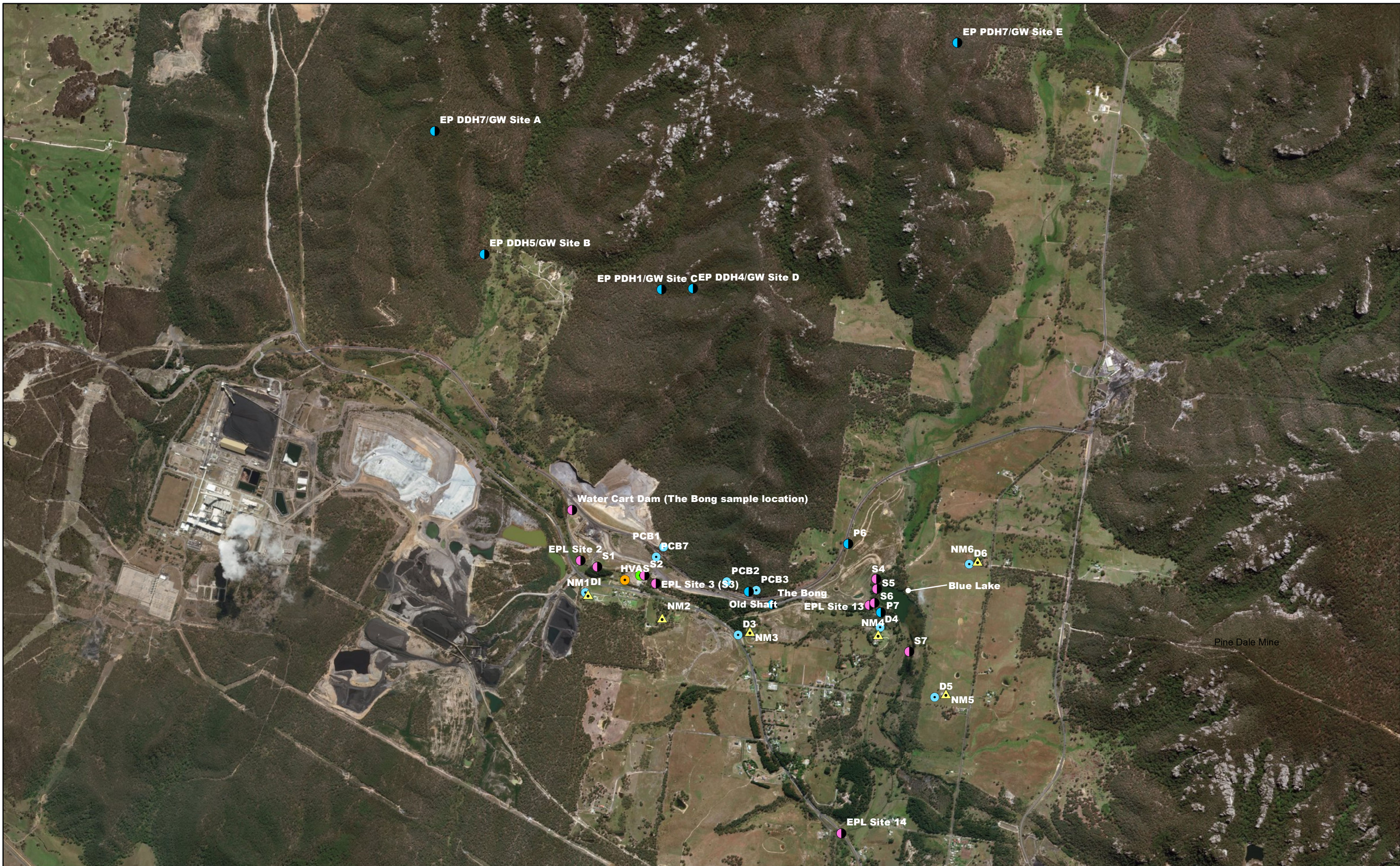
RCA AUSTRALIA



Carmen Rocher
Environmental Engineer

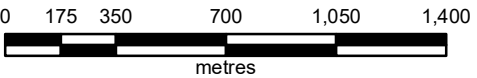
Appendix A

Monitoring Locations



LEGEND

- ▲ Noise Monitoring Location
- Depositional Dust Monitoring Location
- Groundwater Monitoring Location
- High Volume Air Sampling Location
- Meteorological Monitoring Location
- Surface Water Monitoring Location

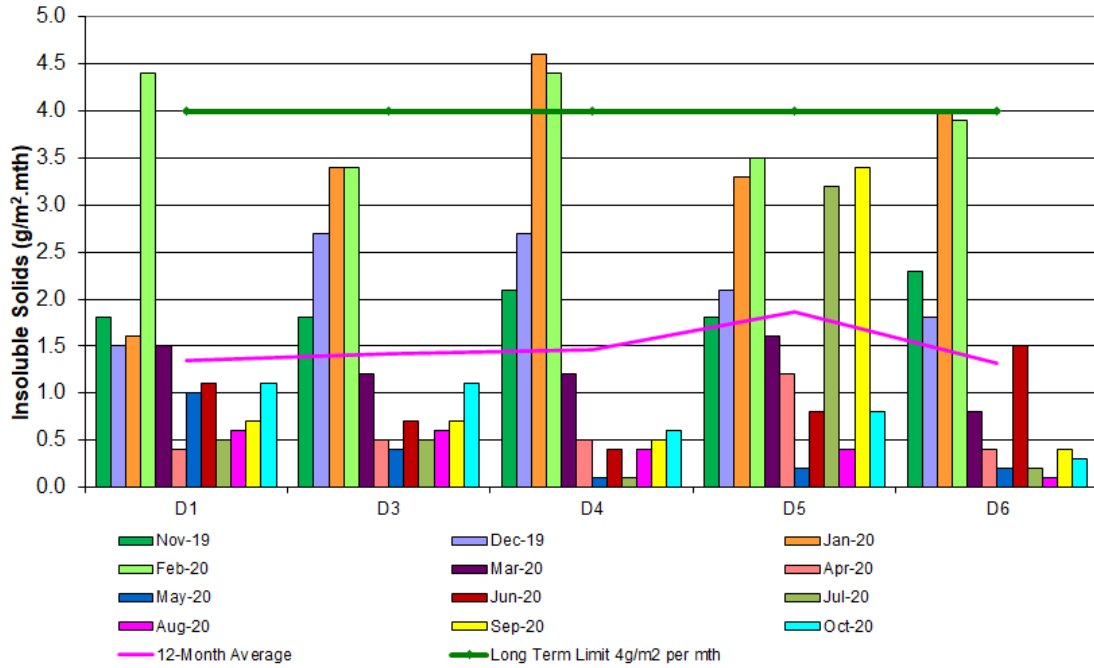


**PINE DALE MINE
ENVIRONMENTAL MONITORING
LOCATION PLAN**

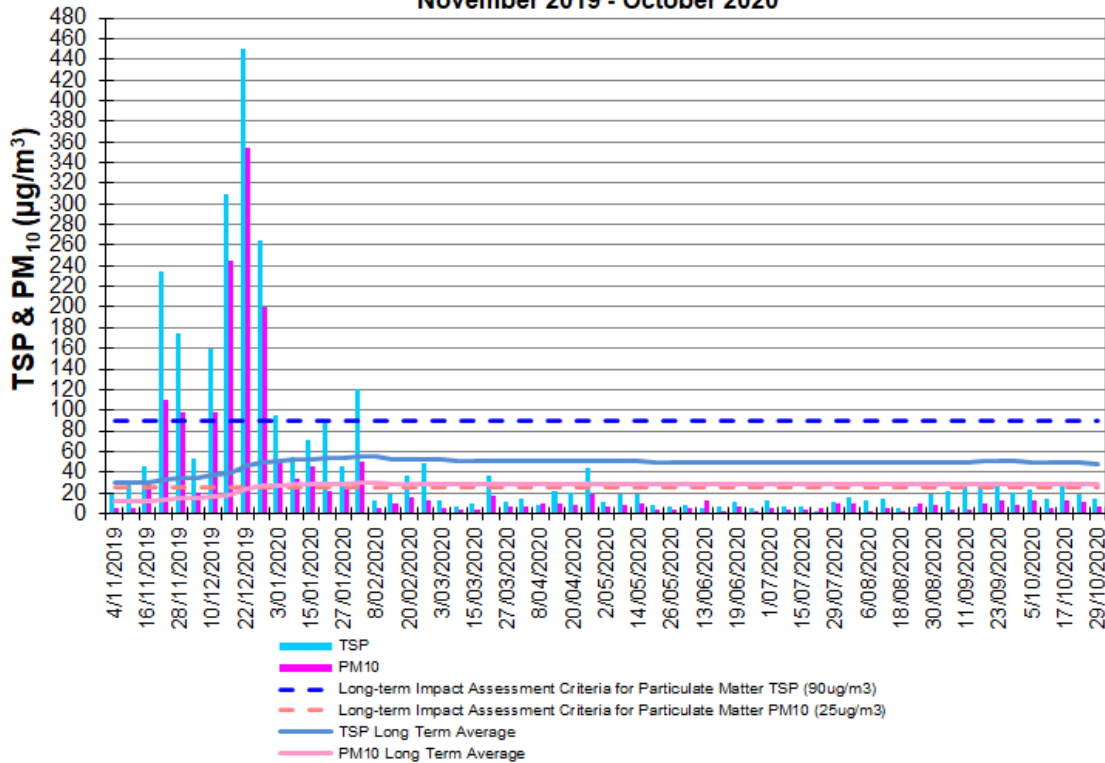
Appendix B

Depositional Dust and HVAS Graphs

**Pine Dale Mine
Deposited Matter - Insoluble Solids 12 Months Comparative Results
November 2019 to October 2020**

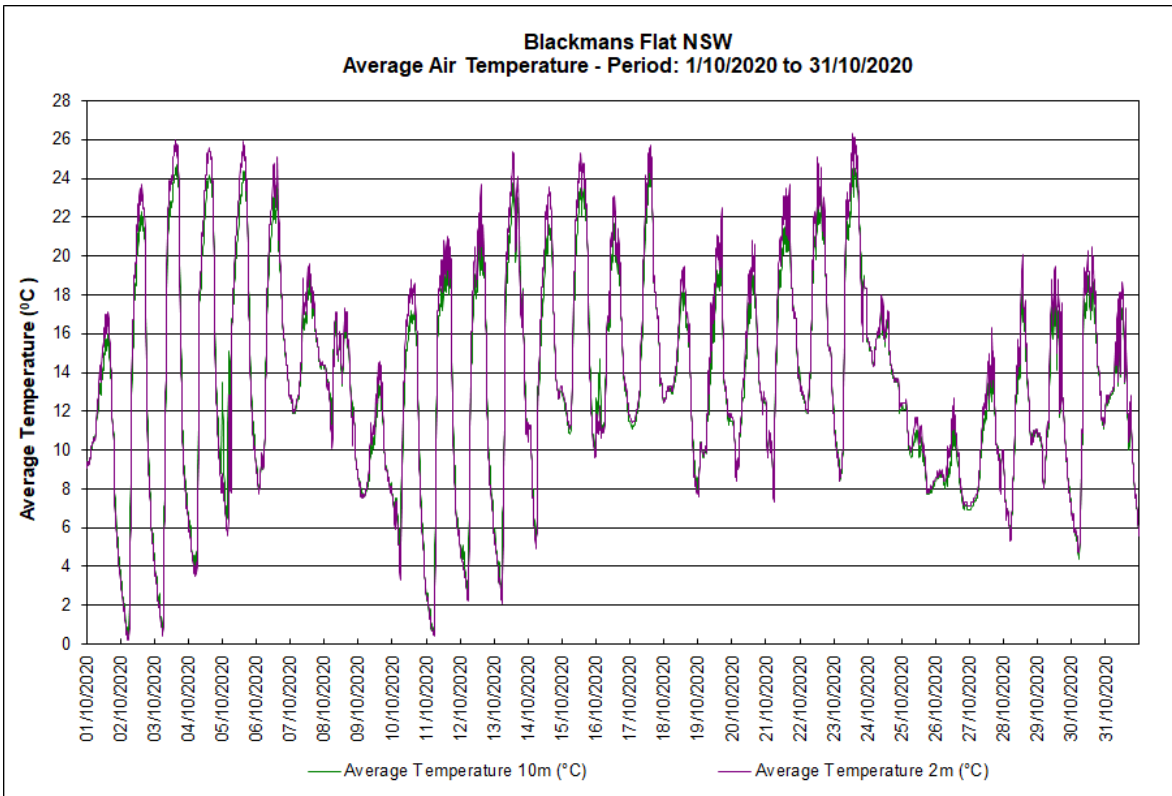
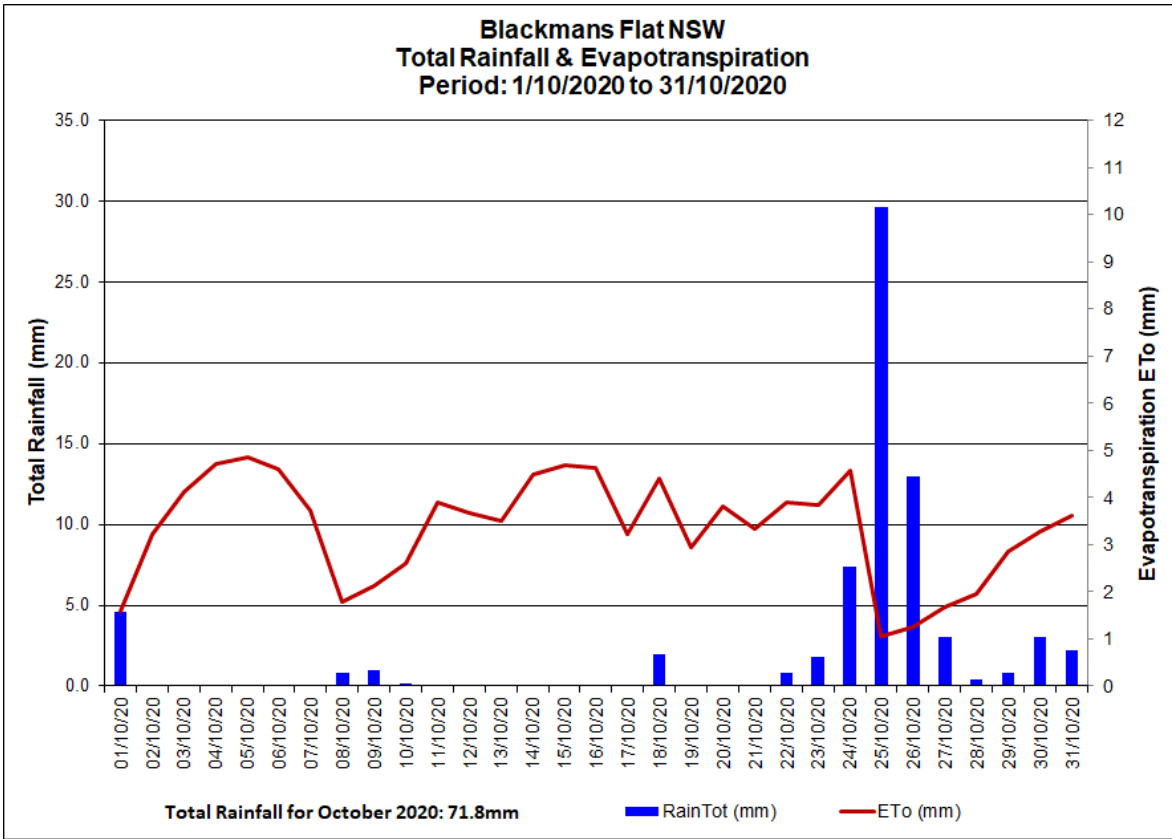


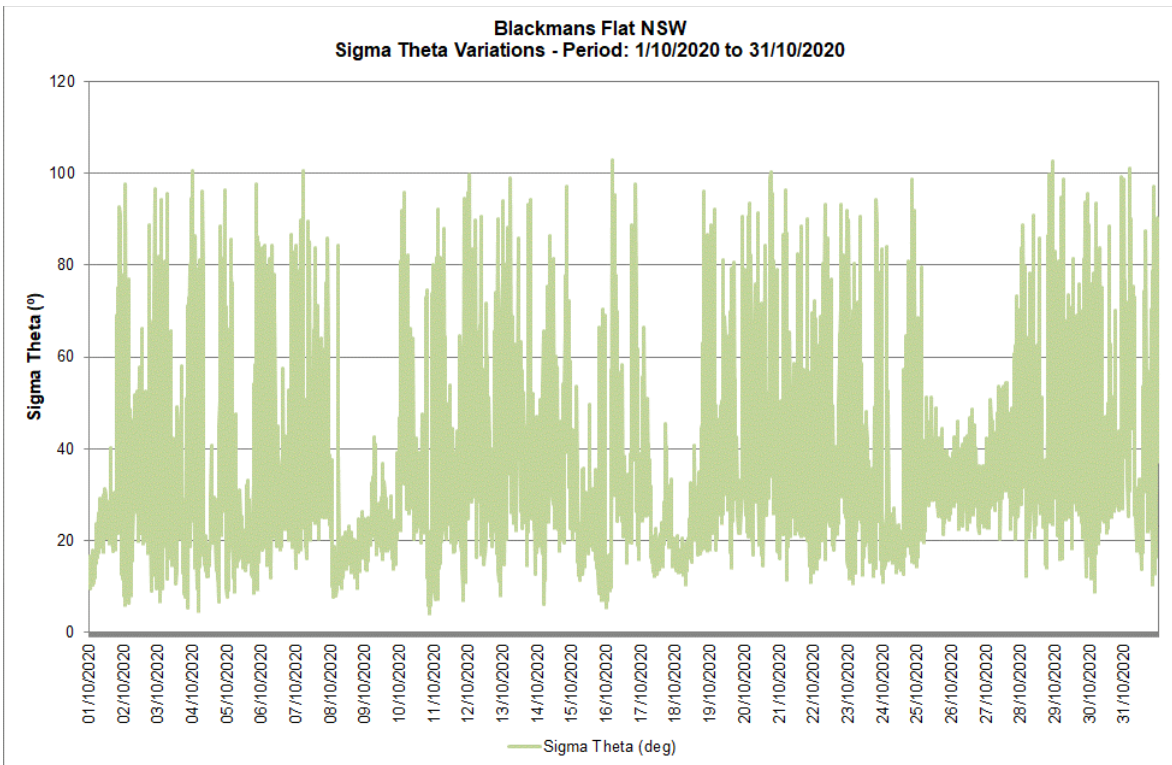
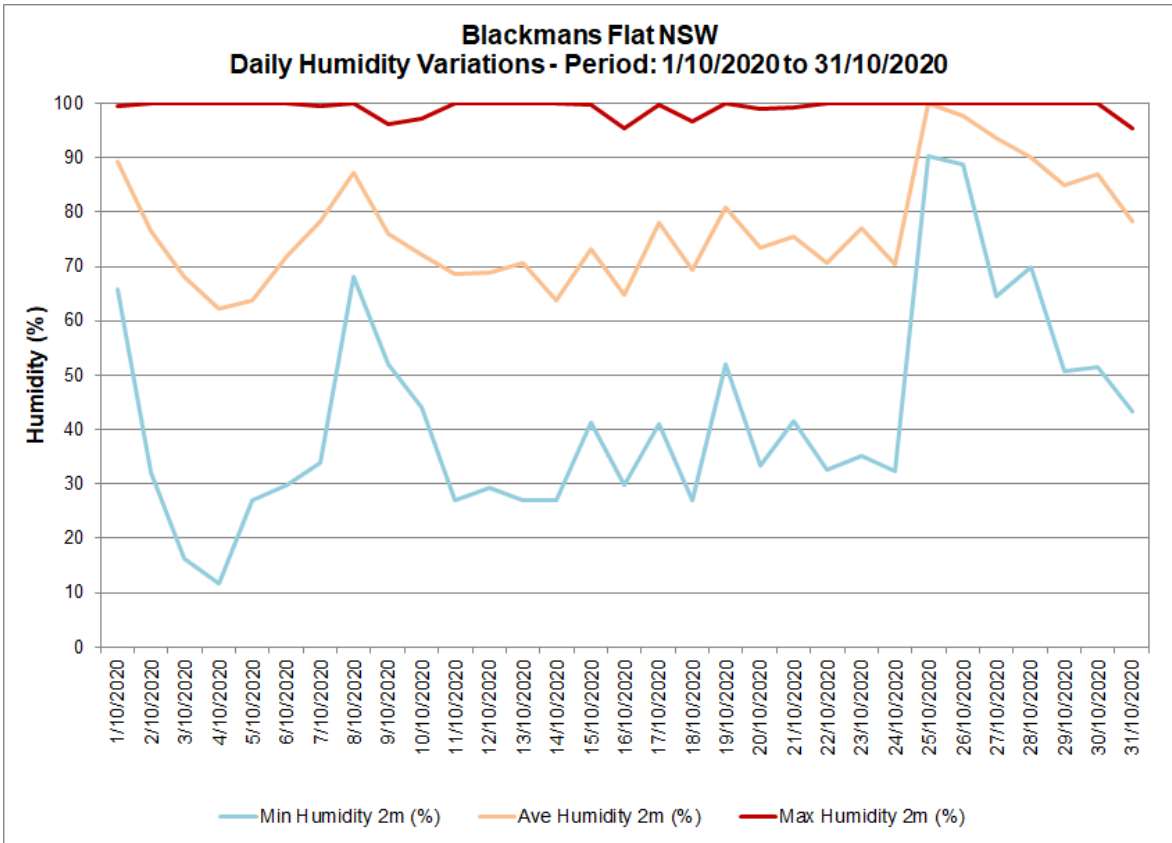
**Pine Dale Mine
TSP & PM₁₀ HVAS 12-Month Comparative Results
November 2019 - October 2020**



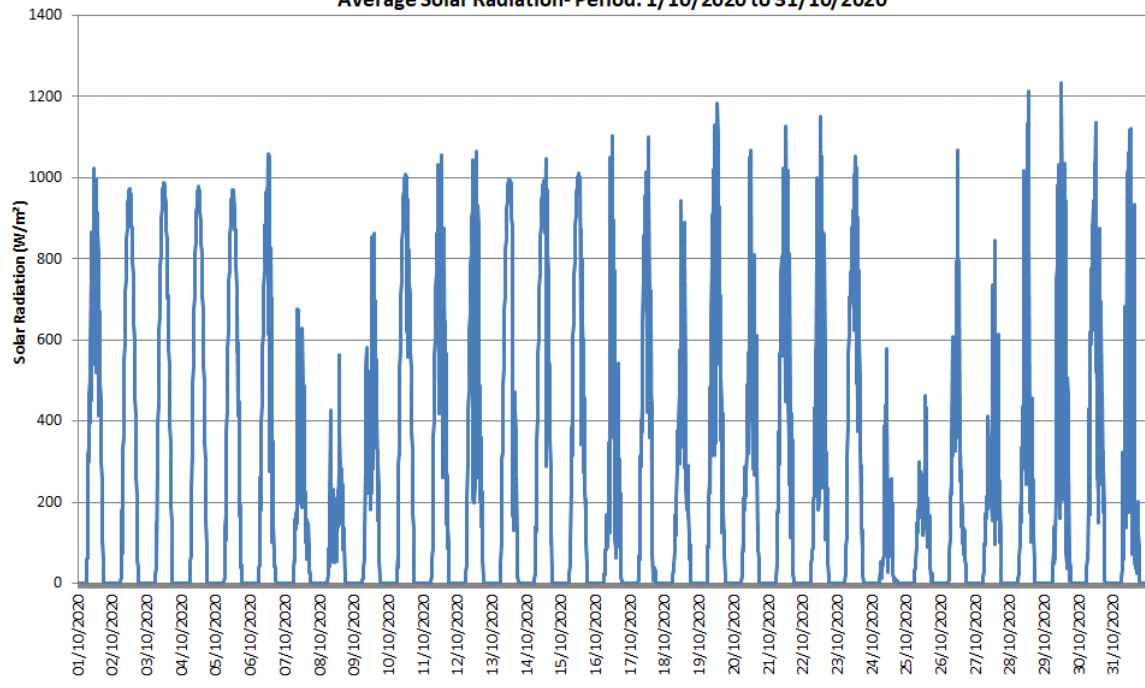
Appendix C

Meteorological Data



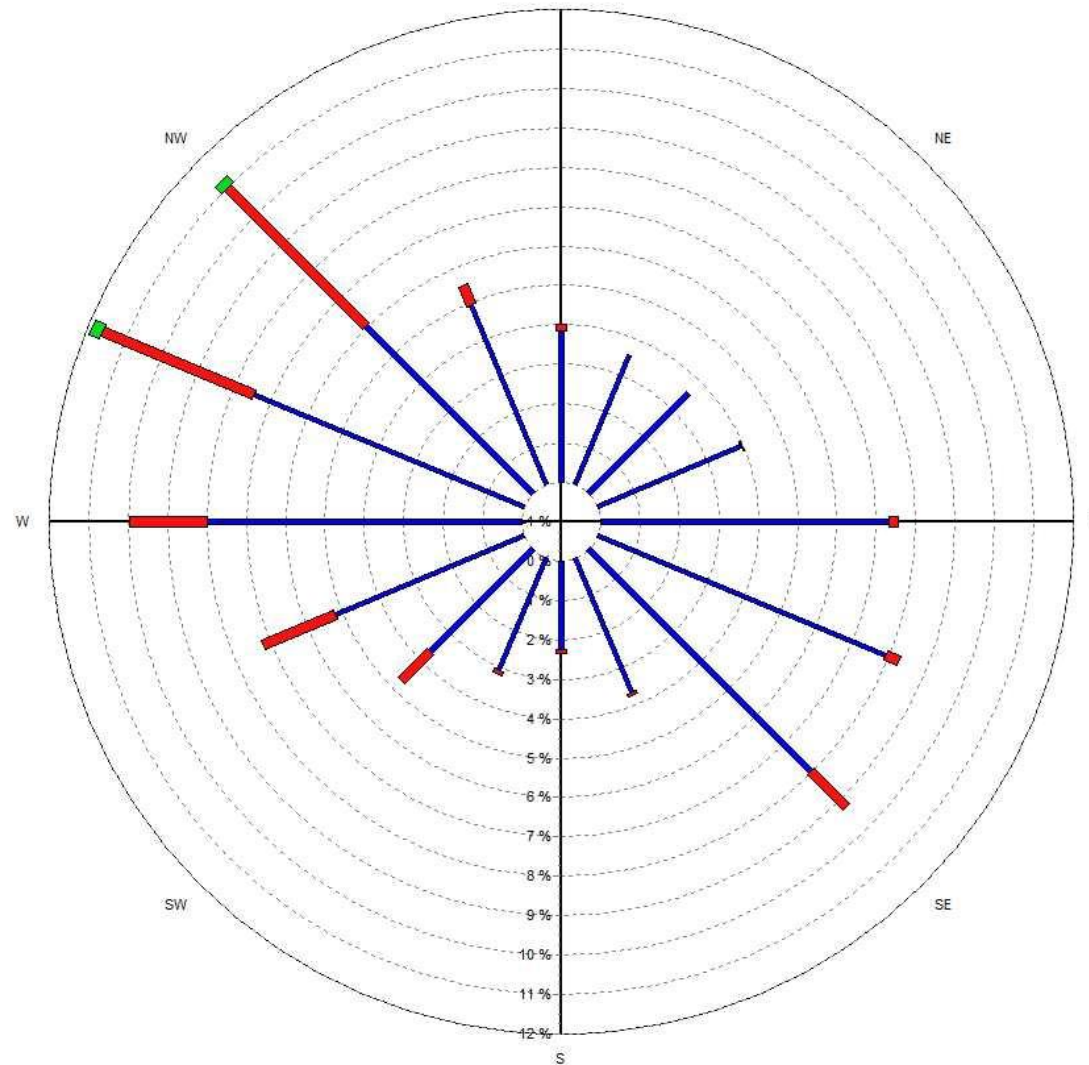
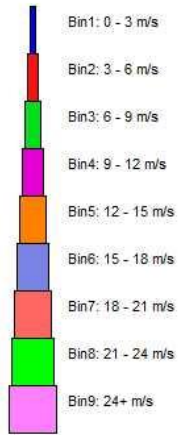


Blackmans Flat NSW
Average Solar Radiation- Period: 1/10/2020 to 31/10/2020



Blackmans Flat Windrose

1/10/2020 to 31/10/2020
N



Source data:
PineDale.SCM
10 minutely data - Ave WndDir (deg)
10 minutely data - Ave WndSpd (m/sec)