

Mt Piper Battery Energy Storage System

Fire safety

Acknowledgement of Country and First Nations People

EnergyAustralia recognises that the proposed site for the Mt Piper Battery Energy Storage System is on the traditional Country of Wiradjuri peoples and respects and acknowledges their continued connection to Country and culture.

EnergyAustralia is progressing the development of a battery energy storage system (BESS) on land it owns next to the existing Mt Piper power station.

Batteries are a proven energy storage technology that absorb and release energy on demand. The Mt Piper BESS could dispatch up to 500 megawatts (MW) of power to the electricity network for up to 4 hours, adding flexibility and reliability to the grid when energy demand is high.

The project received planning approval from the NSW Department of Planning, Housing, and Infrastructure (DPHI) in November 2024 following public exhibition of the project's Environmental Impact Statement (EIS) in mid-2024.

Managing fire risk for BESS projects

EnergyAustralia prioritises effective management of health, safety and environmental risks at its assets. All battery projects need to comply with relevant guidelines and standards to reduce the risk of fire and enable their safe operation. The Mt Piper BESS will follow the International Electrotechnical Commission (IEC) standards for lithium-ion batteries, which set out how to construct, maintain and dispose of batteries safely. The BESS will also be third party certified against specific fire safety standards. With these appropriate safety assessment processes in place, the risk of fire within the BESS system can be managed.

A Fire Safety Study is being developed in accordance with the requirements of Hazardous Industry Planning Advisory Paper (HIPAP) No.2 and to meet the operational requirements of Fire and Rescue NSW.

Appropriate safety measures include:

- Installing and maintaining cooling and ventilation systems to keep battery within normal temperature limits
- Separating and insulating battery modules to lower the risk of fire spreading
- Designing and installing compliant fire detection and suppression systems.

These measures will help to lower the risk of fire occurring on site.

Managing bushfire risk

Bushfires pose a risk for sites where bushfire prone vegetation is present.

Accordingly, a bushfire assessment was undertaken for the planning approval process. The assessment followed the relevant guidelines, including *Planning for Bush Fire Protection: A guide for councils, planners, fire authorities and developers* (New South Wales Rural Fire Service, 2019) (the PBP).

To address the requirements of the PBP, the project includes the following fire and risk management measures:

- Providing a safe access and exit route for firefighting vehicles to access the site
- Providing an evacuation route and safety point
- Establishing and maintaining a defendable space around the site, to separate infrastructure from surrounding bushland and provide access around the site
- Installation of suitable water supply and hydrants around the project site

Bushfire Emergency Management and Evacuation Plan

As the project progresses, a Bushfire Emergency Management and Evacuation Plan (BFEMEP) is being developed.

This plan will include:

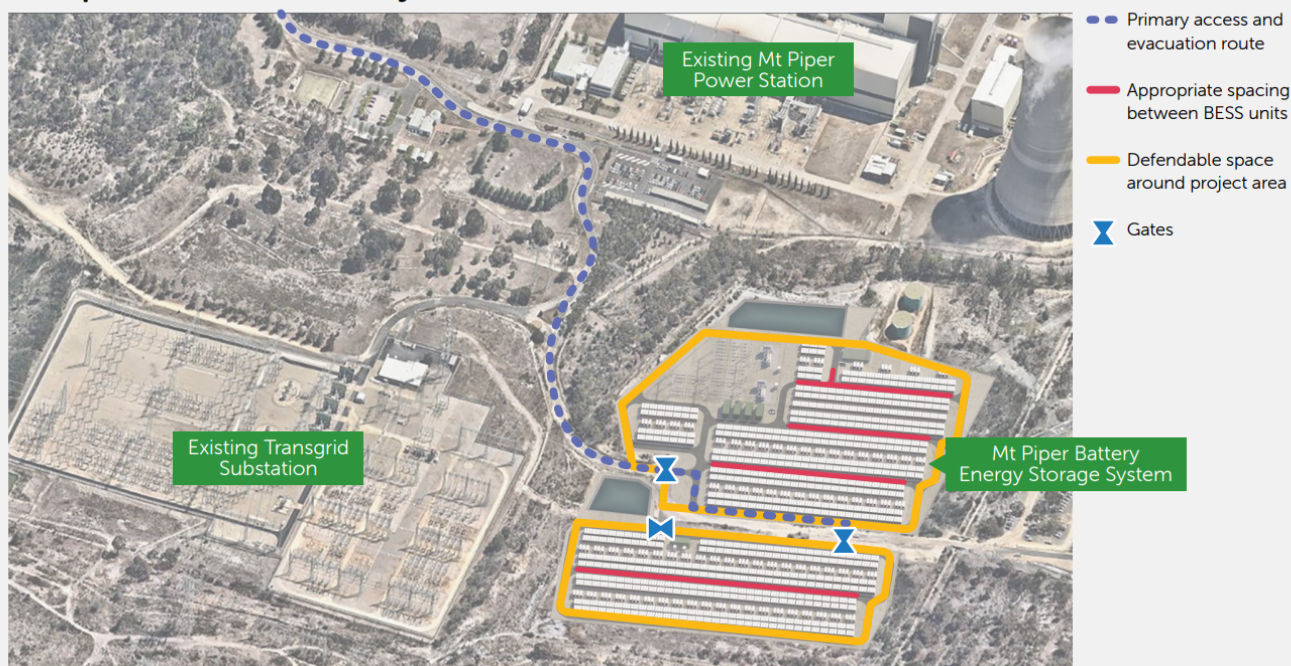
- Risk mitigation protocols during construction, including on days with high fire danger ratings
- Training for staff about bushfire risks and mitigation plans
- Measures to prevent bushfire ignition
- Plans to ensure any bushfires are reported as soon as possible

Next steps and find out more

We will continue working with Fire and Rescue NSW and local Rural Fire Service brigades to understand and manage any bushfire risk through construction and operation.

We will also continue to provide the community and local stakeholders with opportunities to provide feedback and input into the project. This will inform further planning, design, and construction of the Mt Piper BESS

Mt Piper BESS Indicative Layout (500MW)



For more information on the Mt. Piper Battery Project, please contact us:

Email: community@EnergyAustralia.com.au

Phone: 1800 574 947

Postal Address: EnergyAustralia NSW Pty Ltd, 350 Boulder Road, Portland NSW 2847.

Website: energyaustralia.com.au/about-us/what-we-do/new-energy-projects/mt-piper-battery-energy-storage-system